

AIN'T THE FATS WALLER MUSICAL SHOW MISBEHAVIN'



atc

ARIZONA
THEATRE
COMPANY

2025/2026



////// **BOARD OFFICERS** ////

Pat Engels, Chair
Debra Larson, Vice Chair
Kay Oliver, Secretary
Adam Michael, Treasurer

////// **BOARD OF TRUSTEES** ////

Beverly Arrington
Matt August, Kasser Family Artistic Director
Brian Boylan
Michael Bradford
Stephen Heitz
Cheryl Boone Isaacs
Arnold H. Murphy

Michael O'Connor
Ana Rose O'Halloran, Executive Director
Mary Beth Radke
Joan Sherwood
Erica Stutman
Tina Waddington
Andy Watson

////// **EMERITUS TRUSTEES** ////

Char Augenstein, Chair Emeritus
Paul Baker
Katie Dusenberry
Lynne Wood Dusenberry
Darryl Dobras

Shirley Estes
I. Michael Kasser
Dr. John Schaefer
F. William Sheppard

Jessica L. Andrews, Managing Director Emeritus **David Ira Goldstein**, Artistic Director Emeritus

MATT AUGUST
KASSER FAMILY ARTISTIC DIRECTOR



ANA ROSE O'HALLORAN
EXECUTIVE DIRECTOR

FEBRUARY 21 - MARCH 8, 2026

ARIZONA THEATRE COMPANY

AIN'T MISBEHAVIN'
THE FATS WALLER MUSICAL SHOW

CREATED AND ORIGINALLY DIRECTED BY **RICHARD MALTBY JR.**

CONCEIVED BY **RICHARD MALTBY JR. AND MURRAY HORWITZ**

ORIGINAL CHOREOGRAPHY AND MUSICAL STAGING BY **ARTHUR FARIA**

MUSICAL ADAPTATIONS, ORCHESTRATIONS & ARRANGEMENTS BY **LUTHER HENDERSON**

VOCAL & MUSICAL CONCEPTS BY
JEFFREY GUTCHEON

MUSICAL ARRANGEMENTS BY
JEFFREY GUTCHEON & WILLIAM ELLIOTT

ORIGINALLY PRODUCED BY THE MANHATTAN THEATRE CLUB
ORIGINALLY PRODUCED ON BROADWAY BY EMANUEL AZENBERG,
DASHA EPSTEIN, THE SHUBERT ORGANIZATION, JANE GAYNOR & RON DANTE

SCENIC DESIGNER
EDWARD E. HAYNES JR.

COSTUME DESIGNER
JAHISE LÉBOUEF

LIGHTING DESIGNER
RUI RITA

SOUND DESIGNER
DANIEL PERELSTEIN JAQUETTE

STAGE MANAGER
DARLENE MIYAKAWA

ASSISTANT STAGE MANAGER
SUZANNE APICELLA

CASTING
THE TRC COMPANY
MERRI SUGARMAN, CSA

MUSIC DIRECTOR
ABDUL HAMID ROYAL

DIRECTOR AND CHOREOGRAPHER
DELL HOWLETT

Ain't Misbehavin' is presented through special arrangement with Music Theatre International (MTI).
All authorized performance materials are also supplied by MTI. www.mtishows.com

PRODUCTION
SPONSOR **SRP**

SEASON SPONSOR **I. MICHAEL AND BETH KASSER**

CORPORATE
SEASON SPONSOR **LAVIDGE**

COMMUNITY
NIGHT SPONSOR **JEFF GULDNER AND SYDNEY REED**

COMMUNITY NIGHT CONTRIBUTOR: **AARP ARIZONA**



CAST (IN ORDER OF APPEARANCE)

TAYLOR COLLETON **ROLE ORIGINATED BY ARMELIA MCQUEEN**
KEIRSTEN HODGENS **ROLE ORIGINATED BY NELL CARTER**
WILKIE FERGUSON III **ROLE ORIGINATED BY ANDRE DESHIELDS**
ANTHONY MURPHY **ROLE ORIGINATED BY KEN PAGE**
AERIE WILLIAMS **ROLE ORIGINATED BY CHARLAINE WOODARD**

The Actors and Stage Managers employed in this production are members of Actors' Equity Association, the Union of Professional Actors and Stage Managers in the United States.

BAND

PIANO/CONDUCTOR **ABDUL HAMID ROYAL**
DRUMS **LAND RICHARDS**
BASS **JERVONNY COLLIER**
REEDS **SAMUEL LUPE**
TRUMPET **KURT FINCHUM**
TROMBONE **KRISTAL RAMSEY**

ADDITIONAL PERSONNEL

CASTING ASSOCIATE
SPENCER GUALDONI, CSA

DANCE CAPTAIN
TAYLOR COLLETON

SETTING **TIME**

A DREAM OF FATS WALLER

HARLEM AT MIDNIGHT

THERE WILL BE ONE 15-MINUTE INTERMISSION

On this original Arizona Theatre Company production, the ATC Production Staff is responsible for scenic construction, costume construction, lighting, sound, props, furniture, wigs, scene painting, and special effects.

ANY VIDEO AND/OR AUDIO RECORDING OF THIS PRODUCTION IS STRICTLY PROHIBITED.

Cell phones and other devices that make a noise or emit light can greatly disturb your fellow audience members and the performers. PLEASE TURN THEM OFF before the performance.



This Theatre operates under an agreement between the League of Resident Theatres and Actors' Equity Association, the Union of Professional Actors and Stage Managers in the United States.



The Director and/or Choreographer is a member of the Society of Stage Directors and Choreographers, Inc., an independent national labor union.



Scenic, Costume, Lighting, and Sound in LORT Theatres are represented by United Scenic Artists Local USA-829, IATSE.

ACT ONE

AIN'T MISBEHAVIN' (1929)*

Music by Thomas Waller and Harry Brooks, Lyric by Andy Razaf

LOOKIN' GOOD BUT FEELIN' BAD (1929)

Lyric by Lester A. Santly

'T AIN'T NOBODY'S BIZ-NESS IF I DO (1922)*

(The first song recorded by Fats Waller)

Music and Lyric by Porter Grainger and Everett Robbins, Additional

Lyric by Richard Maltby Jr. and Murray Horwitz

HONEYSUCKLE ROSE (1939)

Lyric by Andy Razaf

SQUEEZE ME (1925)

Lyric by Clarence Williams

HANDFUL OF KEYS (1933)

Lyric by Richard Maltby Jr. and Murray Horwitz

(based on an idea by Marty Grosz)

I'VE GOT A FEELING I'M FALLING (1929)*

Music by Thomas Waller and Harry Link, Lyric by Billy Rose

HOW YA BABY (1938)

Lyric by J.C. Johnson

THE JITTERBUG WALTZ (1942)

Lyric by Richard Maltby Jr.

THE LADIES WHO SING WITH THE BAND

Lyric by George Marion Jr.

YACHT CLUB SWING (1938)*

Music by Thomas Waller and Herman Autry, Lyric by J.C. Johnson

WHEN THE NYLONS BLOOM AGAIN (1943)

Lyric by George Marion Jr.

CASH FOR YOUR TRASH (1942)

Lyric by Ed Kirkeby

OFF-TIME (1929)*

Music by Thomas Waller and Harry Brooks, Lyric by Andy Razaf

THE JOINT IS JUMPIN' (1938)

Lyric by Andy Razaf and J.C. Johnson

ACT TWO

SPREADIN' RHYTHM AROUND (1935)*

Music by Jimmy McHugh, Lyric by Ted Koehler,

Additional Lyric by Richard Maltby Jr.

LOUNGING AT THE WALDORF

Lyric by Richard Maltby Jr.

THE VIPER'S DRAG (1943)

"The Reefer Song" (Traditional)

MEAN TO ME (1929)*

Music and Lyric by Roy Turk and Fred E. Ahlert

YOUR FEET'S TOO BIG (1936)*

Music and Lyric by Ada Benson and Fred Fisher

THAT AIN'T RIGHT (1943)*

Music and Lyric by Nat "King" Cole, Additional Lyric by Richard Maltby Jr.

and Murray Horwitz

KEEPIN' OUT OF MISCHIEF NOW (1932)

Lyric by Andy Razaf

FIND OUT WHAT THEY LIKE (1929)

Lyric by Andy Razaf

FAT AND GREASY (1939)*

Music and Lyric by Porter Grainger and Charlie Johnson

BLACK AND BLUE (1929)*

Music by Thomas Waller and Harry Brooks, Lyric by Andy Razaf

FINALE

I'M GONNA SIT RIGHT DOWN AND WRITE MYSELF A LETTER (1933)*

Music by Fred E. Ahlert, Lyric by Joe Young

TWO SLEEPY PEOPLE (1938)*

Music by Hoagy Carmichael, Lyric by Frank Loesser

I'VE GOT MY FINGERS CROSSED (C. 1935)*

Music by Jimmy McHugh, Lyric by Ted Koehler

I CAN'T GIVE YOU ANYTHING BUT LOVE (1928)*

Music by Jimmy McHugh, Lyric by Dorothy Fields

IT'S A SIN TO TELL A LIE (1933)*

Music and Lyric by Billy Mayhew

HONEYSUCKLE ROSE (reprise)

Music by Thomas "Fats" Waller alone, except where (*) indicated.

Songs not written by Fats Waller were recorded by him.



LETTER FROM KASSER FAMILY ARTISTIC DIRECTOR MATT AUGUST AND EXECUTIVE DIRECTOR ANA ROSE O'HALLORAN



Welcome to *Ain't Misbehavin'* – a joyful celebration of Fats Waller and the Harlem Renaissance. The brilliance that emerged from this era didn't simply shape jazz; it reshaped the trajectory of American music itself. Quite simply, the American musical would not exist as we know it without the artists and innovators of the Harlem Renaissance.

Continuing that legacy, we are excited to welcome the immensely talented Dell Howlett, a choreographer, director, and storyteller whose creativity moves effortlessly across disciplines. His approach invites us to experience this American classic through a fresh lens – one that honors the foundation built by Fats Waller while asking how the work resonates and entertains audiences of today.

In developing this production, Dell explores how Fats Waller himself looked both backward and forward – drawing inspiration from musical traditions that came before him while reaching toward a future

he could only imagine. Dell and this remarkable creative team have built a world that captures the vitality of 1930s Harlem while also speaking clearly to our present moment.

For us, as co-leaders of Arizona Theatre Company, this production reflects the caliber of theatre we are committed to bringing to you. ATC is uniquely positioned to tell stories of this scale and significance – stories that move us, delight us, challenge us, and connect us across generations. As we look ahead, our vision for ATC is centered on you, our community, bringing you unparalleled experiences that you can take great pride in. We want our theatre to be a home for extraordinary artists, a platform for vivid storytelling, and a gathering place where Arizonans feel welcomed and inspired.

We invite you to experience this production of *Ain't Misbehavin'* not only as a tribute, but as a living, breathing reminder of how art connects us across time. This show honors the past, reflects the present, and looks toward the future – a rhythm that feels perfectly aligned with this moment for ATC.

Thank you for being here, for supporting live theatre, and for sharing this experience with us.

Matt August
Kasser Family Artistic Director

Ana Rose O'Halloran
Executive Director



Check Out ATC's Social Pages and Connect With Other Theatre Fans!



[Facebook.com/arizonatheatrecompany](https://www.facebook.com/arizonatheatrecompany)



[instagram.com/arizonatheatre](https://www.instagram.com/arizonatheatre)



[tiktok.com/@arizonatheatre](https://www.tiktok.com/@arizonatheatre)



[linkedin.com/company/arizonatheatrecompany](https://www.linkedin.com/company/arizonatheatrecompany)



[threads.net/@arizonatheatre](https://www.threads.net/@arizonatheatre)



[x/arizonatheatre](https://x.com/arizonatheatre)



ATC.ORG / 833-ATC-SEAT

ATC AT THE TEMPLE OF MUSIC AND ART

SEASON SPONSOR: I. MICHAEL & BETH KASSER

CORPORATE SEASON SPONSOR: LAVIDGE

NOTE FROM THE DIRECTOR



Director/Choreographer Dell Howlett

nightlife, and creativity, but also marked by struggle, segregation, and economic challenge. Understanding the richness and complexity of that experience informs every choice in this production; the movement, the music, and the laughter all emerge from a deep engagement with the dissonant world Fats Waller inhabited and loved.

This production's heightened theatricality – its burlesque, vaudevillian flair – is not just stylistic; it is investigative. I am interested in how performers are shaped, framed, and sometimes trapped by the very applause they command. Inspired by Paul Laurence Dunbar's poem "We Wear the Mask," this production examines the smiles, humor, and showmanship that concealed labor, complexity, and strategy. In this staging, Waller's mask is made visible, interrogated, and at moments allowed to slip – revealing both the joy and the cost of performance.

Our fabulous five actors bring this music and movement to life with intelligence, wit, and irrepressible charm. Every nuance of timing, every wit, every dance step is grounded in authentic jazz dance values. We are thrilled to collaborate with music director and pianist Abdul Hamid Royal, whose uncompromising musicality is Waller worthy! As both director and choreographer, I have had the great privilege of shaping a piece that allows music, movement, and character to breathe together and that centers the big, bold humanity that lived within Waller's music.

We are beyond excited to bring this version of *Ain't Misbehavin'* to Arizona Theatre Company and to audiences across Arizona. *Ain't* invites you to revel in Waller's swing, virtuosity, and laughter – while also asking you to consider what lies beneath it. Get ready for a party to celebrate a legacy that continues to shape American culture today.

"To Fats!"

Yours in the art,

Dell Howlett
Director/Choreographer

Ain't Misbehavin' is first and foremost a celebration of Harlem Renaissance icon Thomas "Fats" Waller, his astonishing body of work, and his singular genius as a stride pianist. Before the jokes, before the mythical appetites, there was always the music. Fats Waller's compositions swing with irrepressible vitality, marrying technical brilliance with emotional warmth. His stride piano style – athletic, orchestral, and endlessly inventive – was not merely accompaniment; it was storytelling. He could make the piano shout, whisper, laugh, and testify all within the same chorus. This production begins in admiration of that mastery and the era of American life that inspired it.

The Harlem Renaissance was a period of extraordinary artistic discovery. It was a moment when Black artists, writers, musicians, and performers reshaped American culture, claiming space for joy, intellect, and innovation in the face of systemic racism. Waller was a product of this movement and this Harlem – a vibrant, complex community alive with music, theater,

ABOUT THE PLAY

Joy has a way of sticking around. Long after a melody fades or the lights go down, it lingers tapping its foot, daring you not to smile. Daring you not to think and remember. Welcome to *Ain't Misbehavin'*. When this revue premiered on Broadway in 1978, it wasn't just reviving the music of Thomas "Fats" Waller, it was throwing open the doors to a world bursting with rhythm, wit, and irresistible charm. Part tribute, part homecoming, *Ain't Misbehavin'* invited audiences to step into a 1930s Harlem nightclub and remember just how alive this music still is.

Born in New York City in 1904, Waller was a stride piano virtuoso with impeccable timing, embodying a larger-than-life personality with a gift for spontaneity. Like many Black musicians of his era, he was exploited by the industry, writing for every corner of the exploding entertainment industry, but unable to reap the rewards afforded to white entertainers. Yet with his staggering output, his influence on American jazz was immeasurable.

Conceived by Murray Horwitz and Richard Maltby Jr., *Ain't Misbehavin'* strings together dozens of Waller's songs into an evening that feels less like a traditional musical and more like a Great Night Out. Picture the smoky air, piano and brass blaring, voices blending, and a room buzzing with laughter and lust. But don't let that lighthearted vibe fool you. Beneath the sparkle is a portrait of Black artistry, survival, and self-expression in a world that didn't always make room for it.

Ain't Misbehavin' is a big, bold, unapologetic celebration with a conscience. It's a joy that demands space and a legacy that demands a lens. Songs like "This Joint Is Jumpin'" feel like an open invitation to the dance floor, capturing the energy of Harlem hotspots like the Savoy Ballroom, where music and movement offered brief but powerful escapes from segregation and limitation. Elsewhere, tunes like "Honeysuckle Rose" and the title number "Ain't Misbehavin'" playfully tangle with love, loyalty,

and temptation, winking at the audience while still probing for an honest examination. It's fun, curious, and deeply human.

What emerges over the course of the evening is a subtle push and pull between performance and truth. The singers shift moods and personas – mischievous one moment, vulnerable the next – echoing the reality many Black entertainers faced in the early 20th century. Onstage, they were expected to charm, joke, and delight. Offstage, the world was far less forgiving. Waller's music lives right in that tension. His songs make you laugh, then catch you off guard with a line that suddenly feels personal. The show leans into those contrasts, reminding us that entertainment has always carried more weight than it is often given credit for.



Waller died at just 39, but his music never stopped having an impact. *Ain't Misbehavin'* gathers his music, letting it speak for itself, cementing his enduring legacy with focus and power. His humor, warmth, and emotional intelligence pulse through every note, resulting in a show that invites you to listen, laugh, and lean in. So, get comfy in that chair, lace up your shoes, open your heart, and see what happens when history swings!

CAST (IN ALPHABETICAL ORDER)



Taylor Colleton (Role Originated by Armelia McQueen) – ATC debut. BROADWAY: *Water for Elephants* and *Hadestown*. OFF-BROADWAY: *Henry Box Brown: The Musical* (Children’s Theater Company). REGIONAL: *Jesus*

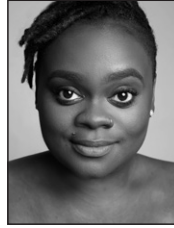
Christ Superstar (Asolo Repertory Theatre), World Premiere of *Water for Elephants* (Alliance Theatre), *Beauty and the Beast* (Ordway Center for the Performing Arts), *Oklahoma* (Denver Center for the Performing Arts), *Drowsy Chaparrone* (Totem Pole Playhouse), and *Rock of Ages* (Norwegian Cruise Line). NATIONAL TOUR: *Beauty and the Beast*. CARNEGIE HALL: *Harmonic Convergence Guest Artist*. EDUCATION: Proud UArts alumni. Endless thanks and love to God, DGRW, family and friends. IG: @taylorcolleton



Wilkie Ferguson III (Role Originated by Andre De Shields) – ATC debut. BROADWAY: *Porgy and Bess* (Original Broadway Cast), *Motown: The Musical* (Original Broadway Cast), and *Wonderland* (Original Broadway Cast).

NATIONAL TOURS: *In the Heights* and *Hairspray*. OFF-BROADWAY/REGIONAL: *Fetch Clay, Make Man* (Kirk Douglas Theatre), *Recorded In Hollywood* (Ovation nom.), and *Cotton Club Parade* (Encores). MUSIC DIRECTOR: *9 to 5* (Musical Theatre West), *Newsies* (5-Star Theatricals), and *Kinky Boots* (Moonlight Stage). COMPOSER/ORCHESTRATOR: *Show Way* (Kennedy Center) and *Parrotheads* (Netflix, Jimmy Buffet Documentary). EDUCATION: New World School of the Arts, Morehouse College (math and music), and Eastman School of Music (classical piano). Former faculty of the

Boys’ Choir of Harlem as assistant director/music theory instructor.



Keirsten Hodgens (Role Originated by Nell Carter) – ATC debut. BROADWAY: *SIX the Musical*. NATIONAL TOURS: *Jesus Christ Superstar: 50th Anniversary Tour*. REGIONAL: Jenna in *Waitress*, Lorrell in *Dream-*

girls, Angie in *Prelude to a Kiss* (South Coast Repertory, Harris Theater at The Wilson Center), Sharon in *Master Class* (TimeLine Theatre Company), Dragon in *Shrek: The Musical*, and Sarah’s Friend in *Ragtime* (Marriott Theatre). TV: *Goosebumps* (Hulu and Disney+). “Forget all of the rules, do you!” IG: @shespeaksmusic | @wholeartistmanagement



Anthony Murphy (Role Originated by Ken Page) – ATC debut. BROADWAY: *The Wiz* as Lord High Underling and understudy for The Lion and The Wiz; and *Diana The Musical* as Paul Burrell. NATIONAL TOUR: Originated the Genie in the First National Tour of *Disney’s Aladdin* (2018). OFF-BROADWAY: *Titanique* as Victor Garber, *The Pirate La Dee Da* (Atlantic Theatre Company), and *Blue Plate Special* (Ars Nova). WORLD PREMIERE: *The Devil Wears Prada* musical written by Elton John. EDUCATION: Directing and Choreography at Otterbein University, trained vocally under world-renowned opera tenor Brian Cheney. @stanthonysings | #blessedtobeablessing

CAST (IN ALPHABETICAL ORDER)



Aerie Williams (Role Originated by Charlaine Woodward) – ATC debut. OFF-BROADWAY: *Trevor: The Musical* (Stage 42). REGIONAL: Shug Avery in *The Color Purple* (Goodman Theatre, most recent), *Oedipus Trilog*y – *Oedipus Rex* (Court Theatre), *Gospel at Colonus*

(Court Theatre, Getty Villa), *Antigone* (Court Theatre), *Nina Simone: Four Women* (Indiana Repertory Theatre), *Jersey Boys* (ACT of CT), *Memphis* (Porchlight Music Theatre), *Lena Horne and Josephine Baker* (Black Ensemble Theater), and productions at Drury Lane, Paramount, and Congo Square. TV: Recurring on *The Chi* (Showtime) and *Empire* (FOX). AWARDS: Black Theater.

THE CREATIVE TEAM

Thomas “Fats” Waller (Music) – Waller (May 21, 1904 - December 15, 1943) was an African-American jazz pianist, organist, composer, and comedic entertainer. Born Thomas Wright Waller in New York City, he studied classical piano and organ before apprenticing himself to legendary Harlem stride pianist James P. Johnson. Johnson introduced Waller to the world of rent parties (a party with a piano player, designed to help pay the rent by charging the guests), and soon he developed a performing career. Waller was an excellent pianist – now often considered one of the very best who ever played in the stride style – but his songwriting and his lovable, roguish stage personality (“One never knows, do one?”) overshadowed his playing. Before his solo career, he played with many performers, from Erskine Tate to Bessie Smith, but his greatest success came with his own five- or six-piece combo, Fats Waller and His Rhythm. Among his songs are “Squeeze Me” (1919), “Ain’t Misbehavin’” (1929), “Blue Turning Grey Over You” (1930), “Honeysuckle Rose” (1929), “I’ve Got a Feeling I’m Falling” (1929), and “Jitterbug Waltz” (1942). He collaborated with the Tin Pan Alley lyricist Andy Razaf and had a commercially successful career, which according to some music critics eclipsed his great musical talent. Waller also made a successful tour of the British Isles in the late 1930s and appeared in one of the earliest BBC Television

broadcasts. He also appeared in several feature films and short subject films, most notably *Stormy Weather* in 1943. With Razaf he wrote “What Did I Do (To Be So Black and Blue)?” (1929), which became a hit for Louis Armstrong. This song, a searing treatment of racism – black and white – calls into question the accusations of “shallow entertainment” leveled at both Armstrong and Waller. His nickname “Fats” came about because he weighed nearly 300 pounds. His weight and drinking are believed to have contributed to his death on December 15, 1943, at age 39, when he died aboard an eastbound train in the vicinity of Kansas City, Missouri, following a West Coast engagement.

Richard Maltby Jr. (Conceived) – BROADWAY: Conceived and directed two Tony Award-winning musicals, *Ain’t Misbehavin’* (1978, Tony, N.Y. Drama Critics, Outer Critics, Drama Desk Awards – also Tony Award for Best Director) and *Fosse* (1999, Tony, Outer Critics, Drama Desk Awards). Also conceived and directed *Ring of Fire* (2006). With composer David Shire: Director/lyricist for *Baby* (1983, seven Tony noms.); Lyricist for *Big* (1996, Tony nom. Best Score, also Dominion Theatre London, 2019). With Alain Boublil and Claude-Michel Schönberg: Co-lyricist for *Miss Saigon* (Evening Standard Award, London, 1990; Tony nom. Best Score, 1991); and Co-lyricist for *The Pirate*

////// **THE CREATIVE TEAM** /////

Queen (2007). Director for *The Story of My Life* (2009); Director/co-lyricist for Andrew Lloyd Webber's *Song & Dance* (1986, Tony Award for star Bernadette Peters). OFF-BROADWAY: With David Shire: Director/lyricist for *Starting Here*, *Starting Now* (1977, Grammy nom.) and *Closer Than Ever* (1989, two Outer Critics Circle Awards for Best Musical, Best Score; also Off-Broadway Alliance Award, Best Musical Revival, 2013; and London Jermyn Street Theatre, 2014). REGIONAL: Director for *Just Jim Dale* (Roundabout Theatre 2014, Vaudeville Theatre, London, 2015); Lyricist/conceiver for *Take Flight* (Menier Chocolate Factory, London, 2010; McCarter Theatre, 2012); Book and lyrics for *Waterfall* (2015, Pasadena Playhouse and Seattle's Fifth Avenue Theatre); and Lyricist for new musical *Sousatzka*, 2017, Toronto). FILM: Screenplay for *Miss Potter* (2007, Christopher Award Best Screenplay). Contributes cryptic crossword puzzles to *Harp-er's Magazine*. Son of well-known orchestra leader; Five children: Nicholas, David, Jordan, Emily, and Charlotte.

Murray Horwitz (Conceived) – American playwright, lyricist, NPR broadcaster, and arts administrator. BROADWAY: Tony Award-winning musical *Ain't Misbehavin'* (Plymouth/Belasco Theatres) and *André DeShields' Harlem Nocturne* (Latin Quarter). OFF-BROADWAY: *Half a World Away* (Jewish Repertory). Horwitz appeared in the one-man show *An Evening of Sholom Aleichem*, which he continues to perform at The Kennedy Center, The Manhattan Theatre Club, and The New York Shakespeare Festival/ Public Theater.

Dell Howlett (Director and Choreographer) – ATC: *Ain't Misbehavin'* assistant choreographer (2009). New York-based Virginia-born Director/Choreographer, Head of Dance for the New Studio on Broadway at the Tisch School of the Arts at NYU. REGIONAL (Most Recent): *Milo Imagines the World* (Alliance Theatre), *Millions* (World Premiere - Alliance Theatre), *Furlough's*

Paradise (Geffen Playhouse), *Jelly's Last Jam* (Pasadena Playhouse), *A Midsummer Night's Dream* (Classical Theatre of Harlem), *Billy Strayhorn: Something to Live For* (World Premiere - Pittsburgh Public Theater), *Sonnets & Soul* (World Premiere - Howard University), *Toni Stone* (Alliance Theatre and Milwaukee Repertory), *It Came From Outer Space* (World Premiere - Chicago Shakespeare Theater and TheatreSquared), *R&H Cinderella* (Alabama Shakespeare Festival), *Paradise Square* (World Premiere - Associate to Bill T. Jones, Berkeley Repertory Theatre), *Guys and Dolls* (Guthrie Theater), *The Wiz* (Ford's Theater), and *WigOut* (Studio Theater). Two-time Suzi Bass Award Winner in Directing and Choreography, proud member of the Stage Director and Choreographer's Union. IG: @aristotlejr

Abdul Hamid Royal (Music Director) – ATC debut. BROADWAY/INTERNATIONAL/ NATIONAL: Tony Award-nominated *Five Guys Named Moe*, *Sophisticated Ladies*, *Ain't Misbehavin'*, *Jelly's Last Jam*, *The Wiz*, *Truly Blessed*, *Sound of Music*, *Concerts for the Earth*, *Twist, Fiddler on the Roof*, *Betsy Brown*, *Colors of Christmas*, *Smokey Joe's Café*, and *The Life*. REGIONAL: *Alice in Wonderland*, *A Chorus Line*, *Songs of Nobodies*, *Lady Day*, *Big River*, *Black Pearl Sings*, *Sirens of Song*, *La Cage Aux Folles*, and *Blues in the Night*. COMPOSER/ARRANGER: *Five Guys Named Moe*, *Truly Blessed*, *Body and Soul*, *Twist*, *Colors of Christmas*, and *Cole Porter Festival*. RECORDING ARTISTS: Billy Porter, Chaka Khan, Natalie Cole, Liza Minelli, Jennifer Holliday, David Foster, Seidah Garrett, Brenda Russell, Melissa Manchester, the LA Philharmonic, Stevie Wonder, Lillias White, Dave Weckl, and Phil Collins. His one-man show *But Not For Me* received critical acclaim at the Gilmore Piano Festival. AWARDS: The Ovation, LA Drama Critics Circle, NAACP Image Award for *The Gospel at Colonus* and *Five Guys Named Moe*, Stage Scene LA Award for *Recorded in Hollywood*. Nominations for Best Music Direction and Jeff Award for

////// **THE CREATIVE TEAM** ////

Lady Day and the Barrymore Award for *Alice in Wonderland*.

Edward E. Haynes Jr. (Scenic Designer) – ATC: *Blues in the Night*, *Master Class*. REGIONAL: The Pasadena Playhouse, Laguna Playhouse, La Jolla Playhouse, Geffen Playhouse, The Guthrie Theatre, Muny Opera, Kansas City Rep, Oregon Shakespeare Festival, Mark Taper Forum, Ebony Repertory Theatre Co., South Coast Rep, Kirk Douglas Theatre, Berkeley Rep, East West Players, Hollywood Bowl, Marin Theatre Co., TheatreWorks, Intiman Theatre, Trinity Rep, Pittsburg City Theater, Alley Theatre, Alliance Theatre, and many others. TV: MTV’s *Spring Break* 2012 and 2011, *Hip Hop Harry*, *The Tony Rock Project*, and *Culture Clash*. edhaynes.carbonmade.com

Jahise LeBouef (Costume Designer) – ATC debut. REGIONAL: Hartford Stage (*Trouble in Mind*, *Hot Wing King*), Pittsburgh Public Theatre (*Billy Strayhorn: Something to Live For*), Bristol Riverside Theatre (*A Raisin in the Sun*), Baltimore Center Stage (*Hot Wing King*), Alliance Theatre (*Milo Imagines the World*). FILM/TV: Costume Coordinator for *Blue Bloods* (CBS) and *The Endgame* (NBC), Designing and Styling for *Dance for Me* (BET+), Nike x LEGO, and Anthropologie/BHLDN. Assisted Tony Award-winning designer Paul Tazewell on *MJ the Musical* and Academy Award-nominated designer Arianne Phillips on *The Devil Wears Prada* (Musical). Proud member of United Scenic Artists Local 829. IG: @jahise.lebouef | jahiselebouef.com.

Rui Rita (Lighting Designer) – BROADWAY (Selected): *Velocity of Autumn*, *Trip to Bountiful*, *Present Laughter*, *Dividing the Estate*, and *Enchanted April*. OFF-BROADWAY (Premieres): *A Sherlock Carol* (New World Stages), *Paradise Blue* (Signature), *Horton Foote’s Old Friends & Orphans’ Home Cycle* (Hewes Award, Signature), *Happiest Song Plays Last* (Second Stage), *Just Jim Dale* (Roundabout), *Nightingale* and

Moonlight and Magnolias (Manhattan Theatre Club), and *Carpetbagger’s Children and Far East* (Lincoln Center Theater). OFF-BROADWAY (Revivals): *The Piano Lesson* (Signature), *Talley’s Folly* (Roundabout), and *Engaged* (Obie Award, TFANA). REGIONAL (Recent): Alley, Bucks County, Center Theatre Group, Ford’s, Guthrie, Huntington, Oregon Shakespeare, Old Globe, Pasadena Playhouse, and Signature DC. designbyrui.com

Daniel Perelstein Jaquette (Sound Designer) – ATC: *Heist*, *Blues in the Night*, *Dial M for Murder*, *Intimate Apparel*, *Private Lives*, *Nina Simone: Four Women*; Arizona Theatre Company’s 2025-2026 Resident Artist. Freelance sound designer, composer, and musical director; professor of sound design (theatre) at Arizona State University since 2019. RECENT DESIGNS/ORIGINAL MUSIC: Opera Philadelphia, Cincinnati Playhouse, Cleveland Playhouse, McCarter Theatre, Actors’ Theatre of Louisville, Geva Theatre, Wilma Theater, Arden Theatre, Roundabout Theatre, People’s Light, and others. AWARDS: Two Barrymore Awards and 16 Barrymore Award noms. in three categories, finalist for the F. Otto Haas award; Independence Foundation Fellowship in the Arts in 2013 to explore the relationship between sound design and the visual arts. AFFILIATIONS: Theatrical Sound Designers and Composers Association and United Scenic Artists local 829. DanielPerelstein.com

Darlene Miyakawa (Stage Manager) – ATC: *Dial M for Murder* (SM). REGIONAL: Barrington Stage Company, California Symphony, East West Players, Fort Worth Opera, Geffen Playhouse, Getty Villa, Geva Theatre Company, LA Dance Company, LA Opera, LA Philharmonic, Long Beach Opera, New York City Opera, Opera San Antonio, Opera San Jose, Piedmont Opera, South Coast Repertory, Tri-Cities Opera, and Watermill Festival. Proud member of both AEA and AGMA.

////// **THE CREATIVE TEAM** ////

Suzanne Apicella (Assistant Stage Manager)

– ATC debut. BROADWAY/PRE-BROADWAY: *A Wonderful World, Fiddler on the Roof, Burn the Floor*. NATIONAL TOURS: *The Producers, Sweeney Todd, Rock of Ages, The Addams Family, Jersey Boys, Spamalot, The Play That Goes Wrong*. REGIONAL: *Good People, Plaza Suite* (Maltz Jupiter Theatre), *Nice Work...* (Ogunquit), *Rock of Ages* (Gateway), *Singing in the Rain* (Engeman), *Jersey Boys* (White Plains PAC), *Metamorphosis, The Goat* (Florida Studio Theatre). NYC: *Dr. Seuss's...Grinch Stole Christmas* (MSG).

THE TRC COMPANY/Merri Sugarman (Casting Director)

– ATC: *Bob & Jean: A Love Story*. Led by partners Claire Burke, Kevin Metzger-Timson, Xavier Rubiano, and Peter Van Dam. BROADWAY: *Dead Outlaw, BOOP! The Musical, Stephen Sondheim's Old Friends, Buena Vista Social Club, Death Becomes Her, Left on Tenth, The Outsiders, SLX, Aladdin*. NATIONAL TOURS: *The Phantom Of The Opera, Water for Elephants, Beauty & The Beast, The Wiz, Back To The Future, Mamma Mia!, Les Misérables*. The TRC Company is proud to continue the casting legacy of Tara Rubin Casting and Johnson-Liff Casting.

////// **THE MUSICIANS** ////

Abdul Hamid Royal (Piano/Conductor) See bio on page 10.

Jervonny (JV) Collier (Bass) – ATC debut. Toured, performed, and recorded with Gladys Knight and The Pips, Bruce Hornsby, The Pointer Sisters, Frankie Valle, The Temptations, Marilyn McCoo and Billy Davis Jr., Was Not Was, The Band, Peabo Bryson, Ruben Studdard, Oleta Adams, Al Jarreau, Roberta Flack, Larry Carlton, Boney James, Malissa Manchester, and many others.

Land Richards (Percussion) – ATC: *Blues in the Night*. Independent artist who plays a wide variety of music in various performance, recording, and live settings including with Gladys Knight and the Pips, Stevie Nicks, Peabo Bryson, George Benson, Patti Austin, Bobby Caldwell, Cab Calloway, James Darren, Ben Vereen, Jose Carreras, Plácido Domingo, Hubert Laws, Al Jarreau, Diana Ross, Michael Bolton, Lee Ritenour, Larry Carlton, Bruce Hornsby, Melissa Manchester, Joe Sample, and Exile of Japan. Current member of the group Hiroshima. STAGE MUSICALS: *Blues in the Night, Swan, Five Guys Named Mo, Recorded in Hollywood: The John Dolphin Story, and Ain't Misbehavin'*. TV: *The Tonight Show,*

Rick Dees Into The Night, The Paul Rodriguez Show, the Byron Allen Show, The Arsenio Hall Show, Good Morning America, Soul Train, Dick Clark's Rocking New Year's Eve, Sesame Street, VH1, UNCF, ALMA, NAACP, Motown Live, and TV Land Awards. Also, appearing at a club near you!

Samuel Lupe (Reeds) – ATC debut. Flutist, woodwind doubler, and educator based in Arizona, known for expressive sound, stylistic range, and commitment to expanding access to music education in Indigenous and rural communities. Soloist, chamber musician, and ensemble collaborator with experience spanning classical, contemporary, jazz, and world flute traditions, and community-based performance projects. Active clinician and coach, developer of innovative workshops, flute camps, and lecture-recitals that highlight both traditional repertoire and cross-cultural musical connections. EDUCATION: Master of Music in Flute Performance, Arizona State University.

Kristal Ramsey (Trombone) – ATC debut. Phoenix-based trombonist, pianist, and educator with over 20 years of experience in gospel, jazz, and R&B settings. Performed with nationally recognized gospel artists including Fred Hammond,

THE MUSICIANS

Yolanda Adams, Donnie McClurkin, Tye Tribbett, Tasha Cobbs Leonard, and Le’Andria Johnson. Performs throughout the Valley in jazz and pop ensembles, known for her expressive improvisation and warm trombone tone. Teaches piano at Rosie’s House: A Music Academy for Children, inspiring more than 200 young musicians each week. EDUCATION: Bachelor’s degree in Music Education, Master’s in Curriculum & Instruction from Arizona State University.

Kurt Finchum (Trumpet, Flugelhorn) – ATC: *Blues in the Night, All Night Strut*. Longtime veteran of the Phoenix music scene. NATIONAL TOUR: *Chicago* starring Christie Brinkley.

Performed with Lou Rawls, Billy Preston, Deniece Williams, Wayne Newton, Linda Rondstadt, Percy Sledge, Johnny Mathis, Bob Newhart, Don Rickles, Heatwave, Don McLean, Steve Lawrence & Eydie Gorme, Little Anthony & the Imperials, The Manhattans, Debby Boone, Jane Russell, Shirley Jones, and Tim Conway. Performed across the Western U.S. with Sam Moore (of Sam & Dave) and worked with several of the legendary big bands including the Smithsonian Jazz Masterworks Orchestra and the Harry James and Jimmy Dorsey Orchestras, and locally with the Dennis Rowland Big Band, the New Guard Big Band, and Arizona Jazz Masterworks Orchestra.

EXECUTIVE LEADERSHIP



Matt August is the Kasser Family Artistic Director. He is a theatre, opera, and film director and educator whose productions have broken box-office records on Broadway (*Grinch*) and played in London, across the UK, Off-Broadway, in major

Regional theatres, at festivals, on national tours, at the Grand Ole Opry, and for three holiday seasons at Madison Square Garden. His work has been featured on television talk shows and NPR and performed at the White House for President Bush, Cabinet Members, and military children. His ATC director credits are *Bob & Jean: A Love Story, Scrooge!, King Charles III, and Discord*.

He was the Associate Director to multi-Tony-winning director Jack O’Brien on the Broadway productions of *Henry IV, The Full Monty, The Invention of Love, and Imaginary Friends*. He

was promoted to Resident Director on Tom Stoppard’s *The Invention of Love*, for which both lead actors received Tony Awards, and on the Tony-winning *Henry IV* (Best Director and Best Revival), starring Kevin Kline and Ethan Hawke. He also directed the Australia production of *The Full Monty*, earning a Helpmann Award co-nomination for Best Direction. He has directed World, American, and Regional Premieres including the record-breaking productions of *Sixteen Wounded* at the Cherry Lane and Long Wharf Theatres (starring Martin Landau), *In the Heights* (starring Anthony Ramos in his AEA debut), and in 2006 and 2007, August directed the Broadway productions of *Dr. Seuss’ How the Grinch Stole Christmas – The Musical*, which broke box office records and has been touring every year since 2008, including a UK production in 2019. His production of *A Christmas Carol* ran for five years at Ford’s Theatre, and his Shakespeare productions include *Much Ado About Nothing* (Pioneer), *Two Gentlemen of Verona* (Old Globe and Acting Company), *Tempest* (Hanger), *Romeo and Juliet* (National Shakespeare Company), and *Merry Wives of*

EXECUTIVE LEADERSHIP

Windsor (Acting Company). He directed the operas *La Boheme* (starring Marina Costa Jackson) and *Pirates of Penzance* at Noorda Center. In addition to theatre, he was awarded the Panavision New Filmmakers Grant and directed the award-winning short family film *How to Get to Candybar*.

August's productions have been recognized with nominations and awards from LA's *Ovation*, Washington, D.C.'s *Helen Hayes*, Arizona's *Mac*, San Francisco's *Bay Area Critics*, *Broadway World*, Utah's *Audience Choice*, and Australia's *Helpmann Awards*. His work has appeared on Year End Top Ten lists for the *LA Times*, *San Francisco Chronicle*, *Huffington Post*, *Arizona Republic*, *Oakland Tribune*, *Arizona Daily Star*, *San Jose Mercury News*, and *NPR/KQED*. He has been awarded internships, fellowships, and residencies from the Old Globe Theatre, Drama League, Oregon Shakespeare Festival, The Acting Company, Robert Wilson's Watermill Center, the Juilliard School, The Wrestling School, and San Francisco's Zen Center.

He served on panels and committees for the Society of Directors and Choreographers, and has mentored emerging directors through both the SDCF and Drama League as well have having taught directing as an Assistant Professor at the largest university in Utah. Since arriving at ATC in Jan 2023, August has launched the National Latine Playwright's Award into a forward-facing festival, developing new plays and musicals by Tony winning artists, and is building partnerships with Univ of AZ, PCC and ASU. His portfolio can be found at MattAugust.com



Ana Rose O'Halloran is ATC's newly appointed Executive Director. She is a nonprofit arts executive with over 17 years of experience leading arts organizations in strategic planning, fundraising, and operations. From 2015 until November

2025, she served as Executive Director and then Producing Executive Director of Antaeus Theatre Company in Los Angeles, where she produced more than 25 acclaimed productions and guided the organization through significant growth, including a \$3 million capital campaign, record fundraising, expanded audiences, and innovative programming such as *The Zip Code Plays: Los Angeles*, which reached over 100,000 listeners worldwide.

Previously, O'Halloran held senior leadership roles at The Pablove Foundation, where she oversaw the expansion of national programs, and began her career at Center Theatre Group in development and communications.

O'Halloran holds an M.F.A. in Theatre Management from California State University, Long Beach, and dual B.F.A. degrees in Theatre Management and Performance from Ohio University. She is deeply committed to strengthening arts organizations and expanding access to live theater as a cornerstone of vibrant civic life.



CORPORATE, FOUNDATION, AND GOVERNMENT PARTNERS

Our work is made possible due to the generosity of many corporations, foundations, and government supporters. Through these partnerships, we can maintain a standard of artistic excellence while providing greater access to all.

Donations made in the last 365 days, list pulled 01/07/2026.

2025/2026 SEASON SPONSOR:

I. MICHAEL AND BETH KASSER

2025/2026 CORPORATE SEASON SPONSOR:

LAVIDGE

Artistic Angels

\$100,000+

Anonymous
Flinn Foundation
The Connie Hillman Family Foundation

Ovation Circle

\$50,000 - \$99,999

Garcia Family Foundation
LAVIDGE
Margaret E. Mooney Foundation at Tucson Foundations
The Shubert Foundation

Spotlight Circle

\$25,000 - \$49,999

Burton Family Foundation
Southwestern Foundation for Education and Historical Preservation
SRP
Richard P. Stahl Charitable Fund

Artistic Director's Circle

\$10,000 - \$24,999

APS
Arizona Commission on the Arts
Arizona Community Foundation
Carstens Family Funds
Century Arts Foundation
The DesertLeaf
HSL Properties, Inc.
Margaret T. Morris Foundation
National Endowment for the Arts
Virginia G. Piper Charitable Trust
RBC Wealth Management
Stardust Foundation
Tucson Desert Song Festival

Producer's Circle

\$6,000 - \$9,999

Athletico
James and Grace Cain Foundation
Holualoa Arizona, Inc
The John and Helen Murphey Foundation

Director's Circle

\$4,000 - \$5,999

AARP Arizona
Ameriprise Financial
PICOR Charitable Foundation
Tempe Diablos Charities, Inc.

Designer's Circle

\$2,000 - \$3,999

Applied Materials Foundation
The Stocker Foundation
Ben Walls Films
Witthoft Apprill Family Foundation

Insider

\$1,000 - \$1,999

Leonard J. and Irene Brown Foundation, Inc.
Desert Diamond Casino
The Gertrude and Charles Gordon Foundation
HSLopez Family Foundation
The Stocker Foundation

Patron

\$250 - \$999

The Benevity Community Impact Fund
Johnson & Johnson Matching Gifts Program
West Press Printing



DONOR ADVISED FUNDS

Donations made in the last 365 days, list pulled 01/07/2026.

Ken and Kelley Abrahams
Charitable Fund at The
American Gift Fund

Jada Ahern recommended from
National Philanthropic Trust

Ann and Bob Charitable
Fund at DAFgiving360

Anonymous Donor Advised
Fund at Fidelity Charitable

Daniel Asia Fund at
DAFgiving360

ASU & ASUF at Valley of
the Sun United Way

Paul and Alice Baker
Philanthropic Fund of the
Jewish Community Foundation
of Southern Arizona

BD2 Donor Advised Fund at
the Community Foundation
for Southern Arizona

Berg Charitable Gift at
Fidelity Charitable

Jeffrey Berg and Debra Paget
Fund at Cornell University

Archibald and Laura Brown
Family Trust at MS GIFT

Burton Family Foundation at
Arizona Community Foundation

Carstens Family Funds at the
Arizona Community Foundation

Frances Chapin Foundation
Philanthropic Fund of
United Way of Tucson
and Southern Arizona

Charitable Contributions
for Improving Quality of
Life Donor Advised Fund
at Fidelity Charitable

Amy Charles and Steven
McMillan Donor Advised Fund
at the Jewish Community
Foundation of Southern Arizona

D Squared Foundation at the
Arizona Community Foundation

The Bill and Donna Dehn
Charitable Fund of the Ayco
Charitable Foundation

Samuel Denmark Family
Fund at Fidelity Charitable

Laura and Mike DiChristofano
Donor Advised Fund at
Morgan Stanley Global
Impact Funding Trust, Inc.

Norman and Tricia Don
Charitable Fund at American
Endowment Foundation

Gerald Ehrlich Donor Advised
Fund at Bank of America
Charitable Gift Fund

Engels-Medland Fund at
Fidelity Charitable

Faitelson Family Donor Advised
Fund at the Jewish Community
Foundation of Southern Arizona

Kathy Garrett Giving Fund
at Fidelity Charitable

Jane Gellman Donor Advised
Fund at the Jewish Community
Foundation of the Milwaukee
Jewish Federation

Janet Gerdes Giving Account
at Fidelity Charitable

G, E & E Ciclas Family
Foundation of Raymond
James Donor Advised Funds

Robert and Laurie Kaye Glaser
Donor Advised Fund held
by the Jewish Community
Foundation of Southern Arizona

Louise R Glasser Gift Fund
at Fidelity Charitable

Thomas Godfrey Charitable
Fund at Fidelity Charitable

Thomas Godfrey Charitable
Fund at Schwab Charitable

Gordon Family Fund at
Fidelity Charitable

Greenleaf/Molberg Family
Fund of DAFgiving360

Nora Hannah and David
Dunteman Donor Advised
Fund at Fidelity Charitable

Heid Family Charitable Fund
at Fidelity Charitable

Susan and Craig Hupper Fund
at Vanguard Charitable

Israel Charitable Fund from
US Charitable Gift Trust

Mack Jones Donor Advised
Fund at Schwab Charitable

Michael and Robin Kaiserman
Philanthropic Fund at The
Jewish Community Foundation
of Southern Arizona

Carolyn Kinney Donor Advised
Fund at DAFgiving360

Carol and Foster Kivel Family
Fund at the Community
Foundation for Southern Arizona

Norm and Teri Klein Donor
Advised Fund of DAFgiving360

Kwoh Family Charitable Fund
at Vanguard Charitable

Sally Lanyon Donor Advised
Fund at the Jewish Community
Foundation of Southern Arizona

Bertie and Jack Levkowitz
Donor Advised Fund at the
Jewish Community Foundation
of Southern Arizona

Barbara D. Molotsky
Donor Advised Fund at
Fidelity Charitable

Murphy Family Donor
Advised Fund at MS GIFT

William and Judy Murray
Charitable Giving Account
at Fidelity Charitable

Oak Tree Fund at Northern
Trust Charitable Giving of The
Chicago Community Foundation

Patrick J. O'Leary Foundation
at Fidelity Charitable

Rein Family Fund
of DAFgiving360 at
Schwab Charitable

George and Wendy Reiter of the
Ayco Charitable Foundation

Valerie and Herschel Richter
Donor Advised Fund of the
Jewish Community Foundation
of Greater Phoenix

Rosenzweig Donor Advised
Fund at the Jewish Community
Foundation of Southern Arizona

Rotkis Charitable Fund at
DAFgiving360 of Charles Schwab

Seiden Family Foundation at
Arizona Community Foundation

Daniel J. and Evelyn G.
Simon Donor Advised Fund
of the Jewish Community
Foundation of Greater Phoenix

Richard P. Stahl Charitable
Fund at American
Endowment Foundation

Starr Fund at Fidelity Charitable.

Stonewall Foundation Fund
of the Community Foundation
for Southern Arizona

John and Carolyn Stuart
Charitable Gift Fund at Bank
of America Charitable Gift Fund

Shoshana B. Tancer Survivor's
Trust Fund of the Arizona
Community Foundation

Thompson Legacy at
DAFgiving360 of Charles Schwab

Topaz Fund held at the
Community Foundation
for Southern Arizona

True Good Donor Advised
Fund of the Arizona
Community Foundation

Lewis Underwood Advised
Fund at Morgan Stanley GIFT

Vincent Survivor's Trust at
Northern Trust Company

Westergaard Giving Fund
at Fidelity Charitable

Zimmermann Family Fund
at Fidelity Charitable

INDIVIDUAL DONORS

Donations made in the last 365 days, list pulled 01/07/2026

Our work is made possible due to the generosity of many individual supporters. With the gifts from the following donors, we can maintain a standard of excellence while providing greater access to world-class live theatre.

Artistic Angels

\$100,000+

Alice and Paul Baker
Shirley Estes
I. Michael and Beth Kasser
Mary Beth and Jerry Radke
Susan and Jeffrey Rein
Nancy and Peter Salter
Elizabeth Marie Sprengle

Ovation Circle

\$50,000 - \$99,999

Judith Cosentino
Jeff Guldner and Sydney Reed
Sue and Arthur Martori
Kay and Walter Oliver

Spotlight Circle

\$25,000 - \$49,999

Anonymous
Dawna and Dan Calderone
Laurie and Robert Glaser
Patty and Jeff Radke
Jean and Fred Shaulls
Carol Starr

Artistic Director's Circle

\$10,000 - \$24,999

Mary Jan and Paul Bancroft
Denice Blake and John Blackwell
Susan and Brian Boylan
The Bill and Donna Dehn
Laura and Michael DiChristofano
Patricia Engels and Dick Medland
Deanna Evenchik-Brav and Garry Brav
Barb and Ted Frohling
Peggy Goulding
Suzanne and Les Hayt
Rebecca and Sid Johnson
Julie T. Kasper
Debra and Jim Larson
Bill Lewis and Rick Underwood
Becky and Jack Moseley

Elaine and Arnold Murphy
Mary and Matthew Palenica
Sylvia Pozarnsky
Herschel Rosenzweig
Cathleen and Bill Small
Emily Vincent
Judy Weill
Linda Wurzelbacher

Producer's Circle

\$6,000 - \$9,999

Char and Alan Augenstein
Cheryl Boone Isaacs
Connie and Rodney Boorse
Diane and Frank Fiduccia
Wendy and Richard Gilman
Ellyn and Jeff Gold
Marta and Steven Ketchel
Eileen and Thomas Rotkis
Carolyn and John Stuart
Erica and Ross Stutman
Susan Thompson
Andrew Watson
Taryn and Mark Westergaard
Jane and Jeff Young

Director's Circle

\$4,000 - \$5,999

Kelley and Ken Abrahams
Larry R. and Florence A. Adamson
Beverly Arrington
Mara and Keith Aspinall
Michael Bradford and Maikel Lahera Montero
Laura and Arch Brown
Jacklyn Connoy and William Maguire
Phyllis Cretors and Richard Cortesi
Cindy Rankin and Thomas Elliott
Becky and Dave Gaspar
Gail and Patric Ciclas
Lauren and Michael Gordon
Jericca, Xavier, and Xavi Gutierrez
Nora Hannah and David Dunteman

Cristine and Ed Hansen
Stephen and Amanda Heitz
Ann McLaren Helstad
Dr. and Mrs. Arthur L. Herbst
Suzanne and Steve Hilton
Bob Hungate
Carol Kivel
Teri and Norman Klein
Mary and Paul Koss
Jane Langenfeld and Duncan Chang
Gloria Lawrence
Lori Mackstaller
Sandra Maxfield
Terry McNellis and Crystal Carlin
Elyce and Mark Metzner
Adam James Michael and Manu Srivastava
Rosanna Miller
Caroline and Peter Morse
Michelle and Michael O'Connor
Patrick J. O'Leary and Karen Yamasaki
Jennifer and Charles Putney
Enid and Michael Seiden
Joan and Robbie Sherwood
Jacqueline Smith
Nancy Swanson
Marlene Tompkins and Jim Pyne
Barbara Vogen
James Wozelman and Denise Grusin
William Wissler
Lynne Wood and Bruce Dusenberry

Designer's Circle

\$2,000 - \$3,999

Anonymous (3)
Fran and Jim Allen
John Arbuckle, Jr.
Lori and David August
Marianne Ayres
Rosalie and Al Baumrucker
Barbara and Franklin L. Bennett Sr.
Jeffrey F. Berg and Debra H. Paget Fund
Barbara Bickel
Amy Charles and Steve McMillian
Virginia L. Clements
Bruce Covill and Lucia Renshaw
Alicia and Jon Crumpton
Leslie Dashew and Jack Salisbury
Jane and Ernest Del Rio
Jonae and F. Don DeLong
Joan Epstein
Norma and Stanley Feldman
Frank Flasch and Ann Strunk
Pamela and Thomas Frame
Ellis F. and Irene Stern Friedman
Cathleen and Thomas Godfrey
Laurie and Chuck Goldstein
Sandra Heiman
Betty Hum
Tamberly and Randel Jacob
Leslie Hall and Ted Jarvi
Helen and Robert Jennette
Mack Jones
Deborah Kelly
Drs. George and Maria Knecht
Nancy and Kent Kwoh
Marvin Landis
Sally and Richard Lehmann
Sandra Marshall and Gerald Maggiora
Barbara Molotsky
Melvin E. Mounts
Pat and Wayne Needham
Paul Vincent Perez
Ann H. Redding
Brenda and Jim Rowland
Rita and Steven Schlosser
Gerald Schwartz
Tracy and Marc Schwimmer
Arlene and Morton Scult
Ingeborg and Ralph Silberschlag
Amy Gittler and Michael Sillyman
Alla and Howard Steinberg
Karen Thornton
Lisa Ungar and Robert Fridrich
Weegee and Scott Whiteford

INDIVIDUAL DONORS

Donations made in the last 365 days, list pulled 01/07/2026

Insider

\$1,000 - \$1,999

Anonymous (2)
Jada Crellin Ahern
Peter Akmajian
Tony and Maria Beram
Susan Berg
Sandra and Charles Bonstelle
Cheri Boyer
Tyna Callahan and Dimitri Voulgaropoulos
Geraldine Cass
Mr. and Mrs. D. Chavez
Al and Sharyn Chesser
Barbara and John Cummings
Joanne Curtis
Barbara Davis
Thomas and Veronica Delgado
Mary Ann and Darryl Dobras
Tricia and Norman Don
Laylah and Nathan Douglas
Diane Drewery and Donald Wilks
Martha Durkin
Sandra and Colby Elliott
Catherine Falvey
Zarin and Martin Felli
Margaret and Dennis Fesenmyer
Judith and Richard Flynn
Deborah Friedman
Vicki Fuller and Michael Momon
Dr. Margot W. Garcia
Kathy Garrett
Jane Gellman
Carol and Paul Gerlach
Louise Glasser
Angela and Jeffrey Glosser
Kenneth Goldman
Edna Gray and Dave Johnson
Sara and Andrew Gyorke
Robert Haddock and Ann Stanton
John and Robin Harris
Louis and Sharon Hekman
Anne Leary and Bill Hemelt
Susan Hetherington
Tom and Sandy Hicks
Jacqueline Hufford-Jensen
Susan and Craig Hupper
Lisa and Gary Israel
Patricia Coyne-Johnson and John A. Johnson
Susan and Bob Johnstone
Bruce Kilbride and Lynn Krabbe

Kristin King
Tamar Rala Kreiswirth and John DeLuca
Janice and Robert Leff
Bertie Levkowitz
Barbara and Martin Levy
Humberto and Czarina Lopez
Thom and Kathy Mansur
Mary Lou and John Micheaels
Michelle and Joseph Millstone
Donnasu and Jim Moody
Donna Y. Moser
Trudi and Robert Murch
Judy and William Murray
Karen Nackard
Douglas Ng
Ochart Family Fund
Elise and Rick Oestreich
Jane and William Pearson
Jeanne Pickering and Mike Andrew
Emily Mimi Ravits
Wendy and George Reiter
Ann Roseman and Bob Huhn
Drs. Adib and Vivi Sabbagh
Trisa and Andrew Schorr
Cathy Shell
Evelyn G. and Daniel J. Simon
Olga and James Strickland
Lori and Richard Surina
Shoshana B. Tancer
Pamela Thaut
Ellen Thompson
Clifford Webster
Lois Wienshienk
Nancy and Ted Wolter

Patron

\$250 - \$999

Anonymous (16)
Joseph Acker
Joanne Adams
Mary Ahrens
Shawn Aiken
Pauline Albert
Susan and Larry Allen
Ovadan Amanova-Olsen
Susan Anderson-Smith
Marilyn and Greg Anthony
Lyn Ashton and Herbert Stevenson
Carolee and Daniel Asia
Eva Bacal
Rachel Barker

Jeannette and Robert Barnes
Martha Baron
Nancy and Kent Barrabee
Mark Battaglia and Ann Roberts
Clare and Duane Baylor
John Bechman
Jane and Jim Becker
Dr. Cash and Susanne Beechler
Frank and Cindy Bennett
Adi Benning
Deborah Berkley
Kathleen and Bill Bethel
Carol Bishop
Peter Bleasby
Betsy Bolding
Carla and Charles Borkan
Ellen Brackman and Deborah Randolph
Jonathan and Carol Bradley
Diane and Donald Bristow
Sallee Britton
Suzanne and Don Brown
Sara Bruner and Jackie Miller
Virginia Garner and Paul Buckley
Vincent Calarco
Diana and Jay Caldwell
Michael Candela and Dr. Marsha Brooks-Candela
Jennifer and Michael Caplan
Patricia and Jon Carlson
Nancy Carouso
Jeannie Chen
Dr. Jay and Betty Citrin
Arlan and Jeff Colton-Ramos
Jan Copeland
Cami and Les Cotton
Gloria and Phil Cowen
Judy Crosby
James Cummins
Douglas Curraut
Debra Ward and Mark Dalton
Pennie DeHoff and Larry Wurst
Raul Delgado
Lawrence C. Dennis
Stephen and Ruth Dickstein
Dr. Robert Dixon
Anna Don Belton
Jacques Dumont
Barbara and Gerald Ehrlich
Sandy and Karl Elers
Lee and Spencer Elliot
Mary and John Enemark
Gordon Stuart Ewy
Karen and Lionel Faitelson

Nancy Fintzy
Mary Jo Fitzgerald
Jan Olav and Lucille Flaaten
Kit Fogel
Sherman and Sarilyn Fogel
Gary Gephart
Janet Gerdes
Ami and John Giardina
Miriam and Richard Glabman
Barbara and Gerald Goldberg
Ann H. Goldberg
Mary Goldstein
Gail Adams and Jay Goodfarb
Paulette and Joe Gootter
Dr. Robert W. Gore
Vicki Gotkin and Edward French
Susan Grana
Michael J. Grassinger
Ruth and Thomas Gribb
Pam Grissom
Jennifer Gross
Anita and Jerome Gutkin
Drs. Lynnell Gardner and Michael Hamant
Douglas Hawke
Ruth Murphy and John Hay
Candy and Jeffrey Hazen
James Hazlewood
Pauline and Gene Hechler
Heid Family Charitable Fund
Mary Herman
James Herzfeld
Marcia and Gregory Hilliard
Marta and Robert Holl
Gerri and Barry Holt
Dr. H. Barry and Mrs. Lucy V. Holt
Jennifer Hutchison
Marsha and David Irwin
William Jacobs
Thomas Jensen
Shirley and Richard Johnson
Joanne and Chris Johnston
Anita and William Jones
Nathan Joseph
Marilyn Joyce
Rod Kaats
Robin and Michael Kaiserman
Toni Kane
Louise and Joseph Keane
Martha and George Kellner
Carolyn Kinney
Barbara and Jay Kittle
Stacy and Adam Klein



INDIVIDUAL DONORS

Donations made in the last 365 days, list pulled 01/07/2026

Suzan-Oda and Bill Knese
 Karen and Sherwin Koopmans
 Noreen Geyer-Kordosky
 and Gary Kordosky
 Michael Kramer
 Lynne Lagarde and Bob Stankus
 Sally Lanyon and Paul Hawkins
 Joan Le Fevre
 Ellen and Philip Leavitt
 Dr. Alan Levenson and
 Rachael K. Goldwyn
 Joel B. Levin
 Marcia Lindley
 Patricia Anne Lowell
 Martha Lyons
 Jo Ann and Matthew Madonna
 Kit and Joan Marrs
 Shirley and Stanley Matlick
 Ann and George Mavko
 Felicia and Warren May
 Almeda and Theodore Maynard
 Lauri McCannless
 James and Laura Sullivan
 Kevin McHenry
 Mr. and Mrs. George Mink
 The Greenleaf/Molberg
 Family Fund

Martha Moses
 Debbie and Michael Moynihan
 Peggy and Timothy Mulcahy
 Alice and Edward Neuwirth
 Ben Norton
 Jones Osborn and
 Stephanie Mullins
 Susan and Chuck Ott
 Esther M. Pasalis
 Alyce Pennington
 Sheila Peress and John Velez
 Dr. Andrew Perkins and
 Dr. Tony Colella
 Carol Pierce, M.D.
 Beverly Pinaire
 Emily Rosenberg Pollock
 Julia Price
 Carole and Ronald Rezetko
 Sydney Rice
 Valerie and Herschel Richter
 Kathy and Jack Rife
 Robin and Terence Roche
 Alice and Bill Roe
 William and Eileen Roeske
 Susan Rogers
 Renee Romano and
 Robert Sherwood

Quinta and Philip Rosenberg
 Shirley and Thom Rossa
 Sandra Rutherford
 Donna and Darrell Sabers
 Judy and Michael Schaffert
 Bart and Marcella Schanep
 Eric Scharf and Elizabeth Wheat
 Mary Ann Schlacks
 Sally and Robert Schleu
 Patricia and Harry Schlosser
 Lynna Schoon
 Al and Pinky Schuele
 Elizabeth Schulman
 Dr. Howard and Trudy Schwartz
 Polly and Joe Seeger
 Jeannette Segel
 F. William Sheppard and
 Range P. Shaw
 Patricia and Mark Smallsreed
 Teresa Smith
 Glenn Smith
 Linda Jensen Snyder and
 Richard Snyder
 Barbara Soehnlén
 Zachary Sparrow
 Rica Spivack
 Connie Stapleton

David Steele
 Claire Steigerwald
 Helen and Darryl Stern
 Jill and Daniel Stevenson
 Rita and Thomas Storm
 Barbara Straub
 Jeanne and Michael Sturgis
 John Szafranski
 Hugh and Allyn Thompson
 Gayle A. Traver
 Karen and Monty Turner
 Catherine and Bruce Uhl
 Margaret Norem and
 Rick Unklesbay
 Ellen and David Vellanga
 Riki and Gary Waugh
 Janice Wezelman and
 David Bartlett
 Nancy and Peter White
 Mary and John Wilber
 Lesley Wood
 Gladys and J. Wallace
 Wortham, Jr.
 Karen Yanes
 Edwin Zimmermann
 Cathy and Donald Zipperian
 Kaaren Zvonik



Join others in ensuring that ATC continues to play a vital role in the cultural vibrancy of our community ...
 engaging and inspiring thousands of students, employing professional theatre artists, and providing abundant
 outreach programs across the state.

Any amount makes an IMPACT ...
DONATE TODAY
 atc.org/donate or call 480-529-8251.





INDIVIDUAL DONORS

Donations made in the last 365 days, list pulled 01/07/2026

GIFTS IN HONOR OF

Matt August by Kenneth Goldman

Bill Bethel by Deborah North

Betsy Bolding by Kathleen and Bill Bethel

Kent Conrad by Anne Warner

Mary Ann and Darryl Dobras by Ben Norton

Pat Engels by Catherine A. Kelly, Barbara Molotsky, Mary Goldstein, and Deborah Kelly

Shirley Estes by Kelly Estes

Hugh Hallman by Suzanne and Steve Hilton

Michael and Beth Kasser by Carolee and Daniel Asia

Meron Kidane by Naomi Toux-Kidane

Michael O'Connor by Vanessa Kisicki

Gretchen Pace by Ann Roseman and Bob Huhn

Vivian Peterson by Serani Wijesinghe

Bitty Rosenberg by Katya Peterson

Wendy Saunders by Anonymous

Erica Stutman by Jonathan and Randi Brodsky and Janel and Eric Ullman

Syliva by Charlotte Crawford

Tina Waddington by Deborah Berkley

GIFTS IN MEMORY OF

Lee Barker by Rachel Barker

Irv Berger by Barbara Berger

Angus E. Burke by Pamela and Dennis Winsten

June J.C. Caldwell Martin by Diana and Jay Caldwell

Nicholas Candela by Michael Candela and Dr. Marsha Brooks-Candela

Frank Davis by Bill Sheppard and Range Shaw

Jon Doukas by Bill Sheppard and Range Shaw

Kate Flasch by Frank Flasch

Jay Glaser by Jeannine and Jim Grayson and Stefanie Cargill

Dennis Jones by Karen D. Jones

Hy Kaplan by Susan Vardon

Peggy Kellner by Martha Gish

John Kingsbury by Martha Gish

Che Morado by Adriana Morado

Hans Moser by Donna Moser

Larry Smith by Bill Sheppard and Range Shaw

Vera L. Smith by Prof. Todd Smith

Richard Stahl by Bill Sheppard and Range Shaw

Laura T. Sullivan by Deborah and Eric Haeseleer, Patrick, Kris, Neal, and Nora McGinnis

COMMUNITY SUPPORT

Cultural Arts Network

AARP Arizona

Tucson Jazz Festival

Bookmans

onenent

Phoenix Pride

Desert Voices

Reveille Mens Chorus

Loving Library

Athletico Physical Therapy

Southern Arizona

AIDS Foundation

Brick Road Coffee

Bra Spa

African American Museum of Southern Arizona

Big Brothers Big Sisters of Central Arizona

Opera Guild of Southern Arizona

Southwest Autism Research & Resource Center

Valors Veterans

Arizonans for Children

Harvest Compassion Center

Young & Empowered Women

ASU Office for Veteran and Military Academic Engagement

The Drawing Studio

Rio Salado Community College SRP

Ronald McDonald House Charities

Arizona Frontline Theatre

First Place

Downtown Tempe Authority

Ballet Tucson

University of Maryland Global Campus

The Aunt Rita's Foundation

Silent Survivor Project

St. Vincent de Paul

Artlink

LAND ACKNOWLEDGMENT STATEMENT

Arizona Theatre Company recognizes the rich history of the 22 American Indian communities in Arizona.

It is important to understand the cultural history of the land and our place within that history.

We invite you to learn more by visiting local cultural sites like the Heard Museum: heard.org or the Amerind Museum: amerind.org, among others.



INDIVIDUAL DONORS

LEGACY SOCIETY

Honors those friends of ATC who have established a gift through a bequest, trust arrangement, or other estate plan provision.

Anonymous
Jessica L. Andrews and Timothy W. Toothman
Cameron and Mary Artigue
Char and Alan Augenstein
Bill and Kathy Kinney
Nathaniel and Suzanne Bloomfield
James and Karin Blute
Karin and James Blute
Betsy Bolding
Thomas Chapman
Jacklyn Conroy and William Maguire
Len* and Doris Coris

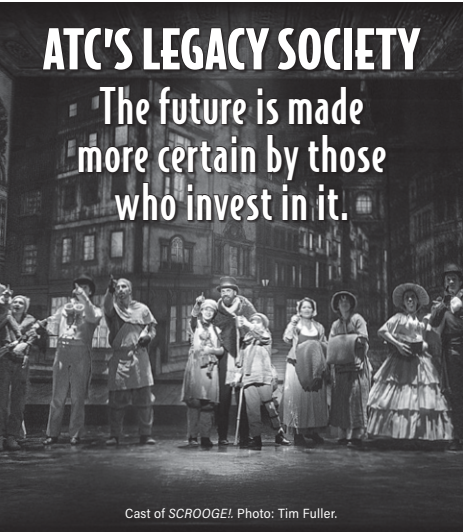
Judith Cosentino*
Patricia Engels and Dick Medland
Bob and Nancy Eschrich
Carol Fink
Michael O. Flatt*
Ted and Barb Frohling
Harry and Lois Garrett
Dr. Mary Jo Ghory
Steven Cohen* and Michael Godnick
Mr. Terrance M. Hanson
Mr. and Mrs. Edward J. Harrison
The Estate of Douglas S. Holsclaw, Jr.*
Andrew F. Holtz

Jacqueline Hufford-Jensen and Gregory Kroening
Ms. Tana Jones
I. Michael and Beth Kasser
Dorothy Moor*
Joan A. Morris
Peggy and Gerry* Murphy
Jerry Neuman
Don* and Peg Nickerson
Stacey Parker
Martha and Terry Allen Perl
Endowment for the Arts
Richard P. Stahl*
Ronald Robinette and Sharon Roediger

Arnold and Carol Rudoff
Rick Schoen*
William C* and Deborah Chisholm Scott
Enid and Michael Seiden
F. William Sheppard
Daniel J. and Evelyn G. Simon
The Estate of Dr. Philip C. Keller*
Elizabeth Marie Sprenkle*
Robert* and Shoshana Tancer
Marlene Tompkins and Jim Pyne
Roy Van Note
Mark and Taryn Westergaard
Maggie White
Richard H.* and Linda Whitney

* deceased

ATC'S LEGACY SOCIETY
The future is made more certain by those who invest in it.



Cast of SCROOGE!. Photo: Tim Fuller.

ATC's Legacy Society was established to recognize individuals who have made a planned gift to ensure the Company's vision lives on well into the future.

Whether you contribute through a bequest in a will or trust, or a beneficiary designation on your retirement account, life insurance, or other estate-planning vehicle, your legacy gift ensures that ATC continues to bring world-class theatrical productions to our stages, reaching generations for years to come.

LEGACY SOCIETY BENEFITS:

- Recognition in the ATC program book for the entire season.
- Exclusive updates from our Artistic department throughout the season.
- Exclusive invitation to our annual Legacy Society event.



To join the Legacy Society, or to learn more about ATC's planned giving program, please contact **Cami Cotton** at ccotton@atc.org or **520-463-7675**.



Tempe Center for the Arts

TCA SERVICES & FACILITIES

THEATER INFORMATION

Opened in 2007, Tempe Center for the Arts houses a state-of-the-art, 600-seat proscenium theater, a 200-seat studio theater and a 3,500-square-foot gallery. The following services and policies ensure your comfort and enhance your experience at the theater.

THEATRE POLICIES

Latecomers – Latecomers will be seated only at an appropriate and predetermined break in action. In order not to disturb patrons who are already enjoying the performance, latecomers may be seated in alternate locations until intermission.

Cameras – As a courtesy to our patrons and the actors, the use of cameras and recording devices is not permitted within the theater during the show.

Cellphones, Smart Watches & Light/Sound-emitting Devices – Please silence or turn off all cellphones, digital watches, or any other noise-making or light-emitting devices for the courtesy of other patrons and the actors.

Children – Children under 5 are not permitted in the theater during performances.

Smoking – Smoking is strictly forbidden in City of Tempe facilities. Receptacles are located outside the main entrance.

THEATER SERVICES

Accessibility – Tempe Center for the Arts provides a variety of accessible services in the lobby and accommodations including, but not limited to:

- Accessible parking
- Accessible/family restrooms
- Listening devices – Available on request in the lobby
- Accessible seating available on all levels
- Seating assistance – Please contact a TCA Experience Team member

Elevators – Elevators are located on the west end of the lobby and serve all three patron levels.

Restrooms – Restrooms are located on the first and second levels and are accessible to patrons with disabilities.

Eat & Drink – Food and beverages are available in the lounge through intermission. Please use trash and recycling receptacles at all entrances.

Lost & Found – For assistance, see an Experience Team member or call 480-350-2883 the following day.

Captioning – Coordinated with the action on-stage, those in open-captioned seating will be able to read the play’s dialogue displayed large letters on an LED screen. For open-captioned performance dates, contact the ATC Ticket and Information Office at 833-ATC-SEAT.

700 W. RIO SALADO PARKWAY TEMPE, AZ 85281
480.350.2822 | TEMPECENTERFORTHEARTS.COM



**Welcome to
the home of
Arizona Theatre
Company**



EXPERIENCE TCA
Art. Music. Dance. Theatre.

tca

**something
for
everyone**



**SEE
WHAT'S
COMING**

480-350-2822
tempecenterforthearts.com



Tempe Center for the Arts

**come early
and see free
gallery
exhibitions,
enjoy drinks
in the lounge,
and visit the
rooftop
terrace.**

Matt August
Kasser Family Artistic Director

Ana Rose O'Halloran
Executive Director

ARTISTIC & PRODUCTION

ASSOCIATE PRODUCER
Matthew Wiener

PLAYWRIGHT-IN-RESIDENCE
Elaine Romero

2025/2026 RESIDENT ARTIST
Daniel Perelstein Jaquette

PRODUCTION MANAGER
Jamie S. Lara

ASSOCIATE PRODUCTION MANAGER
Sheldon Lane

ASSISTANT PRODUCTION MANAGER
Emma Prange

SCENERY

TECHNICAL DIRECTOR
Arthur Potts

ASSISTANT TECHNICAL DIRECTOR
Jared Strickland

LEAD CARPENTER
John Crain

CARPENTERS
Cory Walters
Jim Clark

PAINTS

CHARGE SCENIC ARTIST
Sammie Nickel

ASSISTANT CHARGE SCENIC ARTIST
Danielle Pecchioli

PROPERTIES

PROPERTIES SUPERVISOR
Faith Boucher

PROPERTIES CARPENTER
Taylor Telford

COSTUMES & WARDROBE

COSTUME DIRECTOR
Shelly Williams

ASSISTANT COSTUME DESIGNER
Lindsay McDonald

LEAD DRAPER
Phyllis Davies

STITCHER
Jazmin Fuentes

WIG & MAKE-UP SUPERVISOR
Becca McCullough

COSTUME CRAFTS ARTISAN
Sandahl Tremel

TUCSON WARDROBE SUPERVISOR
Sarah Willwater

TEMPE/PHOENIX WARDROBE SUPERVISOR
Cameo Gustafson

ELECTRICS & PROJECTIONS

LIGHTING & PROJECTIONS SUPERVISOR
Tiffer Hill

LEAD ELECTRICIAN
Allison Gammons

STAFF ELECTRICIAN
Ryan Darland

TEMPE/ PHOENIX LIGHT BOARD OPERATOR
Theodore McEntire

SOUND

SOUND SUPERVISOR
Mathew DeVore

TUCSON SOUND ENGINEER
Alexis Glas

TEMPE/PHOENIX SOUND ENGINEER
Wade Yorke

STAGE MANAGEMENT

PRODUCTION ASSISTANTS
Savannah Gersdorf
Latrel Thompson

ADMINISTRATION

CHIEF OF STAFF
Charlene Vasquez

DIRECTOR OF OPERATIONS AND EVENTS
Nick Cianciotto

COMPANY MANAGER
Cat Tries

DEVELOPMENT & MARKETING

DIRECTOR OF DEVELOPMENT - TUCSON
Cami Cotton

DIRECTOR OF DEVELOPMENT - PHOENIX
Reese Shughart

DIRECTOR OF ANNUAL FUND AND STEWARDSHIP
Carley Elizabeth Preston

DIRECTOR OF GRANTS AND FOUNDATION RELATIONS
Gretchen Pace

DIRECTOR OF MARKETING
Bitty Rosenberg

MARKETING MANAGER
Nicholas Kuhn

CREATIVE AND BRAND MANAGER
Richard Giuliani

DIGITAL STORYTELLER & PUBLIC RELATIONS MANAGER
Marina Nelson

COMMUNITY ENGAGEMENT MANAGER
Ethan Hoover

FINANCE

CHIEF FINANCIAL OFFICER
Mark Kochman

SENIOR ACCOUNTANT
Nancy Kilmer

ACCOUNTING COORDINATOR
Patricia Walter

BOX OFFICE & HOUSE MANAGEMENT

DIRECTOR OF PATRON SERVICES
Juliet Martin

ASSISTANT DIRECTOR OF PATRON SERVICES
Linda Schwartz

PATRON SERVICES MANAGER
Richard Ragsdale

ASSISTANT BOX OFFICE MANAGERS
Carrie Luker
Keith LaSpaluto

PATRON SERVICES ASSOCIATES
Katelin Andrews
Xia Monet
Sarah Smiley
Gadja Samie

PATRON SERVICES ASSISTANTS
Wendy Sander
Crystal McCue

HOUSE MANAGER
Bill Bethel

FACILITIES

FACILITIES MANAGER
Horace Ashley

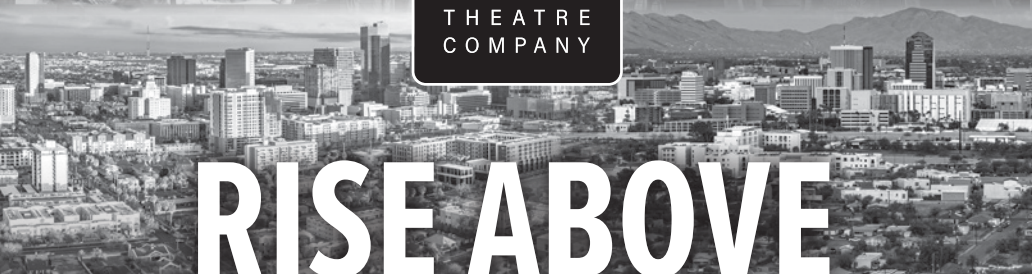
MAINTENANCE SUPERVISOR
Dean Morgan

MAINTENANCE TECHNICIANS
Jonathan Cook
Angelo Alexander

BAR STAFF
Xia Monet
Zoe Soleil
Fran Greer
Heather Glenn
Colin Grogan



atc
ARIZONA
THEATRE
COMPANY



RISE ABOVE

The Arts are an essential part of a thriving community. Now, with funding cuts and rising costs, organizations like Arizona Theatre Company depend on the passion and generosity of donors like **YOU**.

Ticket sales cover only **45%** of what is needed to bring these stories to life.

Join ATC's Board of Trustees in their **RISE ABOVE** fundraising campaign.

More than a fundraiser, **RISE ABOVE** is a commitment to professional live theatre's future and robust cultural landscape.

GIVE NOW and YOUR gift will be matched!

For a limited time, every \$2 in new or increased donations, the Connie Hillman Family Foundation will contribute \$1.

Any amount makes an **IMPACT ...**
DONATE TODAY



atc.org/donate

04/11/26 - 04/26/26

THEY'RE NOTHING ALIKE ... UNTIL THEY ARE.

The Roommate



atc
ARIZONA
THEATRE
COMPANY

BY JEN SILVERMAN
DIRECTED BY MARSHA MASON

Humor.
Friendship.
Reinvention.

An empty-nesting Midwestern woman takes in a mysterious East Coast lodger, igniting an unexpected, hilarious journey of reinvention, risk, and second chances. Straight off Broadway, *The Roommate* is a wickedly funny, deeply moving story of self-discovery reminiscent of *The Odd Couple* and *Grace and Frankie*.



Four-time Oscar-nominated actress and veteran director Marsha Mason, who was Associate Director of the Broadway production starring Patti LuPone and Mia Farrow, returns to ATC to direct (she previously directed ATC's *Chapter Two* and *An Act of God*).

ATC.ORG / 833-ATC-SEAT

ATC AT TEMPE CENTER FOR THE ARTS 700 W. RIO SALADO PKWY, TEMPE



Scan QR Code
for more details
or visit **atc.org**



ABOUT ATC



Recognized as the Official State Theatre of Arizona with a legacy started in 1966, ATC has an unwavering commitment to delivering exceptional theatrical experiences to the communities of Tucson and Phoenix. As the sole LORT (League of Resident Theatres) professional nonprofit regional theatre in Arizona, ATC proudly sets the gold standard for artistic excellence and innovation.

ATC is led by Kasser Family Artistic Director Matt August and Executive Director Ana Rose O'Halloran. Each season, ATC employs world-class artists to produce professional theatre, reaching an audience of over 130,000 patrons through mainstage productions, student matinees, and community outreach.

MISSION

Arizona Theatre Company's mission is to create world-class theatre about what it means to be alive today - inspiring curiosity and creativity, sparking empathy and joy - bringing all Arizonans together.

VISION

Arizona Theatre Company's vision is to transform the lives of every Arizonan through the power of theatre.

ATC supports its vital mission with these key initiatives:

ATC Mainstage

Each season, ATC produces five mainstage productions, bringing together the best talent from across Arizona, the country, and the world. ATC

playwrights, directors, designers, actors, and production teams represent the finest artists and technicians working today.

Engagement in Phoenix and Tucson ... and Beyond

ATC operates in two major cities, unlike any other LORT theatre in the country, providing a place for communities across Arizona to gather, share, and explore the art-making process, reaching beyond the metropolitan areas of Tucson and Phoenix, enriching the theatre learning experience for all.

New Play Development

ATC provides playwrights and theater makers, both locally and nationally, a place to develop their work. Through workshops and readings, we give artists a place to incubate and launch productions, both at ATC and beyond. ATC is also proud to support emerging voices with the annual National Latine Playwrights Award and Festival.

Education and Outreach

ATC delivers inspiring experiences in a number of ways, both connected to our stage and beyond our walls, in schools, and across the state. Core programs of our education efforts include Student Matinees, playguides, and post-show discussions.

Living Our Values (LOV) Initiative

We strive to put our values at the center of who we are and what we do - continuously connecting our audiences, artists, staff, and stakeholders to our core values, creating a true sense of belonging, equity, and diversity within the organization and the communities we serve. Nowhere is this more important than the work we build and perform on our stages.

05/23/26 – 06/07/26

"The lovechild of Mel Brooks and Monty Python, a side-splitting, rib-tickling, neck-biting, hysterically racy show. You'll be screaming with laughter."

- BroadwayWorld

DRACULA

A COMEDY OF TERRORS



atc
ARIZONA
THEATRE
COMPANY

BY GORDON GREENBERG AND STEVE ROSEN
DIRECTED BY GORDON GREENBERG

Blood-curdling. Zany. Reimagined.

Bram Stoker's legendary vampire gets a side-splitting makeover in this fast-paced, madcap reimagining of Dracula. Five actors take on dozens of roles in a whirlwind of quick wit and quick changes. Part Mel Brooks, part Monty Python, and completely outrageous, *Dracula: A Comedy of Terrors* is a crazy spin on the classic horror tale that will have you howling with laughter. Perfect for audiences of all blood types.

"Unashamedly laugh-out-loud funny. The double standing ovation at this performance was indeed well-deserved. Book a ticket now and enjoy!"

- ARTSHUB UK

ATC.ORG / 833-ATC-SEAT

ATC AT TEMPE CENTER FOR THE ARTS 700 W. RIO SALADO PKWY, TEMPE



Scan QR Code
for more details
or visit atc.org

Join Us Center Stage with ATC Production Sponsorships

At Arizona Theatre Company, we're proud to offer sponsorship opportunities designed to meet your individual or organization's unique goals.



Why Partner with ATC?

- **Drive the Economy:** Live theatre fuels jobs, local businesses, and unforgettable experiences that attract audiences.
- **Inspire the Next Generation:** Sponsorship supports student matinees that cultivate future theatre-goers and creators.
- **Enhance your Corporate Social Responsibility:** Align your brand with education, inclusion, and economic growth through the arts.
- **Champion Live Theatre:** Show your commitment to the arts' power to enrich communities.
- **Reach Thousands:** Connect with diverse, engaged audiences across Arizona, including decision-makers and community leaders.



Contact: Reese Shughart, Director of Development, 480-529-8251