



# ARIZONA THEATRE COMPANY 2023/2024 IMPACT REPORT



**THE OFFICIAL STATE THEATRE OF ARIZONA**

# ATC BOARD OF TRUSTEES 2023/2024

## BOARD OFFICERS

Pat Engels, Chair  
Kay Oliver, Secretary  
Adam Michael, Treasurer

## BOARD OF TRUSTEES

Beverly Arrington  
Char Augenstein  
Matt August  
Kasser Family Artistic Director  
Brian Boylan  
Michael Bradford  
Phil Cowen  
Deanna Evenchik-Brav  
Joanie Flatt  
Hugh Hallman  
Nora Hannah  
Stephen Heitz

Gary Jackson  
Brian Jorgensen  
Debra Larson  
Michael O'Connor  
Analise Ortiz  
Mary Beth Radke  
Don Riegger  
Joan Sherwood  
Erica Stutman  
Karen Wohlgemuth  
Geri Wright  
Executive Director

## EMERITUS TRUSTEES

Jessica L. Andrews  
Managing Director Emeritus  
Paul Baker  
Katie Dusenberry  
Lynne Wood Dusenberry  
Darryl Dobras  
Shirley Estes  
David Ira Goldstein  
Artistic Director Emeritus  
I. Michael Kasser  
Dr. John Schaefer  
F. William Sheppard

# ATC STAFF 2023/2024

**Geri Wright**  
Executive Director

**Matt August**  
Kasser Family Artistic Director

## ARTISTIC & PRODUCTION

### ASSOCIATE PRODUCER

Matthew Wiener

### PLAYWRIGHT-IN-RESIDENCE

Elaine Romero

### PRODUCTION MANAGER

Jamie S. Lara

### ASSOCIATE

### PRODUCTION MANAGER

Sheldon Lane

### PRODUCTION OFFICE ASSISTANT

Emma Prange

### STAGE MANAGEMENT

### ASSISTANT STAGE MANAGER

MyKel Hall

### STAGE MANAGER APPRENTICE

Jess O'Connor

### SCENERY

#### TECHNICAL DIRECTOR

Arthur Potts

#### ASSISTANT TECHNICAL DIRECTOR

Jared Strickland

#### LEAD CARPENTER

John Crain

#### CARPENTERS

Larry McDonald

Cory Walters

### PAINTS

#### CHARGE SCENIC ARTIST

Charlotte Alcorn

#### ASSISTANT CHARGE

SCENIC ARTIST

Sammie Nickel

### PROPERTIES

#### PROPERTIES SUPERVISOR

Faith Boucher

#### PROPERTIES ARTISAN

Aidyn Corkell

### COSTUMES & WARDROBE

#### COSTUME DIRECTOR

Shelly Williams

#### ASSISTANT COSTUME DIRECTOR

Sandahl Tremel

#### ASSISTANT COSTUME DESIGNER

Lindsay McDonald

#### DRAPER

Phyllis Davies

#### JUNIOR DRAPER

Caitlin Fanning

### WIG & MAKEUP SUPERVISOR

Maggie Clark

### WARDROBE SUPERVISOR

Jacob Miller

### TEMPE/PHOENIX

### WARDROBE SUPERVISOR

Afton Hensley

### ELECTRICS & PROJECTIONS

#### LIGHTING & PROJECTIONS SUPERVISOR

Tiffer Hill

#### LEAD ELECTRICIAN

Allison Gammons

#### STAFF ELECTRICIAN

Alexis Glas

#### TEMPE/PHOENIX

#### LIGHT BOARD OPERATOR

Wade Yorke

### SOUND

#### SOUND SUPERVISOR

Mathew DeVore

#### PRODUCTION SOUND ENGINEER

Brianna Moore

#### TEMPE/PHOENIX

#### SOUND ENGINEER

Sophia Rodriguez

### STAGE CREW

#### TEMPE/PHOENIX CREW LEAD

Tanner Gurule

## ADMINISTRATION

### GENERAL MANAGER

Julie Fancher

### CHIEF OF STAFF

Charlene Vasquez

### DIRECTOR OF OPERATIONS AND EVENTS

Nick Cianciotto

### COMPANY MANAGER

Cat Tries

### ASSOCIATE COMPANY MANAGER / EDUCATION OUTREACH

Mary-Jo Okawa

### DEVELOPMENT & MARKETING

#### CHIEF DEVELOPMENT

#### AND MARKETING OFFICER

Paula Taylor

### DIRECTOR OF ANNUAL FUND AND STEWARDSHIP

Carley Elizabeth Preston

### DIRECTOR OF DONOR RELATIONS - TUCSON

Cami Cotton

### DIRECTOR OF DONOR RELATIONS - PHOENIX

Debbie Hickey

### GRANTS MANAGER

Gretchen Pace

### DIRECTOR OF MARKETING

Bitty Rosenberg

### CREATIVE AND BRAND MANAGER

Richard Giuliani

### MARKETING OUTREACH COORDINATOR

Ethan Hoover

### DIGITAL STORYTELLER & PUBLIC RELATIONS MANAGER

Marina Nelson

### DIGITAL MARKETING COORDINATOR

Nicholas Kuhn

### FINANCE

#### CHIEF FINANCIAL OFFICER

Mark Kochman

#### SENIOR ACCOUNTANT

Nancy Kilmer

#### ACCOUNTING COORDINATOR

Patricia Walter

### BOX OFFICE & HOUSE MANAGEMENT

#### DIRECTOR OF PATRON SERVICES

Juliet Martin

#### ASSISTANT DIRECTOR OF PATRON SERVICES

Linda Schwartz

#### PATRON SERVICES MANAGER

Richard Ragsdale

#### ASSISTANT BOX OFFICE MANAGERS

Carrie Luker

Keith LaSpaluto

#### PATRON SERVICES ASSOCIATES

Katelin Andrews

Sophia Nagore

Sarah Smiley

Gadيجا Samie

Wendy Sander

### HOUSE MANAGER

Bill Bethel

### FACILITIES

#### FACILITIES MANAGER

Horace Ashley

#### MAINTENANCE SUPERVISOR

Dean Morgan

#### FACILITIES STAFF

Jesus Francies

Derrick Herrera

#### BAR STAFF

Xia Monet

Caitlin Pepe

Zoe Soleil

Fran Greer

# Company Overview

A vibrant nonprofit since 1966 and the Official State Theatre of Arizona, Arizona Theatre Company (ATC) sets the gold standard for artistic excellence and innovation. As Arizona's sole LORT (League of Resident Theatres) professional nonprofit regional theatre, ATC is a beacon of cultural enrichment and theatrical prowess. Guided by the visionary leadership of Executive Director Geri Wright and Kasser Family Artistic Director Matt August, ATC consistently assembles a team of world-class artists dedicated to delivering exceptional theatrical experiences to the communities of Tucson and the Tempe/Phoenix metropolitan area.

ATC's impact extends far beyond the stage, enhancing residents' overall quality of life. With a steadfast commitment to outreach, education, and community engagement, ATC annually reaches more than 300,000 patrons through mainstage productions, student matinees, and community initiatives. We believe in the transformative power of art. As a community pillar, ATC endeavors to invest and engage with our local communities.

Moreover, ATC serves as a significant economic driver, bolstering Arizona's economy by stimulating housing markets, generating employment opportunities, and boosting revenue for local businesses. According to a study by the Downtown Tempe Authority, as the largest tenant and new partner at Tempe Center for the Arts, ATC has increased foot traffic by over 200% this year, invigorating the local economy while offering new cultural experiences for residents and tourists alike. Similarly, as stewards of the Temple of Music and Art, ATC draws thousands of patrons from across the city, providing vibrancy and enriching the cultural landscape in Tucson.



## TUCSON

P.O. Box 1631, Tucson, AZ  
85702-1631

**Performance Venue**  
Temple of Music and Art  
330 S. Scott Avenue



## PHOENIX / TEMPE

P.O. Box 61893, Phoenix, AZ  
85082-1893

**Performance Venue**  
Tempe Center For the Arts  
700 W. Rio Salado Pkwy

**833-ATC-SEAT / ATC.ORG**

# From the Board Chair



The 2023/2024 Season was Arizona Theatre Company's 56th anniversary, and it will be remembered as a year of exciting changes and remarkable growth. Under the creative visionary leadership of Kasser Family Artistic Director Matt August, during his first full season, we embarked on an inspiring journey.

Our move to the Tempe Center for the Arts, led by our Executive Director Geri Wright, marked a significant milestone. This new home has provided a stunning venue for our productions and deepened our connection with the

vibrant Tempe and East Valley communities. The enthusiasm and support we've received have been truly heartwarming.

Arizona Theatre Company produced five mainstage shows in its 2023/2024 Season, including its very first big holiday musical, *Scrooge!* It was a joy

to see so many families coming together to enjoy our performances in Tucson and Tempe. Each title in our season was meticulously crafted in our production shop.

Our patron base grew alongside our community partnerships as we showcased our new home at Tempe Center for the Arts and fostered our incredible legacy at the Temple of Music and Art. This season has been a testament to the power of the arts to bring people together and create lasting memories.

Here's to a year of innovation, community, and the transformative magic of theatre.



Pat Engels  
Board Chair, ATC

[boardchair@atc.org](mailto:boardchair@atc.org)

# From the Kasser Family Artistic Director



This season, we celebrated not only the art of theatre but also our local artists and the power of diversity on our stage. ATC hired more local artists this last season than the previous two seasons combined, and more BIPOC artists than in each of the previous seasons since the pandemic. A highlight was the 26th National Latine Playwrights Award turned into a FESTIVAL, shining a brighter spotlight on the brilliant voices that enrich our region and country. This initiative underscores our commitment to amplifying underrepresented stories,

and we are excited to continue nurturing these vital perspectives both in this development pipeline and on our mainstage with shows like *Intimate Apparel* and *Blues in the Night*.

We built partnerships with Arizona State University and Arizona Opera and deepened our relationship with University of Arizona. In collaboration with ASU, we had seven student interns working on our two-week workshop of the new musical *My Man Godfrey*, where they each worked with three Broadway creatives, two of whom are Tony winners. We also engaged ASU's

leading Latinx theatre scholar to direct the NLPA-winning play reading. We hope to grow the NLPA Festival and continue to build a more family, and Phoenix/Tempe-based audience.

Looking ahead, we are leaning into our commitment to local artists by engaging Tucson actor Aaron Cammack as our 2024/2025 Season Resident Artist. You will recognize him from both *Intimate Apparel* and *Scrooge!* last season. Not only will he continue playing on our stages in three of the upcoming shows, but he will deepen ATC's engagement with the community by offering workshops and community outreach on behalf of ATC.

Thank you for being an integral part of our journey. Your support has made this season a resounding success, and I look forward to what we will achieve together in the coming year.



Matt August  
Kasser Family Artistic Director, ATC

[maugust@atc.org](mailto:maugust@atc.org)

# From the Executive Director



It has been an exciting year at Arizona Theatre Company, with several successful firsts that brought more theatre-lovers back to our stages as well as many new audience members who we welcomed for the first time!

Season 56 marked the first season created by Kasser Family Artistic Director Matt August, and audiences responded enthusiastically to the quality, variety, and depth of our shows. *Scrooge!* brought generations of families together for a heartfelt holiday tradition and drew more first-time patrons to ATC

than we have seen for any show in the last five years. Overall, we saw a 14% increase in the number of patrons experiencing live theatre at ATC combined in Tucson and Tempe.

Speaking of Tempe, we had a tremendous first season at our new metropolitan Phoenix home at Tempe Center for the Arts. It was delightful to see more than 7,000 additional patrons attending shows in Tempe over the prior year. We heard many wonderful comments about the new venue including the ease of parking, beautiful facility, and overall experience. Our partnership with the City of Tempe continues to grow, and we were honored to receive the Downtown Tempe Authority 2024 Cultural Impact Award.

The 2023/2024 Season was filled with dozens of partnerships with organizations and companies in both communities, providing pathways to help

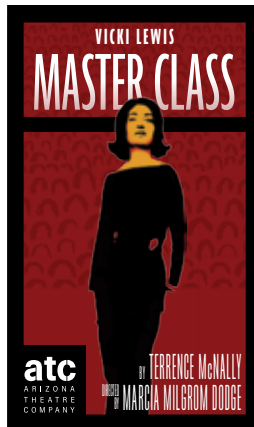
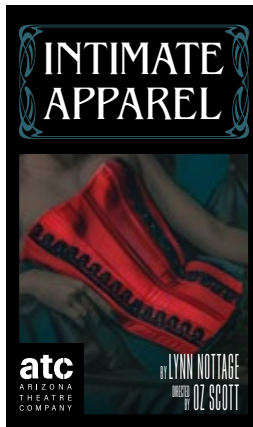
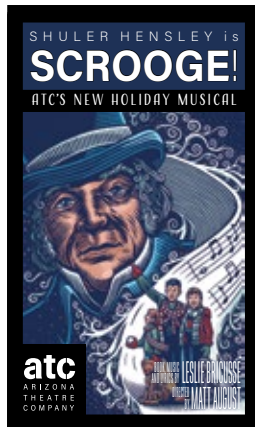
us reach new audiences and strengthen our ties in the communities we serve. Audiences in both cities responded strongly to our holiday book drives during *Scrooge!*, netting more than 550 books for Make Way for Books in Tucson and Loving Library in Phoenix to provide to youth in those communities.

As a nonprofit organization, it is our board of trustees who help set our direction and provides guidance and support to ensure Arizona Theatre Company is thriving as Arizona's State Theatre for the next 56 years and beyond. Their dedication to the mission and vision of ATC is crucial as we chart our course for success, and I am eternally grateful for their visionary leadership and their invaluable contributions made to ensure the growth and success of Arizona Theatre Company.

Critical to our success is you – as a donor, subscriber, theatre-lover, and ATC advocate! By sharing your passion for live theatre with friends and family and supporting Arizona Theatre Company, we can continue to enrich the lives of our audiences and communities well into the future.

Geri Wright  
Executive Director, ATC

[gwright@atc.org](mailto:gwright@atc.org)



# 2023/2024

# ATC - CELEBRATING A LONG LEGACY IN ARIZONA



## The 1960s The Beginning

Arizona Theatre Company is established as Arizona Civic Theatre in 1967 by Sandy Rosenthal and a group of civic and business leaders in Tucson with the intent to become a fully professional theatre. Performances take place in the basement of the Santa Rita Hotel.

The first four-show season opens with *Generations* in July 1967, directed by Founding Artistic Director Rosenthal. Total attendance for the season was 4,000, and the operating budget was \$8,000. In 1968, the newly formed Arizona Commission on the Arts and Humanities awards its first grant to the theatre. The 1968 production of Arthur Miller's *A View from the Bridge* features the Arizona Civic Theatre's first Equity actor, Antony Carbone, who performed in films and plays around the country.



## The 1970s A Decade of Growth

The company becomes fully professional, increasing the quality of everything from costumes to actors. It finds a new home at Tucson's newly built Leo Rich Theatre and takes its show *Vanities* on the road to Phoenix

for the first time. A name change and new managing director and artistic director set the stage for continued success.

After moving to a downtown Tucson building once occupied by the Salvation Army in 1970, the company makes the Leo Rich Theatre at the newly completed Tucson Community Center (now Tucson Convention Center) its home in 1972. The company's first grant from the National Endowment for the Arts helps hire Equity actors under a Guest Artist Contract. David Hawkanson is named ACT's managing director in 1976, and Rosenthal steps down as Mark Lamos becomes artistic director for a short stint. He goes on to make a name for himself as a director on Broadway and around the country. In 1979, the company changes its name to Arizona Theatre Company.



## The 1980s A Decade of Change

ATC experiences continuing change and promise as Artistic Director Gary Gisselman leads a full schedule of productions each season in both Phoenix and Tucson. The decade's

end sees the opening of Phoenix's Herberger Theater Center, a project in which ATC plays an instrumental role and that serves as ATC's Phoenix home for 32 years.

In 1983, ATC for the first time presents its full six-play season in Tucson and in two different Phoenix facilities: Phoenix College Theatre and the Scottsdale Center for the Performing Arts. The company is commended by President Reagan on behalf of the President's Committee on the Arts and Humanities on its unique two-city operation and designated a national model. The Herberger Theater Center breaks ground in 1986 and opens in 1989, heralding new growth potential for ATC in the Phoenix area.



## The 1990s Promise for the Future

ATC establishes its new Tucson home at the renovated Temple of Music and Art and settles in at Phoenix's Herberger Theater Center. The decade welcomes the company's longest-running Artistic Director, David Ira Goldstein, whose 26-year

tenure includes producing or directing more than 200 plays.

In 1990, the City of Tucson completes renovations on the Temple of Music and Art, a 1927 Spanish Colonial-style building saved from condemnation, for ATC's new Tucson home. Jessica Andrews is named managing director in 1995. The company announces it will produce one new play a year, and also begins a long relationship with playwright Steven Dietz with the world premiere of his adaptation of Bram Stoker's *Dracula*. ATC hosts London's The Royal National Theatre's production of *Othello* in Phoenix and *Hamlet* in 2001 starring Simon Russell Beale, one of England's bravest and greatest actors.

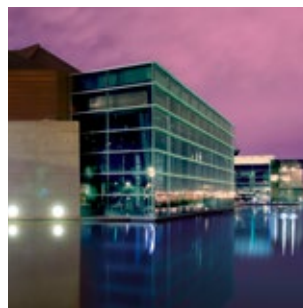
For more than 50 years, excellence has been at the heart of the mission of Arizona Theatre Company. As a cornerstone of the cultural life of our state, ATC has achieved prominence through the dedication and imagination of hundreds of artists, craftspeople, and supporting audiences in both Tucson and Phoenix.



## The 2000s Turn of the Century

Heading into the new century, ATC has produced more than 5,000 performances of nearly 200 plays, including many Tony Award and Pulitzer Prize winners. While the start of the decade sees growth, the recession requires the company to adapt with more co-promotions and smaller casts.

As part of its ongoing mission to serve as an educational resource for the community, ATC introduces over a quarter million young people to the magic of live professional theatre through its Student Matinee Program and established educational ties with the University of Arizona, Arizona State University, and Stephen F. Austin State University in Nacogdoches, Texas. ATC's 2009/2010 Season opens with an adaptation of Khaled Hosseini's *The Kite Runner*, which goes on to Broadway and national and international tours. Kevin Moore serves as managing director, and in 2009, Jessica Andrews retires after nearly 14 years with the company, returning as interim managing director in 2013.



## The 2020s the Future is Now

With an active Board and new leadership in place, excitement for the new decade is palpable. In early March 2020, ATC begins previews of a co-production with Milwaukee Repertory Theatre, *The Legend of Georgia McBride*. With many events planned and strong ticket sales, the show opens on March 13, 2020, the same day the theatre – along with the rest of the world – comes to a halt due to the spread of Covid-19.

With a reduced staff, ATC produces a digital season full of play workshops and readings while focusing on reimagining the organization's structure from top to bottom to ensure sustainability into the future. The company returns to the stages in Fall 2021 in its best position financially in well over a decade, with tireless support from the Board of Trustees. Matt August, a seasoned theatre professional who has more than 90 directorial projects under his belt, was named ATC's Kasser Family Artistic Director. In Fall 2023, ATC moves to its new Metropolitan Phoenix home at Tempe Center for the Arts for its 56th Season.



## The 2010s Celebrating 50 Years

ATC celebrates its 50th decade of professional theatre in Arizona with a variety of standout shows coproduced with an array of regional theatre companies including the Guthrie Theater, The Acting Company, San Jose Repertory Theater, Seattle Repertory Theatre, and Milwaukee Repertory Theatre.

Production quality remains high as the company experiences a variety of leadership changes and financial challenges. David Ira Goldstein retires in 2017, and David Ivers then Sean Daniels take the helm as artistic director. Billy Russo is named managing director in 2015 with a focus on ATC's next 50 years. Geri Wright is named managing director at the end of 2019.

## SEASON 57



2024 / 2025

# Economic Impact



The 2023/2024 Season brought about many exciting opportunities, with robust ticket sales and gifts of support from our amazing community. As you delve into this impact report, we trust that you'll appreciate the substantial economic influence of ATC and its enduring role as a cultural cornerstone for the state. ATC not only generates employment opportunities but also enhances the reputation of Tempe and Tucson as premier cultural tourism hotspots. ATC is a champion of education and fosters inclusivity for all to partake in and enjoy performances through its community outreach and education efforts. We're thrilled about the positive impact we're making!

According to Americans for the Arts, the arts contribute \$1.1 billion annually to Arizona's economy by generating revenue, supporting jobs, and attracting tourists.

## Letter From The Chief Development & Marketing Officer



What a year it has been! As you read through this Impact Report, I hope you gain insight into the critical role ATC plays – not only as the leading regional nonprofit theatre in the state but as the official State Theatre. Our investment in the communities we serve is profound. The level of theatre is unlike anything else you will find in the state. But

we don't stop there. Our robust education and community outreach positions ATC as a leader in the state, working toward our mission to bring all Arizonans together.

Despite the stagnation in giving across the United States and rising costs, ATC has managed to increase both the number of

our donors and our overall giving. This success is due to our dedicated staff, patrons, and Board. However, we recognize the need for continued growth, and I am confident we will achieve it with your continued support.

Best,

A handwritten signature in cursive that reads "Paula".

Paula Taylor  
Chief Marketing and Development Officer, ATC

[ptaylor@atc.org](mailto:ptaylor@atc.org)

# BAREFOOT IN THE PARK



**atc**  
ARIZONA  
THEATRE  
COMPANY

BY NEIL SIMON  
DIRECTED BY MICHAEL BERRESSE



**"(Simon) was hot-wired to be funny. Despite how the times have changed since 1965, his jokes still spark instant laughter."**

- Let the Show Begin



**41**  
PERFORMANCES

**23**  
TUCSON  
**18**  
PHOENIX

**3**  
STUDENT  
MATINEES

**12,010**  
ATTENDANCE

**7,028**  
TUCSON  
**4,982**  
TEMPE/PHOENIX



**TUCSON**  
**09/23/23 - 10/13/23**  
TEMPLE OF MUSIC AND ART

Season Sponsor  
**I. Michael & Beth Kasser**

**TEMPE/PHOENIX**  
**10/20/23 - 11/05/23**  
TEMPE CENTER FOR THE ARTS

Season Corporate Sponsor  
**LAVIDGE**

Tempe/Phoenix Corporate Sponsor  
**UnitedHealthcare**

Tempe/Phoenix Corporate Production Sponsor  
**SRP**

Tempe/Phoenix Production Support  
**Spencer Fane LLP**

SHULER HENSLEY is  
**SCROOGE!**  
 ATC'S NEW HOLIDAY MUSICAL



**atc**  
 ARIZONA  
 THEATRE  
 COMPANY



**“There’s a lot that’s impressive about this production, especially Tony-winning actor Shuler Hensley. His voice is gorgeous, his acting sublime, and he made the journey from miser to altruist smooth and believable.”**

*- Arizona Daily Star*



**49** PERFORMANCES  
**24** TUCSON  
**25** PHOENIX  
**3** STUDENT MATINEES  
**18,835** ATTENDANCE  
**9,749** TUCSON  
**9,086** PHOENIX



**TUCSON**  
 11/07/23 - 12/02/23  
 TEMPLE OF MUSIC AND ART

Season Sponsor  
**I. Michael & Beth Kasser**

**TEMPE/PHOENIX**  
 12/09/23 - 12/30/23  
 TEMPE CENTER FOR THE ARTS

Season Corporate Sponsor  
**LAVIDGE**

Tucson Individual Production Sponsor  
**Shirley Estes**

Tempe/Phoenix Production Support  
**Blue Cross Blue Shield of Arizona**

Tempe/Phoenix Production Support  
**Cantor Forensic Accounting, PLLC**

# INTIMATE APPAREL



**atc**  
ARIZONA  
THEATRE  
COMPANY

BY LYNN NOTTAGE  
DIRECTED BY OZ SCOTT

**“Nottage is a poetic writer and a powerful storyteller. ATC gives her play the production it deserves.”**

- Arizona Daily Star



**38**  
PERFORMANCES

**22**  
TUCSON  
**16**  
PHOENIX

**12,960**  
ATTENDANCE

**8,617**  
TUCSON  
**4,343**  
PHOENIX



**TUCSON**  
01/20/24 - 02/10/24  
TEMPLE OF MUSIC AND ART

Season Sponsor  
**I. Michael & Beth Kasser**

**TEMPE/PHOENIX**  
02/16/24 - 03/03/24  
TEMPE CENTER FOR THE ARTS

Season Corporate Sponsor  
**LAVIDGE**

Arizona Production Sponsor  
**Kay and Walter Oliver**

Tucson Production Sponsor  
**Margaret E. Mooney Foundation**

VICKI LEWIS  
**MASTER CLASS**



**atc**  
 ARIZONA  
 THEATRE  
 COMPANY

BY **TERRENCE McNALLY**  
 DIRECTED BY **MARCIA MILGROM DODGE**

**"Master Class, on stage in Tucson, is a reminder of the need for art. Lewis embodied the spirit of the opera star and made us hang on every word."**

- Arizona Daily Star



<b>40</b>	<b>23</b>	<b>2</b>	<b>11,099</b>	<b>7,615</b>
PERFORMANCES	TUCSON	STUDENT MATINEES	ATTENDANCE	TUCSON
	<b>17</b>			<b>3,484</b>
	PHOENIX			PHOENIX



**TUCSON**  
**03/02/24 - 03/23/24**  
 TEMPLE OF MUSIC AND ART

Season Sponsor  
**I. Michael & Beth Kasser**

**TEMPE/PHOENIX**  
**03/29/24 - 04/14/24**  
 TEMPE CENTER FOR THE ARTS

Season Corporate Sponsor  
**LAVIDGE**

Tucson Corporate Production Sponsor  
**RBC Wealth Management**

Phoenix Corporate Production Sponsor  
**Richard P. Stahl Charitable Fund**

Tucson & Tempe/Phoenix Production Partner  
**Tucson Desert Song Festival**

# TRUE WEST



**atc**  
ARIZONA  
THEATRE  
COMPANY

BY SAM SHEPARD  
DIRECTED BY JENN THOMPSON



**"This is the single greatest piece of live theater I have ever seen ... *True West* is a triumph of acting and storytelling."**

- BroadwayWorld



**38**  
PERFORMANCES

**22**  
TUCSON  
**15**  
PHOENIX

**11,190**  
ATTENDANCE

**7,042**  
TUCSON  
**3,648**  
PHOENIX

**atc**  
ARIZONA  
THEATRE  
COMPANY

**TUCSON**  
04/27/24 - 05/18/24  
TEMPLE OF MUSIC AND ART

Season Sponsor  
**I. Michael & Beth Kasser**

**TEMPE/PHOENIX**  
05/24/24 - 06/09/24  
TEMPE CENTER FOR THE ARTS

Season Corporate Sponsor  
**LAVIDGE**

Tucson Corporate Production Sponsor  
**RBC Wealth Management**

# ATC's New Play Workshops Readings, Festivals

Bringing new plays to life through a dedicated development pipeline allows ATC to showcase fresh work on its stages. During the 2023/2024 Season, ATC presented readings of two new plays, starting with a workshop of the new musical *My Man Godfrey*. With a book by Tony winner Rupert Holmes (*Mystery of Edwin Drood*) and music and lyrics by Mark Hollman (*Urinetown*), this production was directed by Matt August (ATC's Artistic Director).

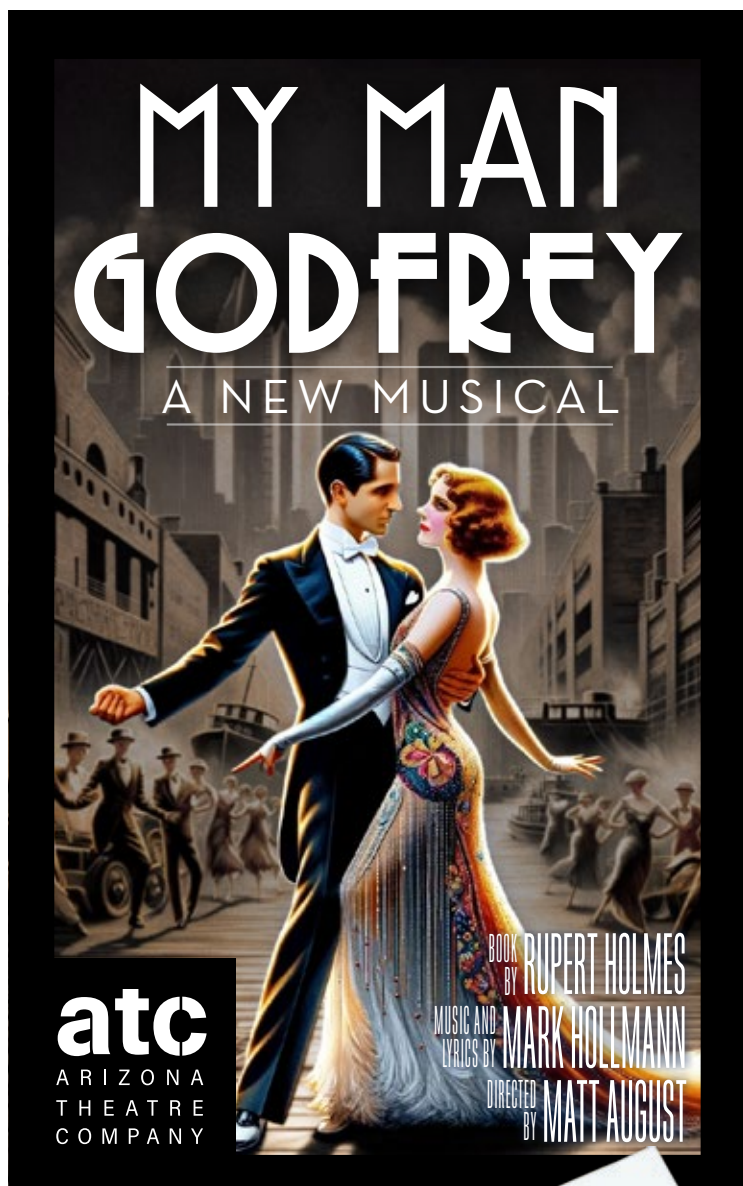
This workshop was a collaboration with Arizona State University. The cast included 11 Actors' Equity Association artists, six non-equity artists, and seven ASU interns, featuring top musical theatre talent from Metro Phoenix and two lead performers from out of town. Additionally, two local musicians, a bass player and a percussionist, contributed to the workshop.

This workshop provided the creative team with a valuable opportunity to fine-tune the script and score in anticipation of a potential full production in ATC's 2025/2026 Season. The audience, consisting of VIPs, donors, and potential investors, enjoyed a unique behind-the-scenes look at the intricate process of developing a musical theatre production.

*My Man Godfrey* is a musical set in 1930s New York, where a quirky socialite hires a homeless man to be her family's butler, only to fall in love with him. But who is he really? This story is celebrated as one of the best Screwball Comedies ever, offering a hilarious journey through the antics of one of Manhattan's craziest society families.

Tempe/Phoenix Individual Production Sponsor

**Enid and Mike Seiden**



# THE NUDE BY DAVID A. TUCKER II

The second event, an unstaged reading of *The Nude* by David A. Tucker II, is part of the Inaugural **National Latine Playwrights Award and Festival** took place on June 14 at Tempe Center for the Arts. The play was directed by Micha Espinosa, and the Festival Director was Elaine Romero. The reading included **4 Actors Equity Association artists**.

*The Nude* follows a struggling artist, his investment-savvy girlfriend, a rival painter, and an ambitious gallery owner as they find their lives and work intertwined in more ways than one in this dark art-world comedy.

THE NUDE  
by David A. Tucker II

# ATC's National Latine Playwrights Award & Festival



Established in 1995, Arizona Theatre Company's National Latine Playwrights Award (NLPA) is unique in its longevity and prescience. Under the leadership of ATC Playwright-in-Residence Elaine Romero, the award continues to create a greater awareness of historically excluded Latine writers' stories. After over a quarter-century of recognizing many outstanding works by Latine playwrights who have achieved remarkable success throughout the country, the award in 2024 evolved into the Latine Playwrights Award & Festival. ATC honored and presented the finalist's work with a panel discussion followed by the play reading of *The Nude*, and an awards ceremony honoring playwright David A. Tucker II at Tempe Center for the Arts in June 2024.



## David A. Tucker II

David A. Tucker II has had several plays developed at theaters across the nation. His theatrical works include *Smoke* (2018 O'Neill Theater Conference Finalist and 2018 AITAF Bridge Award Finalist), *The Nude* (winner of Arizona Theatre Company's National Latine Playwrights Award), *Veils*, *Persistence of Vision*, *Baghdad* (about his experiences commanding a military unit in Iraq), *Under the Skin*, and *North Wind Blowin'* (Chicago Dramatists' 2006 Many Voices Project). *The Nude* kicked off Arizona Theatre Company's inaugural National Latine Playwrights Award & Festival.

Growing up in a bicultural family of Mexican/Anglo descent, Tucker's plays often explore collisions of race, culture, and political systems. Since 2008, he has been teaching creative writing to wounded military veterans and their caregivers through the Writers Guild Initiative.

## NLPA SUPPORTERS AND SPONSORS

2023/2024 NLPA SPONSOR



PARTNERS

ARIZONA HISPANIC CHAMBER  
OF COMMERCE

PHOENIX ART MUSEUM

XICO

SUPPORTED BY

TEMPE CENTER FOR THE ARTS

SEASON SPONSOR

I. MICHAEL & BETH KASSER

CORPORATE SEASON SPONSOR

LAVIDGE



# SAVE THE DATE

ARIZONA THEATRE COMPANY'S 2023 GALA

## FOLLIES: GLITZ, GLAMOUR, AND THE GOLDEN AGE



HONORING 2023 GEORGIE AWARD RECIPIENTS

SUSAN AND JEFFREY REIN

AND

TONY AWARD-WINNING DIRECTOR, LYRICIST, AND PRODUCER

JACK O'BRIEN

**atc**  
ARIZONA  
THEATRE  
COMPANY

AT THE TEMPLE OF MUSIC AND ART  
SATURDAY,  
OCTOBER 14, 2023, 5:00 PM



ATC's Gala: Follies was one of the most memorable events, celebrating the power of live theatre with Georgy Award honorees Susan and Jeffrey Rein and the incomparable Jack O'Brien.

**290** | **284,216**  
ATTENDANCE | MONEY RAISED

"We can go to a film; we can turn on the television. There is a world of entertainment out there. But if you happen to like the theatre, there's really nothing like it. Its lavish and it's in front of you and you're not in control and you don't know if it's going to work or not. But when it does, on those nights when something truly magical happens, you are transformed. And we come back and back for the promise that it will. You make a difference."

- Jack O'Brien, 2023 Georgy Award Recipient



Fred & Jean Shaulis



# Education

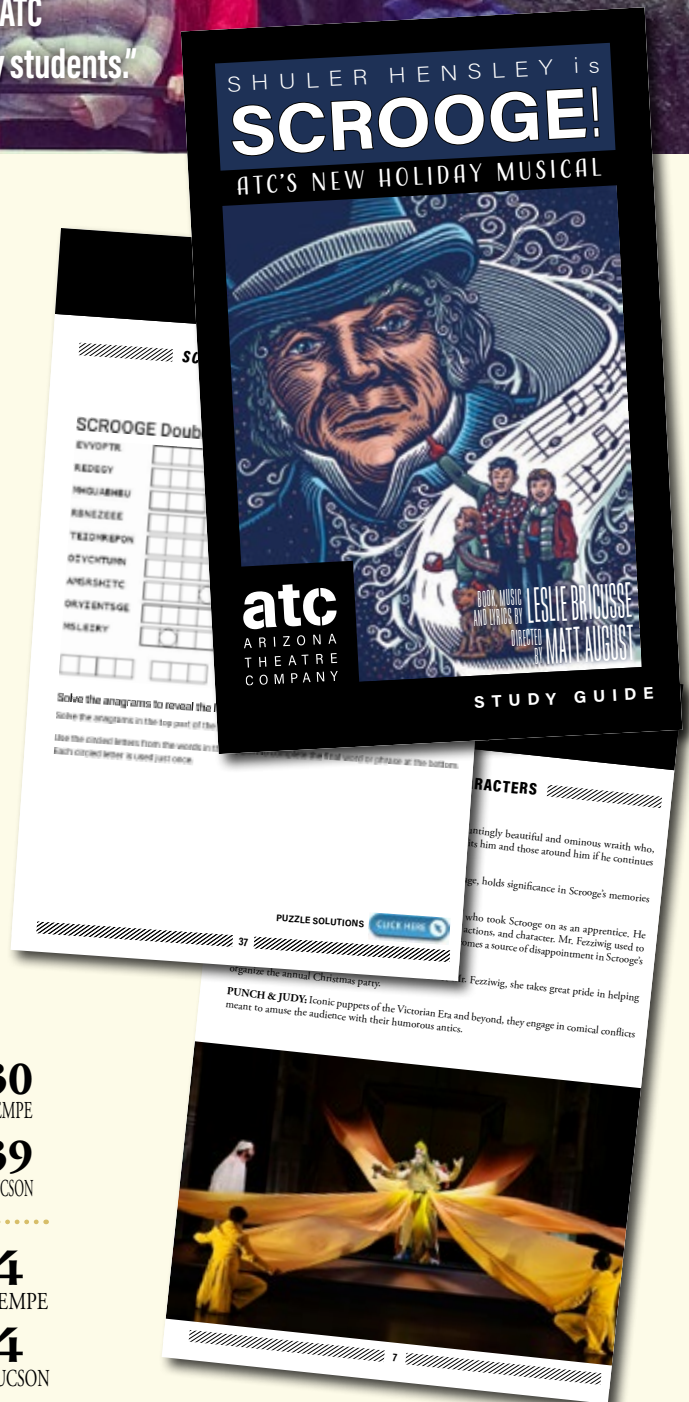


**"I have taken my classes to several matinees ... we love what ATC offers and the theater experience is always wonderful for my students."**

- Elena Malovich, Salpointe Catholic High School

Arizona Theatre Company provides area schools with educational opportunities for free play tickets and learning materials. Many of these schools are Title I schools with diverse enrollment. Often, this is the only opportunity these children have to experience the performing arts.

- Student Matinees** allow us to share the live theatre experience at low or no cost to young people throughout Arizona. The learning doesn't stop when the curtain comes down. A post-show discussion with members of the cast and ATC staff follows each Student Matinee performance.
- Teacher Preview Night** is an opportunity for educators to preview a production for free before their school group attends the Student Matinee performance (Value \$66,342).
- Study Guides** are informational packets teachers and students may reference before and/or after attending a play. These essential educational guides provide pre- and post-show discussion questions, a glossary of terms, historical context, and group activities for students to engage with.



<b>3,242</b>	<b>1,406</b>	<b>55</b>	<b>22</b>	<b>69</b>	<b>30</b>
students served	TEMPE	Title I schools served	TEMPE	Overall schools served	TEMPE
	<b>1,836</b>		<b>33</b>		<b>39</b>
	TUCSON		TUCSON		TUCSON

<b>3,503</b>	<b>1,539</b>	<b>8</b>	<b>4</b>
students and chaperones attended Student Matinees	TEMPE	student matinees	TEMPE
	<b>1,986</b>		<b>4</b>
	TUCSON		TUCSON

# Partnerships

ATC strives to do all we can to connect to our local communities. Find us at various events, join us for one of our Community Nights or Pride Nights, and catch a pre-show conversation! We put our artists and audiences at the heart of all we do and encourage conversation beyond the theatre walls.



## CURRENT & UPCOMING PARTNERSHIPS:

- |   |                          |   |                           |
|---|--------------------------|---|---------------------------|
| African American Museum of Southern Arizona | Bookmans                 | The Loving Library                      | Tempe Center for the Arts |
| Arizona Citizens for the Arts               | Bra Spa                  | Make Way for Books                      | Tempe Diablos             |
| Arizona Opera                               | Brick Road Coffee        | One-n-ten                               | Tempe Marketplace         |
| Arizona State University                    | City of Tempe            | Opera Guild of Southern Arizona         | Tempe Tourism Office      |
| Arizona Tourism Office                      | Den Walls Films          | Phoenix Pride                           | Tucson Jazz Festival      |
| ASU Gammage                                 | Desert Leaf Magazine     | Pima College                            | United Colours of Arizona |
| Athletico                                   | Desert Voices            | Reveille                                | University of Arizona     |
| Banner Alzheimer's Institute (BAI)          | Downtown Tempe Authority | Scottsdale Fashion Square               | Visit Phoenix             |
| Big Brothers Big Sisters of Central Arizona | IBT's                    | SAAF (Southern Arizona Aids Foundation) | Visit Tucson              |
|   | Kobalt                   | Stacey's at Melrose                     |                           |
|   | LAVIDGE                  |   |                           |
|   | Lead Guitar              |   |                           |

## CHAMBER MEMBERSHIPS:

- |                        |                                  |                             |
|------------------------|----------------------------------|-----------------------------|
| Green Valley Sahuarita | Greater Phoenix                  | Visit Phoenix               |
| Marana                 | Tempe                            | Valley Young Professionals. |
| Oro Valley             | Mesa                             |                             |
| Tucson Metro           | Greater Phoenix Equality         |                             |
| Tucson LGBT            | AZ Hispanic Chambers of Commerce |                             |
| Tucson Hispanic        | Visit Tucson                     |                             |

**54** | TOTAL PARTNERSHIPS

## ATC Hype Squad

Hype Squad is Arizona Theatre Company's group of outreach ambassadors. Hype Squad plays an integral role in organizing outreach festivals, events, and ATC functions where the team works to spread ATC's mission, vision, and values. Hype Squad members are well-versed in institutional knowledge about our shows, events, and community enrichment activities.



# Community Outreach

Arizona Theatre Company annually attends over 25 events in the Tucson and the Tempe/Phoenix metropolitan areas, which include Tucson Pride Festival, Tucson Festival of Books, Second Sunday on Mill, and the Phoenix Arts Educator Day and Cultural Resource Fair.



## Community Night

Arizona Theatre Company offered Community Night for each play in our 2023/2024 season. We know there are many individuals in our community who cannot afford a full-price ticket, so we extend a \$15 ticket online and \$20 at the door offer as a way to make our fantastic season accessible to everyone.

## Pride Night

Arizona Theatre Company offered Pride Night for each play in our 2023/2024 season. We welcome our LGBTQIA+ community to see our shows at a discounted price of \$15 in advance, \$20 at the door. ATC has long been committed to inclusivity both on stage and within the organization. Everyone has a place at our theatre and we are proud to celebrate our wonderfully diverse community.

# Presence in the Community



ARIZONA DAILY  
STAR

ARIZONA PBS

AZPM

ARIZONA  
REPUBLIC

COX

DESERT LEAF  
FRONTDOORS

KJZZ

ON MEDIA

PHOENIX  
MAGAZINE

TUCSON LIFESTYLE



## DIGITAL OUTDOOR

ATC had a major presence along 101, 202, and I-10 freeways and at Tempe Center for the Arts, plus Arcadia and Uptown (near Central & Camelback).

*Barefoot in the Park* – 3 weeks  
*Scrooge!* – 4 weeks  
*Master Class* – 3 weeks

# ATC's Cinema Series National Theatre Live

Arizona Theatre Company has exclusive rights in Tucson to share the best plays in British theatre available exclusively on cinema screens presented by National Theatre Live. ATC has presented screenings of National Theatre Live presentations on select Saturdays at the Temple of Music and Art.



National Theatre Live is the National Theatre's groundbreaking project to broadcast the best of British theatre live from the London stage to cinemas across the UK and around the world. Plays are filmed in front of a live theatre audience at the National Theatre in London, optimizing everything for the big screen so it's the next best thing to being there. The actors on stage deliver their performances as they normally would any other night. NTL tailors the position of cameras to capture each production and works closely with technical teams to make sure every element on stage such as lighting, hair, and make-up look fantastic on the big screen.

239  
HAMLET  
240  
FLEABAG  
256  
GOOD

835

Total Attendance at  
Cinema Series For  
First Three Viewings

\$9,603

Total Ticket Revenue  
for shows to date

\$2,240

Total Bar Revenue  
for shows to date

Grand Total Event Revenue  
for first three viewings

\$11,843



Good



42nd Street



Hamlet

# Notes from our supporters



"As a passionate advocate for the arts, I support Arizona Theatre Company because I believe in its mission to enrich the cultural landscape of our community. Serving on the board allows me to contribute to an organization that fosters creativity, nurtures talent, and brings diverse stories to life on stage. Through my involvement, I aim to ensure that ATC continues to inspire, educate, and connect people from all walks of life. I am particularly dedicated to supporting and inspiring the next generation of artists, theatre lovers, and patrons of the arts across Arizona and beyond, ensuring a vibrant future for our cultural community."

– Joan Sherwood, ATC Board of Trustees



"Arizona Theatre Company productions never disappoint us. ATC's expertise is evident at every level—set design, lighting, sound and of course the actors. We spend almost as much time discussing various aspects of the performance as the show itself. We laugh, we cry, we rejoice, and we're always amazed and entertained."

– Joan Reichard and Jay Glaser, Past ATC Trustees and Current Supporters

## Individual Donors

### Artistic Angels \$100,000+

I. Michael and Beth Kasser  
MaryBeth and Jerry Radke  
Susan and Jeffrey Rein

### Ovation Circle \$50,000 - \$99,999

Alice and Paul Baker  
Kay and Walter Oliver  
Enid and Michael Seiden

### Spotlight Circle \$25,000 - \$49,999

Anonymous  
Shirley Estes  
Deanna Evenchik-Brav and Garry Brav  
Jean and Fred Shaulis  
Richard P. Stahl Charitable Fund

### Artistic Director's Circle \$10,000 - \$24,999

Anonymous  
Char and Alan Augenstein  
Christine and John Augustine  
Mary Jan and Paul Bancroft

Denice Blake and John Blackwell  
Susan and Brian Boylan  
Gloria and Phil Cowen  
The Estate of Frank K. Davis  
Laura and Michael DiChristofano  
Patricia Engels and Dick Medland  
Barb and Ted Frohling

Jay Glaser and Joan Reichard  
Rob and Laurie Glaser  
Jeff Guldner and Sydney Reed  
Suzanne and Lester Hayt  
Rebecca and Albert Johnson  
Julie T. Kasper  
Bill Lewis and Rick Underwood  
Marcia and Andrew Meyer  
Becky and Jack Moseley  
Mary and Matthew Palencia  
Herschel Rosenzweig  
Cathleen and Bill Small Jr.  
Nancy Swanson  
Emily and Bob Vincent  
Michael Willoughby  
Linda Wurzelbacher

### Producer's Circle \$6,000 - \$9,999

Bruce L. and Lynne Wood Dusenberry  
Dr. Mary Jo Ghory  
Wendy and Richard Gilman

Ellyn and Jeff Gold  
Amanda and Stephen Heitz  
Lee and Arthur Herbst  
Debra and James Larson  
Rosanna Miller  
Mallory and Donald Riegger  
Susan Thompson

### Director's Circle \$4,000 - \$5,999

Anonymous  
Kelley and Ken Abrahams  
Beverly Arrington  
Mara and Keith Aspinall  
Mr. A. Frederick Banfield and  
Ms. Eileen M. Fitzmaurice  
Barbara and Franklin Bennett  
Connie and Rodney Boorse  
Susan Call  
Judy and Dave Crone  
Leslie Dashew and Jack Salisbury  
The Bill and Donna Dehn Charitable Fund  
Drs. Cindy Rankin and Thomas Elliott  
Joan Epstein  
Peggy Goulding  
Hugh Hallman  
Nora Hannah and David Dunteman  
Cristine and Ed Hansen  
Sandy and Ed Holland

Bob and JoAnne Hungate  
Brian Jorgensen and Mark Latka  
Marta and Steven Ketchel  
Teri and Norman Klein  
Mary and Paul Koss  
Sally and Richard Lehmann  
Lori Mackstaller  
Sandra Maxfield  
Adam James Michael and Manu Srivastava  
Caroline and Peter Morse  
Patrick J. O'Leary and Karen Yamasaki  
Karen Peters and Chris Thomas  
Tom and Eileen Rotkis  
Carol and Lex Sears  
Joan and Robbie Sherwood  
Joanne Sibley  
Carolyn and John Stuart  
Erica and Ross Stutman  
Judy Weill  
Taryn and Mark Westergaard  
James Wezelman and Denise Grusin  
Karen and James Wohlgenuth

### Opening Night Circle \$3,000 - \$3,999

Jacklyn Connoy and William Maguire  
Veronica and Thomas Delgado  
Mr. and Mrs. F. Don DeLong  
Vicki Fuller and Michael Momon

Robin and John Harris  
Mr. and Mrs. Mark Landay  
Phil and Nora Mazur  
Trudi and Robert Murch  
Jennifer and Charles Putney  
Trisa and Andrew Schorr

### Designer's Circle \$2,000 - \$2,999

Anonymous (2)  
Larry R. and Florence A. Adamson  
Barbara Bickel  
Amy Charles and Steve McMillan  
Ginny L. Clements Charitable Trust  
Alicia and Jon Crumpton  
Norma and Stanley G. Feldman  
Margaret and Dennis Fesenmyer  
Catherine "Rusty" Foley  
Pamela and Thomas Frame  
Dr. Ellis F. and Irene Stern Friedman  
Rebecca and David Gaspar  
Louise and Jim Glasser  
Lauren and Michael Gordon  
Leslie Hall and Ted Jarvi  
Anne and David Hameroff  
Sandra and Elliott Heiman  
Ann McLaren Helstad  
Gary Jackson and Oscar De La Salas  
Helen and Robert Jennette

Mack Jones  
Drs. George and Maria Knecht  
Gina and Phil Koo  
Nancy and Kent Kwoh  
Gloria Lawrence  
Terry McNellis  
Barbara Molotsky  
Donnasu and Jim Moody  
Nina and Brian Munson  
Pat and Wayne Needham  
Jean and Jordan Nerenberg  
Brenda and Jim Rowland  
Rita and Steven Schlosser  
Ron and Patricia Schwabe  
Gerald Schwartz  
Ingeborg and Ralph Silberschlag  
Karen Thornton  
Marlene Tompkins and Jim Pyne  
Weegee and Scott Whiteford

### Insider \$1,000 - \$1,999

Julie and Wayne Anderson  
Jessica L. Andrews and  
Timothy W. Toothman  
Lori and David August  
Marianne Ayres  
Lani and Josh Baker  
Martha Baron  
Carolyn Bass  
Rosalie and Al Baumrucker  
Frank and Cindy Bennett  
Tony and Maria Beram  
Susan Berg  
Judy Berman  
Sandra and Charles Bonstelle  
Tyna Callahan and Dimitri Voulgaropoulos  
Geraldine Cass  
Mr. and Mrs. D. Chavez  
Al and Sharyn Chesser  
Demion Clinco  
Elaine and Sidney Choen  
Bruce Covill and Lucia Renshaw  
Barbara Cummings  
Charles Curtis  
Marcia and David Davenport  
Barbara Davis  
Jane and Ernest Del Rio  
Stephen and Ruth Dickstein  
Mary Ann and Darryl Dobras  
Ms. Anna Don  
Tricia and Norman Don  
Adrienne Drell and Frank Nitikman  
Jacques Dumont  
Martha Durkin  
Martin and Zarin Felli  
Mr. and Mrs. John Francesconi  
Jane Gellman  
Paul and Carol Gerlach  
Angela and Jeffrey Glosser  
Cathleen and Thomas Godfrey  
Laurie and Chuck Goldstein  
Donita Gross  
Suzanne "Zippy" Gross  
Dr. C. Keith Groty and  
Reverend Mary V. Groty  
Pam and Stan Hart  
Sharon and Louis Hekman  
Tom and Sandy Hicks  
Judy and Michael Holser  
Bob and Susan Johnstone  
Leianne Jones  
Nathan Joseph  
Adrienne Kalyna and Scott Michel  
Jamie and Bill Kelley

Tom Kelly  
Bruce Kilbride and Lynn Krabbe  
Kit and Dan Kimball  
Carol and Foster Kivel  
Ronald and Ruth Koller  
Jane Langenfeld and Duncan Chang  
Thomas Large  
Laylah and Nathan Douglas  
Marianne and Bill Leedy  
Janice and Robert Leff  
Dr. and Mrs. Martin Levy  
Sharon Lewis and Mayor Shanken  
Ann Lovell  
Anne and Ed Lyman  
Janet and Charles Lynn  
Thom and Kathy Mansur  
Kit and Joan Marrs  
Michelle and Joseph Millstone  
Phyllis Morgan  
Karen Nackard  
Douglas Ng  
Parviz Nikravesh and Agnes Stahlschmidt  
Steven Ratoff  
Ann H. Redding  
Carole and Ronald Rezetko  
Christine and John-Paul Rocznik  
Chuck and Terri Roehrick  
Drs. Adib and Vivi Sabbagh  
Deborah and Marc Sandroff  
Suzanne and Lewis Schorr  
Marc and Tracy Schwimmer  
Mitra Shahi and David Cohen  
Cathy Shell  
Steve and Shelly Silverman  
Evelyn G. and Daniel J. Simon  
Sue Tavel  
Marcia and Tyler Tingley  
Karen and Monty Turner  
Tom Warne  
Mary and Bill Way  
Marion Weber  
Janice Wezelman and David Bartlett  
Lois Wienshienk  
Jana and Mark Wilcke

### Patron \$500 - \$999

Anonymous (5)  
Joseph Acker  
William Ahearn  
Gregory Ash and Susan Johnson-Ash  
Lyn Ashton and Herbert Stevenson  
Carolee and Daniel Asia  
Eva Bacal  
Pamela and Frank Bangs  
Jeannette and Robert Barnes  
Clare and Duane Baylor  
John Bechman  
Dr. Cash and Susanne Beechler  
Jeffrey F. Berg and Debra H. Paget Fund  
Elizabeth Blair  
Michael Bradford and Maikel  
Lahera Montero  
Jonathan and Carol Bradley  
Martha Brightwell  
Diane and Donald Bristow  
Suzanne and Don Brown  
Debbie Goodman-Butler and Patrick Butler  
Diana and Jay Caldwell  
Linda Carson  
Pete Celaya and Charlene Vasquez  
Emily Ravits  
Dr. Jay and Betty Citrin  
Jill and Kipp Clark  
Stacey and David Cohen

Jennifer and Jay Cook  
Jan Copeland  
Lynn Corrigan  
Andrea and Harry Crane  
Sherry Dailey  
Carol Des Cognets  
Diane Drewery and Don Wilks  
Carrie and Chuck Durham  
Ronna Fickbohm and Jeff Willis  
Mary Jo Fitzgerald  
Jan Olav and Lucille Flaaten  
Frank Flasch  
Kathy Garrett  
Barry Gillaspie  
Midge and Gerald Golner  
Frank Goodyear  
Paulette and Joseph Gootter  
Dr. Robert W. Gore  
Vicki Gotkin and Edward French  
Pamela Grissom  
Anjleen and Harry Gumer  
Sara and Andrew Gyorko  
The Haddock Stanton Foundation  
Rita Hagel  
Lynnell Gardner MD and  
Michael Hamant MD  
Ruth Murphy and John Hay  
Anne Leary and Bill Hemelt  
Bette Henriques  
Liz Hernandez  
James Herzfeld  
Susan Hetherington  
Lynn R. Hoffman  
Dr. H. Barry Holt and Mrs. Lucy V. Volt  
Lisa and Gary Israel  
William Jacobs  
Caroline Jank  
Toni Kane  
Guinn and Nate Kappler  
Fran and Jeff Katz  
Martha and George Kellner  
Barbara and Jay Kittle  
Karen and Sherwin Koopmans  
Lynne Lagarde and Bob Stankus  
Arvie and Karen Lake  
Katharine and John Lauder  
Joan Le Fevre  
Ellen and Philip Leavitt  
Dr. Alan Levenson and Rachael K. Goldwyn  
Lori Levine and Gary Benna  
Bertie Levkowitz and Thomas Herz  
Jo and Matt Madonna  
Ann and George Mavko  
Larry and Barbara Nelson  
Michael and Patricia Ore  
Suzanna and Steve Pangburn  
Jane and William Pearson  
Clyde and Jane Perlee  
Jeanne Pickering and Mike Andrew  
Noah Pollock  
Sylvia Pozarnsky and Tom Riley  
Valerie and Herschel Richter  
Drs. Linda Riordan and David Siegel  
Denise and Curt Robinson  
Donna and Darrell Sabers  
Barbara Sattler and Ken Hegland  
Patricia and Harry Schlosser  
Elizabeth Schulman  
Robyn and Edward Schwager  
Arleen and Fred Schwartz  
Polly and Joe Seeger  
Marge Schneider and Ed Shirley  
Amy Gittler and Michael Sillyman  
John Smith  
Rica Spivack

David Steele  
Claire Steigerwald  
Dan and Jill Stevenson  
Olga Strickland  
Charles H. Strub  
Michael and Jeanne Sturgis  
Hugh and Allyn Thompson  
Catherine and Bruce Uhl  
Lisa Ungar and Robert Fridrich  
Gary Waugh  
Clifford Webster  
Wendy and Elliott Weiss  
Mary and John Wilber

### Friend \$250 - \$499

Anonymous (11)  
Mary Ahrens  
Pauline Albert  
Susan Anderson-Smith  
Marilyn and Greg Anthony  
Robin and Kent Batty  
Kathleen and Bill Bethel  
Betsy Bolding  
Ellen Brackman  
Sallee Britton  
Michael Heimbuch and Mitchell Bunting  
Bonnie and David Burnett  
Burton Cagen  
Jane and William Canby  
Michael Candela and Dr.  
Marsha Brooks-Candela  
Karen and Jim Carlson  
Patricia and Jon Carlson  
Elaine and Morton Cederbaum  
Arlan Colton and Jeff Ramos  
Paula and Michael Culbert  
James Cummins  
Sandy Czachor  
Lawrence C. Dennis  
Susan and Barclay Dick  
Carole and David Drachler  
Mary and John Enemark  
Gordon Stuart Ewy  
Shera Farnham  
Nancy and Richard Fintzy  
Sarielyn and Sherman Fogel  
Cindy and Jerry Foley  
Claire Genser  
Bruce Gillaspie  
Miriam and Richard Glabman  
Ann Goldberg  
Stephen N. Graff  
Jennifer Gross  
Ann and Mike Guilfooy  
Candy and Jeffery Hazen  
Marcia and Gregory Hilliard  
Sarah Hiteman  
Gerri and Barry Holt  
Mary and Thomas Johnson  
Pam Johnson  
Richard and Shirley Johnson  
Joanne and Paul Johnston  
Denise Just  
Robin and Michael Kaiserman  
Louise and Joseph Keane  
Lendre and King Kearns  
Alan and Cynthia Kempner  
Carol and Stephen Klafter  
Suzan-Oda and Bill Knese  
Michael Kramer  
Sally Lanyon and Paul Hawkins  
Mickey and Jeff Leonard  
Marcia Lindley  
Sue Markovich

Sandra Marshall and Gerald Maggiora  
Lorraine and Patrick Martin  
Shirley and Stanley Matlick  
Lauri McCanless  
Sandra McNabb  
Beth and Marco Mercaldo  
Eleanor and George Mink  
The Greenleaf/Molberg Family Fund  
Virginia and David Morthland  
Linda and Donald Mower  
Timothy Mulcahy  
Alice and Edward Neuwirth  
Margie Nicholson  
Terence Nordahl  
Ben Norton  
Jones Osborn and Stephanie Mullins  
Susan and Chuck Ott  
Esther M. Pasalis  
Alyce Pennington  
Carol Pierce, M.D. and Kaye Crandall  
Kathy and Jack Rife  
Alice and Bill Roe  
Anne Roediger  
Emily Rosenberg Pollock  
Quinta and Philip Rosenberg  
Shirley and Thom Rossa  
Mira and Kent Rossman  
Sandra Rutherford  
Judy and Michael Schaffert  
Eric Scharf  
Sally and Robert Schlegel  
Dr. Howard and Trudy Schwartz  
Julie Karcis and James Seward  
Isaac Shaw  
Betty Shelby  
Bill Sheppard and Range Shaw  
Patricia and Mark Smallsreed  
Glenn Smith  
Joyce and Jim Smith  
Richard Snodgrass and Merrie Brucks  
Linda Jensen and Richard Snyder  
Barbara Soehnen  
Jennifer Spencer  
Connie Stapleton  
Darryl and Helen Stern  
Patricia Stewart  
Barbara Straub  
Laura Sullivan  
Gayle A. Traver  
Roger Ulrich  
Margaret Norem and Rick Unklesbay  
Marianne Vanzyl  
Hy Kaplan and Sue Vardon  
Gerald and Naomi Weiner  
Edwin Zimmermann

# Corporate, Foundation, and Government Partners

## Artistic Angels Circle \$100,000+

LAVIDGE  
Virgina G. Piper Charitable Fund

## Ovation Circle \$50,000 - \$99,999

Margaret E. Mooney Foundation  
The Shubert Foundation

## Spotlight Circle \$25,000 - \$49,999

APS  
Arizona Commission on the Arts  
Flinn Foundation  
HS Lopez Family Foundation  
SRP

## Artistic Director's Circle \$10,000 - \$24,999

Ameriprise Financial  
Arts Foundation for Tucson and  
Southern Arizona  
The Connie Hillman Family  
Foundation  
National Endowment for the Arts  
RBC Wealth Management  
Scottsdale Fashion Square  
United Healthcare of Arizona, Inc

## Producer's Circle \$6,000 - \$9,999

City of Tempe  
The John and Helen Murphey  
Foundation

## Director's Circle \$4,000 - \$5,999

Blue Cross Blue Shield of Arizona  
Desert Leaf Magazine  
Gila River Hotel & Casinos  
Margaret T. Morris Foundation  
National Bank of Arizona  
Spencer Fane LLP  
Tucson Desert Song Festival  
Tucson Media Partners

## Opening Night Circle \$3,000 - \$3,999

Cantor Forensic Accounting,  
PLLC  
Cox Charities  
Phoenix Pride

PICOR Charitable Foundation

## Designer's Circle \$2,000 - \$2,999

Kellenberger + Tollefson Center  
Long Realty Cares Foundation  
The Stocker Foundation  
Withtoft Apprill Family Founda-  
tion

## Insider \$1,000 - \$1,999

Ben Walls Films  
Sand Reckoner  
The Gadsden Company  
The Gordon Foundation

## Patron \$500 - \$499

Blackbaud Giving Fund  
The Learning Curve  
Margaret Mellon Hitchcock  
Foundation

## Friend \$250 - \$499

Actor's Equity Foundation, Inc.  
The Benevity Community Impact  
Fund  
Paypal Giving Fund



# Donor Advised Funds

Ken and Kelley Abrahams  
Charitable Fund at The American  
Gift Fund

Dan and Nancy Alcombright  
Fund at Schwab Charitable

Daniel Asia Fund at Schwab  
Charitable

BD2 Donor Advised Fund at  
the Community Foundation for  
Southern Arizona

Berg Charitable Gift at Fidelity  
Charitable

Bolduc Family Charitable Fund at  
Schwab Charitable

Caldwell Family Charitable Fund  
at Schwab Charitable

Frances Chapin Foundation  
Philanthropic Fund of United Way  
of Tucson and Southern Arizona

Amy Charles and Steve McMillan  
Donor Advised Fund at The  
Jewish Community Foundation of  
Southern Arizona

John and Judy Danilovs  
Charitable Fund at Fidelity  
Charitable

Dennis and Marla Daugherty  
Charitable Fund at Schwab  
Charitable

Bill and Donna Dehn Charitable  
Fund of the Ayco Charitable  
Foundation

DiChristofano Family Fund at  
Morgan Stanley GIFT

Anna Don Belton Charitable  
Fund at American Endowment  
Foundation

Adrienne Drell and Frank  
Nitkman Fund at National  
Philanthropic Trust

Amy and Robert Etzkorn  
Charitable Fund at Schwab  
Charitable

Michael and Evelynn Freed  
Charitable Fund at Schwab  
Charitable

Kathy Garrett Giving Fund at  
Fidelity Charitable

Jane Gellman Donor Advised  
Fund of the Jewish Community  
Foundation of Milwaukee Jewish  
Federation, Inc.

Marilyn Gerber Donor Advised  
Fund at Schwab Charitable

Janet Gerdes Giving Account at  
Fidelity Charitable

Robert and Laurie Kaye Glaser  
Donor Advised Fund at The  
Jewish Community Foundation of  
Southern Arizona

Thomas Godfrey Charitable Fund  
at Fidelity Charitable

Debbie Goodman and Patrick  
Butler Donor Advised Fund at  
Schwab Charitable

Gordon Family Fund at Fidelity  
Charitable

Greenleaf/Molberg Family Fund  
at Schwab Charitable

Guilfoy Family Charitable Fund at  
Schwab Charitable

Heid Family Charitable Fund at  
Fidelity Charitable

Mack Jones Donor Advised Fund  
at Schwab Charitable

Michael and Robin Kaiserman  
Philanthropic Fund of the Jewish  
Community Foundation of  
Southern Arizona

Karcis and Seward Giving Fund  
at Fidelity Charitable

Carol and Foster Kivel Family  
Fund at the Community  
Foundation for Southern Arizona

Phillip and Gina Koo Family  
Charitable Fund at Fidelity  
Charitable

Kwoh Family Charitable Fund at  
Vanguard Charitable

Ann and Luis Lancero Donor  
Advised Fund at Fidelity  
Charitable

Sally Lanyon Donor Advised  
Fund at The Jewish Community  
Foundation of Southern Arizona

Latka Jorgensen Charitable Fund  
at Schwab Charitable

Robert B. Leff and Janice M. Leff  
Fund at the Arizona Community  
Foundation

Bertie and Jack Levkowitz Donor  
Advised Fund at the Jewish  
Community Foundation of  
Southern Arizona

Charles Lynn and Janet Lynn  
Donor Advised Fund at Schwab  
Charitable

Meyer Family Foundation at  
Morgan Stanley GIFT

George and Eleanor Mink Family  
Fund at Schwab Charitable

Barbara D. Molotsky Fund at  
Fidelity Charitable

Patrick J. O'Leary Foundation and  
Fidelity Charitable

Pozarnsky/Riley Charitable Fund  
at Fidelity Charitable

Barbara L. Provus Charitable Fund  
at Schwab Charitable

Rein Family Fund at Schwab  
Charitable

Valerie and Herschel Richter  
Donor Advised Fund at the  
Jewish Community Foundation of  
Greater Phoenix

Roehrick Family Fund at Fidelity  
Charitable

Dr. Herschel and Jill Rosenzweig  
Donor Advised Fund at Jewish  
Community Foundation of  
Southern Arizona

Rotkis Charitable Fund at  
Schwab Charitable

Deborah and Marc Sandroff  
Donor Advised Fund at Morgan  
Stanley

Shirley Family Charitable Fund at  
Fidelity Charitable

Samuel Denmark Family Fund at  
Fidelity Charitable

Lex and Carol Sears  
Philanthropic Fund at United Way  
of Tucson and Southern Arizona

Daniel J. and Evelyn G. Simon  
Donor Advised Fund of the  
Jewish Community Foundation of  
Greater Phoenix, Inc.

Smallsreed Family Fund at  
Fidelity Charitable

Richard P Stahl Charitable  
Fund at American Endowment  
Foundation

Stonewall Foundation Fund  
at Community Foundation for  
Southern Arizona

Tavel Family Fund at Fidelity  
Charitable

Tyler and Marcia Tingley  
Donor Advised Fund at Fidelity  
Charitable

Gerald Weiner Designated  
Fund at the Jewish Community  
Foundation of Greater Phoenix

Elliott and Wendy Weiss  
Charitable Gift Fund at Schwab  
Charitable

Westergaard Giving Fund at  
Fidelity Charitable

James D. Wezelman Donor  
Advised Fund at the Jewish  
Community Foundation of  
Southern Arizona

Zimmermann Family Fund at  
Fidelity Charitable Fund

## LEGACY SOCIETY

**Honors those friends of ATC who have established a gift through a bequest,  
trust arrangement, or other estate plan provision.**

---

Anonymous\*

Anonymous

Jessica Andrews and Timothy W. Toothman

Cameron and Mary Artigue

Helen and Robert Begam\*

Nathaniel and Suzanne Bloomfield

Dr. and Mrs. James F. Blute, III

Betsy Bolding

Thomas Chapman

Steven Cohen and Michael Godnick

Jacklyn Connoy and William Maguire

Len\* and Doris Coris

The Estate of Frank K. Davis\*

Slivy Edmonds\*

Pat Engels

Bob and Nancy Eschrich

Carol Fink

Michael O. Flatt\*

Ted and Barb Frohling

Harry and Lois Garrett

Dr. Mary Jo Ghory

Chester and Ann Goldberg\*

Mr. Terrance M. Hanson

Mr. and Mrs. Edward J. Harrison

Andrew F. Holtz

Jacqueline Hufford-Jensen  
and Gregory Kroening

I. Michael and Beth Kasser

Dr. Philip Keller\*

Bill and Kathy Kinney

Gregory Kroening

Maxine and Jonathan Marshall\*

Joan A. Morris

Peggy and Gerry\* Murphy

Terry and Jerry Neuman

Don\* and Peg Nickerson

Martha and Terry Allen Perl

Endowment for the Arts

Ronald Robinette and Sharon Roediger

Arnold and Carol Rudoff

Robert V. Schauer and Melvin E. Mounts\*

William C.\* and Deborah Chisholm Scott

F. William Sheppard

Daniel J. and Evelyn G. Simon

Richard P. Stahl\*

Robert\* and Shoshana Tancer

Marlene Tompkins and James Pyne

Roy Van Note

Virginia A. Weise\*

Mark and Taryn Westergaard

Maggie White

Richard H.\* and Linda Whitney

\* deceased

# ADDITIONAL HIGHLIGHTS



Shuler Hensley and Youth Performers from *Scrooge!* Singing the National Anthem at Arizona Cardinals Game.



City Manager Rosa Inchausti, Council member Berdetta Hodge, Vice Mayor Jennifer Adams, Mayor Corey D Woods, Executive Director Geri Wright, Kasser Family Artistic Director Matt August, Deputy Community Services Director - Arts & Culture Brendon Ross, Trustee Char Augenstein, Board Chair Pat Engels at ATC's Ribbon cutting at Tempe Center for the Arts.



## ATC Day at the Capital - Proclamation (February 15, 2024)

Trustee Karen Wohlgemuth, Chief Development & Marketing Officer Paula Taylor, Executive Director Geri Wright, Representative & Trustee Analise Ortiz, Kasser Family Artistic Director Matt August, Trustee Char Augenstein at the Proclamation of ATC DAY at the Capital.

# 2023/2024 SEASON ARTISTS

**PLAYWRIGHTS** • LESLIE BRICUSSE (S) •  
TERRENCE MCNALLY (MC) • LYNN  
NOTTAGE (IA) • SAM SHEPARD (TW) • NEIL

SIMON (BIP) • DAVID TUCKER (N) • MARK HOLLMAN (N) • RUPERT HOLMES (MMG) • **DIRECTORS/CHOREOGRAPHERS** • MATT  
AUGUST (S) • MICHAEL BERRESSE (BIP) • MARCIA MILGROM DODGE "MMD" (MC) • BRENT GIBBS (TW) • SPENCER LIFF (S) • WALTER  
"BOBBY" MCCOY (MC) • ALAN J. PLADO (S) • OZ SCOTT (IA) • JENN THOMPSON (TW) • STEVEN GROSS (MMG) • MICHA ESPINOSA (N)  
• WALTER "BOBBY" MCCOY (MC) • ALAN J. PLADO (MC) • **DESIGNERS** • ROBERT J. AGUILAR (BIP) • JASON ARDIZZONE-WEST (S)  
• ELIZABETH CAITLIN WARD (S) • MATHEW DEVORE (BIP) (MC) • ALEXANDER DODGE (IA) (TW) • KISH FINNEGAN (BIP) • EDWARD E.  
HAYNES, JR. (MC) • DANIEL PERELSTEIN JAQUETTE (IA) • KAREN PERRY (IA) • BRAD PETERSON (S) • Yael LUBETZKY (MC) • TIM  
MACKABEE (BIP) • PAUL MILLER (S) • CRICKET S. MYERS (S) • DAVID O (S) • PHILIP ROSENBERG (TW) • ANGELA STEINER (TW) •  
VICTOR EN YU TAN (IA) • FABIO TOBLINI (MC) • KEN TRAVIS (TW) • ALEJO VIETTI (TW) • SHANE WALTZ (MMG) • MARY MORGAN (MMG)  
• **STAGE MANAGERS** • WESLEY APFEL (IA) • GLENN BRUNER (BIP) • ASHLEIGH DAVID (MC) • AMBER R. DETTMERS (TW) •  
DONAVAN DOLAN (S) • MYKEL MARIE HALL (BIP) (IA) (TW) • MOLLIE HEIL (MC) • KEVIN JINGHONG ZHU (S) • RAFI LEVAVY (S) •  
JAKOB W. PLUMMER (BIP) • BRIG JOHNSON (MMG) • EMMA PRANGE (MMG) • TANNER GURULE (N) • **OTHER CREATIVE TEAM/  
ADDITIONAL STAFF** • CLAYTON DOMBACH (IA) • HAROLD DIXON (S) • BROOKE FORD (S) • CHRISTIE KERR (IA) • LINDSAY  
MCDONALD (IA) • SEAN SANFORD (S) • AMY SUTTON (S) • AVA SPANIER (S) • CORY BURNS (MMG) • PHIL COLEMAN (MMG) • MARISSA  
BARNATHAN (MMG) • DANE FUTRAL (MMG) • CLAIRE DETOFF (MMG) • ELAINE ROMERO (N) • **ACTORS** • KARMINE ALERS (S) •  
DANNY BASS (S) (IA) • GEOFFREY F. BELLISTON (S) • BENI BERMUDEZ (S) • TRACEY N. BONNER (IA) • HARRY BOUVY (BIP) •  
AARON CAMMACK (S) (IA) • DAWN CANTWELL (IA) • TONY CASTELLANOS (S) • LYDIA CORBIN (IA) • DANIELA DELAHUERTA (S)  
• TRISHA DITSWORTH (S) • ANA DRAGOVICH (IA) • MATHEW FEDOREK (S) • KANISHA MARIE FELICIANO (MC) • ZACK FINE (TW)  
• BRENDA JEAN FOLEY (S) • JACQUELYN FUCHS (S) • MARSHALL F. GLASS (BIP) • RACHEL GOLD (MC) • STEWART GREGORY (S)  
• RHETT GUTER (TW) • SHULER HENSLEY (S) • SARAH HOLLIS (IA) • JOE JONES (BIP) • ALEXANDRIA JOY (S) • COREY JONES (IA) •  
HOLDEN JONES (S) • JOHN KATZ (S) • KYRA KENNEDY (BIP) • KATHRYN KELLNER BROWN (MC) • LILLIE LANGSTON (S) • VICKI  
LEWIS (MC) • BROOKLYN MARTIN (S) • SAUNDRA MCCLAIN (IA) • JESSE MERLIN (S) • CYNTHIA MEIER (TW) • TRENT MILLS (MC) •  
MAX MORGAN (S) • GEMMA PEDERSEN (S) • HAIDEN PEDERSON (BIP) • TANISHA J. RAY (IA) • VICTOR RYAN ROBERTSON (MC)  
• J SAVAGE (S) • GAYTON SCOTT (BIP) • DENNIS TAMBLYN (S) (MC) (TW) • ALISON THOMAS-VISGAR (S) • GEOFFREY WADE (TW) •  
ANNALISE WEBB (MC) • TYLER LANSING WEAKS (BIP) • AMELIA WHITE (TW) • MADELYN WHITEHEAD (S) • SARAH WIECHMAN (S)  
• CHRIS WILL (S) • GRETCHEN WIRGES (BIP) • MATHEW ZIMMERER (BIP) • KEVIN EARLEY (MMG) • STEPHANIE STYLES (MMG) • D.  
SCOTT WITHERS (MMG) • LUCAS COATNEY-MURRIETA (MMG) • RUSTY FERRECANE (MMG) • DEBBIE ROSENTHAL (MMG) • TRISHA  
DITSWORTH (MMG) • ALEXANDRIA JOY (MMG) • JOHN KNISPEN (MMG) • BRENDA JEAN FOLEY (MMG) • AMY JOY HALLIDAY (MMG) • SETH  
TUCKER (MMG) • WESLEY BROADSTREET (MMG) • KATIE MCFADZEN (MMG) • CASSIE CHILTON (MMG) • GABIRELLE GERMON (MMG) •  
GRACE ROGER (MMG) • BRI SIEMINSKI (MMG) • JOSE ANTONIO GUEVARA (MMG) • TOBY YATSO (MMG) • GUSTAVO A. FLORES (N)  
• CARLOS LEE HALL (N) • ZULEYL CASTRO (N) • MARIA AMOROCHO (N) • GIOVANNI DELGADO FERREIRA (N) • **MUSICIANS** •  
GREG ARMSTRONG (S) • MEGHAN CARAMELLA (S) • MELL D. CSICSILA (S) • ANDRIA FENNIG (S) • LEE GARDNER (S) • ALEX  
GUTIERREZ (S) • MIKE PADILLA (S) • RUSSELL RONNEBAUM (S) • LIZ SPENCER (S) • KEVIN EARLEY (MMG) • NATHAN BENUTEZ (MMG)  
• DANIEL BARSETTI-NERLAND (MMG) • **CASTING DIRECTORS** • RICHIE FERRIS (IA) (MC) • GEOFF JOSSELSO (BIP) • KATJA  
ZAROLINSKI (BIP) • MICHAEL DONOVAN (IA) (MC) • KELLY GILLESPIE (TW) • **OVERHIRE** • TORI ADAM • CHENOA BAKER • CRYSTAL  
BOLES\* • MARIAH BOWERS • CALEB BROWN • MARCELLA CABRERA-FLORES • SHELBY CANTRELL • EMILY CARTAGINE •  
KOLETON COX • EMMA DEVORE • JILL ELIEL • TOBIAS FALTER\* • KISH FINNEGAN • LISA  
GOERING • NIK GOOD • KYRA JONES-WILLIAMS • LUIS LOZA • LEO MARTINEZ • BOBBY  
MAYWEATHER\* • ANTHONY MULDROW • BECCA MCCULLOUGH • ASHLEIGH MCGILL  
• AMBER MOLDREM • TONY NEEDHAM • CAROLINE PRICE • NANALEE RAPHAEL •  
JUDY SHIVACK • BENJAMIN SMITH\* • ARIEL STEINBERG\* • RAQUEL STEWART •  
BARBARA TANZILLO • EMA VALENCIA • SHANE WALTZ • SARAH WILLWATER

203

TOTAL HIRES

119

IN STATE

84

OUT OF STATE

BIP = Barefoot in the Park S = Scrooge IA = Intimate Apparel MC = Master Class TW = True West MMG = My Man Godfrey TN = The Nude

As the only Arizona member of the League of Resident Theatres, Arizona Theatre Company hires according to all LORT agreements with the following unions: Actors Equity Association (AEA), Stage Directors and Choreographers Society (SDC), United Scenic Artists (USA), and International Alliance of Theatrical Stage Employees (IATSE). \* Member of IATSE Local 336 \* Member of IATSE Local 415

# ARIZONA THEATRE COMPANY

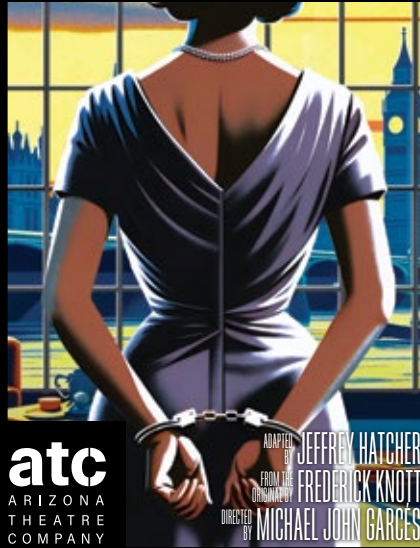
# atc

ARIZONA  
THEATRE  
COMPANY

## 2024/2025

## SEASON 57

## DIAL M FOR MURDER



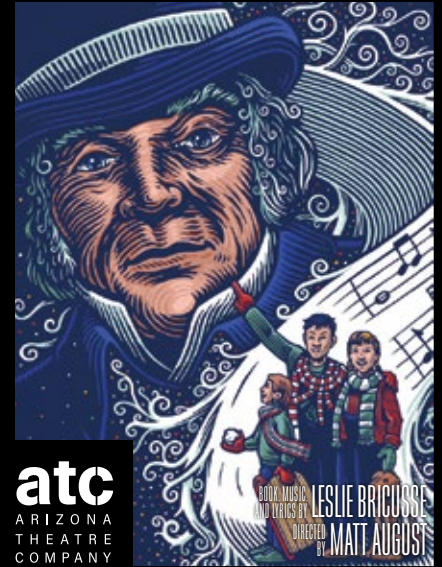
atc  
ARIZONA  
THEATRE  
COMPANY

ADAPTED BY JEFFREY HATCHER  
FROM THE ORIGINAL BY FREDERICK KNOTT  
DIRECTED BY MICHAEL JOHN GARGES

TUCSON: 09/22/24 - 10/12/24  
TEMPE: 10/19/24 - 11/03/24

## SCROOGE!

ATC'S HOLIDAY MUSICAL



atc  
ARIZONA  
THEATRE  
COMPANY

BOOK, MUSIC, AND LYRICS BY LESLIE BRICUSSÉ  
DIRECTED BY MATT AUGUST

TUCSON: 11/03/24 - 11/30/24  
TEMPE: 12/07/24 - 12/28/24

## BLUES IN THE NIGHT

FEATURING THE MUSIC OF  
BESSIE SMITH, DUKE ELLINGTON, JOHNNY MERCER, HAROLD ARLEN,  
ALBERTA HUNTER, JIMMY COX, IDA COX, AND MORE!



atc  
ARIZONA  
THEATRE  
COMPANY

CONCEIVED AND  
ORIGINALLY DIRECTED BY SHELDON EPPS  
ORIGINAL VOCAL ARRANGEMENTS  
AND MUSICAL DIRECTION BY CHAPMAN ROBERTS  
REORCHESTRATIONS AND ADDITIONAL  
VOCAL ARRANGEMENTS BY SY JOHNSON  
DIRECTED BY RICARDO KHAN

TUCSON: 01/26/25 - 02/15/25  
TEMPE: 02/22/25 - 03/09/25

## BOB & JEAN

A LOVE STORY



atc  
ARIZONA  
THEATRE  
COMPANY

BY ROBERT SOHENKKAN  
DIRECTED BY MATT AUGUST

TUCSON: 03/23/25 - 04/12/25  
TEMPE: 04/19/25 - 05/04/25

## Ms. Holmes & Ms. Watson

- Apt. 2B



atc  
ARIZONA  
THEATRE  
COMPANY

BY KATE HAMMILL  
DIRECTED BY MARCIA MILBROM DODGE

TUCSON: 05/18/25 - 06/07/25  
TEMPE: 06/14/25 - 06/29/25