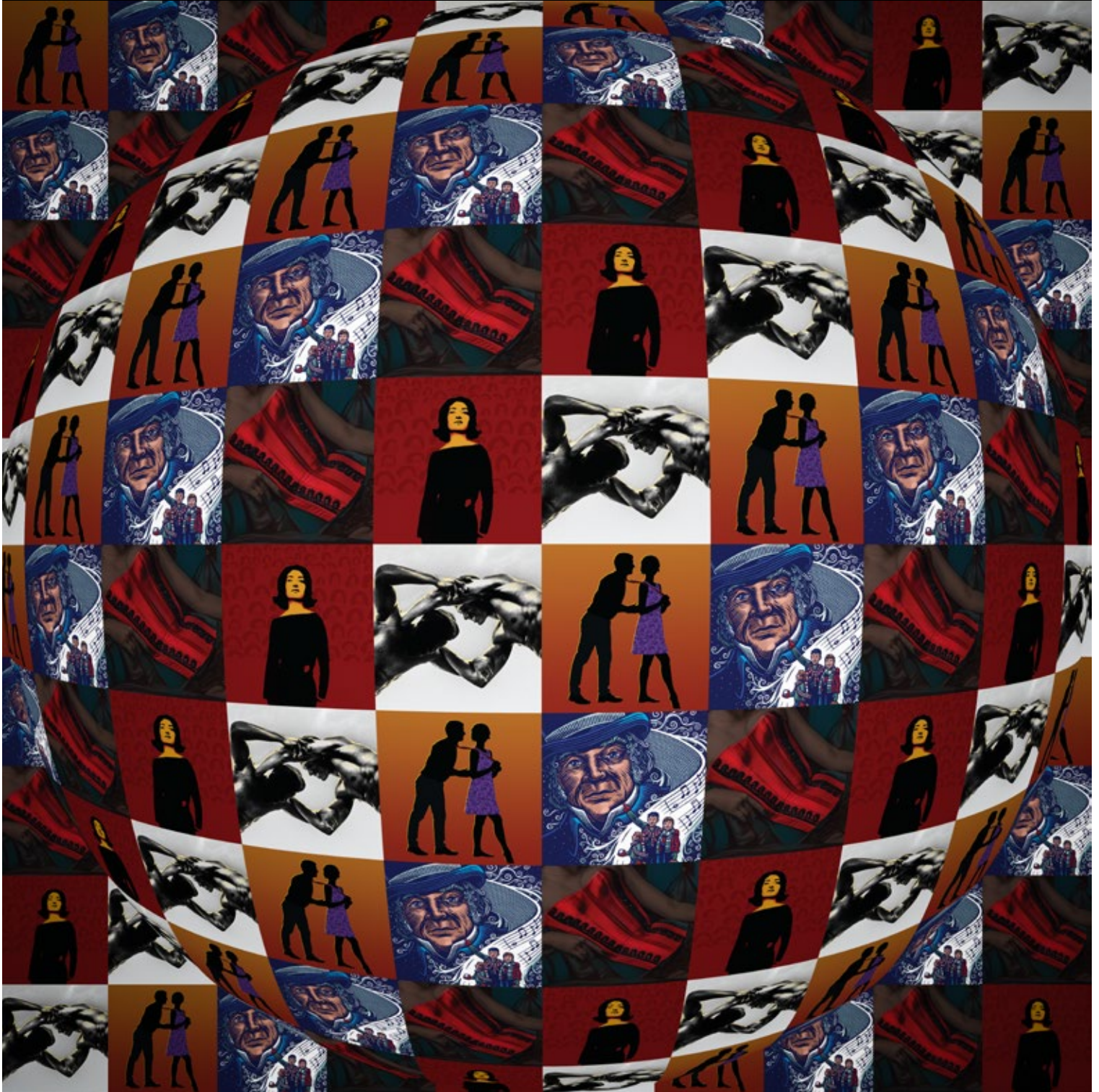




ARIZONA THEATRE COMPANY 2023/2024 IMPACT REPORT



THE OFFICIAL STATE THEATRE OF ARIZONA

ATC BOARD OF TRUSTEES 2023/2024

BOARD OFFICERS

Pat Engels, Chair
Kay Oliver, Secretary
Adam Michael, Treasurer

BOARD OF TRUSTEES

Beverly Arrington
Char Augenstein
Matt August
Kasser Family Artistic Director
Brian Boylan
Michael Bradford
Phil Cowen
Deanna Evenchik-Brav
Joanie Flatt
Hugh Hallman
Nora Hannah
Stephen Heitz

Gary Jackson
Brian Jorgensen
Debra Larson
Michael O'Connor
Analise Ortiz
Mary Beth Radke
Don Riegger
Joan Sherwood
Erica Stutman
Karen Wohlgemuth
Geri Wright
Executive Director

EMERITUS TRUSTEES

Jessica L. Andrews
Managing Director Emeritus
Paul Baker
Katie Dusenberry
Lynne Wood Dusenberry
Darryl Dobras
Shirley Estes
David Ira Goldstein
Artistic Director Emeritus
I. Michael Kasser
Dr. John Schaefer
F. William Sheppard

ATC STAFF 2023/2024

Geri Wright
Executive Director

Matt August
Kasser Family Artistic Director

ARTISTIC & PRODUCTION

ASSOCIATE PRODUCER

Matthew Wiener

PLAYWRIGHT-IN-RESIDENCE

Elaine Romero

PRODUCTION MANAGER

Jamie S. Lara

ASSOCIATE

PRODUCTION MANAGER

Sheldon Lane

PRODUCTION OFFICE ASSISTANT

Emma Prange

STAGE MANAGEMENT

ASSISTANT STAGE MANAGER

MyKel Hall

STAGE MANAGER APPRENTICE

Jess O'Connor

SCENERY

TECHNICAL DIRECTOR

Arthur Potts

ASSISTANT TECHNICAL DIRECTOR

Jared Strickland

LEAD CARPENTER

John Crain

CARPENTERS

Larry McDonald

Cory Walters

PAINTS

CHARGE SCENIC ARTIST

Charlotte Alcorn

ASSISTANT CHARGE

SCENIC ARTIST

Sammie Nickel

PROPERTIES

PROPERTIES SUPERVISOR

Faith Boucher

PROPERTIES ARTISAN

Aidyn Corkell

COSTUMES & WARDROBE

COSTUME DIRECTOR

Shelly Williams

ASSISTANT COSTUME DIRECTOR

Sandahl Tremel

ASSISTANT COSTUME DESIGNER

Lindsay McDonald

DRAPER

Phyllis Davies

JUNIOR DRAPER

Caitlin Fanning

WIG & MAKEUP SUPERVISOR

Maggie Clark

WARDROBE SUPERVISOR

Jacob Miller

TEMPE/PHOENIX

WARDROBE SUPERVISOR

Afton Hensley

ELECTRICS & PROJECTIONS

LIGHTING & PROJECTIONS SUPERVISOR

Tiffer Hill

LEAD ELECTRICIAN

Allison Gammons

STAFF ELECTRICIAN

Alexis Glas

TEMPE/PHOENIX

LIGHT BOARD OPERATOR

Wade Yorke

SOUND

SOUND SUPERVISOR

Mathew DeVore

PRODUCTION SOUND ENGINEER

Brianna Moore

TEMPE/PHOENIX

SOUND ENGINEER

Sophia Rodriguez

STAGE CREW

TEMPE/PHOENIX CREW LEAD

Tanner Gurule

ADMINISTRATION

GENERAL MANAGER

Julie Fancher

CHIEF OF STAFF

Charlene Vasquez

DIRECTOR OF OPERATIONS AND EVENTS

Nick Cianciotto

COMPANY MANAGER

Cat Tries

ASSOCIATE COMPANY MANAGER /

EDUCATION OUTREACH

Mary-Jo Okawa

DEVELOPMENT & MARKETING

CHIEF DEVELOPMENT

AND MARKETING OFFICER

Paula Taylor

DIRECTOR OF ANNUAL FUND AND

STEWARDSHIP

Carley Elizabeth Preston

DIRECTOR OF DONOR RELATIONS -

TUCSON

Cami Cotton

DIRECTOR OF DONOR RELATIONS -

PHOENIX

Debbie Hickey

GRANTS MANAGER

Gretchen Pace

DIRECTOR OF MARKETING

Bitty Rosenberg

CREATIVE AND BRAND MANAGER

Richard Giuliani

MARKETING OUTREACH COORDINATOR

Ethan Hoover

DIGITAL STORYTELLER & PUBLIC

RELATIONS MANAGER

Marina Nelson

DIGITAL MARKETING COORDINATOR

Nicholas Kuhn

FINANCE

CHIEF FINANCIAL OFFICER

Mark Kochman

SENIOR ACCOUNTANT

Nancy Kilmer

ACCOUNTING COORDINATOR

Patricia Walter

BOX OFFICE &

HOUSE MANAGEMENT

DIRECTOR OF PATRON SERVICES

Juliet Martin

ASSISTANT DIRECTOR OF PATRON

SERVICES

Linda Schwartz

PATRON SERVICES MANAGER

Richard Ragsdale

ASSISTANT BOX OFFICE MANAGERS

Carrie Luker

Keith LaSpaluto

PATRON SERVICES ASSOCIATES

Katelin Andrews

Sophia Nagore

Sarah Smiley

Gadيجا Samie

Wendy Sander

HOUSE MANAGER

Bill Bethel

FACILITIES

FACILITIES MANAGER

Horace Ashley

MAINTENANCE SUPERVISOR

Dean Morgan

FACILITIES STAFF

Jesus Francies

Derrick Herrera

BAR STAFF

Xia Monet

Caitlin Pepe

Zoe Soleil

Fran Greer

Company Overview

A vibrant nonprofit since 1966 and the Official State Theatre of Arizona, Arizona Theatre Company (ATC) sets the gold standard for artistic excellence and innovation. As Arizona's sole LORT (League of Resident Theatres) professional nonprofit regional theatre, ATC is a beacon of cultural enrichment and theatrical prowess. Guided by the visionary leadership of Executive Director Geri Wright and Kasser Family Artistic Director Matt August, ATC consistently assembles a team of world-class artists dedicated to delivering exceptional theatrical experiences to the communities of Tucson and the Tempe/Phoenix metropolitan area.

ATC's impact extends far beyond the stage, enhancing residents' overall quality of life. With a steadfast commitment to outreach, education, and community engagement, ATC annually reaches more than 300,000 patrons through mainstage productions, student matinees, and community initiatives. We believe in the transformative power of art. As a community pillar, ATC endeavors to invest and engage with our local communities.

Moreover, ATC serves as a significant economic driver, bolstering Arizona's economy by stimulating housing markets, generating employment opportunities, and boosting revenue for local businesses. According to a study by the Downtown Tempe Authority, as the largest tenant and new partner at Tempe Center for the Arts, ATC has increased foot traffic by over 200% this year, invigorating the local economy while offering new cultural experiences for residents and tourists alike. Similarly, as stewards of the Temple of Music and Art, ATC draws thousands of patrons from across the city, providing vibrancy and enriching the cultural landscape in Tucson.



TUCSON

P.O. Box 1631, Tucson, AZ
85702-1631

Performance Venue
Temple of Music and Art
330 S. Scott Avenue



PHOENIX / TEMPE

P.O. Box 61893, Phoenix, AZ
85082-1893

Performance Venue
Tempe Center For the Arts
700 W. Rio Salado Pkwy

833-ATC-SEAT / ATC.ORG

From the Board Chair



vibrant Tempe and East Valley communities. The enthusiasm and support we've received have been truly heartwarming.

Arizona Theatre Company produced five mainstage shows in its 2023/2024 Season, including its very first big holiday musical, *Scrooge!* It was a joy

The 2023/2024 Season was Arizona Theatre Company's 56th anniversary, and it will be remembered as a year of exciting changes and remarkable growth. Under the creative visionary leadership of Kasser Family Artistic Director Matt August, during his first full season, we embarked on an inspiring journey.

Our move to the Tempe Center for the Arts, led by our Executive Director Geri Wright, marked a significant milestone. This new home has provided a stunning venue for our productions and deepened our connection with the

to see so many families coming together to enjoy our performances in Tucson and Tempe. Each title in our season was meticulously crafted in our production shop.

Our patron base grew alongside our community partnerships as we showcased our new home at Tempe Center for the Arts and fostered our incredible legacy at the Temple of Music and Art. This season has been a testament to the power of the arts to bring people together and create lasting memories.

Here's to a year of innovation, community, and the transformative magic of theatre.



Pat Engels
Board Chair, ATC

boardchair@atc.org

From the Kasser Family Artistic Director



and we are excited to continue nurturing these vital perspectives both in this development pipeline and on our mainstage with shows like *Intimate Apparel* and *Blues in the Night*.


We built partnerships with Arizona State University and Arizona Opera and deepened our relationship with University of Arizona. In collaboration with ASU, we had seven student interns working on our two-week workshop of the new musical *My Man Godfrey*, where they each worked with three Broadway creatives, two of whom are Tony winners. We also engaged ASU's

This season, we celebrated not only the art of theatre but also our local artists and the power of diversity on our stage. ATC hired more local artists this last season than the previous two seasons combined, and more BIPOC artists than in each of the previous seasons since the pandemic. A highlight was the 26th National Latine Playwrights Award turned into a FESTIVAL, shining a brighter spotlight on the brilliant voices that enrich our region and country. This initiative underscores our commitment to amplifying underrepresented stories,

leading Latinx theatre scholar to direct the NLPA-winning play reading. We hope to grow the NLPA Festival and continue to build a more family, and Phoenix/Tempe-based audience.

Looking ahead, we are leaning into our commitment to local artists by engaging Tucson actor Aaron Cammack as our 2024/2025 Season Resident Artist. You will recognize him from both *Intimate Apparel* and *Scrooge!* last season. Not only will he continue playing on our stages in three of the upcoming shows, but he will deepen ATC's engagement with the community by offering workshops and community outreach on behalf of ATC.

Thank you for being an integral part of our journey. Your support has made this season a resounding success, and I look forward to what we will achieve together in the coming year.



Matt August
Kasser Family Artistic Director, ATC

maugust@atc.org

From the Executive Director



It has been an exciting year at Arizona Theatre Company, with several successful firsts that brought more theatre-lovers back to our stages as well as many new audience members who we welcomed for the first time!

Season 57 marked the first season created by Kasser Family Artistic Director Matt August, and audiences responded enthusiastically to the quality, variety, and depth of our shows. *Scrooge!* brought generations of families together for a heartfelt holiday tradition and drew more first-time patrons to ATC

than we have seen for any show in the last five years. Overall, we saw a 14% increase in the number of patrons experiencing live theatre at ATC combined in Tucson and Tempe.

Speaking of Tempe, we had a tremendous first season at our new metropolitan Phoenix home at Tempe Center for the Arts. It was delightful to see more than 7,000 additional patrons attending shows in Tempe over the prior year. We heard many wonderful comments about the new venue including the ease of parking, beautiful facility, and overall experience. Our partnership with the City of Tempe continues to grow, and we were honored to receive the Downtown Tempe Authority 2024 Cultural Impact Award.

The 2023/2024 Season was filled with dozens of partnerships with organizations and companies in both communities, providing pathways to help

us reach new audiences and strengthen our ties in the communities we serve. Audiences in both cities responded strongly to our holiday book drives during *Scrooge!*, netting more than 550 books for Make Way for Books in Tucson and Loving Library in Phoenix to provide to youth in those communities.

As a nonprofit organization, it is our board of trustees who help set our direction and provides guidance and support to ensure Arizona Theatre Company is thriving as Arizona's State Theatre for the next 57 years and beyond. Their dedication to the mission and vision of ATC is crucial as we chart our course for success, and I am eternally grateful for their visionary leadership and their invaluable contributions made to ensure the growth and success of Arizona Theatre Company.

Critical to our success is you – as a donor, subscriber, theatre-lover, and ATC advocate! By sharing your passion for live theatre with friends and family and supporting Arizona Theatre Company, we can continue to enrich the lives of our audiences and communities well into the future.

Geri Wright
Executive Director, ATC

gwright@atc.org



2023/2024

ATC - CELEBRATING A LONG LEGACY IN ARIZONA



The 1960s The Beginning

Arizona Theatre Company is established as Arizona Civic Theatre in 1967 by Sandy Rosenthal and a group of civic and business leaders in Tucson with the intent to become a fully professional theatre. Performances take place in the basement of the Santa Rita Hotel.

The first four-show season opens with *Generations* in July 1967, directed by Founding Artistic Director Rosenthal. Total attendance for the season was 4,000, and the operating budget was \$8,000. In 1968, the newly formed Arizona Commission on the Arts and Humanities awards its first grant to the theatre. The 1968 production of Arthur Miller's *A View from the Bridge* features the Arizona Civic Theatre's first Equity actor, Antony Carbone, who performed in films and plays around the country.



The 1970s A Decade of Growth

The company becomes fully professional, increasing the quality of everything from costumes to actors. It finds a new home at Tucson's newly built Leo Rich Theatre and takes its show *Vanities* on the road to Phoenix

for the first time. A name change and new managing director and artistic director set the stage for continued success.

After moving to a downtown Tucson building once occupied by the Salvation Army in 1970, the company makes the Leo Rich Theatre at the newly completed Tucson Community Center (now Tucson Convention Center) its home in 1972. The company's first grant from the National Endowment for the Arts helps hire Equity actors under a Guest Artist Contract. David Hawkanson is named ACT's managing director in 1976, and Rosenthal steps down as Mark Lamos becomes artistic director for a short stint. He goes on to make a name for himself as a director on Broadway and around the country. In 1979, the company changes its name to Arizona Theatre Company.



The 1980s A Decade of Change

ATC experiences continuing change and promise as Artistic Director Gary Gisselman leads a full schedule of productions each season in both Phoenix and Tucson. The decade's

end sees the opening of Phoenix's Herberger Theater Center, a project in which ATC plays an instrumental role and that serves as ATC's Phoenix home for 32 years.

In 1983, ATC for the first time presents its full six-play season in Tucson and in two different Phoenix facilities: Phoenix College Theatre and the Scottsdale Center for the Performing Arts. The company is commended by President Reagan on behalf of the President's Committee on the Arts and Humanities on its unique two-city operation and designated a national model. The Herberger Theater Center breaks ground in 1986 and opens in 1989, heralding new growth potential for ATC in the Phoenix area.



The 1990s Promise for the Future

ATC establishes its new Tucson home at the renovated Temple of Music and Art and settles in at Phoenix's Herberger Theater Center. The decade welcomes the company's longest-running Artistic Director, David Ira Goldstein, whose 26-year

tenure includes producing or directing more than 200 plays.

In 1990, the City of Tucson completes renovations on the Temple of Music and Art, a 1927 Spanish Colonial-style building saved from condemnation, for ATC's new Tucson home. Jessica Andrews is named managing director in 1995. The company announces it will produce one new play a year, and also begins a long relationship with playwright Steven Dietz with the world premiere of his adaptation of Bram Stoker's *Dracula*. ATC hosts London's The Royal National Theatre's production of *Othello* in Phoenix and *Hamlet* in 2001 starring Simon Russell Beale, one of England's bravest and greatest actors.

For more than 50 years, excellence has been at the heart of the mission of Arizona Theatre Company. As a cornerstone of the cultural life of our state, ATC has achieved prominence through the dedication and imagination of hundreds of artists, craftspeople, and supporting audiences in both Tucson and Phoenix.

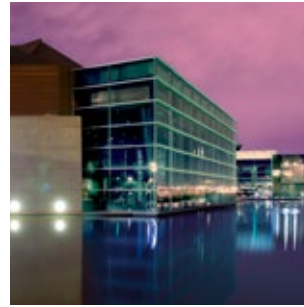


The 2000s Turn of the Century

Heading into the new century, ATC has produced more than 5,000 performances of nearly 200 plays, including many Tony Award and Pulitzer Prize winners. While the start

of the decade sees growth, the recession requires the company to adapt with more co-promotions and smaller casts.

As part of its ongoing mission to serve as an educational resource for the community, ATC introduces over a quarter million young people to the magic of live professional theatre through its Student Matinee Program and established educational ties with the University of Arizona, Arizona State University, and Stephen F. Austin State University in Nacogdoches, Texas. ATC's 2009/2010 Season opens with an adaptation of Khaled Hosseini's *The Kite Runner*, which goes on to Broadway and national and international tours. Kevin Moore serves as managing director, and in 2009, Jessica Andrews retires after nearly 14 years with the company, returning as interim managing director in 2013.



The 2020s the Future is Now

With an active Board and new leadership in place, excitement for the new decade is palpable. In early March 2020, ATC begins previews of a co-production with Milwaukee Repertory Theatre, *The Legend of Georgia McBride*. With many events planned and strong ticket sales, the show opens on March 13, 2020, the same day the theatre – along with the rest of the world – comes to a halt due to the spread of Covid-19.

With a reduced staff, ATC produces a digital season full of play workshops and readings while focusing on reimagining the organization's structure from top to bottom to ensure sustainability into the future. The company returns to the stages in Fall 2021 in its best position financially in well over a decade, with tireless support from the Board of Trustees. Matt August, a seasoned theatre professional who has more than 90 directorial projects under his belt, was named ATC's Kasser Family Artistic Director. In Fall 2023, ATC moves to its new Metropolitan Phoenix home at Tempe Center for the Arts for its 56th Season.



The 2010s Celebrating 50 Years

ATC celebrates its 50th decade of professional theatre in Arizona with a variety of standout shows coproduced with an array of regional theatre companies including the Guthrie Theater, The Acting Company, San Jose Repertory Theater, Seattle Repertory Theatre, and Milwaukee Repertory Theatre.

Production quality remains high as the company experiences a variety of leadership changes and financial challenges. David Ira Goldstein retires in 2017, and David Ivers then Sean Daniels take the helm as artistic director. Billy Russo is named managing director in 2015 with a focus on ATC's next 50 years. Geri Wright is named managing director at the end of 2019.

SEASON 57



2024 / 2025

Economic Impact



The 2023/2024 Season brought about many exciting opportunities, with robust ticket sales and gifts of support from our amazing community. As you delve into this impact report, we trust that you'll appreciate the substantial economic influence of ATC and its enduring role as a cultural cornerstone for the state. ATC not only generates employment opportunities but also enhances the reputation of Tempe and Tucson as premier cultural tourism hotspots. ATC is a champion of education and fosters inclusivity for all to partake in and enjoy performances through its community outreach and education efforts. We're thrilled about the positive impact we're making!

According to Americans for the Arts, the arts contribute \$1.1 billion annually to Arizona's economy by generating revenue, supporting jobs, and attracting tourists.

Letter From The Chief Development & Marketing Officer



What a year it has been! As you read through this Impact Report, I hope you gain insight into the critical role ATC plays – not only as the leading regional nonprofit theatre in the state but as the official State Theatre. Our investment in the communities we serve is profound. The level of theatre is unlike anything else you will find in the state. But

we don't stop there. Our robust education and community outreach positions ATC as a leader in the state, working toward our mission to bring all Arizonans together.

Despite the stagnation in giving across the United States and rising costs, ATC has managed to increase both the number of

our donors and our overall giving. This success is due to our dedicated staff, patrons, and Board. However, we recognize the need for continued growth, and I am confident we will achieve it with your continued support.

Best,

A handwritten signature in cursive that reads "Paula".

Paula Taylor
Chief Marketing and Development Officer, ATC

ptaylor@atc.org

BAREFOOT IN THE PARK



atc
ARIZONA
THEATRE
COMPANY

BY NEIL SIMON
DIRECTED BY MICHAEL BERRESSE



"(Simon) was hot-wired to be funny. Despite how the times have changed since 1965, his jokes still spark instant laughter."

- Let the Show Begin



41
PERFORMANCES

23
TUCSON
18
PHOENIX

3
STUDENT
MATINEES

12,010
ATTENDANCE

7,028
TUCSON
4,982
TEMPE/PHOENIX



TUCSON
09/23/23 - 10/13/23
TEMPLE OF MUSIC AND ART

Season Sponsor
I. Michael & Beth Kasser

TEMPE/PHOENIX
10/20/23 - 11/05/23
TEMPE CENTER FOR THE ARTS

Season Corporate Sponsor
LAVIDGE

Tempe/Phoenix Corporate Sponsor
UnitedHealthcare

Tempe/Phoenix Corporate Production Sponsor
SRP

Tempe/Phoenix Production Support
Spencer Fane LLP

SHULER HENSLEY is
SCROOGE!
 ATC'S NEW HOLIDAY MUSICAL



atc
 ARIZONA
 THEATRE
 COMPANY



“There’s a lot that’s impressive about this production, especially Tony-winning actor Shuler Hensley. His voice is gorgeous, his acting sublime, and he made the journey from miser to altruist smooth and believable.”

- Arizona Daily Star



49 PERFORMANCES	24 TUCSON	3 STUDENT MATINEES	18,835 ATTENDANCE	9,749 TUCSON
	25 PHOENIX			9,086 PHOENIX



TUCSON
 11/07/23 - 12/02/23
 TEMPLE OF MUSIC AND ART

Season Sponsor
I. Michael & Beth Kasser

TEMPE/PHOENIX
 12/09/23 - 12/30/23
 TEMPE CENTER FOR THE ARTS

Season Corporate Sponsor
LAVIDGE

Tucson Individual Production Sponsor
Shirley Estes

Tempe/Phoenix Production Support
Blue Cross Blue Shield of Arizona

Tempe/Phoenix Production Support
Cantor Forensic Accounting, PLLC

INTIMATE APPAREL



atc
ARIZONA
THEATRE
COMPANY

BY LYNN NOTTAGE
DIRECTED BY OZ SCOTT

“Nottage is a poetic writer and a powerful storyteller. ATC gives her play the production it deserves.”

- Arizona Daily Star



38
PERFORMANCES

22
TUCSON
16
PHOENIX

12,960
ATTENDANCE

8,617
TUCSON
4,343
PHOENIX

atc
ARIZONA
THEATRE
COMPANY

TUCSON
01/20/24 - 02/10/24
TEMPLE OF MUSIC AND ART

Season Sponsor
I. Michael & Beth Kasser

TEMPE/PHOENIX
02/16/24 - 03/03/24
TEMPE CENTER FOR THE ARTS

Season Corporate Sponsor
LAVIDGE

Arizona Production Sponsor
Kay and Walter Oliver

Tucson Production Sponsor
Margaret E. Mooney Foundation

VICKI LEWIS
MASTER CLASS



atc
 ARIZONA
 THEATRE
 COMPANY

BY **TERRENCE McNALLY**
 DIRECTED BY **MARCIA MILGROM DODGE**

"Master Class, on stage in Tucson, is a reminder of the need for art. Lewis embodied the spirit of the opera star and made us hang on every word."

- Arizona Daily Star



40
 PERFORMANCES

23
 TUCSON
17
 PHOENIX

2 STUDENT
 MATINEES

11,099
 ATTENDANCE

7,615
 TUCSON
3,484
 PHOENIX



TUCSON
03/02/24 - 03/23/24
 TEMPLE OF MUSIC AND ART

Season Sponsor
I. Michael & Beth Kasser

TEMPE/PHOENIX
03/29/24 - 04/14/24
 TEMPE CENTER FOR THE ARTS

Season Corporate Sponsor
LAVIDGE

Tucson Corporate Production Sponsor
RBC Wealth Management

Phoenix Corporate Production Sponsor
Richard P. Stahl Charitable Fund

Tucson & Tempe/Phoenix Production Partner
Tucson Desert Song Festival

TRUE WEST



atc
ARIZONA
THEATRE
COMPANY

BY SAM SHEPARD
DIRECTED BY JENN THOMPSON



"This is the single greatest piece of live theater I have ever seen ... *True West* is a triumph of acting and storytelling."

- BroadwayWorld



38

PERFORMANCES

22

TUCSON

15

PHOENIX

11,190

ATTENDANCE

7,042

TUCSON

3,648

PHOENIX



TUCSON
04/27/24 - 05/18/24
TEMPLE OF MUSIC AND ART

Season Sponsor
I. Michael & Beth Kasser

TEMPE/PHOENIX
05/24/24 - 06/09/24
TEMPE CENTER FOR THE ARTS

Season Corporate Sponsor
LAVIDGE

Tucson Corporate Production Sponsor
RBC Wealth Management

ATC's New Play Workshops Readings, Festivals

Bringing new plays to life through a dedicated development pipeline allows ATC to showcase fresh work on its stages. During the 2023/2024 Season, ATC presented readings of two new plays, starting with a workshop of the new musical *My Man Godfrey*. With a book by Tony winner Rupert Holmes (*Mystery of Edwin Drood*) and music and lyrics by Mark Hollman (*Urinetown*), this production was directed by Matt August (ATC's Artistic Director).

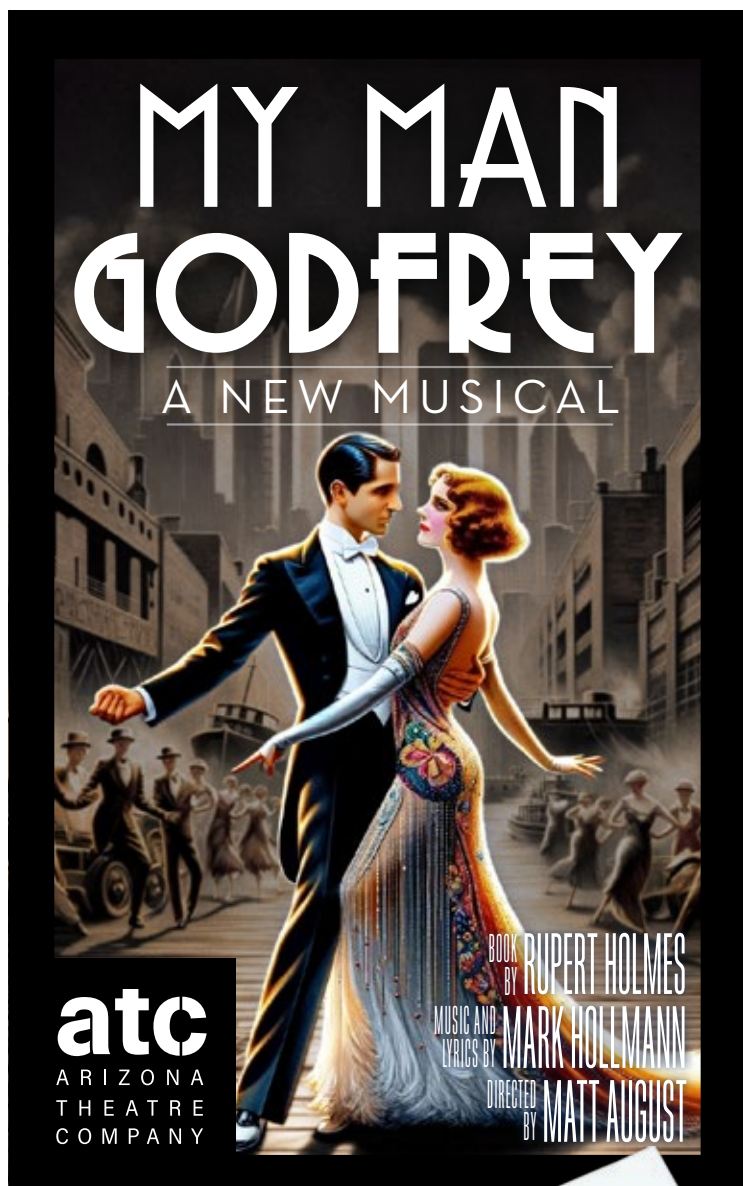
This workshop was a collaboration with Arizona State University. The cast included 11 Actors' Equity Association artists, six non-equity artists, and seven ASU interns, featuring top musical theatre talent from Metro Phoenix and two lead performers from out of town. Additionally, two local musicians, a bass player and a percussionist, contributed to the workshop.

This workshop provided the creative team with a valuable opportunity to fine-tune the script and score in anticipation of a potential full production in ATC's 2025/2026 Season. The audience, consisting of VIPs, donors, and potential investors, enjoyed a unique behind-the-scenes look at the intricate process of developing a musical theatre production.

My Man Godfrey is a musical set in 1930s New York, where a quirky socialite hires a homeless man to be her family's butler, only to fall in love with him. But who is he really? This story is celebrated as one of the best Screwball Comedies ever, offering a hilarious journey through the antics of one of Manhattan's craziest society families.

Tempe/Phoenix Individual Production Sponsor

Enid and Mike Seiden



THE NUDE BY DAVID A. TUCKER II

The second event, an unstaged reading of *The Nude* by David A. Tucker II, is part of the Inaugural **National Latine Playwrights Award and Festival** took place on June 14 at Tempe Center for the Arts. The play was directed by Micha Espinosa, and the Festival Director was Elaine Romero. The reading included **4 Actors Equity Association artists**.

The Nude follows a struggling artist, his investment-savvy girlfriend, a rival painter, and an ambitious gallery owner as they find their lives and work intertwined in more ways than one in this dark art-world comedy.

THE NUDE
by David A. Tucker II

ATC's National Latine Playwrights Award & Festival



Established in 1995, Arizona Theatre Company's National Latine Playwrights Award (NLPA) is unique in its longevity and prescience. Under the leadership of ATC Playwright-in-Residence Elaine Romero, the award continues to create a greater awareness of historically excluded Latine writers' stories. After over a quarter-century of recognizing many outstanding works by Latine playwrights who have achieved remarkable success throughout the country, the award in 2024 evolved into the Latine Playwrights Award & Festival. ATC honored and presented the finalist's work with a panel discussion followed by the play reading of *The Nude*, and an awards ceremony honoring playwright David A. Tucker II at Tempe Center for the Arts in June 2024.



David A. Tucker II

David A. Tucker II has had several plays developed at theaters across the nation. His theatrical works include *Smoke* (2018 O'Neill Theater Conference Finalist and 2018 AITAF Bridge Award Finalist), *The Nude* (winner of Arizona Theatre Company's National Latine Playwrights Award), *Veils*, *Persistence of Vision*, *Baghdad* (about his experiences commanding a military unit in Iraq), *Under the Skin*, and *North Wind Blowin'* (Chicago Dramatists' 2006 Many Voices Project). *The Nude* kicked off Arizona Theatre Company's inaugural National Latine Playwrights Award & Festival.

Growing up in a bicultural family of Mexican/Anglo descent, Tucker's plays often explore collisions of race, culture, and political systems. Since 2008, he has been teaching creative writing to wounded military veterans and their caregivers through the Writers Guild Initiative.

NLPA SUPPORTERS AND SPONSORS

2023/2024 NLPA SPONSOR



PARTNERS

ARIZONA HISPANIC CHAMBER
OF COMMERCE

PHOENIX ART MUSEUM

XICO

SUPPORTED BY

TEMPE CENTER FOR THE ARTS

SEASON SPONSOR

I. MICHAEL & BETH KASSER

CORPORATE SEASON SPONSOR

LAVIDGE



SAVE THE DATE

ARIZONA THEATRE COMPANY'S 2023 GALA

FOLLIES: GLITZ, GLAMOUR, AND THE GOLDEN AGE



HONORING 2023 GEORGIE AWARD RECIPIENTS

SUSAN AND JEFFREY REIN

AND

TONY AWARD-WINNING DIRECTOR, LYRICIST, AND PRODUCER

JACK O'BRIEN

atc
ARIZONA
THEATRE
COMPANY

AT THE TEMPLE OF MUSIC AND ART
SATURDAY,
OCTOBER 14, 2023, 5:00 PM



ATC's Gala: Follies was one of the most memorable events, celebrating the power of live theatre with Georgy Award honorees Susan and Jeffrey Rein and the incomparable Jack O'Brien.

290 | **284,216**
ATTENDANCE | MONEY RAISED

"We can go to a film; we can turn on the television. There is a world of entertainment out there. But if you happen to like the theatre, there's really nothing like it. Its lavish and it's in front of you and you're not in control and you don't know if it's going to work or not. But when it does, on those nights when something truly magical happens, you are transformed. And we come back and back for the promise that it will. You make a difference."

- Jack O'Brien, 2023 Georgy Award Recipient



Fred & Jean Shaulis



Education



"I have taken my classes to several matinees ... we love what ATC offers and the theater experience is always wonderful for my students."

- Elena Malovich, Salpointe Catholic High School

Arizona Theatre Company provides area schools with educational opportunities for free play tickets and learning materials. Many of these schools are Title I schools with diverse enrollment. Often, this is the only opportunity these children have to experience the performing arts.

- Student Matinees** allow us to share the live theatre experience at low or no cost to young people throughout Arizona. The learning doesn't stop when the curtain comes down. A post-show discussion with members of the cast and ATC staff follows each Student Matinee performance.
- Teacher Preview Night** is an opportunity for educators to preview a production for free before their school group attends the Student Matinee performance (Value \$66,342).
- Study Guides** are informational packets teachers and students may reference before and/or after attending a play. These essential educational guides provide pre- and post-show discussion questions, a glossary of terms, historical context, and group activities for students to engage with.

3,242 students served
 1,406 TEMPE
 1,836 TUCSON

55 Title I schools served
 22 TEMPE
 33 TUCSON

69 Overall schools served
 30 TEMPE
 39 TUCSON

3,503 students and chaperones attended Student Matinees
 1,539 TEMPE
 1,986 TUCSON

8 student matinees
 4 TEMPE
 4 TUCSON

Partnerships

ATC strives to do all we can to connect to our local communities. Find us at various events, join us for one of our Community Nights or Pride Nights, and catch a pre-show conversation! We put our artists and audiences at the heart of all we do and encourage conversation beyond the theatre walls.



CURRENT & UPCOMING PARTNERSHIPS:

- | | | | |
|---|--------------------------|---|---------------------------|
| African American Museum of Southern Arizona | Bookmans | The Loving Library | Tempe Center for the Arts |
| Arizona Citizens for the Arts | Bra Spa | Make Way for Books | Tempe Diablos |
| Arizona Opera | Brick Road Coffee | One-n-ten | Tempe Marketplace |
| Arizona State University | City of Tempe | Opera Guild of Southern Arizona | Tempe Tourism Office |
| Arizona Tourism Office | Den Walls Films | Phoenix Pride | Tucson Jazz Festival |
| ASU Gammage | Desert Leaf Magazine | Pima College | United Colours of Arizona |
| Athletico | Desert Voices | Reveille | University of Arizona |
| Banner Alzheimer's Institute (BAI) | Downtown Tempe Authority | Scottsdale Fashion Square | Visit Phoenix |
| Big Brothers Big Sisters of Central Arizona | IBT's | SAAF (Southern Arizona Aids Foundation) | Visit Tucson |
| | Kobalt | Stacey's at Melrose | |
| | LAVIDGE | | |
| | Lead Guitar | | |

CHAMBER MEMBERSHIPS:

- | | | |
|------------------------|----------------------------------|-----------------------------|
| Green Valley Sahuarita | Greater Phoenix | Visit Phoenix |
| Marana | Tempe | Valley Young Professionals. |
| Oro Valley | Mesa | |
| Tucson Metro | Greater Phoenix Equality | |
| Tucson LGBT | AZ Hispanic Chambers of Commerce | |
| Tucson Hispanic | Visit Tucson | |

54 | TOTAL PARTNERSHIPS

ATC Hype Squad

Hype Squad is Arizona Theatre Company's group of outreach ambassadors. Hype Squad plays an integral role in organizing outreach festivals, events, and ATC functions where the team works to spread ATC's mission, vision, and values. Hype Squad members are well-versed in institutional knowledge about our shows, events, and community enrichment activities.



Community Outreach

Arizona Theatre Company annually attends over 25 events in the Tucson and the Tempe/Phoenix metropolitan areas, which include Tucson Pride Festival, Tucson Festival of Books, Second Sunday on Mill, and the Phoenix Arts Educator Day and Cultural Resource Fair.



Community Night

Arizona Theatre Company offered Community Night for each play in our 2023/2024 season. We know there are many individuals in our community who cannot afford a full-price ticket, so we extend a \$15 ticket online and \$20 at the door offer as a way to make our fantastic season accessible to everyone.

Pride Night

Arizona Theatre Company offered Pride Night for each play in our 2023/2024 season. We welcome our LGBTQIA+ community to see our shows at a discounted price of \$15 in advance, \$20 at the door. ATC has long been committed to inclusivity both on stage and within the organization. Everyone has a place at our theatre and we are proud to celebrate our wonderfully diverse community.

Presence in the Community



ARIZONA DAILY
STAR

ARIZONA PBS

AZPM

ARIZONA
REPUBLIC

COX

DESERT LEAF
FRONTDOORS

KJZZ

ON MEDIA

PHOENIX
MAGAZINE

TUCSON LIFESTYLE



DIGITAL OUTDOOR

ATC had a major presence along 101, 202, and I-10 freeways and at Tempe Center for the Arts, plus Arcadia and Uptown (near Central & Camelback).

Barefoot in the Park – 3 weeks

Scrooge! – 4 weeks

Master Class – 3 weeks

ATC's Cinema Series National Theatre Live

Arizona Theatre Company has exclusive rights in Tucson to share the best plays in British theatre available exclusively on cinema screens presented by National Theatre Live. ATC has presented screenings of National Theatre Live presentations on select Saturdays at the Temple of Music and Art.



National Theatre Live is the National Theatre's groundbreaking project to broadcast the best of British theatre live from the London stage to cinemas across the UK and around the world. Plays are filmed in front of a live theatre audience at the National Theatre in London, optimizing everything for the big screen so it's the next best thing to being there. The actors on stage deliver their performances as they normally would any other night. NTL tailors the position of cameras to capture each production and works closely with technical teams to make sure every element on stage such as lighting, hair, and make-up look fantastic on the big screen.

239
HAMLET
240
FLEABAG
256
GOOD

835

Total Attendance at
Cinema Series For
First Three Viewings

\$9,603

Total Ticket Revenue
for shows to date

\$2,240

Total Bar Revenue
for shows to date

Grand Total Event Revenue
for first three viewings

\$11,843



Notes from our supporters



"As a passionate advocate for the arts, I support Arizona Theatre Company because I believe in its mission to enrich the cultural landscape of our community. Serving on the board allows me to contribute to an organization that fosters creativity, nurtures talent, and brings diverse stories to life on stage. Through my involvement, I aim to ensure that ATC continues to inspire, educate, and connect people from all walks of life. I am particularly dedicated to supporting and inspiring the next generation of artists, theatre lovers, and patrons of the arts across Arizona and beyond, ensuring a vibrant future for our cultural community."

– Joan Sherwood, ATC Board of Trustees



"Arizona Theatre Company productions never disappoint us. ATC's expertise is evident at every level—set design, lighting, sound and of course the actors. We spend almost as much time discussing various aspects of the performance as the show itself. We laugh, we cry, we rejoice, and we're always amazed and entertained."

– Joan Reichard and Jay Glaser, Past ATC Trustees and Current Supporters

Individual Donors

Artistic Angels \$100,000+

I. Michael and Beth Kasser
MaryBeth and Jerry Radke
Susan and Jeffrey Rein

Ovation Circle \$50,000 - \$99,999

Alice and Paul Baker
Kay and Walter Oliver
Enid and Michael Seiden

Spotlight Circle \$25,000 - \$49,999

Anonymous
Shirley Estes
Deanna Evenchik-Brav and Garry Brav
Jean and Fred Shaulis
Richard P. Stahl Charitable Fund

Artistic Director's Circle \$10,000 - \$24,999

Anonymous
Char and Alan Augenstein
Christine and John Augustine
Mary Jan and Paul Bancroft

Denice Blake and John Blackwell
Susan and Brian Boylan
Gloria and Phil Cowen
The Estate of Frank K. Davis
Laura and Michael DiChristofano
Patricia Engels and Dick Medland
Barb and Ted Frohling

Jay Glaser and Joan Reichard
Rob and Laurie Glaser
Jeff Guldner and Sydney Reed
Suzanne and Lester Hayt
Rebecca and Albert Johnson
Julie T. Kasper
Bill Lewis and Rick Underwood
Marcia and Andrew Meyer
Becky and Jack Moseley
Mary and Matthew Palencia
Herschel Rosenzweig
Cathleen and Bill Small Jr.
Nancy Swanson
Emily and Bob Vincent
Michael Willoughby
Linda Wurzelbacher

Producer's Circle \$6,000 - \$9,999

Bruce L. and Lynne Wood Dusenberry
Dr. Mary Jo Ghory
Wendy and Richard Gilman

Ellyn and Jeff Gold
Amanda and Stephen Heitz
Lee and Arthur Herbst
Debra and James Larson
Rosanna Miller
Mallory and Donald Riegger
Susan Thompson

Director's Circle \$4,000 - \$5,999

Anonymous
Kelley and Ken Abrahams
Beverly Arrington
Mara and Keith Aspinall
Mr. A. Frederick Banfield and
Ms. Eileen M. Fitzmaurice
Barbara and Franklin Bennett
Connie and Rodney Boorse
Susan Call
Judy and Dave Crone
Leslie Dashew and Jack Salisbury
The Bill and Donna Dehn Charitable Fund
Drs. Cindy Rankin and Thomas Elliott
Joan Epstein
Peggy Goulding
Hugh Hallman
Nora Hannah and David Dunteman
Cristine and Ed Hansen
Sandy and Ed Holland

Bob and JoAnne Hungate
Brian Jorgensen and Mark Latka
Marta and Steven Ketchel
Teri and Norman Klein
Mary and Paul Koss
Sally and Richard Lehmann
Lori Mackstaller
Sandra Maxfield
Adam James Michael and Manu Srivastava
Caroline and Peter Morse
Patrick J. O'Leary and Karen Yamasaki
Karen Peters and Chris Thomas
Tom and Eileen Rotkis
Carol and Lex Sears
Joan and Robbie Sherwood
Joanne Sibley
Carolyn and John Stuart
Erica and Ross Stutman
Judy Weill
Taryn and Mark Westergaard
James Wezelman and Denise Grusin
Karen and James Wohlgenuth

Opening Night Circle \$3,000 - \$3,999

Jacklyn Connoy and William Maguire
Veronica and Thomas Delgado
Mr. and Mrs. F. Don DeLong
Vicki Fuller and Michael Momon

Robin and John Harris
Mr. and Mrs. Mark Landay
Phil and Nora Mazur
Trudi and Robert Murch
Jennifer and Charles Putney
Trisa and Andrew Schorr

Designer's Circle \$2,000 - \$2,999

Anonymous (2)
Larry R. and Florence A. Adamson
Barbara Bickel
Amy Charles and Steve McMillan
Ginny L. Clements Charitable Trust
Alicia and Jon Crumpton
Norma and Stanley G. Feldman
Margaret and Dennis Fesenmyer
Catherine "Rusty" Foley
Pamela and Thomas Frame
Dr. Ellis F. and Irene Stern Friedman
Rebecca and David Gaspar
Louise and Jim Glasser
Lauren and Michael Gordon
Leslie Hall and Ted Jarvi
Anne and David Hameroff
Sandra and Elliott Heiman
Ann McLaren Helstad
Gary Jackson and Oscar De La Salas
Helen and Robert Jenette

Mack Jones
Drs. George and Maria Knecht
Gina and Phil Koo
Nancy and Kent Kwoh
Gloria Lawrence
Terry McNellis
Barbara Molotsky
Donnasu and Jim Moody
Nina and Brian Munson
Pat and Wayne Needham
Jean and Jordan Nerenberg
Brenda and Jim Rowland
Rita and Steven Schlosser
Ron and Patricia Schwabe
Gerald Schwartz
Ingeborg and Ralph Silberschlag
Karen Thornton
Marlene Tompkins and Jim Pyne
Weegee and Scott Whiteford

Insider \$1,000 - \$1,999

Julie and Wayne Anderson
Jessica L. Andrews and
Timothy W. Toothman
Lori and David August
Marianne Ayres
Lani and Josh Baker
Martha Baron
Carolyn Bass
Rosalie and Al Baumrucker
Frank and Cindy Bennett
Tony and Maria Beram
Susan Berg
Judy Berman
Sandra and Charles Bonstelle
Tyna Callahan and Dimitri Voulgaropoulos
Geraldine Cass
Mr. and Mrs. D. Chavez
Al and Sharyn Chesser
Demion Clinco
Elaine and Sidney Choen
Bruce Covill and Lucia Renshaw
Barbara Cummings
Charles Curtis
Marcia and David Davenport
Barbara Davis
Jane and Ernest Del Rio
Stephen and Ruth Dickstein
Mary Ann and Darryl Dobras
Ms. Anna Don
Tricia and Norman Don
Adrienne Drell and Frank Nitikman
Jacques Dumont
Martha Durkin
Martin and Zarin Felli
Mr. and Mrs. John Francesconi
Jane Gellman
Paul and Carol Gerlach
Angela and Jeffrey Glosser
Cathleen and Thomas Godfrey
Laurie and Chuck Goldstein
Donita Gross
Suzanne "Zippy" Gross
Dr. C. Keith Groty and
Reverend Mary V. Groty
Pam and Stan Hart
Sharon and Louis Hekman
Tom and Sandy Hicks
Judy and Michael Holser
Bob and Susan Johnstone
Leianne Jones
Nathan Joseph
Adrienne Kalyna and Scott Michel
Jamie and Bill Kelley

Tom Kelly
Bruce Kilbride and Lynn Krabbe
Kit and Dan Kimball
Carol and Foster Kivel
Ronald and Ruth Koller
Jane Langenfeld and Duncan Chang
Thomas Large
Laylah and Nathan Douglas
Marianne and Bill Leedy
Janice and Robert Leff
Dr. and Mrs. Martin Levy
Sharon Lewis and Mayor Shanken
Ann Lovell
Anne and Ed Lyman
Janet and Charles Lynn
Thom and Kathy Mansur
Kit and Joan Marrs
Michelle and Joseph Millstone
Phyllis Morgan
Karen Nackard
Douglas Ng
Parviz Nikravesh and Agnes Stahlschmidt
Steven Ratoff
Ann H. Redding
Carole and Ronald Rezetko
Christine and John-Paul Rocznick
Chuck and Terri Roehrick
Drs. Adib and Vivi Sabbagh
Deborah and Marc Sandroff
Suzanne and Lewis Schorr
Marc and Tracy Schwimmer
Mitra Shahi and David Cohen
Cathy Shell
Steve and Shelly Silverman
Evelyn G. and Daniel J. Simon
Sue Tavel
Marcia and Tyler Tingley
Karen and Monty Turner
Tom Warne
Mary and Bill Way
Marion Weber
Janice Wezelman and David Bartlett
Lois Wienshienk
Jana and Mark Wilcke

Patron \$500 - \$999

Anonymous (5)
Joseph Acker
William Ahearn
Gregory Ash and Susan Johnson-Ash
Lyn Ashton and Herbert Stevenson
Carolee and Daniel Asia
Eva Bacal
Pamela and Frank Bangs
Jeannette and Robert Barnes
Clare and Duane Baylor
John Bechman
Dr. Cash and Susanne Beechler
Jeffrey F. Berg and Debra H. Paget Fund
Elizabeth Blair
Michael Bradford and Maikel
Lahera Montero
Jonathan and Carol Bradley
Martha Brightwell
Diane and Donald Bristow
Suzanne and Don Brown
Debbie Goodman-Butler and Patrick Butler
Diana and Jay Caldwell
Linda Carson
Pete Celaya and Charlene Vasquez
Emily Ravits
Dr. Jay and Betty Citrin
Jill and Kipp Clark
Stacey and David Cohen

Jennifer and Jay Cook
Jan Copeland
Lynn Corrigan
Andrea and Harry Crane
Sherry Dailey
Carol Des Cognets
Diane Drewery and Don Wilks
Carrie and Chuck Durham
Ronna Fickbohm and Jeff Willis
Mary Jo Fitzgerald
Jan Olav and Lucille Flaaten
Frank Flasch
Kathy Garrett
Barry Gillaspie
Midge and Gerald Golner
Frank Goodyear
Paulette and Joseph Gootter
Dr. Robert W. Gore
Vicki Gotkin and Edward French
Pamela Grissom
Anjleen and Harry Gumer
Sara and Andrew Gyorko
The Haddock Stanton Foundation
Rita Hagel
Lynnell Gardner MD and
Michael Hamant MD
Ruth Murphy and John Hay
Anne Leary and Bill Hemelt
Bette Henriques
Liz Hernandez
James Herzfeld
Susan Hetherington
Lynn R. Hoffman
Dr. H. Barry Holt and Mrs. Lucy V. Volt
Lisa and Gary Israel
William Jacobs
Caroline Jank
Toni Kane
Guinn and Nate Kappler
Fran and Jeff Katz
Martha and George Kellner
Barbara and Jay Kittle
Karen and Sherwin Koopmans
Lynne Lagarde and Bob Stankus
Arvie and Karen Lake
Katharine and John Lauder
Joan Le Fevre
Ellen and Philip Leavitt
Dr. Alan Levenson and Rachael K. Goldwyn
Lori Levine and Gary Benna
Bertie Levkowitz and Thomas Herz
Jo and Matt Madonna
Ann and George Mavko
Larry and Barbara Nelson
Michael and Patricia Ore
Suzanna and Steve Pangburn
Jane and William Pearson
Clyde and Jane Perlee
Jeanne Pickering and Mike Andrew
Noah Pollock
Sylvia Pozarnsky and Tom Riley
Valerie and Herschel Richter
Drs. Linda Riordan and David Siegel
Denise and Curt Robinson
Donna and Darrell Sabers
Barbara Sattler and Ken Hegland
Patricia and Harry Schlosser
Elizabeth Schulman
Robyn and Edward Schwager
Arleen and Fred Schwartz
Polly and Joe Seeger
Marge Schneider and Ed Shirley
Amy Gittler and Michael Sillyman
John Smith
Rica Spivack

David Steele
Claire Steigerwald
Dan and Jill Stevenson
Olga Strickland
Charles H. Strub
Michael and Jeanne Sturgis
Hugh and Allyn Thompson
Catherine and Bruce Uhl
Lisa Ungar and Robert Fridrich
Gary Waugh
Clifford Webster
Wendy and Elliott Weiss
Mary and John Wilber

Friend \$250 - \$499

Anonymous (11)
Mary Ahrens
Pauline Albert
Susan Anderson-Smith
Marilyn and Greg Anthony
Robin and Kent Batty
Kathleen and Bill Bethel
Betsy Bolding
Ellen Brackman
Sallee Britton
Michael Heimbuch and Mitchell Bunting
Bonnie and David Burnett
Burton Cagen
Jane and William Canby
Michael Candela and Dr.
Marsha Brooks-Candela
Karen and Jim Carlson
Patricia and Jon Carlson
Elaine and Morton Cederbaum
Arlan Colton and Jeff Ramos
Paula and Michael Culbert
James Cummins
Sandy Czachor
Lawrence C. Dennis
Susan and Barclay Dick
Carole and David Drachler
Mary and John Enemark
Gordon Stuart Ewy
Shera Farnham
Nancy and Richard Fintzy
Sarielyn and Sherman Fogel
Cindy and Jerry Foley
Claire Genser
Bruce Gillaspie
Miriam and Richard Glabman
Ann Goldberg
Stephen N. Graff
Jennifer Gross
Ann and Mike Guilfooy
Candy and Jeffery Hazen
Marcia and Gregory Hilliard
Sarah Hiteman
Gerri and Barry Holt
Mary and Thomas Johnson
Pam Johnson
Richard and Shirley Johnson
Joanne and Paul Johnston
Denise Just
Robin and Michael Kaiserman
Louise and Joseph Keane
Lendre and King Kearns
Alan and Cynthia Kempner
Carol and Stephen Klafter
Suzan-Oda and Bill Knese
Michael Kramer
Sally Lanyon and Paul Hawkins
Mickey and Jeff Leonard
Marcia Lindley
Sue Markovich

Sandra Marshall and Gerald Maggiora
Lorraine and Patrick Martin
Shirley and Stanley Matlick
Lauri McCanless
Sandra McNabb
Beth and Marco Mercaldo
Eleanor and George Mink
The Greenleaf/Molberg Family Fund
Virginia and David Morthland
Linda and Donald Mower
Timothy Mulcahy
Alice and Edward Neuwirth
Margie Nicholson
Terence Nordahl
Ben Norton
Jones Osborn and Stephanie Mullins
Susan and Chuck Ott
Esther M. Pasalis
Alyce Pennington
Carol Pierce, M.D. and Kaye Crandall
Kathy and Jack Rife
Alice and Bill Roe
Anne Roediger
Emily Rosenberg Pollock
Quinta and Philip Rosenberg
Shirley and Thom Rossa
Mira and Kent Rossman
Sandra Rutherford
Judy and Michael Schaffert
Eric Scharf
Sally and Robert Schlegel
Dr. Howard and Trudy Schwartz
Julie Karcis and James Seward
Isaac Shaw
Betty Shelby
Bill Sheppard and Range Shaw
Patricia and Mark Smallsreed
Glenn Smith
Joyce and Jim Smith
Richard Snodgrass and Merrie Brucks
Linda Jensen and Richard Snyder
Barbara Soehnen
Jennifer Spencer
Connie Stapleton
Darryl and Helen Stern
Patricia Stewart
Barbara Straub
Laura Sullivan
Gayle A. Traver
Roger Ulrich
Margaret Norem and Rick Unklesbay
Marianne Vanzyll
Hy Kaplan and Sue Vardon
Gerald and Naomi Weiner
Edwin Zimmermann

Corporate, Foundation, and Government Partners

Artistic Angels Circle \$100,000+

LAVIDGE
Virgina G. Piper Charitable Fund

Ovation Circle \$50,000 - \$99,999

Margaret E. Mooney Foundation
The Shubert Foundation

Spotlight Circle \$25,000 - \$49,999

APS
Arizona Commission on the Arts
Flinn Foundation
HS Lopez Family Foundation
SRP

Artistic Director's Circle \$10,000 - \$24,999

Ameriprise Financial
Arts Foundation for Tucson and
Southern Arizona
The Connie Hillman Family
Foundation
National Endowment for the Arts
RBC Wealth Management
Scottsdale Fashion Square
United Healthcare of Arizona, Inc

Producer's Circle \$6,000 - \$9,999

City of Tempe
The John and Helen Murphey
Foundation

Director's Circle \$4,000 - \$5,999

Blue Cross Blue Shield of Arizona
Desert Leaf Magazine
Gila River Hotel & Casinos
Margaret T. Morris Foundation
National Bank of Arizona
Spencer Fane LLP
Tucson Desert Song Festival
Tucson Media Partners

Opening Night Circle \$3,000 - \$3,999

Cantor Forensic Accounting,
PLLC
Cox Charities
Phoenix Pride

PICOR Charitable Foundation

Designer's Circle \$2,000 - \$2,999

Kellenberger + Tollefson Center
Long Realty Cares Foundation
The Stocker Foundation
Withtoft Apprill Family Founda-
tion

Insider \$1,000 - \$1,999

Ben Walls Films
Sand Reckoner
The Gadsden Company
The Gordon Foundation

Patron \$500 - \$499

Blackbaud Giving Fund
The Learning Curve
Margaret Mellon Hitchcock
Foundation

Friend \$250 - \$499

Actor's Equity Foundation, Inc.
The Benevity Community Impact
Fund
Paypal Giving Fund



Donor Advised Funds

Ken and Kelley Abrahams
Charitable Fund at The American
Gift Fund

Dan and Nancy Alcombright
Fund at Schwab Charitable

Daniel Asia Fund at Schwab
Charitable

BD2 Donor Advised Fund at
the Community Foundation for
Southern Arizona

Berg Charitable Gift at Fidelity
Charitable

Bolduc Family Charitable Fund at
Schwab Charitable

Caldwell Family Charitable Fund
at Schwab Charitable

Frances Chapin Foundation
Philanthropic Fund of United Way
of Tucson and Southern Arizona

Amy Charles and Steve McMillan
Donor Advised Fund at The
Jewish Community Foundation of
Southern Arizona

John and Judy Danilovs
Charitable Fund at Fidelity
Charitable

Dennis and Marla Daugherty
Charitable Fund at Schwab
Charitable

Bill and Donna Dehn Charitable
Fund of the Ayco Charitable
Foundation

DiChristofano Family Fund at
Morgan Stanley GIFT

Anna Don Belton Charitable
Fund at American Endowment
Foundation

Adrienne Drell and Frank
Nitikman Fund at National
Philanthropic Trust

Amy and Robert Etzkorn
Charitable Fund at Schwab
Charitable

Michael and Evelynn Freed
Charitable Fund at Schwab
Charitable

Kathy Garrett Giving Fund at
Fidelity Charitable

Jane Gellman Donor Advised
Fund of the Jewish Community
Foundation of Milwaukee Jewish
Federation, Inc.

Marilyn Gerber Donor Advised
Fund at Schwab Charitable

Janet Gerdes Giving Account at
Fidelity Charitable

Robert and Laurie Kaye Glaser
Donor Advised Fund at The
Jewish Community Foundation of
Southern Arizona

Thomas Godfrey Charitable Fund
at Fidelity Charitable

Debbie Goodman and Patrick
Butler Donor Advised Fund at
Schwab Charitable

Gordon Family Fund at Fidelity
Charitable

Greenleaf/Molberg Family Fund
at Schwab Charitable

Guilfooy Family Charitable Fund at
Schwab Charitable

Heid Family Charitable Fund at
Fidelity Charitable

Mack Jones Donor Advised Fund
at Schwab Charitable

Michael and Robin Kaiserman
Philanthropic Fund of the Jewish
Community Foundation of
Southern Arizona

Karcis and Seward Giving Fund
at Fidelity Charitable

Carol and Foster Kivel Family
Fund at the Community
Foundation for Southern Arizona

Phillip and Gina Koo Family
Charitable Fund at Fidelity
Charitable

Kwoh Family Charitable Fund at
Vanguard Charitable

Ann and Luis Lancero Donor
Advised Fund at Fidelity
Charitable

Sally Lanyon Donor Advised
Fund at The Jewish Community
Foundation of Southern Arizona

Latka Jorgensen Charitable Fund
at Schwab Charitable

Robert B. Leff and Janice M. Leff
Fund at the Arizona Community
Foundation

Bertie and Jack Levkowitz Donor
Advised Fund at the Jewish
Community Foundation of
Southern Arizona

Charles Lynn and Janet Lynn
Donor Advised Fund at Schwab
Charitable

Meyer Family Foundation at
Morgan Stanley GIFT

George and Eleanor Mink Family
Fund at Schwab Charitable

Barbara D. Molotsky Fund at
Fidelity Charitable

Patrick J. O'Leary Foundation and
Fidelity Charitable

Pozarnsky/Riley Charitable Fund
at Fidelity Charitable

Barbara L. Provus Charitable Fund
at Schwab Charitable

Rein Family Fund at Schwab
Charitable

Valerie and Herschel Richter
Donor Advised Fund at the
Jewish Community Foundation of
Greater Phoenix

Roehrick Family Fund at Fidelity
Charitable

Dr. Herschel and Jill Rosenzweig
Donor Advised Fund at Jewish
Community Foundation of
Southern Arizona

Rotkis Charitable Fund at
Schwab Charitable

Deborah and Marc Sandroff
Donor Advised Fund at Morgan
Stanley

Shirley Family Charitable Fund at
Fidelity Charitable

Samuel Denmark Family Fund at
Fidelity Charitable

Lex and Carol Sears
Philanthropic Fund at United Way
of Tucson and Southern Arizona

Daniel J. and Evelyn G. Simon
Donor Advised Fund of the
Jewish Community Foundation of
Greater Phoenix, Inc.

Smallsreed Family Fund at
Fidelity Charitable

Richard P. Stahl Charitable
Fund at American Endowment
Foundation

Stonewall Foundation Fund
at Community Foundation for
Southern Arizona

Tavel Family Fund at Fidelity
Charitable

Tyler and Marcia Tingley
Donor Advised Fund at Fidelity
Charitable

Gerald Weiner Designated
Fund at the Jewish Community
Foundation of Greater Phoenix

Elliott and Wendy Weiss
Charitable Gift Fund at Schwab
Charitable

Westergaard Giving Fund at
Fidelity Charitable

James D. Wezelman Donor
Advised Fund at the Jewish
Community Foundation of
Southern Arizona

Zimmermann Family Fund at
Fidelity Charitable Fund

LEGACY SOCIETY

**Honors those friends of ATC who have established a gift through a bequest,
trust arrangement, or other estate plan provision.**

Anonymous*

Anonymous

Jessica Andrews and Timothy W. Toothman

Cameron and Mary Artigue

Helen and Robert Begam*

Nathaniel and Suzanne Bloomfield

Dr. and Mrs. James F. Blute, III

Betsy Bolding

Thomas Chapman

Steven Cohen and Michael Godnick

Jacklyn Connoy and William Maguire

Len* and Doris Coris

The Estate of Frank K. Davis*

Slivy Edmonds*

Pat Engels

Bob and Nancy Eschrich

Carol Fink

Michael O. Flatt*

Ted and Barb Frohling

Harry and Lois Garrett

Dr. Mary Jo Ghory

Chester and Ann Goldberg*

Mr. Terrance M. Hanson

Mr. and Mrs. Edward J. Harrison

Andrew F. Holtz

Jacqueline Hufford-Jensen
and Gregory Kroening

I. Michael and Beth Kasser

Dr. Philip Keller*

Bill and Kathy Kinney

Gregory Kroening

Maxine and Jonathan Marshall*

Joan A. Morris

Peggy and Gerry* Murphy

Terry and Jerry Neuman

Don* and Peg Nickerson

Martha and Terry Allen Perl

Endowment for the Arts

Ronald Robinette and Sharon Roediger

Arnold and Carol Rudoff

Robert V. Schauer and Melvin E. Mounts*

William C.* and Deborah Chisholm Scott

F. William Sheppard

Daniel J. and Evelyn G. Simon

Richard P. Stahl*

Robert* and Shoshana Tancer

Marlene Tompkins and James Pyne

Roy Van Note

Virginia A. Weise*

Mark and Taryn Westergaard

Maggie White

Richard H.* and Linda Whitney

* deceased

ADDITIONAL HIGHLIGHTS



Shuler Hensley and Youth Performers from *Scrooge!* Singing the National Anthem at Arizona Cardinals Game.



City Manager Rosa Inchausti, Council member Berdetta Hodge, Vice Mayor Jennifer Adams, Mayor Corey D Woods, Executive Director Geri Wright, Kasser Family Artistic Director Matt August, Deputy Community Services Director - Arts & Culture Brendon Ross, Trustee Char Augenstein, Board Chair Pat Engels at ATC's Ribbon cutting at Tempe Center for the Arts.



ATC Day at the Capital - Proclamation (February 15, 2024)

Trustee Karen Wohlgemuth, Chief Development & Marketing Officer Paula Taylor, Executive Director Geri Wright, Representative & Trustee Analise Ortiz, Kasser Family Artistic Director Matt August, Trustee Char Augenstein at the Proclamation of ATC DAY at the Capital.

2023/2024 SEASON ARTISTS

PLAYWRIGHTS • LESLIE BRICUSSE (S) •
TERRENCE MCNALLY (MC) • LYNN
NOTTAGE (IA) • SAM SHEPARD (TW) • NEIL

SIMON (BIP) • DAVID TUCKER (N) • MARK HOLLMAN (N) • RUPERT HOLMES (MMG) • **DIRECTORS/CHOREOGRAPHERS** • MATT
AUGUST (S) • MICHAEL BERRESSE (BIP) • MARCIA MILGROM DODGE "MMD" (MC) • BRENT GIBBS (TW) • SPENCER LIFF (S) • WALTER
"BOBBY" MCCOY (MC) • ALAN J. PLADO (S) • OZ SCOTT (IA) • JENN THOMPSON (TW) • STEVEN GROSS (MMG) • MICHA ESPINOSA (N)
• WALTER "BOBBY" MCCOY (MC) • ALAN J. PLADO (MC) • **DESIGNERS** • ROBERT J. AGUILAR (BIP) • JASON ARDIZZONE-WEST (S)
• ELIZABETH CAITLIN WARD (S) • MATHEW DEVORE (BIP) (MC) • ALEXANDER DODGE (IA) (TW) • KISH FINNEGAN (BIP) • EDWARD E.
HAYNES, JR. (MC) • DANIEL PERELSTEIN JAQUETTE (IA) • KAREN PERRY (IA) • BRAD PETERSON (S) • Yael LUBETZKY (MC) • TIM
MACKABEE (BIP) • PAUL MILLER (S) • CRICKET S. MYERS (S) • DAVID O (S) • PHILIP ROSENBERG (TW) • ANGELA STEINER (TW) •
VICTOR EN YU TAN (IA) • FABIO TOBLINI (MC) • KEN TRAVIS (TW) • ALEJO VIETTI (TW) • SHANE WALTZ (MMG) • MARY MORGAN (MMG)
• **STAGE MANAGERS** • WESLEY APFEL (IA) • GLENN BRUNER (BIP) • ASHLEIGH DAVID (MC) • AMBER R. DETTMERS (TW) •
DONAVAN DOLAN (S) • MYKEL MARIE HALL (BIP) (IA) (TW) • MOLLIE HEIL (MC) • KEVIN JINGHONG ZHU (S) • RAFI LEVAVY (S) •
JAKOB W. PLUMMER (BIP) • BRIG JOHNSON (MMG) • EMMA PRANGE (MMG) • TANNER GURULE (N) • **OTHER CREATIVE TEAM/
ADDITIONAL STAFF** • CLAYTON DOMBACH (IA) • HAROLD DIXON (S) • BROOKE FORD (S) • CHRISTIE KERR (IA) • LINDSAY
MCDONALD (IA) • SEAN SANFORD (S) • AMY SUTTON (S) • AVA SPANIER (S) • CORY BURNS (MMG) • PHIL COLEMAN (MMG) • MARISSA
BARNATHAN (MMG) • DANE FUTRAL (MMG) • CLAIRE DETOFF (MMG) • ELAINE ROMERO (N) • **ACTORS** • KARMINE ALERS (S) •
DANNY BASS (S) (IA) • GEOFFREY F. BELLISTON (S) • BENI BERMUDEZ (S) • TRACEY N. BONNER (IA) • HARRY BOUVY (BIP) •
AARON CAMMACK (S) (IA) • DAWN CANTWELL (IA) • TONY CASTELLANOS (S) • LYDIA CORBIN (IA) • DANIELA DELAHUERTA (S)
• TRISHA DITSWORTH (S) • ANA DRAGOVICH (IA) • MATHEW FEDOREK (S) • KANISHA MARIE FELICIANO (MC) • ZACK FINE (TW)
• BRENDA JEAN FOLEY (S) • JACQUELYN FUCHS (S) • MARSHALL F. GLASS (BIP) • RACHEL GOLD (MC) • STEWART GREGORY (S)
• RHETT GUTER (TW) • SHULER HENSLEY (S) • SARAH HOLLIS (IA) • JOE JONES (BIP) • ALEXANDRIA JOY (S) • COREY JONES (IA) •
HOLDEN JONES (S) • JOHN KATZ (S) • KYRA KENNEDY (BIP) • KATHRYN KELLNER BROWN (MC) • LILLIE LANGSTON (S) • VICKI
LEWIS (MC) • BROOKLYN MARTIN (S) • SAUNDRA MCCLAIN (IA) • JESSE MERLIN (S) • CYNTHIA MEIER (TW) • TRENT MILLS (MC) •
MAX MORGAN (S) • GEMMA PEDERSEN (S) • HAIDEN PEDERSON (BIP) • TANISHA J. RAY (IA) • VICTOR RYAN ROBERTSON (MC)
• J SAVAGE (S) • GAYTON SCOTT (BIP) • DENNIS TAMBLYN (S) (MC) (TW) • ALISON THOMAS-VISGAR (S) • GEOFFREY WADE (TW) •
ANNALISE WEBB (MC) • TYLER LANSING WEAKS (BIP) • AMELIA WHITE (TW) • MADELYN WHITEHEAD (S) • SARAH WIECHMAN (S)
• CHRIS WILL (S) • GRETCHEN WIRGES (BIP) • MATHEW ZIMMERER (BIP) • KEVIN EARLEY (MMG) • STEPHANIE STYLES (MMG) • D.
SCOTT WITHERS (MMG) • LUCAS COATNEY-MURRIETA (MMG) • RUSTY FERRECANO (MMG) • DEBBIE ROSENTHAL (MMG) • TRISHA
DITSWORTH (MMG) • ALEXANDRIA JOY (MMG) • JOHN KNISPEN (MMG) • BRENDA JEAN FOLEY (MMG) • AMY JOY HALLIDAY (MMG) • SETH
TUCKER (MMG) • WESLEY BROADSTREET (MMG) • KATIE MCFADZEN (MMG) • CASSIE CHILTON (MMG) • GABIRELLE GERMON (MMG) •
GRACE ROGER (MMG) • BRI SIEMINSKI (MMG) • JOSE ANTONIO GUEVARA (MMG) • TOBY YATSO (MMG) • GUSTAVO A. FLORES (N)
• CARLOS LEE HALL (N) • ZULEYL CASTRO (N) • MARIA AMOROCHO (N) • GIOVANNI DELGADO FERREIRA (N) • **MUSICIANS** •
GREG ARMSTRONG (S) • MEGHAN CARAMELLA (S) • MELL D. CSICSILA (S) • ANDRIA FENNIG (S) • LEE GARDNER (S) • ALEX
GUTIERREZ (S) • MIKE PADILLA (S) • RUSSELL RONNEBAUM (S) • LIZ SPENCER (S) • KEVIN EARLEY (MMG) • NATHAN BENUTEZ (MMG)
• DANIEL BARSETTI-NERLAND (MMG) • **CASTING DIRECTORS** • RICHIE FERRIS (IA) (MC) • GEOFF JOSSELSO (BIP) • KATJA
ZAROLINSKI (BIP) • MICHAEL DONOVAN (IA) (MC) • KELLY GILLESPIE (TW) • **OVERHIRE** • TORI ADAM • CHENOA BAKER • CRYSTAL
BOLES* • MARIAH BOWERS • CALEB BROWN • MARCELLA CABRERA-FLORES • SHELBY CANTRELL • EMILY CARTAGINE •
KOLETON COX • EMMA DEVORE • JILL ELIEL • TOBIAS FALTER* • KISH FINNEGAN • LISA
GOERING • NIK GOOD • KYRA JONES-WILLIAMS • LUIS LOZA • LEO MARTINEZ • BOBBY
MAYWEATHER* • ANTHONY MULDROW • BECCA MCCULLOUGH • ASHLEIGH MCGILL
• AMBER MOLDREM • TONY NEEDHAM • CAROLINE PRICE • NANALEE RAPHAEL •
JUDY SHIVACK • BENJAMIN SMITH* • ARIEL STEINBERG* • RAQUEL STEWART •
BARBARA TANZILLO • EMA VALENCIA • SHANE WALTZ • SARAH WILLWATER

203

TOTAL HIRES

119

IN STATE

84

OUT OF STATE

BIP = Barefoot in the Park S = Scrooge IA = Intimate Apparel MC = Master Class TW = True West MMG = My Man Godfrey TN = The Nude

As the only Arizona member of the League of Resident Theatres, Arizona Theatre Company hires according to all LORT agreements with the following unions: Actors Equity Association (AEA), Stage Directors and Choreographers Society (SDC), United Scenic Artists (USA), and International Alliance of Theatrical Stage Employees (IATSE). * Member of IATSE Local 336 * Member of IATSE Local 415

ARIZONA THEATRE COMPANY

atc

ARIZONA
THEATRE
COMPANY

2024/2025

SEASON 57

DIAL M FOR MURDER



atc
ARIZONA
THEATRE
COMPANY

ADAPTED BY JEFFREY HATCHER
FROM THE ORIGINAL BY FREDERICK KNOTT
DIRECTED BY MICHAEL JOHN GARGES

TUCSON: 09/22/24 - 10/12/24
TEMPE: 10/19/24 - 11/03/24

SCROOGE!

ATC'S HOLIDAY MUSICAL



atc
ARIZONA
THEATRE
COMPANY

BOOK, MUSIC, AND LYRICS BY LESLIE BRICUSSE
DIRECTED BY MATT AUGUST

TUCSON: 11/03/24 - 11/30/24
TEMPE: 12/07/24 - 12/28/24

BLUES IN THE NIGHT

FEATURING THE MUSIC OF
BESSIE SMITH, DUKE ELLINGTON, JOHNNY MERCER, HAROLD ARLEN,
ALBERTA HUNTER, JIMMY COX, IDA COX, AND MORE!



atc
ARIZONA
THEATRE
COMPANY

CONCEIVED AND
ORIGINALLY DIRECTED BY SHELDON EPPS
ORIGINAL VOCAL ARRANGEMENTS
AND MUSICAL DIRECTION BY CHAPMAN ROBERTS
REORCHESTRATIONS AND ADDITIONAL
VOCAL ARRANGEMENTS BY SY JOHNSON
DIRECTED BY RICARDO KHAN

TUCSON: 01/26/25 - 02/15/25
TEMPE: 02/22/25 - 03/09/25

BOB & JEAN

A LOVE STORY



atc
ARIZONA
THEATRE
COMPANY

BY ROBERT SOHENKKAN
DIRECTED BY MATT AUGUST

TUCSON: 03/23/25 - 04/12/25
TEMPE: 04/19/25 - 05/04/25

Ms. Holmes & Ms. Watson

- Apt. 2B



atc
ARIZONA
THEATRE
COMPANY

BY KATE HAMILL
DIRECTED BY MARCIA MILBROM DODGE

TUCSON: 05/18/25 - 06/07/25
TEMPE: 06/14/25 - 06/29/25