

# DIAL M FOR MURDER



**atc**

ARIZONA  
THEATRE  
COMPANY

2024/2025



OCTOBER 19 - NOVEMBER 3, 2024

## ARIZONA THEATRE COMPANY

**MATT AUGUST**  
KASSER FAMILY ARTISTIC DIRECTOR

**GERI WRIGHT**  
EXECUTIVE DIRECTOR

# DIAL M FOR MURDER

ADAPTED BY  
**JEFFREY HATCHER**

FROM THE ORIGINAL BY  
**FREDERICK KNOTT**

CO-PRODUCED WITH  
**PIONEER THEATRE COMPANY**  
KAREN AZENBERG, ARTISTIC DIRECTOR | ADRIAN BUDHU, MANAGING DIRECTOR

SCENIC DESIGNER  
**JAMES NOONE**

COSTUME DESIGNER  
**PATRICK HOLT**

LIGHTING DESIGNER  
**TOM ONTIVEROS**

SOUND DESIGNER  
**DANIEL PERELSTEIN JAQUETTE**

FIGHT DIRECTOR  
**BRENT GIBBS**

STAGE MANAGER  
**DARLENE MIYAKAWA\***

ASSISTANT STAGE MANAGER  
**MYKEL MARIE HALL\***

CASTING DIRECTOR  
**JUDY BOWMAN**

DIRECTED BY  
**MICHAEL JOHN GARCÉS**

Originally commissioned and produced at The Old Globe, Barry Edelstein, Erna Finci Viterbi Artistic Director, Timothy J. Shields, Managing Director

"Dial M For Murder (Hatcher)" is presented by arrangement with Concord Theatricals on behalf of Samuel French, Inc.  
[www.concordtheatricals.com](http://www.concordtheatricals.com)

\*Member of Actors' Equity Association, the Union of Professional Actors and Stage Managers in the United States.

CORPORATE PRODUCTION SPONSOR: **RICHARD P. STAHL CHARITABLE FUND**

CORPORATE PRODUCTION SPONSOR: **LAVIDGE**

2024/2025 SEASON SPONSOR: **I. MICHAEL AND BETH KASSER**



## CAST (IN ORDER OF APPEARANCE)

MARGOT WENDICE ..... AWESTA ZARIF\*  
MAXINE HADLEY ..... LUCY LAVELY\*  
TONY WENDICE ..... DAN DOMINGUES\*  
LESGATE ..... AARON CAMMACK\*  
INSPECTOR HUBBARD ..... PETER HOWARD\*

\*Member of Actors' Equity Association, the Union of Professional Actors and Stage Managers in the United States.

**Setting: The living room of the Wendice flat in London, 1952**

**Time:**

### Act One

Scene One - A Friday evening in September.  
Scene Two - Saturday evening.  
Scene Three - Later that night.

### Act Two

Scene One - The next morning.  
Scene Two - A few months later. Afternoon.

**THERE WILL BE ONE 15-MINUTE INTERMISSION**

## UNDERSTUDIES

TONY WENDICE - AARON CAMMACK; MAXINE HADLEY - ANA DRAGOVICH;  
LESGATE / INSPECTOR HUBBARD - SAM MCINERNEY; MARGOT WENDICE - CHELSEY JEAN SMITH

## ADDITIONAL PERSONNEL

DIALECT COACH  
HAROLD DIXON

ASSISTANT DIRECTOR  
LILA RACHEL BECKER

On this original Arizona Theatre Company production, the ATC Production Staff is responsible for scenic construction, costume construction, lighting, projections, sound, props, furniture, wigs, scene painting, and special effects.

**Cell phones and other devices that make a noise or emit light can greatly disturb your fellow audience members and the performers. PLEASE TURN THEM OFF before the performance.**

THE VIDEOTAPING OR MAKING OF ELECTRONIC OR OTHER AUDIO AND/OR VISUAL RECORDINGS OF THIS PRODUCTION AND DISTRIBUTING RECORDINGS OR STREAMS IN ANY MEDIUM, INCLUDING THE INTERNET, IS STRICTLY PROHIBITED, A VIOLATION OF THE AUTHOR(S)'S RIGHTS AND ACTIONABLE UNDER UNITED STATES COPYRIGHT LAW. FOR MORE INFORMATION, PLEASE VISIT:  
<https://concordtheatricals.com/resources/protecting-artists>

## LETTER FROM BOARD CHAIR PAT ENGELS

As Chair of the Board, it is my absolute pleasure to welcome you back for the start of our 57th season! We are thrilled to open this new season with a new take on a classic thriller, *Dial M For Murder*.

This season marks over 56 years of bringing world-class theatre to Arizona. ATC has been a cornerstone of our community for generations, offering captivating stories and providing a platform where both national and local talent can shine. As a nonprofit, our success relies on the unwavering support and generosity of individuals like YOU, who believe in the transformative power of the arts.

Thanks to your support, we are able to create exceptional theatrical experiences that inspire audiences, reach thousands of students each year, and engage with our communities in meaningful ways. Your commitment makes a tangible difference, allowing us to continue delivering the kind of top-quality theatre that has become synonymous with ATC.

*Dial M For Murder* promises to deliver the suspense, intrigue, and edge-of-your-seat thrills that have made it a beloved classic of stage and screen. Our talented team of artists and staff, led by our extraordinary Kasser Family Artistic Director Matt August and Executive Director Geri Wright, has been hard at work to ensure that this production is nothing short of spectacular.

As we embark on this new season, our steadfast commitment to enriching our community



through the power of live theatre remains. Whether you're a longtime supporter or joining us for the first time, we are honored to have you with us as we bring these stories to life.

Thank you for being part of the ATC family. Here's to another season of unforgettable performances, shared experiences, and the magic of live theatre. Enjoy the show!

With deep appreciation,

A handwritten signature in cursive script that reads "Pat Engels". The ink is dark and the signature is fluid.

Pat Engels  
Board Chair

# LETTER FROM KASSER FAMILY ARTISTIC DIRECTOR MATT AUGUST

Welcome Back!

As we launch into a new season filled with plays that excite the imagination, that move to the rhythms of our dreams, that will let us love and laugh together, it's important that we take stock of where we are ... as a company, as a community, and as a country.

Tempe Center for the Arts opened its doors in 2007 and has stood as the anchor of culture and community for Tempe ever since. Last season, the City of Tempe shared this building with ATC to be our metropolitan Phoenix home to bring essential storytelling to the community, to be a place where tough ideas could be wrestled with, where emotions could be vicariously experienced and purged through visceral performances, and where imaginations could be ignited through the magic of illuminated darkness and stage illusion. The experience inside the theatre made for more emotionally aware, more compassionate, and more verbally articulate citizens. It's a place where audiences feel things TOGETHER, they think things TOGETHER, and they laugh TOGETHER.

I have never left a theatre after a good show willingly. When the lights come up after a transfixing, transporting play, I want to stay and share that experience with those strangers who went through it with me. I want to talk about it. I want to capture the fever dream of the last two hours and sear it into my memory. I want to leave somehow changed, somehow smarter, somehow more connected.

This is what this season is going to strive to do – connect us. Heaven knows there are so many forces seeking to divide us ... from each other, from our community, and from ourselves. ATC wants to bring our community together with stories of suspense, joy, love, and laughter. We want to spark your fantasies, your philosophies, and your hearts.

The health of a community is measured by the health of its arts and culture. At this moment in time, the arts and cultures are being sidelined by the financial bodies that they depend on to survive. There is almost no state funding for the



Arts this year. Corporations, the ones that are left in Arizona, have stopped giving the way they once did. And even though ATC dramatically increased its ticket sales and donations last season, we are still on the razor's edge of sustainability. Without state support, how can the Official State Theatre survive?

The answer is you. We need your help. We need you to talk about ATC and the shows we produce. We need you to see that we are different and talk about that difference. We need you to help sponsor programming, to help us sustain our artists, crews and staff, so that we can continue to be that cultural anchor that Arizona needs and deserves.

Please give what you can, tweet and post on your social media, and tell ALL your friends and family that we are here, bigger, better, and bolder than ever.

Onward and Upward!

Matt August  
Kasser Family Artistic Director

# LETTER FROM EXECUTIVE DIRECTOR GERI WRIGHT

With every moment, we have an opportunity to make a little magic in a world that desperately needs it. No matter who you are or what you do, there are always opportunities to share a kindness, hold a door, flash a smile, or send a note that may bring a little glimmer to someone's day. At ATC, we aim to provide moments of magic ... from your first conversation with our Box Office professionals to the art created by our amazing Production Teams on our stages that transport you while with us.

We are excited (like the first day of school excited) to present a lineup of productions that promise to entertain, inspire, and provoke thought in our 57th Season. As we venture forth, we are reminded of the importance of your support in ensuring the success and sustainability of our State Theatre. Your support is crucial in so many ways. Not only do patrons play a vital role in filling our seats, but donors also provide the financial support necessary to bring our productions to life.

The arts – and Arizona Theatre Company particularly – make a significant impact on our economy, build stronger communities, enhance academic performance, and help bridge society's divisions. And yet, arts are the least funded of all nonprofit organizations. Arts funding has been reduced – and more often than not, eliminated – from federal, state, corporate, and foundation philanthropic budgets.

In response, we are launching the Rise Above fundraising campaign. This campaign aims to support Arizona Theatre Company as we continue to adapt and evolve in the ever-changing landscape we find ourselves in today. By making a



donation at [ATC.org](http://ATC.org), you can help ensure that we can continue to bring exceptional theatre to our communities, support local artists, and provide magical moments that unite us.

We are grateful for your continued support and dedication to Arizona Theatre Company. Together, we can rise above any challenges that come our way and continue to inspire, engage, and unite our community through the power of the theatre.

Thank you for being a part of our theatre family.

Fondly,

Geri Wright  
Executive Director

## CAST (IN ALPHABETICAL ORDER)



### **Aaron Cammack (Lesgate, Tony Wendice Understudy)**

is over the moon to be back at ATC, and to be serving as the 2024/2025 Resident Artist. You may recognize him from the last couple seasons: *Intimate Apparel* as Mr. Marks, *Scrooge!* as Tom Jenkins, and *The Glass Menagerie*

as Tom Wingfield. Cammack trained with the illustrious Kathryn Gately and studied acting as a graduate student at the University of Washington. Regional and other theatre credits include *Fiddler on the Roof* as Mordcha (The Phoenix Theatre Company), *Sex with Strangers* as Ethan (12th Avenue Arts), *Love's Labour's Lost* as Berowne (Seattle Shakespeare Company), *Lungs* as M (Live Theatre Workshop), *Venus in Fur* as Thomas (Live Theatre Workshop), *Skies Over Seattle* directed and devised by Lisa D'Amour (Jones Playhouse), and others. Cammack was nominated for an Excellence in Teaching Award at the University of Washington. He would like to thank his family, Michael Garcés, this wickedly talented cast, and the recovery community for the unending support. @Aaron.Cammack | AaronCammack.com



### **Dan Domingues (Tony Wendice)**

is making his ATC debut. He most recently appeared in *Dial M for Murder* at Virginia Stage Company and *A Sherlock Carol* at Westport Country Playhouse. His Off-Broadway credits include Mark Shanahan's *A Sherlock Carol*

at New World Stages and *The Tempest*, *Wild Goose Dreams*, *Fidelis*, and *The Great Immensity* at The Public Theater, as well as shows at 59E59, Rattlestick, Abingdon, BAM, INTAR, Atlantic, Sheen Center, and Cherry Lane. Other major regional work includes roles at Bay Street Theater, George Street Playhouse, Barrington Stage,

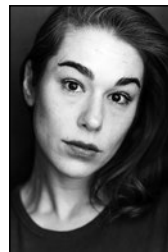
Alley Theatre, Arena Stage, Guthrie, Goodman, New York Stage & Film, Repertory Theatre of St. Louis, Pioneer Theatre, Long Wharf, and Portland Stage. Film and Television credits includes *Zoo*, *Run All Night*, *Future '38*, *In Stereo*, *New Amsterdam*, *West 40s*, *Blacklist*, *Royal Pains*, and *Law & Order*. Domingues holds an MFA from the A.R.T. Institute at Harvard, is an associate artist with The Civilians, and is co-host of the movie podcast Hot Date (hotdatepod.com).



### **Peter Howard (Inspector Hubbard)**

is delighted to return to ATC after playing Max in *The Royale* in 2019. As a performer, his regional theatre credits include the Mark Taper Forum, Long Wharf, Yale Rep, Pasadena Playhouse, the Guthrie, South Coast Repertory, and

Woolly Mammoth. Howard is a founding member of the Los Angeles-based Cornerstone Theater Company – a leader in the field of community-engaged artmaking – working as an actor, playwright, and director in collaboration with dozens of urban and rural communities across the U.S. since 1986. With Cornerstone, he has appeared in world premieres by Luis Alfaro, Sarah Ruhl, Erik Ehn, Naomi Iizuka, Larissa FastHorse, and Michael John Garcés, among many others. Howard is a recipient of a Fox Foundation Resident Actor Fellowship. Born and raised in Massachusetts, he currently lives in Los Angeles.



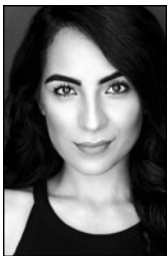
### **Lucy Lavelly (Maxine Hadley)**

is thrilled to make her Arizona Theatre Company debut! She loves Shakespeare, Sondheim, sunshine, salsa, chips, and all the cool plays she's done. Favorite theatre around the country includes Lady Macbeth in *Macbeth* at Orlando Shakes



## CAST (IN ALPHABETICAL ORDER)

and Theatre at Monmouth, New York Classical Stage, Pioneer Theatre Company, Syracuse Stage, Baltimore Center Stage, Asolo Repertory Theatre, Florida Studio Theatre, Maltz Jupiter Theatre, and more! Lavery runs the Night Shift Theatre Company and is a licensed NYC tour guide. She is a proud SAG/AFTRA/AEA Union member and is a graduate of the University of Notre Dame (BA) and the Asolo Conservatory for Actor Training. Awards include the Catherine Hicks Award. Love to cast, crew, mom, dad, Vern, family, and Karen Azenberg. For Barry. Thank YOU for joining us tonight. @rainbowdaylucy

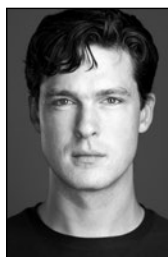


**Awesta Zarif (Margot Wendice)** is happily making her Arizona Theatre Company debut! She just finished traveling the country in the national Broadway tour of *The Kite Runner*, in which she played Soraya. Recent credits include Afia in *Selling Kabul* (Signature Theatre,

Seattle Repertory Theatre, InterAct Theatre Company), Stephanie Rahn in *Ink* (Round House Theatre/Olney Theatre Center co-production), Grace Poole/Blance Ingram/Bessie in *Jane Eyre* (Geva Theatre), and Margot in *Dial M for Murder* (Geva Theatre). Awesta has lived, trained, and performed internationally, including a several-year stint in Shanghai, China, a residency with UNESCO's International Theatre Institute in Croatia, and a fellowship at Accademia dell'Arte's Collaborative Arts Lab in Italy. She's a proud immigrant from Kabul, Afghanistan, and was primarily raised in San Diego, California. She holds a B.F.A. from Boston University's School of Theatre. Thank you to Sebastian, Judy Bowman, ATC, and YOU for being in the audience! Awestazarif.com | @awestaz | #letafghangirlslearn



**Ana Dragovich (Maxine Hadley Understudy)** is happy to be back working with Arizona Theatre Company! She is a Tucson-raised, LA-based singer and actor with experience in theatre, film/TV, and opera. Credits include Kit Kat Girl Fritzie/Fräulein Kost in *Cabaret* (Breckenridge Backstage Theatre), Mrs. Van Buren Understudy in *Intimate Apparel* (Arizona Theatre Company), Cannibal Queen in *Airness* (Breckenridge Backstage Theatre), Sibella Understudy/Lady Eugenia/Ensemble in *A Gentleman's Guide to Love and Murder* (Breckenridge Backstage Theatre), and Taylor in *Haunt Season* (First Fright LLC). Dragovich is a graduate of Loyola University Chicago (B.A. Theatre) and Roosevelt University Chicago College of Performing Arts (M.M. Voice). She would like to thank her amazing parents for their continuous encouragement and support!



**Sam McInerney (Lesgate Understudy, Inspector Hubbard Understudy)** is pleased to be making his Arizona Theatre Company debut. He has previously performed with Heartwood Regional Theater Company in Maine and Southwest Shakespeare Company here in Arizona. Some of his favorite roles have included Octavius Caesar in *Antony and Cleopatra*, Banquo in *Macbeth*, and Claudio in *Much Ado About Nothing*. He holds a B.F.A. from Carnegie Mellon University and has studied at the Royal Conservatoire of Scotland.



## CAST (IN ALPHABETICAL ORDER)



**Chelsey Jean Smith (Margot Wendice Understudy)** is a Tucson newcomer and thrilled to make her Arizona Theatre Company debut. A Jersey native, she's appeared on East Coast stages such as Walnut Street Theatre, Bristol Riverside Theatre, and the

Majorie S. Dean Little Theater in NYC. Credits include Evelyn Nesbit in *Ragtime*, Amy in *Company*, Beth March in *Little Women*, and Catherine in *The Foreigner*. Smith proudly holds her B.F.A. in Musical Theatre from Shenandoah Conservatory. She is grateful to be back at it after a brief hiatus, during which she's fulfilled her greatest role yet: "Mama." Sincerest thanks to ATC for the opportunity.

## THE CREATIVE TEAM

**Jeffrey Hatcher (Adaptor)** Broadway: *Never Gonna Dance* (Book). Off-Broadway: *Three Viewings* and *A Picasso* at Manhattan Theatre Club; *Scotland Road* and *The Turn of the Screw* at Primary Stages; *Tuesdays with Morrie* (with Mitch Albom) at The Minetta Lane; *Murder By Poe*, *The Turn of the Screw*, and *The Spy* at The Acting Company; *Neddy* at American Place; and *Fellow Travelers* at Manhattan Punchline. Other Plays/Theaters: *Compleat Female Stage Beauty*, *Mrs. Mannerly*, *Murderers*, *Mercy of a Storm*, *Smash*, *Armada*, *Korczak's Children*, *To Fool the Eye*, *The Falls*, *A Piece of the Rope*, *All the Way with LBJ*, *The Government Inspector*, *Dr. Jekyll and Mr. Hyde*, and others at The Guthrie, Old Globe, Yale Rep, The Geffen, Seattle Rep, Cincinnati Playhouse, Cleveland Playhouse, South Coast Rep, Arizona Theatre Company, San Jose Rep, The Empty Space, Indiana Rep, Children's Theater Company, History Theater, Madison Rep, Intiman, Illusion, Denver Center, Oregon Shakespeare Festival, Alabama Shakespeare Festival, Milwaukee Rep, Repertory Theater of St. Louis, Actors Theater of Louisville, Philadelphia Theater Company, Asolo, City Theater, Studio Arena, and dozens more in the U.S. and abroad. Film/TV: *Stage Beauty*, *Casanova*, *The Duchess*, and episodes of *Columbo*. Grants/Awards: NEA, TCG, Lila Wallace Fund, Rosenthal New Play Prize, Frankel Award, Charles MacArthur Fellowship Award, McKnight Foundation, Jerome

Foundation, and Barrymore Award Best New Play. He is a member and/or alumnus of The Playwrights Center, the Dramatists Guild, the Writers Guild, and New Dramatists.

**Michael John Garcés (Director)** previously directed *The Royale* at Arizona Theatre Company. Regional credits include *For the People* by Ty Defoe and Larissa FastHorse (The Guthrie Theatre), *Native Nation* by Larissa FastHorse (ASU Gammage), *Seize the King* by Will Power (The Alliance Theatre), *the just and the blind* by Marc Bamuthi Joseph and Daniel Bernard Roumain (Carnegie Hall and The Kennedy Center), *The Play You Want* by Bernardo Cubrias (The Road Theatre Company), and *The Rivers Don't Know* by James McManus (City Theatre). He is the former artistic director of Cornerstone Theater Company, where he directed many projects including *Highland Park is Here* by Mark Valdez, *California: The Tempest* by Alison Carey, and *Café Vida* by Lisa Loomer. Plays he has written include *TOWN* (Theatre Horizon) and *36 Yesses* and *Magic Fruit* (Cornerstone). Garcés is a professor of practice at Arizona State University. He is the recipient of the Doris Duke Artist Award and the Princess Grace Statue Award.

**James Noone (Scenic Designer)** has designed for Broadway productions including *Sunset*

## THE CREATIVE TEAM

*Boulevard, Lady Day at Emerson's Bar and Grill, A Time to Kill, Match, A Bronx Tale* (play), *A Class Act, Jekyll and Hyde, The Rainmaker, The Sunshine Boys, The Gin Game, Inherit the Wind*, and many others. Off-Broadway productions designed include *The Boys In The Band, In Masks Outrageous and Austere, White Chocolate, Frankie and Johnny in The Clair de Lune, Ruthless!, Full Gallop, Fully Committed*, and *Three Tall Women* at theatres including Manhattan Theatre Club, Irish Rep, Playwrights Horizons, Lincoln Center Theatre, The Women's Project and Productions, and others. Opera Companies he has designed for are The English National Opera, Glimmerglass Festival, Washington National Opera, Los Angeles Opera, Lyric Opera of Chicago, Atlanta Opera, Houston Grand Opera, Boston Lyric Opera, and others. For TV and Film, his work has appeared on Live from Lincoln Center, Great Performances, and HBO. Awards include the American Theatre Wing Design, Drama Desk, Helen Hayes, and LA Ovation awards.

**Patrick Holt (Costume Designer)**'s costume design work has been seen on stages across the country including The Guthrie Theater, The Milwaukee Rep, The Kansas City Rep, Playmakers Rep, Pioneer Theater Company, The Arizona Repertory Theater, The Colorado Shakespeare Festival, The Alabama Shakespeare Festival, The Moscow State Theater, The Old Globe Theater, The Kennedy Center for the Performing Arts, and The American Dance Festival. He has also worked both on Broadway and Off-Broadway productions for the Public Theater and The John Houseman Theater in NYC. Film and Television work includes projects with HBO, CBS, The A&E Network, World of Wonder, and CBS. Holt is also a professor at the University of Arizona, where he heads the costume design program.

**Tom Ontiveros (Lighting Designer)** consistently contributes to productions affecting themes of social justice, diversity, and equity for

underrepresented communities. He has received numerous awards and nominations for his work including *The Exonerated* (Lucille Lortel Award), *My Barking Dog* (L.A. Drama Critics), *The House in Scarsdale* (nominated Best Projection Design, LA Drama Critics), *Shiv* (nominated, Best Projection Design, StageRaw), *Lady Day at Emerson's Bar & Grill* (Ovation! nomination), and *Completeness* (Ovation! nomination). Ontiveros is an Associate Professor of Design and Chair of the Theatre Arts Department at the University of La Verne. Credits include design at Oregon Shakespeare Festival, Utah Shakespeare Festival, Center Theatre Group, American Repertory Theatre, Berkeley Repertory, Cornerstone, Opera Theatre of St. Louis, Perseverance Theatre, Native Voices, East West Players, South Coast Repertory, Pasadena Playhouse, Geffen Playhouse, La Jolla Playhouse, Hong Kong Cultural Centre, Hungarian National Theatre, Brooklyn Academy of Music, Kennedy Center, and L.A. Opera. [cargocollective.com/tomontiveros](http://cargocollective.com/tomontiveros)

**Daniel Perelstein Jaquette (Sound Designer)** is a freelance sound designer, composer, and musical director. He has been the professor of sound design for theatre at Arizona State University since 2019. Projects with ATC include *Intimate Apparel, Private Lives*, and *Nina Simone: Four Women*, and he also is the sound designer for this season's *Blues in the Night*. Other recent designs and original music include projects at Opera Philadelphia, Cincinnati Playhouse, Cleveland Playhouse, McCarter Theatre, Actors' Theatre of Louisville, Geva Theatre, Phoenix Theatre, Wilma Theater, Arden Theatre, Roundabout Theatre, People's Light, and others. Jaquette has received two Barrymore Awards and 16 Barrymore Award nominations in three categories, including recognition as a finalist for the F. Otto Haas award. He received an Independence Foundation Fellowship in the Arts in 2013 to explore the relationship between sound design and the visual arts. He is a proud member

## THE CREATIVE TEAM

of the Theatrical Sound Designers and Composers Association, and United Scenic Artists local 829.

**Brent Gibbs (Fight Director)** returns to ATC, where he choreographed violence for last year's *True West*. A Professor Emeritus at the University of Arizona, for many years he headed the professional actor training program and served as Artistic Director for The Arizona Repertory Theatre, where he directed over 50 productions including 21 different Shakespeare titles. A certified teacher and fight director with the Society of American Fight Directors, he also gained recognition as an Advanced Actor/Combatant by the Society of British Fight Directors and Fight Directors Canada. He taught stage combat workshops around the world including the International Theatre School Festival in Amsterdam and the Royal Academy of Dramatic Art in London. In Arizona, he garnered an ariZoni Award for his fights in the Southwest Shakespeare Company's production of *Henry V*. In 2020, he was named an Arizona Arts Hero for his work as a director, fight director, and educator.

**Darlene Miyakawa (Stage Manager)** is making her ATC debut. Recent regional theater experience includes Geffen Playhouse, South Coast Repertory, The Old Globe, Geva Theatre Center, Barrington Stage Company, East West Players, and Getty Villa. Opera and Symphony credits include Long Beach Opera, Piedmont Opera, Opera San Jose, California Symphony, Fort Worth Opera, Opera Memphis, Tri-Cities Opera, New York City Opera, OPERA San Antonio, LA Opera, and LA Philharmonic. Recent dance involvement includes LA Dance Project (in Qatar) and The Watermill Center Festival. Thank you to ATC for this opportunity!

**MyKel Marie Hall (Assistant Stage Manager)** is thrilled to be back for her fourth season at Arizona Theatre Company. Her favorite past credits

at ATC include *The Glass Menagerie*, *True West*, and *The Legend of Georgia McBride*. Hall received her B.S. in Theatre Arts and Psychology from Southern Utah University. All the love and gratitude to her friends and family for their endless support and encouragement.

**Judy Bowman (Casting Director)** is excited to return to ATC! Past credits with the company include work on *The Lion*, *Justice*, *Nina Simone: Four Women*, *Pru Payne*, and *The Royale* (dir. Michael John Garcés). Recent regional credits include *Native Gardens* (Dorset Theatre Festival), *A Christmas Carol* (McCarter), *Sanctuary City* (Kitchen Theatre/Geva), *The Great Leap* (Cleveland Play House), and *Incendiary* (Woolly Mammoth). Upcoming projects include *Mrs. Stern...* (59e59 Off-Bway), *Steel Magnolias* (Sharon Playhouse), *The Humans* (Palm Beach Drama Works), and *Summer, 1976* (Wellfleet Harbor Actors Theatre). She has numerous film and television credits as well as musicals. Bowman is excited to be back at ATC and working with Michael again, as well as with Pioneer. judybowmancasting.com

**Harold Dixon (Dialect Coach)** has acted and directed Off-Broadway, at the Kennedy Center, and at over 20 regional theatres across the USA, including the Guthrie, Arena Stage, Long Wharf, Pittsburgh Public, Cincinnati Playhouse, Actors Theatre of Louisville, Arizona Theatre Company, Gloucester Stage, Chamber Music Northwest, and Invisible Theatre, Tucson, among others. He played Norman Granz in the national tour of *Ella*. He was head of acting/musical theatre at the University of Arizona School of Theatre, Film, and Television for many years and is now Distinguished Professor Emeritus. He was founding artistic director of the Arizona Repertory Theatre. The Harold Dixon Directing Studio is named for him. Last year, he served as the dialect coach for *Scrooge!* at ATC.

## THE CREATIVE TEAM

**Lila Rachel Becker (Assistant Director)** is a Brooklyn-based director of new work. Born and raised in Washington, D.C., she has directed and developed work with theaters all over the country including Actors Theatre of Louisville, Luna Stage, Woolly Mammoth, the Williamstown Theatre Festival, Portland Stage Company, Folger Theatre, the First National Tour of *The Bridges of Madison County*, and the Source Festival. Recent productions include *Westphalia* (Luna Stage); *Three Sisters* and *Revolt. She Said. Revolt Again.* (University of Iowa); and *come apart* (Portmanteau/The Tank); *bad things happen here* (Edinburgh Festival Fringe); *Clarabelle, 86* (Cloud City); and *Golden* (Actors Theatre of Louisville). Becker is a member of the LCT Directors Lab and Directors Lab North and Associate Member of SDC. She holds a BA from Wesleyan University and an MFA from the University of Iowa. [lilarachelbecker.com](http://lilarachelbecker.com)

**Pioneer Theatre Company (PTC)** Now celebrating its 63rd season, the award-winning PTC is Utah's premiere professional theatre company and a leading arts organization of the West. Led by Artistic Director Karen Azenberg and Managing Director Adrian Budhu, PTC presents world-class productions that celebrate diversity in culture and society, and serve as the connecting bridge between art and scholarship as an affiliate of the University of Utah. Notable productions include the regional premieres of *Les Misérables*, Sting's *The Last Ship*, and Frank Wildhorn's *The Count of Monte Cristo*, as well as the world premieres of *Shucked* (the first-ever Broadway tryout in Utah), *A Distinct Society* by Kareem Fahmy, *Alabama Story* by Kenneth Jones, *The Messenger* by Jeff Talbott, and *Ass* by Ellen Simon. For more information, visit [PioneerTheatre.org](http://PioneerTheatre.org).

## EXECUTIVE LEADERSHIP

**Matt August** is the Kasser Family Artistic Director. He is a theatre, opera, and film director and educator whose productions have broken box-office records on Broadway (*Grinch*) and played in London, across the UK, Off-Broadway, in major Regional theatres, at festivals, on national tours, at the Grand Ole Opry, and for three holiday seasons at Madison Square Garden. His work has been featured on television talk shows and NPR and performed at the White House for President Bush, Cabinet Members, and military children.

He was the Associate Director to multi-Tony-winning director Jack O'Brien on the Broadway productions of *Henry IV*, *The Full Monty*, *The Invention of Love*, and *Imaginary Friends*. He was promoted to Resident Director on Tom Stoppard's *The Invention of Love*, for which both lead actors received Tony Awards, and on the Tony-winning *Henry IV* (Best Director and Best Revival). He also directed the Australia production of *The Full*



Geri Wright & Matt August. Photo: Tim Fuller

## EXECUTIVE LEADERSHIP

*Monty*, earning a Helpmann Award co-nomination for Best Direction. August directed *World, American, and Regional Premieres* including the record-breaking productions of *Sixteen Wounded* at the Cherry Lane and Long Wharf Theatres (starring Martin Landau), *In the Heights* (starring Anthony Ramos in his AEA debut), and *King Charles III* and *The Gospel According to Thomas Jefferson, Charles Dickens, and Count Leo Tolstoy: Discord* for Arizona Theatre Company.

His productions have been recognized with nominations and awards from LA's *Ovation*, Washington, D.C.'s *Helen Hayes*, Arizona's *Mac*, San Francisco's *Bay Area Critics*, *Broadway World*, Utah's *Audience Choice*, and Australia's Helpmann Awards. His work has appeared on Year End Top Ten lists for the *LA Times*, *San Francisco Chronicle*, *Huffington Post*, *Arizona Republic*, *Oakland Tribune*, *Arizona Daily Star*, *San Jose Mercury News*, and *NPR/KQED*. He has been awarded internships, fellowships, and residencies from the Old Globe Theatre, Drama League, Oregon Shakespeare Festival, The Acting Company, Robert Wilson's Watermill Center, the Juilliard School, The Wrestling School, and San Francisco's Zen Center. In addition to theatre, he was awarded the Panavision New Filmmakers Grant and directed the award-winning short family film *How to Get to Candybar*.

In 2006 and 2007, August directed the Broadway productions of *Dr. Seuss' How the Grinch Stole Christmas – The Musical*, which broke box office records and has been touring every year since 2008, including a UK production in 2019. His production of *A Christmas Carol* ran for five years at Ford's Theatre, and his Shakespeare productions include *Much Ado About Nothing* (Pioneer), *Two Gentlemen of Verona* (Old Globe and Acting Company), *Tempest* (Hanger), *Romeo and Juliet* (National Shakespeare Company), and *Merry Wives of Windsor* (Acting Company). He

recently directed the opera *La Boheme* (starring Marina Costa Jackson) and *Pirates of Penzance* at Noorda Center.

He served on panels and committees for the Society of Directors and Choreographers, and has mentored emerging directors through both the SDCF and Drama League as well have having taught directing as an Assistant Professor at Utah Valley University. [MattAugust.com](http://MattAugust.com)

**Geri Wright**, Executive Director, joined ATC in January 2020 and was Managing Director of the company through its most challenging time ever. While the COVID shutdown posed many challenges, it afforded the opportunity to reimagine the 55-year-old organization's structure from top to bottom to ensure sustainability into the future.

Wright brings more than 25 years of nonprofit leadership, management, and fundraising experience to ATC, including as CEO at Act One, where she more than doubled the organization's impact. She also served as Chief Development Officer at the American Red Cross for four years and Director of Development at the Heard Museum for more than 11 years.

Her love of theatre started at Radio City Music Hall in New York City on a school field trip and has grown into a passion for the arts today. Throughout her career, she has been a passionate advocate for the importance that the arts play in creating healthy and prosperous communities.

She was recently recognized as a Titan 100 Phoenix CEO and was named one of the *Phoenix Business Journal's* 2019 Outstanding Women in Business. She also has been honored with an assortment of acknowledgments for her work in the charitable community.

Wright and her family – including two horses, an Australian cattle dog, and a Great Pyrenees mix puppy – reside at the base of the McDowell Mountains in North Scottsdale.

# DIAL M FOR MURDER

*Dear Patron,*

*Why are you here tonight?*

*If you are here to try to figure out the killer in this play, we have news for you:*

*This is not a Murder Mystery. This is not a Whodunit. This is the apex of stage Thrillers.*

*We know almost immediately who the murderer is and what their motives are: Love, Money, Revenge ... The old standards.*

*What you don't know is how it's all going to unfold. And just when you think you might know what is going to happen next ... think again!*

Following his service in the British Royal Artillery during World War II, playwright Frederick Knott found himself fascinated by what would drive the average person to commit the heinous act of murder. And while he was noted to have hated writing – doing so only to pay the bills – there was no doubt he had the talent to conjure up chilling stories of passion, deceit, and justice.

*Dial M For Murder* depicts what happens when secrets, desires, and reputations are threatened. As the complications settle in, the characters increasingly panic. Should they fight to protect what is theirs? Should they face the consequences of humiliation, loss, or even death? Most importantly, who can they trust? Knott's exploration of the mind of a murderer uncovers that even the best laid plans sometimes require improvisation because control is only an illusion.

When he initially wrote the play, *Dial M* struggled to get its wheels off the ground. It was rejected by several unwitting British producers. Eventually, the BBC picked it up as a 90-minute teleplay for an episode of Sunday Night Theatre. *Dial M* proved to be an enthralling, audience-pleasing story, and subsequently the play made it to Broadway later that year.

Shortly after its success on the Great White Way, Knott sold the rights to Alexander Korda for about \$1,300. Korda then sold the rights to Warner Brothers for upwards of \$200,000. Imagine Knott's frustration! Writing to earn a paycheck and then getting swindled out of an even bigger one ... when you don't even like writing in the first place! Or better yet, turn the table: imagine conning a man (who just wrote a piece about a masterminding murderer) out of his rightfully deserved fortune. Pretty audacious of Korda, don't you think?

Knott later had the opportunity to team up with Alfred Hitchcock to create the box office-busting film adaptation starring Grace Kelly and Ray Milland. He was now one of the hottest scribes



## ABOUT THE PLAY

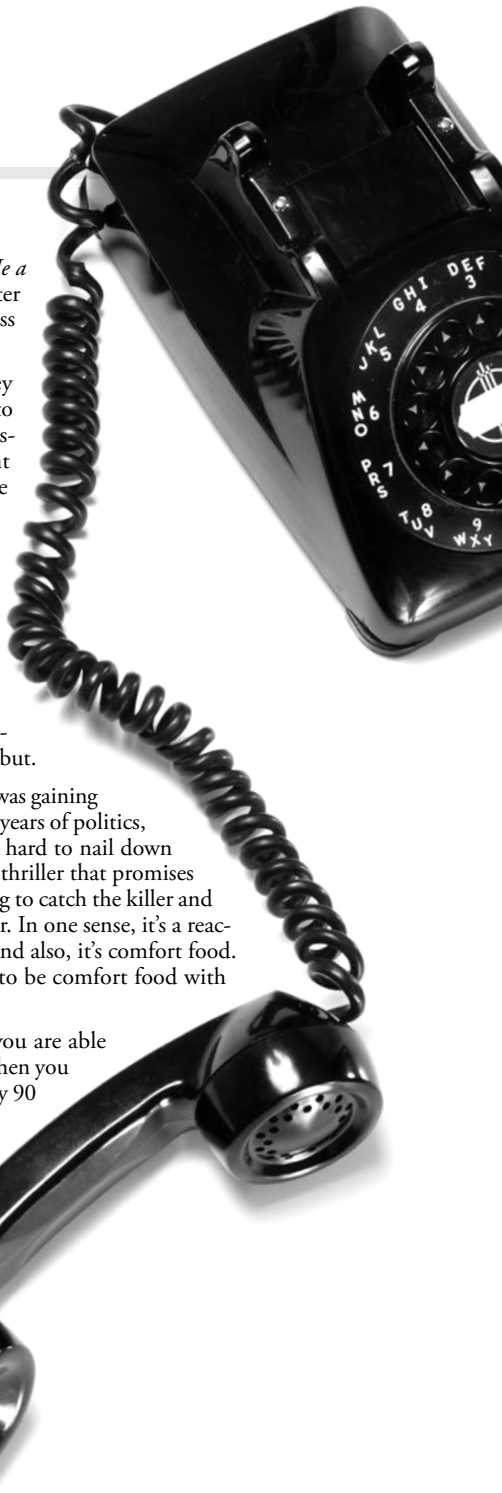
in town, and followed that success with *Write Me a Murder* (1961) and *Wait Until Dark* (1966). After that, he retired from writing despite the countless requests from fans and producers for more.

Fast forward to 2022, when playwright Jeffrey Hatcher adapted this masterful piece of theatre into something fresh and new. Hatcher was commissioned by The Old Globe, but was initially hesitant because, in his opinion, *Dial M* was already “the perfect play.” Yet, he was convinced that updating some of the relationships and tightening the plot was an interesting challenge and worthy endeavor.

In this adaptation, Hatcher seamlessly blends modern ideas to fit within the 1950s era and effectively uses them to his advantage. With deeper secrets, higher stakes, and new thrills, Hatcher’s adaptation has gone on to be one of the most-produced plays in the last couple of theatre seasons. This production marks its Arizona debut.

When asked why he thought this particular piece was gaining popularity, Hatcher said, “After six or seven hard years of politics, and pandemic, and everything – where facts are hard to nail down and truth is malleable – people like the idea of a thriller that promises we are going to nail down the facts ... we are going to catch the killer and that killer will be punished in one way or another. In one sense, it’s a reaction to these very queasy times that we live in. And also, it’s comfort food. So, I think the job of an adaptation like this is to be comfort food with some twists and turns that are new.”

So, by all means, sit back and relax as long as you are able while the tension builds. But don’t be surprised when you find you’ve been on the edge of your seat for nearly 90 minutes. We live for the thrill!





# CORPORATE, FOUNDATION, AND GOVERNMENT PARTNERS

Our work is made possible due to the generosity of many corporations, foundations, and government supporters. Through these partnerships, we can maintain a standard of artistic excellence while providing greater access to all.

List reflects donations made July 1, 2023 to September 18, 2024

2024/2025 SEASON SPONSOR:  
**I. MICHAEL AND BETH KASSER**

**Artistic Angels**

**\$100,000+**

Flinn Foundation  
LAVIDGE  
Virginia G. Piper  
Charitable Fund

**Ovation Circle**

**\$50,000 - \$99,999**

The Shubert Foundation

**Spotlight Circle**

**\$25,000 - \$49,999**

Arizona Commission on the Arts  
HS Lopez Family Foundation  
Margaret E Mooney Foundation  
at Tucson Foundations  
SRP  
Richard P. Stahl  
Charitable Fund

**Artistic  
Director's Circle**

**\$10,000 - \$24,999**

APS  
Arts Foundation for Tucson  
and Southern Arizona  
The Connie Hillman  
Family Foundation  
National Endowment  
for the Arts  
The Stocker Foundation  
RBC Wealth Management

**Producer's Circle**

**\$6,000 - \$9,999**

City of Tempe Arts and Culture  
The DesertLeaf  
UnitedHealthcare

**Director's Circle**

**\$4,000 - \$5,999**

Blue Cross Blue Shield of Arizona  
Margaret T. Morris Foundation  
Scottsdale Fashion Square  
Spencer Fane LLP  
Tempe Diablos Charities  
Tucson Desert Song Festival

**Designer's Circle**

**\$2,000 - \$3,999**

Cantor Forensic  
Accounting, PLLC  
Cox Charities  
Phoenix Pride  
PICOR Charitable Foundation  
Kellenberger + Tollefson Center  
The John and Helen  
Murphy Foundation  
Withtoft Apprill Family  
Foundation

**Insider**

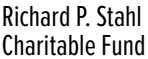
**\$1,000 - \$1,999**

The Gadsden Company  
Sand Reckoner  
Ben Walls Films

**Patron**

**\$500 - \$999**

Anonymous  
Actor's Equity Foundation  
The Haddock Stanton  
Foundation  
The Learning Curve  
Margaret Mellon Hitchcock  
Foundation  
The Benevity Community  
Impact Fund  
PayPal Giving Fund



# DONOR ADVISED FUNDS

List reflects donations made July 1, 2022 to September, 18, 2024

## Anonymous

The Ken and Kelley Abrahams  
Charitable Fund at The American  
Gift Fund

The Larry R. and Florence A.  
Adamson Fund at the Community  
Foundation for Southern Arizona

The Ms. Jada Crellin Ahern  
Donor Advised Fund at National  
Philanthropic Trust

The Mary and Cameron Artigue  
Charitable Fund at Schwab  
Charitable

The Daniel Asia Donor Advised  
Fund at Renaissance Charitable

The Daniel Asia Fund at Schwab  
Charitable

The ASU and ASUF at Valley of the  
Sun United Way

The BD2 Donor Advised Fund at  
the Community Foundation for  
Southern Arizona

The Berg Charitable Gift at Fidelity  
Charitable

The Jeffrey Berg and Debra  
Paget Fund at Cornell University  
Foundation

The Bolduc Family Charitable Fund  
at Schwab Charitable

The Frances Chapin Foundation  
Philanthropic Fund at United Way  
of Tucson and Southern Arizona

The Charitable Contributions  
for Improving Quality of Live  
Donor Advised Fund at Fidelity  
Charitable

The Amy Charles and Steve  
McMillan Donor Advised Fund  
at The Jewish Community  
Foundation of Southern Arizona

The Bill/Donna Dehn Charitable  
Fund of the Ayco Charitable  
Foundation

The Samuel Denmark Family Fund  
at Fidelity Charitable

The Laura and Michael  
DiChristofano Fund at Morgan  
Stanley GIFT

The Norman and Tricia Don  
Charitable Fund at American  
Endowment Foundation

The Adrienne Drell and Frank  
Nitikman Fund at National  
Philanthropic Trust

The Gerald and Barbara Ehrlich  
Donor Advised Fund at Bank of  
America Charitable Gift Fund

The Flatt Family Foundation at the  
Arizona Community Foundation

The Jane Gellman Donor Advised  
Fund of the Jewish Community  
Foundation of Milwaukee Jewish  
Federation, Inc.

The Robert and Laurie Kaye Glaser  
Donor Advised Fund at The Jewish  
Community Foundation of

Southern Arizona

The Thomas Godfrey Charitable  
Fund at Fidelity Charitable

The Gerry Goldsholle and Myra  
Levenson Donor Advised Fund at  
Schwab Charitable

The Ellen and David Goldstein  
Donor Advised Fund at the Jewish  
Community Foundation of

Southern Arizona

The Debbie Goodman and Patrick  
Butler Donor Advised Fund at  
Schwab Charitable

The Gordon Family Fund at Fidelity  
Charitable

The Greenleaf/Molberg Family  
Fund at Schwab Charitable

The Guilfooy Family Charitable Fund  
at Schwab Charitable

The Hazan Family Donor Advised  
Fund at the Jewish Community  
Foundation of Southern Arizona

The Mack Jones Donor Advised  
Fund at Schwab Charitable

The Michael and Robin Kaiserman  
Philanthropic Fund of the Jewish  
Community Foundation of

Southern Arizona

The Karcis and Seward Giving  
Fund at Fidelity Charitable

The Lowell and B Koppel  
Charitable Fund at Vanguard  
Charitable

The Carol and Foster Kivel  
Family Fund at the Community  
Foundation for Southern Arizona

The Norm and Teri Klein Donor  
Advised Fund at Schwab  
Charitable

Phillip and Gina Koo Family  
Charitable fund at Fidelity  
Charitable

The Kwoh Family Charitable Fund  
at Vanguard Charitable

The Sally Lanyon Donor Advised  
Fund at The Jewish Community  
Foundation of Southern Arizona

The Robert B. Leff and Janice  
M. Leff Fund at the Arizona  
Community Foundation

The Bertie and Jack Levkowitz  
Donor Advised Fund at the Jewish  
Community Foundation of

Southern Arizona

The Betsy and Lew Lurie Family  
Charitable Fund at Fidelity  
Charitable

The Charles Lynn and Janet Lynn  
Donor Advised Fund at Schwab  
Charitable

The Meyer Family Foundation

The George and Eleanor Mink  
Family Fund at Schwab Charitable

The Barbara D. Molotsky Fund at  
Fidelity Charitable

The Patrick J. O'Leary Foundation  
at Fidelity Charitable

The Pozarnsky/Riley Charitable  
Fund at Fidelity Charitable

The Rein Family Fund at Schwab  
Charitable

The Reynolds Family Fund for  
Charitable Giving at Fidelity  
Charitable

The Valerie and Herschel Richter  
Donor Advised Fund at the Jewish  
Community Foundation of Greater  
Phoenix

The Riegger Charitable Fund at  
National Philanthropic Trust

The Roehrick Family Fund at  
Fidelity Charitable

The Dr. Herschel and Jill  
Rosenzweig Donor Advised Fund  
at Jewish Community Foundation  
of Southern Arizona

The Tom and Eileen Rotkis

Donor Advised Fund at Schwab  
Charitable

The RW/JM Charitable Trust at  
Fidelity Charitable

The Deborah and Marc Sandroff  
Donor Advised Fund at Morgan  
Stanley

The Arlene and Morton Scult Arts  
Foundation at Arizona Community  
Foundation

The Lex and Carol Sears  
Philanthropic Fund at United Way  
of Tucson and Southern Arizona

The Shirley Family Charitable Fund  
at Fidelity Charitable

The Daniel J. and Evelyn G. Simon  
Donor Advised Fund of the Jewish  
Community Foundation of Greater

Phoenix, Inc.

The Smallsreed Family Fund at  
Fidelity Charitable

The Richard P. Stahl Charitable  
Fund at American Endowment  
Foundation

The Stonewall Foundation  
Fund held at the Community  
Foundation for Southern Arizona

The John and Carolyn Stuart  
Charitable Gift Fund at Bank of  
America Charitable Gift Fund

The Tavel Family Fund at Fidelity  
Charitable

The Tyler and Marcia Tingley  
Donor Advised Fund at Fidelity  
Charitable

The Gerald Weiner Designated  
Fund of the Jewish Community  
Foundation of Greater Phoenix,  
Inc.

The Ronald & Diane Weintraub  
Donor Advised Fund at The  
Jewish Community Foundation of  
Southern Arizona

The Elliott and Wendy Weiss  
Charitable Gift Fund at Schwab  
Charitable

The James D. Wezelman Donor  
Advised Fund at the Jewish  
Community Foundation of  
Southern Arizona

The Zimmermann Family Fund at  
Fidelity Charitable

# INDIVIDUAL DONORS

**Our work is made possible due to the generosity of many individual supporters.**  
**With the gifts from the following donors, we can maintain a standard**  
**of excellence while providing access to all.**

July 1, 2023 – September 18, 2024

2024/2025 SEASON SPONSOR:

## I. MICHAEL AND BETH KASSER

### Artistic Angels

**\$100,000+**

I. Michael and Beth Kasser  
Mary Beth and Jerry Radke  
Susan and Jeffrey Rein

### Ovation Circle

**\$50,000 - \$99,999**

Shirley Estes  
Kay and Walter Oliver  
Enid and Michael Seiden

### Spotlight Circle

**\$25,000 - \$49,999**

Anonymous  
Patricia Engels and  
Dick Medland  
Jean and Fred Shaulis

### Artistic Director's Circle

**\$10,000 - \$24,999**

Anonymous  
Char and Alan Augenstein  
Mary Jan and Paul Bancroft  
Denice Blake and  
John Blackwell  
Susan and Brian Boylan  
Deanna Evenchik-Brav  
and Garry Brav  
Gloria and Phil Cowen  
Estate of Frank K. Davis  
Laura and- Michael  
DiChristofano  
Barb and Ted Frohling  
Jay Glaser and Joan Reichard  
Rob and Laurie Glaser  
Jeff Guldner and Sydney Reed  
Hugh Hallman  
Suzanne and Lester Hayt  
Rebecca and Albert Johnson  
Julie T. Kasper

Teri and Norman Klein  
Bill Lewis and Rick Underwood  
Marcia and Andrew Meyer  
Jack and Becky Moseley  
Mary and Matthew Palenica  
Mallory and Donald Riegger  
Herschel Rosenzweig  
Cathleen and Bill Small  
Nancy Swanson  
Susan J Thompson  
Emily and Bob Vincent  
Linda Wurzelbacher

### Producer's Circle

**\$6,000 - \$9,999**

Jacklyn Connoy and  
William Maguire  
Bruce L. and Lynne  
Wood Dusenberry  
Wendy and Richard Gilman  
Davie Glaser in memory  
of David Glaser  
Ellyn and Jeff Gold  
Nora Hannah and  
David Dunteman  
Amanda and Stephen Heitz  
Marta and Steven Ketchel  
Debra and James Larson  
Joan and Robbie Sherwood  
Carolyn and John Stuart  
Taryn and Mark Westergaard  
James Wezelman and  
Denise Grusin  
Michael Willoughby

### Director's Circle

**\$4,000 - \$5,999**

Anonymous  
Kelley and Ken Abrahams  
Beverly Arrington  
Mary and Cameron Artigue  
Mara and Keith Aspinall

Frederick Banfield and  
Eileen M. Fitzmaurice  
Connie and Rodney Boorse  
Vicki and Jim Click  
Judy and Dave Crone  
Leslie Dashed and  
Jack Salisbury  
Bill and Donna Dehn  
Drs. Thomas Elliott and  
Cindy Rankin  
Joan Epstein  
Joanie Flatt  
Dr. Mary Jo Ghory  
Peggy Goulding  
Lee and Arthur Herbst  
Sandy and Ed Holland  
Bob and JoAnne Hungate  
Brian Jorgensen and  
Mark Latka  
Mary and Paul Koss  
Sally and Richard Lehmann  
Dr. Lorraine Mackstaller  
Sandra Maxfield  
Elyce and Mark Metzner  
Adam James Michael and  
Manu Srivastava  
Rosanna Miller  
Caroline and Peter Morse  
Jean and Jordan Nerenberg  
Patrick J. O'Leary and  
Karen Yamasaki  
Karen Peters and Chris Thomas  
Joanne Sibley  
Jacqueline Smith  
Erica and Ross Stutman  
Marlene Tompkins and Jim Pyne  
Judy Weill  
Karen and James Wohlgemuth

### Designer's Circle

**\$2,000 - \$3,999**

Anonymous  
Larry R. and Florence  
A. Adamson

Barbara and Franklin  
L. Bennett Sr.  
Barbara Bickel  
Sandra and Charles Bonstelle  
Susan Call  
Amy Charles and  
Steve McMillian  
Virgina Lee Clements  
Exempt Trust  
Alicia and Jon Crompton  
Jacklyn Connoy and  
William Maguire  
Thomas and Veronica Delgado  
Mr. and Mrs. F. Don DeLong  
Catherine "Rusty" Foley  
Pamela and Thomas Frame  
Vicki Fuller and  
Michael Momon  
Drs. Margot W. and J.D. Garcia  
Louise and Jim Glasser  
Lauren and Michael Gordon  
Leslie Hall and Ted Jarvi  
Anne and David Hameroff  
Sandra and Elliott Heiman  
Ann McLaren Helstad  
Tom and Sandy Hicks  
Gary Jackson and  
Oscar De La Salas  
Helen and Robert Jennette  
Mack Jones  
Drs. George and Maria Knecht  
Gina and Phil Koo  
Mr. and Mrs. Mark Landay  
Gloria and Jim Lawrence  
Terry McNellis  
Barbara Molotsky  
Nina and Brian Munson  
Trudi and Robert Murch  
Pat and Wayne Needham  
Jennifer and Charles Putney  
Eileen and Tom Rotkis  
Brenda and Jim Rowland  
Rita and Steven Schlosser  
Trisa and Andrew Schorr  
Ron and Patricia Schwabe

# INDIVIDUAL DONORS

Gerald Schwartz  
Ingeborg and Ralph  
Silberschlag  
Karen Thornton  
Weegee and Scott Whiteford

## Insider

**\$1,000 - \$1,999**

Anonymous  
Joseph Acker  
John Arbuckle, Jr.  
Lori and David August  
Marianne Ayres  
Lani and Josh Baker  
Carolyn Bass  
Rosalie and Al Baumrucker  
Tony and Maria Beram  
Susan Berg  
Judy Berman  
Bradley Bohnert  
Tyna Callahan and Dimitri  
Voulgaropoulos  
Mr. and Mrs. D. Chavez  
Al and Sharyn Chesser  
Demion Clinco  
Elaine and Sidney Cohen  
Bruce Covill and  
Lucia Renshaw  
Barbara Cummings  
Charles Curtis  
Marcia and David Davenport  
Barbara Davis  
Stephen and Ruth Dickstein  
Mary Ann and Darryl Dobras  
Ms. Anna Don  
Tricia and Norman Don  
Laylah and Nathan Douglas  
Adrienne Drell and  
Frank Nitikman  
Jacques Dumont  
Martha Durkin  
Martin and Zarin Felli  
Margaret and Dennis  
Fesenmyer  
Frank Flasch  
Louise and John Francesconi  
Jane Gellman  
Carol and Paul Gerlach  
Cathleen and Thomas Godfrey  
Michael Godnick  
Laurie and Chuck Goldstein  
Vicki Gotkin and  
Edward French  
Donita Gross  
Suzanne "Zippy" Gross

Dr. C. Keith Groty and  
Reverend Mary V. Groty  
Pam and Stan Hart  
Sharon and Louis Hekman  
Judy and Michael Holser  
Bob and Susan Johnstone  
Leianne Jones  
Nathan Joseph  
Adrianne Kalyna and  
Scott Michel  
Jamie and Bill Kelley  
Tom Kelly  
Bruce Kilbride and  
Lynn Krabbe  
Kit and Dan Kimball  
Carol and Foster Kivel  
Karen and Sherwin  
Koopmans  
Nancy and Kent Kwoh  
Jane Langenfeld and  
Duncan Chang  
Thomas Large  
Gloria and Jim Lawrence  
Marianne and Bill Leedy  
Janice and Robert Leff  
Dr. and Mrs. Martin Levy  
Sharon Lewis and  
Mayor Shanken  
Ann Lovell  
Anne and Ed Lyman  
Janet and Charles Lynn  
Jo Ann and Matthew  
Madonna  
Thom and Kathy Mansur  
Kit and Joan Marrs  
Michelle and Joseph  
Millstone  
Donnasu and Jim Moody  
Phyllis Morgan  
Karen Nackard  
Douglas Ng  
Parviz Nikraves and  
Agnes Stahlschmidt  
Peggy Odendahl  
Karen Peters and  
Chris Thomas  
Sylvia Pozarnsky  
and Tom Riley  
Steven Ratoff  
Emily Mimi Ravits  
Ann H. Redding  
Carole and Ronald Rezetko  
Christine and John-  
Paul Rocznik  
Chuck and Terri Roehrick  
Drs. Adib and Vivi Sabbagh

Deborah and Marc Sandroff  
Suzanne and Lewis Schorr  
Marc and Tracy Schwimmer  
Arlene and Morton Scult  
Carol and Lex Sears  
Mitra Shahi and David Cohen  
Cathy Shell  
Steve and Shelly Silverman  
Evelyn G. and Daniel J. Simon  
Sue Tavel  
Marcia and Tyler Tingley  
Karen and Monty Turner  
Lisa Ungar and  
Robert Fridrich  
Tom Warne  
Mary and Bill Way  
Marion Weber  
Janice Wezelman and  
David Bartlett  
Lois Wienshienk  
Jana and Mark Wilcke

## Patron

**\$250 - \$999**

Anonymous (15)  
William Ahearn  
Mary Aherns  
Pauline Albert  
Jill and Armando Alfaro  
Jessica L. Andrews and  
Timothy W. Toothman  
Marilyn and Greg Anthony  
Lynn Argetsinger  
Gregory Ash and Susan  
Johnson-Ash  
Lyn Ashton and Herbert  
Stevenson  
Carolee and Daniel Asia  
Mara and Keith Aspinall  
Eva Bacal  
Pamela and Frank Bangs  
Jeannette and Robert Barnes  
Robin and Kent Batty  
Clare and Duane Baylor  
John Bechman  
Dr. Cash and Susanne  
Beechler  
Jeffrey F. Berg and  
Debra H. Paget  
Kathleen and Bill Bethel  
Elizabeth Blair  
Betsy Bolding  
Meredith and Stephen Bolduc  
Carl and Charles Borkan  
Ellen Brackman

Michael Bradford and  
Maikel Lahera Montero  
Jonathan and Carol Bradley  
Martha Brightwell  
Diane and Donald Bristow  
Sallee Britton  
Suzanne and Don Brown  
Mitchell Bunting and  
Michael Heimbuch  
Bonnie and David Burnett  
Patrick Butler and Debbie  
Goodman-Butler  
Burton Cagen  
Diana and Jay Caldwell  
Michael Candela and Dr.  
Marsha Brooks-Candela  
Karen and Jim Carlson  
Patricia and Jon Carlson  
Linda and Ray Carson  
Geraldine Cass  
Elaine and Morton  
Cederbaum  
Pete Celaya and  
Charlene Vasquez  
Dr. Jay and Betty Citrin  
Jill and Kipp Clark  
Stacey and David Cohen  
Arlan Colton and Jeff Ramos  
Jennifer and Jay Cook  
Jan Copeland  
Lynn Corrigan  
Andrea and Harry Crane  
Paula and Michael Culbert  
James Cummins  
Sandy Czacher  
Sherry Dailey  
Lawrence C. Dennis  
Carol Des Cognets  
Susan and Barclay Dick  
Carole and David Drachler  
Diane Drewery and Don Wilks  
Carrie and Chuck Durham  
Mary and John Enemark  
Gordon Stewart Ewy  
Shera Farnham  
Alan Citrin and Cindy Ferro  
Ronna Fickbohm  
and Jeff Willis  
Nancy and Richard Fintzy  
Mary Jo Fitzgerald  
Lucille Flaaten and Jan Olav  
Katherine Fogel  
Sarilyn and Sherman Fogel  
Kathy Garrett  
Rebecca and David Gaspar  
Claire Genser

# INDIVIDUAL DONORS

Barry Gillaspie  
Bruce Gillaspie  
Miriam and Richard Glabman  
Ann Goldberg  
Midge and Gerald Golner  
Frank Goodyear  
Paulette and Joe Gootter  
Julia Gordon  
Dr. Robert W. Gore  
Stephen N. Graff  
Dennis Grether and  
Catherine Kelly  
Ruth Ann and Thomas Gribb  
Pamela Grissom  
Jennifer Gross  
Ann and Mike Guilfoy  
Anjeleen and Harry Gumer  
Jerome and Anita Gutkin  
Sara and Andrew Gyorke  
Rita Hagel  
Jacob Halliday  
Michael Hamant MD and  
Lynnell Gardner MD  
Robin and John Harris  
John Hay and Ruth Murphy  
Candy and Jeffrey Hazan  
Pat and John Hemann  
Bill Hemelt and Anne Leary  
Bette Henriques  
James Herzfeld  
Susan Hetherington  
Marcia and Gregory Hilliard  
Sarah Hiteman  
Lynn R. Hoffman  
Marta and Robert C. Holl  
Dr. and Mrs. Barry Holt  
Gerri and Barry Holt  
Lisa and Gary Israel  
William Jacobs  
Caroline Jank  
Mary and Thomas Johnson  
Pam Johnson  
Richard and Shirley Johnson  
Joanne and Paul Johnston

Denise Just  
Robin and Michael Kaiserman  
Hy Kaplan and Sue Vardon  
Guinn and Nate Kappler  
Julie Karcis and  
James Seward  
Fran and Jeff Katz  
Louise and Joseph Keane  
Lendre and King Kearns  
Martha and George Kellner  
Cynthia and Alan Kempner  
Barbara and Jay Kittle  
Stephen Klaffer  
Suzan-Oda and Bill Knese  
Michael Kramer  
Tamar Rala Kreiswirth  
and John DeLuca  
Karen and Arvie Lake  
Sally Lanyon and  
Paul Hawkins  
Katharine and John Lauder  
Joan Le Fevre  
Ellen and Philip Leavitt  
Mickey and Jeff Leonard  
Dr. Alan Levenson and  
Rachael K. Goldwyn  
Lori Levine and Gary Benna  
Bertie Levkowitz and  
Thomas Herz  
Marcia Lindley  
Susan Markovich  
Sandra Marshall and  
Gerald Maggiora  
Lorane and Patrick Martin  
Daniel Matlick  
Shirley and Stanley Matlick  
Ann and George Mavko  
Sandra McNabb  
Eleanor and George Mink  
Andrea Molberg and  
Hank Greenleaf  
Virginia and David Morthland  
Linda and Donald Mower  
Peggy and Timothy Mulcahy

Barbara and Larry Nelson  
Alice and Edward Neuwirth  
Margie Nicholson  
Terence Nordahl  
Benjamin Norton  
Michael and Patricia Ore  
Jones Osborn and  
Stephanie Mullins  
Susan and Chuck Ott  
Suzanna and Steve Pangburn  
Esther M. Pasalis  
Jane and William Pearson  
Alyce Pennington  
Sheila Peress and John Velez  
Clyde and Jane Perlee  
Jeanne Pickering and  
Mike Andrew  
Emily Rosenberg Pollock  
Noah Pollock  
Valerie and Herschel Richter  
Kathy and Jack Rife  
Drs. Linda Riordan  
and David Siegel  
Denise and Curt Robinson  
Alice and Bill Roe  
Anne Roediger  
Quinta and Philip Rosenberg  
Shirley and Thom Rossa  
Mira and Kent Rossman  
Sandra Rutherford  
Donna and Darrell Sabers  
Barbara Sattler and  
Ken Hegland  
Judy and Michael Schaffert  
Eric Scharf  
Sally and Robert Schlew  
Patricia and Harry Schlosser  
Marge Schneider  
and Ed Shirley  
Elizabeth Schulman  
Robyn and Edward Schwager  
Arleen and Fred Schwartz  
Dr. Howard and  
Trudy Schwartz

Polly and Joe Seeger  
Isaac Shaw  
Betty Shelby  
Bill Sheppard and Range Shaw  
Michael Sillaryman and  
Amy Gittler  
Raj Sivananthan and  
Linda Kay Wolfkeil  
Cathleen and Bill Small  
Patricia and Mark Smallsreed  
Glenn Smith  
Joyce and Jim Smith  
John Smith  
Richard Snodgrass and  
Merrie Brucks  
Richard Snyder and  
Linda Jensen  
Jennifer and Michael Spencer  
Rica Spivack  
Bob Stankus and  
Lynne Lagarde  
David Steele  
Claire Steigerwald  
Darryl and Helen Stern  
Patricia Stewart  
Olga and James Strickland  
Charles H. Strub  
Michael and Jeanne Sturgis  
Laura Sullivan  
Lori and Richard Surina  
Hugh and Allyn Thompson  
Gayle A. Traver  
Catherine and Bruce Uhl  
Lisa Ungar and Robert Fridrich  
Rick Unklesbay and  
Margaret Norem  
Gary Waugh  
Mary and Ronald Weinstein  
Wendy and Elliott Weiss  
Nancy and Peter White  
Barbara Wich  
Mary and John Wilber  
Don Wilks and Diane Drewery  
Edwin Zimmermann

## LAND ACKNOWLEDGMENT STATEMENT

Arizona Theatre Company recognizes the rich history of the 22 American Indian communities in Arizona.

It is important to understand the cultural history of the land and our place within that history.

We invite you to learn more by visiting local cultural sites like the Heard Museum: [heard.org](http://heard.org)  
or the Amerind Museum: [amerind.org](http://amerind.org), among others.



## INDIVIDUAL DONORS

List reflects donations made July 1, 2023 to September 18, 2024

### GIFTS IN HONOR OF

**Matt August** by Armin Shimerman and Susan and Jeffrey Rein

**Beverley Arrington** by Florence and Tony Franklin

**Gertrude Barnes** by Beverly Arrington

**Bill Bethel** by Shelby and Linda Silverman and Martha Castleberry

**Betsy Bolding** by Dorothy Kret and Kathleen and Bill Bethel

**Aune DeWitt** by Schuyler DeWitt

**Mary Ann and Darryl Dobras** by Sara Jane and Ben Norton

**Pat Engels** by Barbara Provus and Fred Wackerle, and Dennis Grether and Catherine Kelly, Barbara Molotsky, and Polly Jensen, Mallory and Donald Riegger, and Mary Goldstein

**Deanna Evenchik-Brav** by Fran and Jeff Katz

**Robert and Laurie Glaser** by Debbie Goodman-Butler and Patrick Butler

**David Ira Goldstein** by Joel and Cathy Bez

**Jeff Guldner** by Mallory Lebovitz

**Rita Brown Herold** by Judy Warren

**The Connie Hillman Foundation** by Anonymous

**Tim Janes** by Katherine Gregg and Maureen Metcalfe

**Jodi Kammerer** by Kevin Kammerer

**Joshua Kassel** by Anonymous

**Michael and Beth Kasser** by Carolee and Daniel Asia, Jarvis Foundation, and Loretta and Chacho Romero

**Anne Kleindienst** by Bill Sheppard and Range Shaw

**Kit and Joan Marrs** by DRD Investment Group, LLC

**Emily Muirhead** by Julie Muirhead

**Jack O'Brien** by Armin Shimerman

**Carley Elizabeth Preston** by Susan Markovich

**Emily Rosenberg Pollock** by Betsy Bolding

**Mary Beth Radke** by Anonymous

**Susan and Jeffrey Rein** by Anonymous, Dana Narter and Ed Baruch, and Phil and Gloria Cowen

**Rosemary Samuelson** by Wayne Samuelson

**James Sullivan** by Marie Darmer

**Paula Taylor** by Susan and Jeffrey Rein

**Laura Thomas** by Deborah Haeseler

**Geri Wright** by Kay and Walter Oliver and Susan and Jeffrey Rein, and Anonymous

### GIFTS IN MEMORY OF

**Betty Bublitz** by Anonymous

**Angus E. Burke** by Pamela and Dennis Winsten

**Bruce Davis** by Irene and Oscar Rockhold, Kerri and Shaun Druckmiller, Louise and James Weiss, Anonymous, and Barbara Unger and Ted Sakano

**Frank Davis** by Bill Sheppard and Range Shaw

**Nick Candela** by Michael Candela and Dr. Marsha Brooks-Candela

**Mason Carr** by Julie Goddard

**Marcia DelTorto** by Colleen Dunne

**Kathleen Flasch** by Frank Flasch

**Steve Goulding** by Peggy Goulding

**Francis Jank** by Caroline Jank

**Lucia Mar** by Maria Mar

**June J.C. Martin** by Diana and Jay Caldwell

**Celia McMurry** by Anonymous

**Deanne Molitor** by Lynn Corrigan

**Elsiene Schneider** by David Schneider

**Marjorie Sharp** by Jean Beck

**Geri Silvi** by Jennifer and Michael Spencer

**Larry Smith** by Bill Sheppard and Range Shaw

**Richard Stahl** by Bill Sheppard and Range Shaw

**James Sullivan** by Laura Sullivan, Marie Darmer, Deborah Haeseler, Sarajeen and Jeri Harwood, Rona Rosenberg, and Anonymous

**Ray Tevis** by Anonymous

**Larry Tippie** by Anonymous

**Patsy Waterfall** by Quinta and Philip Rosenberg

**Frances Yee and Henry Kelly** by Anonymous

## Continue ATC's Legacy by Becoming a Donor Today!

Join others in ensuring that ATC continues to play a vital role in the cultural vibrancy of our community ... engaging and inspiring thousands of students, employing professional theatre artists, and providing abundant outreach programs across the state.

**Donate at [atc.org/give](https://atc.org/give) or call 520-463-7669.**



# INDIVIDUAL DONORS

## LEGACY SOCIETY

Honors those friends of ATC who have established a gift through a bequest, trust arrangement, or other estate plan provision.

Anonymous\*

Anonymous

Jessica Andrews and

Timothy W. Toothman

Cameron and Mary Artigue

Helen and Robert Begam\*

Nathaniel and Suzanne

Bloomfield

Dr. and Mrs. James F. Blute, III

Betsy Bolding

Thomas Chapman

Steven Cohen and

Michael Godnick

Jacklyn Connoy and

William Maguire

Len\* and Doris Coris

The Estate of Frank K. Davis\*

Slivv Edmonds\*

Pat Engels

Bob and Nancy Eschrich

Carol Fink

Michael O. Flatt\*

Ted and Barb Frohling

Harry and Lois Garrett

Dr. Mary Jo Ghory

Chester and Ann Goldberg\*

Mr. Terrance M. Hanson

Mr. and Mrs. Edward J. Harrison

Andrew F. Holtz

Jacqueline Hufford-Jensen

and Gregory Kroening

I. Michael and Beth Kasser

Dr. Philip Keller\*

Bill and Kathy Kinney

Gregory Kroening

Maxine and Jonathan Marshall\*

Joan A. Morris

Peggy and Gerry\* Murphy

Terry and Jerry Neuman

Don\* and Peg Nickerson

Martha and Terry Allen Perl

Endowment for the Arts

Ronald Robinette and

Sharon Roediger

Arnold and Carol Rudoff

Robert V. Schauer and

Melvin E. Mounts\*

William C\* and Deborah

Chisholm Scott

F. William Sheppard

Daniel J. and Evelyn G. Simon

Richard P. Stahl\*

Robert\* and Shoshana Tancer

Marlene Tompkins

and James Pyne

Roy Van Note

Virginia A. Weise\*

Mark and Taryn Westergaard

Maggie White

Richard H.\* and Linda Whitney

\* deceased

## ATC'S LEGACY SOCIETY

The future is made more certain  
by those who invest in it.



Cast of *Fiddler On The Roof*. Photo: Tim Fuller.

ATC's Legacy Society was established to recognize individuals who have made a planned gift to ensure the Company's vision lives on well into the future.

Whether you contribute through a bequest in a will or trust, or a beneficiary designation on your retirement account, life insurance, or other estate-planning vehicle, your legacy gift ensures that ATC continues to bring world-class theatrical productions to our stages, reaching generations for years to come.

### LEGACY SOCIETY BENEFITS:

- Recognition in the ATC program book for the entire season.
- Exclusive updates from our Artistic department throughout the season.
- Exclusive invitation to our annual Legacy Society Luncheon event.

**atc**

ARIZONA  
THEATRE  
COMPANY

# Inspiring Greatness One Gift at a Time

Support Arizona Theatre Company today and be the driving force behind unforgettable performances, student matinees, and community outreach. Your donation propels us into a new era of creativity and impact.

**DONATE NOW AND  
LET'S CREATE EXTRAORDINARY  
MOMENTS TOGETHER!**

Lillie Langston, Karmine Alers, Danny Bass, & Shuler Hensley in ATC's 2023/2024 production of *Scrooge!* Photo: Tim Fuller.

## WAYS TO GIVE

SNAP: **CODE ON THE RIGHT**

CALL: **520-463-7669**

ONLINE: **ATC.ORG/GIVE**

POST: **PO BOX 61893 PHOENIX, ARIZONA 85082**





# TCA SERVICES & FACILITIES

## THEATER INFORMATION

Opened in 2007, Tempe Center for the Arts houses a state-of-the-art, 600-seat proscenium theater, a 200-seat studio theater and a 3,500-square-foot gallery. The following services and policies ensure your comfort and enhance your experience at the theater.

### THEATRE POLICIES

**Latecomers** – Latecomers will be seated only at an appropriate and predetermined break in action. In order not to disturb patrons who are already enjoying the performance, latecomers may be seated in alternate locations until intermission.

**Cameras** – As a courtesy to our patrons and the actors, the use of cameras and recording devices is not permitted within the theater during the show.

**Cellphones, Smart Watches & Light/Sound-emitting Devices** – Please silence or turn off all cellphones, digital watches, or any other noise-making or light-emitting devices for the courtesy of other patrons and the actors.

**Children** – Children under 5 are not permitted in the theater during performances.

**Smoking** – Smoking is strictly forbidden in City of Tempe facilities. Receptacles are located outside the main entrance.

### THEATER SERVICES

**Accessibility** – Tempe Center for the Arts provides a variety of accessible services in the lobby and accommodations including, but not limited to:

- Accessible parking
- Accessible/family restrooms
- Listening devices – Available on request in the lobby
- Accessible seating available on all levels
- Seating assistance – Please contact a TCA Experience Team member

**Elevators** – Elevators are located on the west end of the lobby and serve all three patron levels.

**Restrooms** – Restrooms are located on the first and second levels and are accessible to patrons with disabilities.

**Eat & Drink** – Food and beverages are available in the lounge through intermission. Please use trash and recycling receptacles at all entrances.

**Lost & Found** – For assistance, see an Experience Team member or call 480-350-2883 the following day.

**Captioning** – Coordinated with the action onstage, those in open-captioned seating will be able to read the play's dialogue displayed large letters on an LED screen. For open-captioned performance dates, contact the ATC Ticket and Information Office at 833-ATC-SEAT.

700 W. RIO SALADO PARKWAY TEMPE, AZ 85281  
480.350.2822 | TEMPECENTERFORTHEARTS.COM



# Welcome to the new home of Arizona Theatre Company



## EXPERIENCE TCA

Art. Music. Dance. Theatre.

tcca

something  
for  
everyone



SEE  
WHAT'S  
COMING

480-350-2822  
[tempecenterforthearts.com](http://tempecenterforthearts.com)



Tempe Center for the Arts

come early  
and see free  
gallery  
exhibitions,  
enjoy drinks  
in the lounge,  
and visit the  
rooftop  
terrace.



## BEHIND THE SCENES: THE FIRST DAYS OF REHEARSAL



Left to Right: Awesta Zarif, Michael John Garcés, Chelsey Jean Smith, Lucy Lavelly



Left to Right: Peter Howard, Lucy Lavelly



# BEHIND THE SCENES: THE FIRST DAYS OF REHEARSAL



Left to Right: Aaron Cammack, Michael John Garcés



Left to Right: Peter Howard, Michael John Garcés



Michael John Garcés



Left to Right: Awesta Zarif, Dan Domingues

# atc

A R I Z O N A  
T H E A T R E  
C O M P A N Y

Check Out ATC's Social Pages and  
Connect With Other Theatre Fans!



[Facebook.com/arizonatheatrecompany](https://Facebook.com/arizonatheatrecompany)



[instagram.com/arizonatheatre](https://instagram.com/arizonatheatre)



[tiktok.com/@arizonatheatre](https://tiktok.com/@arizonatheatre)



[linkedin.com/company/arizonatheatrecompany](https://linkedin.com/company/arizonatheatrecompany)



[threads.net/@arizonatheatre](https://threads.net/@arizonatheatre)



[x/arizonatheatre](https://x/arizonatheatre)



**ATC.ORG / 833-ATC-SEAT**



Geoffrey F. Belliston & Shuler Hensley in ATC's 2023/2024 production of *Scrooge!*. Photo: Tim Fuller.

Recognized as the Official State Theatre of Arizona with a legacy started in 1966, ATC has an unwavering commitment to delivering exceptional theatrical experiences to the communities of Tucson and Phoenix. As the sole LORT (League of Resident Theatres) professional nonprofit regional theatre in Arizona, ATC proudly sets the gold standard for artistic excellence and innovation.

ATC is led by Executive Director Geri Wright and Kasser Family Artistic Director Matt August. Each season, ATC employs world-class artists to produce professional theatre, reaching an audience of over 130,000 patrons through mainstage productions, student matinees, and community outreach.

## MISSION

Arizona Theatre Company's mission is to  
create world-class theatre about  
what it means to be alive today –  
inspiring curiosity and creativity,  
sparking empathy and joy –  
bringing all Arizonans together.

## VISION

Arizona Theatre Company's vision is to  
transform the lives of every Arizonan  
through the power of theatre.

**atc**ARIZONA  
THEATRE  
COMPANY**12/7/24 - 12/28/24****ATC's Holiday Musical**SHULER HENSLEY is  
**SCROOGE!****atc**ARIZONA  
THEATRE  
COMPANY

Adapted from the Oscar-nominated film *Scrooge* comes a Christmas musical spectacular by Oscar-winning, Grammy-winning, and Tony-nominated composer Leslie Bricusse. Tony Award Winner Shuler Hensley stars as Ebenezer Scrooge in this groundbreaking adaptation of Charles Dickens' *A Christmas Carol* filled with songs that are as impressive as the ones Bricusse wrote for *Willy Wonka and the Chocolate Factory*. The story follows the miserly Scrooge as he goes on a fantastical journey through his life over the course of a single Christmas Eve night. After a warning from the ghost of his business partner Jacob Marley, the Ghosts of Christmas Past, Present, and Future take Scrooge on a musical adventure that leads him towards his hopeful redemption. In a new version created uniquely for ATC, *Scrooge!* is the perfect holiday fare for families and audiences of all ages.

**ATC.ORG / 833-ATC-SEAT**

ATC AT TEMPE CENTER FOR THE ARTS 700 W. RIO SALADO PKWY, TEMPE

Scan QR Code  
for more details  
or visit **atc.org**



Cast of ATC's 2023/2024 production of *Scrooge*. Photo: Tim Fuller.

## ATC supports its vital mission with these key initiatives:

### ATC Mainstage

Each season, ATC produces five mainstage productions, bringing together the best talent from across Arizona, the country, and the world. ATC playwrights, directors, designers, actors, and production teams represent the finest artists and technicians working today.

### Engagement in Phoenix and Tucson ... and Beyond

ATC operates in two major cities, unlike any other LORT theatre in the country, providing a place for communities across Arizona to gather, share, and explore the art-making process, reaching beyond the metropolitan areas of Tucson and Phoenix, and enriching the theatre learning experience for all.

### New Play Development

ATC provides playwrights and theater makers, both locally and nationally, a place to develop their work. Through workshops and readings, we give artists a place to incubate and launch productions, both at

ATC and beyond. ATC is also proud to support emerging voices with the annual National Latine Playwrights Award and Festival.

### Education and Outreach

ATC delivers inspiring experiences in a number of ways, both connected to our stages and beyond our walls, in schools, and across the state. Core programs of our education efforts include Student Matinees, playguides, and post-show discussions.

### Living Our Values (LOV) Initiative

We strive to put our values at the center of who we are and what we do – continuously connecting our audiences, artists, staff, and stakeholders to our core values, creating a true sense of belonging, equity, and diversity within the organization and the communities we serve. Nowhere is this more important than the work we build and perform on our stages.



**Geri Wright**  
Executive Director

**Matt August**  
Kasser Family Artistic Director

## ARTISTIC & PRODUCTION

**ASSOCIATE PRODUCER**  
Matthew Wiener

**PLAYWRIGHT-IN-RESIDENCE**  
Elaine Romero

**2024/2025  
RESIDENT ARTIST**  
Aaron Cammack

**PRODUCTION MANAGER**  
Jamie S. Lara

**ASSOCIATE  
PRODUCTION MANAGER**  
Sheldon Lane

**ASSISTANT  
PRODUCTION MANAGER**  
Emma Prange

### SCENERY

**TECHNICAL DIRECTOR**  
Arthur Potts

**ASSISTANT TECHNICAL  
DIRECTOR**  
Jared Strickland

**LEAD CARPENTER**  
John Crain

**CARPENTERS**  
Larry McDonald  
Cory Walters

### PAINTS

**CHARGE SCENIC ARTIST**  
Charlotte Alcorn

**ASSISTANT CHARGE  
SCENIC ARTIST**  
Sammie Nickel

### PROPERTIES

**PROPERTIES SUPERVISOR**  
Faith Boucher

**PROPERTIES ARTISAN**  
Aidyn Corkell

**PROPERTIES & SCENIC  
CARPENTER**  
Miguel Barragan

### COSTUMES & WARDROBE

**COSTUME DIRECTOR**  
Shelly Williams

**ASSISTANT  
COSTUME DESIGNER**  
Lindsay McDonald

**LEAD DRAPER**  
Phyllis Davies

**FIRST HAND**  
Mae Huebbe

**STITCHER**  
Sarah Willwater

**INTERIM WIG & MAKEUP  
SUPERVISOR**  
Bryon McDonald

**COSTUME CRAFTS ARTISAN**  
Sandahl Tremel

**WARDROBE SUPERVISOR**  
Jacob Miller

**TEMPE/PHOENIX  
WARDROBE SUPERVISOR**  
Cameo Gustafson

### ELECTRICS & PROJECTIONS

**LIGHTING & PROJECTIONS  
SUPERVISOR**  
Tiffer Hill

**LEAD ELECTRICIAN**  
Allison Gammons

**STAFF ELECTRICIAN**  
Ryan Darland

**TEMPE/PHOENIX  
LIGHT BOARD OPERATOR**  
Wade Yorke

### SOUND

**SOUND SUPERVISOR**  
Mathew DeVore

**PRODUCTION SOUND  
ENGINEER**  
Alexis Glas

**INTERIM TEMPE/PHOENIX  
SOUND ENGINEER**  
Nadia Chacon

### STAGE MANAGEMENT & CREW

**PRODUCTION ASSISTANTS**  
Savannah Gersdorf  
Mandy Spartz

**TEMPE/PHOENIX  
THEATRE GENERALIST**  
Anthony Muldrow

## ADMINISTRATION

**GENERAL MANAGER**  
Julie Fancher

**CHIEF OF STAFF**  
Charlene Vasquez

**DIRECTOR OF OPERATIONS  
AND EVENTS**  
Nick Cianciotto

**COMPANY MANAGER**  
Cat Tries

**ASSOCIATE COMPANY  
MANAGER / EDUCATION  
OUTREACH**  
Mary-Jo Okawa

**DEVELOPMENT &  
MARKETING**

**CHIEF DEVELOPMENT  
AND MARKETING OFFICER**  
Paula Taylor

**DIRECTOR OF ANNUAL  
FUND AND STEWARDSHIP**  
Carley Elizabeth Preston

**DIRECTOR OF DONOR  
RELATIONS**  
Cami Cotton  
Debbie Hickey

**GRANTS MANAGER**  
Gretchen Pace

**DIRECTOR OF MARKETING**  
Bitty Rosenberg

**CREATIVE AND  
BRAND MANAGER**  
Richard Giuliani

**MARKETING OUTREACH  
COORDINATOR**  
Ethan Hoover

**DIGITAL STORYTELLER  
& PUBLIC RELATIONS  
MANAGER**  
Marina Nelson

**DIGITAL MARKETING  
COORDINATOR**  
Nicholas Kuhn

### FINANCE

**CHIEF FINANCIAL  
OFFICER**  
Mark Kochman

**SENIOR ACCOUNTANT**  
Nancy Kilmer

**ACCOUNTING  
COORDINATOR**  
Patricia Walter

**BOX OFFICE &  
HOUSE MANAGEMENT**

**DIRECTOR OF  
PATRON SERVICES**  
Juliet Martin

**ASSISTANT DIRECTOR OF  
PATRON SERVICES**  
Linda Schwartz

**PATRON SERVICES MANAGER**  
Richard Ragsdale

**ASSISTANT BOX  
OFFICE MANAGERS**  
Carrie Luker  
Keith LaSpaluto

**PATRON SERVICES  
ASSOCIATES**  
Katelin Andrews  
Sophia Nagore  
Sarah Smiley  
Gadija Samie  
Wendy Sander

**HOUSE MANAGER**  
Bill Bethel

### FACILITIES

**FACILITIES MANAGER**  
Horace Ashley

**MAINTENANCE SUPERVISOR**  
Dean Morgan

**MAINTENANCE TECHNICIAN**  
Jose Varela

**BAR STAFF**  
Xia Monet  
Caitlin Pepe  
Zoe Soleil  
Fran Greer



This Theatre operates under an agreement between the League of Resident Theatres and Actors' Equity Association, the Union of Professional Actors and Stage Managers in the United States.



The Director and/or Choreographer is a member of the Society of Stage Directors and Choreographers, Inc., an independent national labor union.



Scenic, Costume, Lighting, and Sound in LORT Theatres are represented by Union Scenic Artists Local USA-829, IATSE.





## BOARD OFFICERS

Pat Engels, *Chair*  
Debra Larson, *Chair Elect*  
Kay Oliver, *Secretary*  
Adam Michael, *Treasurer*

## BOARD OF TRUSTEES

Beverly Arrington  
Matt August, *Kasser Family Artistic Director*  
Brian Boylan  
Michael Bradford  
Deanna Evenchik-Brav  
Hugh Hallman  
Stephen Heitz  
Brian Jorgensen  
Michael O'Connor

Analise Ortiz  
Mary Beth Radke  
Don Riegger  
Joan Sherwood  
Erica Stutman  
Andy Watson  
Karen Wohlgemuth  
Geri Wright, *Executive Director*

## EMERITUS TRUSTEES

Char Augenstein, *Chair Emeritus*  
Paul Baker  
Katie Dusenberry

Lynne Wood Dusenberry  
Darryl Dobras  
Shirley Estes

I. Michael Kasser  
Dr. John Schaefer  
F. William Sheppard

---

Jessica L. Andrews, *Managing Director Emeritus*

David Ira Goldstein, *Artistic Director Emeritus*

---

2/22/25 - 3/9/25

"Honoring Legends of the past with contemporary panache, *Blues in the Night* is a wonderful night out."

— Stage and Cinema

# BLUES IN THE NIGHT

FEATURING THE MUSIC OF  
BESSIE SMITH, DUKE ELLINGTON, JOHNNY MERCER, HAROLD ARLEN,  
ALBERTA HUNTER, JIMMY COX, IDA COX, AND MORE!



**atc**  
ARIZONA  
THEATRE  
COMPANY

CONCEIVED AND  
ORIGINALLY DIRECTED BY **SHELDON EPPS**  
ORIGINAL VOCAL ARRANGEMENTS  
AND MUSICAL DIRECTION BY **CHAPMAN ROBERTS**  
ORCHESTRATIONS AND ADDITIONAL  
VOCAL ARRANGEMENTS BY **SY JOHNSON**

***Soulful.  
Evocative.  
Timeless.***

A musical celebration of the blues and its influence on American music, this toe-tapping revue weaves the stories of three women and one man as they navigate love, heartbreak, and rebirth. Set in a swanky 1930s Chicago hotel, this emotionally uplifting story features 26 of the hottest torch numbers by blues and jazz icons like Bessie Smith, Johnny Mercer, Harold Arlen, Duke Ellington, Billy Strayhorn, Ida Cox, and Benny Goodman, to name a few. Come celebrate a uniquely American music genre on this powerful and uplifting journey through the hearts of four of the country's best crooners and a dozen of America's best composers.

**ATC.ORG / 833-ATC-SEAT**

ATC AT TEMPE CENTER FOR THE ARTS 700 W. RIO SALADO PKWY, TEMPE



Scan QR Code  
for more details  
or visit **atc.org**

4/19/25 - 5/4/25

A WORLD PREMIERE!

# BOB & JEAN

A LOVE STORY



**atc**  
ARIZONA  
THEATRE  
COMPANY

BY ROBERT SCHENKKAN  
DIRECTED BY MATT AUGUST

***Nostalgic.  
Romantic.  
Inspiring.***

In the heart of 1940s New York City, Bob and Jean's electric connection is abruptly severed by World War II. Bob becomes a bomb disposal officer in the Pacific, while Jean boosts troop morale as a USO actress. Through passionate and desperate letters, they navigate the trials of war, Broadway, and the human heart. Will their love withstand the chaos of battle and distance? A new play written by Pulitzer Prize- and Tony Award-winning and Emmy-nominated playwright Robert Schenkkan, *Bob & Jean: A Love Story* is a stirring and romantic world premiere that tells the remarkable story of an exhilarating courtship.

**ATC.ORG / 833-ATC-SEAT**

ATC AT TEMPE CENTER FOR THE ARTS 700 W. RIO SALADO PKWY, TEMPE



Scan QR Code  
for more details  
or visit **atc.org**

# 6/14/25 - 6/29/25

“...delightful and entertaining,  
and a good reason to venture out ...”

— *BroadwayWorld*

## Ms. Holmes & Ms. Watson - Apt. 2B



**atc**  
ARIZONA  
THEATRE  
COMPANY

***Fast-Paced.  
Hilarious.  
Mysterious.***

Modern-day adventure awaits with the most iconic detective duo of all time reimagined as a gal-pal comedy in *Ms. Holmes and Ms. Watson - Apt. 2B*. Set in present-day London, depressed American divorcee Dr. Joan Watson moves in with the carefree and eccentric Shirley Holmes, only to find themselves entangled in a series of mysteries, all related to a cunning supervillain who remains one step ahead of them. This twist on Doyle's cherished Sherlock Holmes characters delivers non-stop laughter inside a rollicking murder mystery that promises fun for everyone.

## ATC.ORG / 833-ATC-SEAT

ATC AT TEMPE CENTER FOR THE ARTS 700 W. RIO SALADO PKWY, TEMPE



Scan QR Code  
for more details  
or visit **atc.org**