

# BLUES IN THE NIGHT



**atc**

ARIZONA  
THEATRE  
COMPANY

2024 / 2025

AN ONMEDIA PUBLICATION



////// **BOARD OFFICERS** ////

**Pat Engels**, Chair  
**Debra Larson**, Chair Elect  
**Kay Oliver**, Secretary  
**Adam Michael**, Treasurer

////// **BOARD OF TRUSTEES** ////

**Beverly Arrington**  
**Matt August**, Kasser Family Artistic Director  
**Brian Boylan**  
**Michael Bradford**  
**Deanna Evenchik-Brav**  
**Hugh Hallman**  
**Stephen Heitz**  
**Brian Jorgensen**  
**Michael O'Connor**

**Analise Ortiz**  
**Mary Beth Radke**  
**Don Riegger**  
**Joan Sherwood**  
**Erica Stutman**  
**Andy Watson**  
**Karen Wohlgemuth**  
**Geri Wright**, Executive Director

////// **EMERITUS TRUSTEES** ////

**Char Augenstein**, Chair Emeritus  
**Paul Baker**  
**Katie Dusenberry**  
**Lynne Wood Dusenberry**  
**Darryl Dobras**

**Shirley Estes**  
**I. Michael Kasser**  
**Dr. John Schaefer**  
**F. William Sheppard**

---

**Jessica L. Andrews**, Managing Director Emeritus

**David Ira Goldstein**, Artistic Director Emeritus

---



JANUARY 26 - FEBRUARY 15, 2025

ARIZONA THEATRE COMPANY

**MATT AUGUST**  
KASSER FAMILY ARTISTIC DIRECTOR

**GERI WRIGHT**  
EXECUTIVE DIRECTOR

**BLUES IN THE NIGHT**  
CONCEIVED AND ORIGINALLY DIRECTED BY  
**SHELDON EPPS**

ORIGINAL VOCAL ARRANGEMENTS AND  
MUSICAL DIRECTION BY  
**CHAPMAN ROBERTS**

ORCHESTRATIONS AND  
ADDITIONAL VOCAL ARRANGEMENTS BY  
**SY JOHNSON**

SCENIC DESIGNER  
**EDWARD E. HAYNES JR**

COSTUME DESIGNER  
**MYRNA COLLEY-LEE**

LIGHTING DESIGNERS  
**CRAIG STELZENMULLER**  
**PAUL MILLER**

SOUND DESIGNER  
**DANIEL PERELSTEIN JAQUETTE**

STAGE MANAGER  
**TIMOTHY TOOTHMAN\***

ASSISTANT STAGE MANAGER  
**MYKEL HALL\***

ROLES OF THE WOMAN AND THE GIRL CAST BY  
**MICHAEL DONOVAN CASTING**  
**MICHAEL DONOVAN, CSA**  
**RICHIE FERRIS, CSA**

MUSIC DIRECTOR  
**WILLIAM FOSTER MCDANIEL**

CHOREOGRAPHER  
**HOPE CLARKE**

DIRECTED BY  
**RICARDO KHAN**

*Blues in the Night* is presented through special arrangement with Music Theatre International (MTI).  
All authorized performance materials are also supplied by MTI.  
[www.mtishows.com](http://www.mtishows.com)

\*Member of Actors' Equity Association, the Union of Professional Actors and Stage Managers in the United States

INDIVIDUAL PRODUCTION SPONSOR: **KAY AND WALTER OLIVER**  
CORPORATE PRODUCTION SPONSOR: **RBC WEALTH MANAGEMENT**  
SEASON SPONSOR: **I. MICHAEL AND BETH KASSER**  
CORPORATE SEASON SPONSOR: **LAVIDGE**  
PRODUCTION PARTNER: **TUCSON DESERT SONG FESTIVAL**  
COMMUNITY SUPPORT: **CULTURAL ARTS NETWORK**



CAST (IN ORDER OF APPEARANCE)

THE LADY FROM THE ROAD . . . . . ROZ WHITE\*
THE WOMAN OF THE WORLD . . . . . APRIL NIXON\*
THE GIRL WITH A DATE . . . . . CAMRYN HAMM\*
THE MAN IN THE SALOON . . . . . DARRYL REUBEN HALL\*

\*Member of Actors' Equity Association, the Union of Professional Actors and Stage Managers in the United States

BAND

PIANO/CONDUCTOR . . . . . WILLIAM FOSTER MCDANIEL
BASS . . . . . DYLAN DEROBERTIS
PERCUSSION . . . . . LAND RICHARDS
TRUMPET . . . . . ROSS DANIELS
WOODWINDS/REEDS . . . . . MICHAEL WEISS

UNDERSTUDIES (IN ALPHABETICAL ORDER)

BROOKE LEIGH DAVIS - THE WOMAN OF THE WORLD, THE LADY FROM THE ROAD;
JOHN HENDERSON - THE MAN IN THE SALOON; KRYSTAL POPE - GIRL WITH A DATE

ADDITIONAL STAFF

ASSOCIATE LIGHTING DESIGNER
OLIVIA LOVERDE

THERE WILL BE ONE 15-MINUTE INTERMISSION

On this original Arizona Theatre Company production, the ATC Production Staff is responsible for scenic construction, costume construction, lighting, projections, sound, props, furniture, wigs, scene painting, and special effects.

Cell phones and other devices that make a noise or emit light can greatly disturb your fellow audience members and the performers. PLEASE TURN THEM OFF before the performance.



This Theatre operates under an agreement between the League of Resident Theatres and Actors' Equity Association, the Union of Professional Actors and Stage Managers in the United States.



The Director and/or Choreographer is a member of the Society of Stage Directors and Choreographers, Inc., an independent national labor union.



Scenic, Costume, Lighting, and Sound in LORT Theatres are represented by Union Scenic Artists Local USA-829, IATSE.

## ACT ONE

- "BLUE BLUES"** ..... **THE WOMEN**  
by Bessie Smith; by permission of Frank Music Corp.
- "FOUR WALLS (AND ONE DIRTY WINDOW) BLUES"** ..... **THE MAN AND THE LADY**  
by Willard Robinson; by permission of The Jewel Music Publishing Co., Inc.
- "I'VE GOT A DATE WITH A DREAM"** ..... **THE WOMEN**  
by Mack Gordon and Harry Revel; by permission of SBK/Feist Catalog, Inc.
- "NEW ORLEANS HOP SCOP BLUES"** ..... **THE LADY**  
by George W. Thomas; by permission of Jerry Vogel Music Co., Inc.
- "STOMPIN' AT THE SAVOY"** ..... **THE WOMAN**  
by Benny Goodman, Razaf, Edgar Sampson, and Chick Webb; by permission of SBK Robbins, Catalogue, Inc. and RYTVOC, Inc.
- "TAKING A CHANCE ON LOVE"** ..... **THE GIRL**  
by Vernon Duke, John LaTouche, and Ted Fetter; by permission by SBK Miller Catalogue, Inc.
- "IT MAKES MY LOVE COME DOWN"** ..... **THE WOMEN**  
by Bessie Smith; used by permission of Frank Music Corp.
- "LUSH LIFE"** ..... **THE WOMAN AND THE MAN**  
by Billy Strayhorn; used by permission of Tempo Music, Inc.
- "I'M JUST A LUCKY SO-AND-SO"** ..... **THE MAN**  
by Duke Ellington and Mack David; used by permission by T.B. Harms Company, a Polygram International Music Publishing Company and Famous Music Publishing Company
- "TAKE ME FOR A BUGGY RIDE"** ..... **THE LADY**  
by Leola and Wesley Wilson; used by permission of Frank Music Corp.
- "WILD WOMEN DON'T HAVE THE BLUES"** ..... **THE LADY AND THE MAN**  
by Ida Cox; used by permission of Northern Music Company
- "LOVER MAN"** ..... **THE WOMEN**  
by Jimmy Davis, Jimmy Sherman, and Roger "Ram" Ramirez; used by permission of MCA Music Publishing
- "WILLOW WEEP FOR ME"** ..... **THE GIRL**  
by Ann Ronell; used by permission of the Bourne Company
- "KITCHEN MAN"** ..... **THE LADY**  
by Andy Razaf and Wesley Wilson; used by permission of MCA Music Publishing
- "WHEN YOUR LOVER HAS GONE"** ..... **THE WOMAN AND THE GIRL**  
by E.A. Swan; used by permission of Warner Bros., Inc.
- "TAKE IT RIGHT BACK"** ..... **THE WOMEN**  
by H. Grey



# MUSICAL NUMBERS

## ACT TWO

**JAM SESSION (“WILD WOMEN DON’T HAVE THE BLUES”)** ..... **THE BAND**  
by Ida Cox; by permission of Northern Music Company

**“BLUES IN THE NIGHT”** ..... **THE COMPANY**  
by Harold Arlen and Johnny Mercer; by permission of Warner Bros., Inc.

**“DIRTY NO-GOODER’S BLUES”** ..... **THE WOMEN**  
by Bessie Smith; used by permission of Frank Music Corp.

**“WHEN A WOMAN LOVES A MAN/AM I BLUE?”** ..... **THE COMPANY**  
by Johnny Mercer, Gordon Jenkins, and Bernard Hanighen/by Grand Clarke and Harry Akst; used by permission of Chappell & Co., used by permission of Warner Bros., Inc.

**“ROUGH AND READY MAN”** ..... **THE WOMAN**  
by Alberta Hunter; used by permission of Alberta Hunter Music Co.

**“RECKLESS BLUES”** ..... **THE GIRL**  
by Bessie Smith; used by permission of Frank Music Corp.

**“WASTED LIFE BLUES”** ..... **THE LADY**  
by Bessie Smith; used by permission of Frank Music Corp.

**“BABY DOLL”** ..... **THE MAN**  
by Bessie Smith; used by permission of Frank Music Corp.

**“NOBODY KNOWS YOU WHEN YOU’RE DOWN AND OUT”** ..... **THE WOMEN**  
by Jimmy Cox; used by permission of MCA Publishing

**“I GOTTA RIGHT TO SING THE BLUES”** ..... **THE COMPANY**  
by Harold Arlen and Ted Koehler; used by permission of Warner Bros., Inc.

# LETTER FROM KASSER FAMILY ARTISTIC DIRECTOR MATT AUGUST



It is my honor to share with you Sheldon Epps' *Blues in the Night*, directed by the legendary Ricardo Khan. Ricardo is a visionary artist who has had a huge impact on American theatre through his leadership of the Regional Theatre Tony Award-winning

Crossroads Theatre Company. I first encountered his work in 1994 as a young intern, working for peanuts, at a neighboring theatre company. I quickly found myself much more enamored of the work that was being done next door at Crossroads, so to have the opportunity to work with Ricardo, and get to know "Rick," through this process has been nothing short of exhilarating for me. And you'll see that thrill onstage tonight!

Ricardo co-founded Crossroads Theatre Company in 1978 with a mission to champion African American voices and celebrate the diversity of the African diaspora. Under his guidance, Crossroads has become a beacon for artists of color, a platform for stories that resonate across cultures and generations, and a vessel for some of the most impactful works in contemporary theatre. Crossroads was recognized with the 1999 Tony Award for Outstanding Regional Theatre, a testament to the vital role it plays in fostering storytelling that challenges, heals, and unites us.

In addition to its powerful influence on American theatre at large, Ricardo and Crossroads have been instrumental in launching the careers of many iconic Black artists, including August Wilson, Lynn Nottage, Viola Davis, George C. Wolfe, Ruby Dee and Ossie Davis, Gregory Hines, and Ntozake Shange.

Beyond his leadership, Ricardo's own artistry shines in the compelling narratives he directs, often exploring themes of history, identity, and resilience. Integral to many of his creative endeavors

is his collaboration with Hope Clarke, a force of nature in the world of dance and choreography. Hope's extensive experience spans Broadway, opera, and film, and her ability to marry movement with emotion has elevated countless productions, earning her a Tony Award nomination for her work in Broadway's *Jelly's Last Jam* and being the first Black woman to direct Gershwin's *Porgy and Bess*. Together, Ricardo and Hope have crafted a work here with *Blues in the Night* that blends the fluidity of dance with the power of storytelling. Featuring a stunning array of blues classics by icons like Duke Ellington, Bessie Smith, and Harold Arlen, the show captures the struggles, joys, and resilience of the human spirit through music, dance, and vivid characters.

In addition to Ricardo and Hope, this show has been brought together by a first-class design team: Ed Haynes returns this season as scenic designer, having last worked with ATC just last season on *Master Class*, Myrna Colley-Lee returns to ATC, where she designed *Seven Guitars* in the 1996/1997 Season and has designed exquisite costumes customized for each actor; Craig Stelzenmuller and *Scrooge's* Paul Miller join us for lighting; and Daniel Perelstein Jaquette returns to ATC again this season for sound.

ATC is so proud to bring this beautiful production to our stage, sharing the work of ALL these iconic artists as only ATC can – with top-shelf talent and production value. Their contributions to the theatre inspire us to continue telling stories of significance and to champion important voices in everything we do.

Thank you for joining us and for being part of this community!

Matt August  
Kasser Family Artistic Director



# LETTER FROM EXECUTIVE DIRECTOR GERI WRIGHT



Happy 2025!

As we step into this fresh new year, we're reminded of the timeless magic of theatre and the integral role you, our cherished patrons, have played in shaping our journey. For 57 remarkable years, your unwavering support has allowed us to tell stories that resonate, inspire, and connect us all.

This year, we are thrilled to kick off the new year with *Blues in the Night*, a soulful celebration of resilience, passion, and the universal power of music. Set in 1930s Chicago, this musical revue weaves together 26 iconic blues songs that capture the trials and triumphs of the human spirit.

*Blues in the Night* speaks directly to our theatre's history – a story of perseverance, artistry, and community. Just as the blues echoes a deep, collective longing and hope, our 57-year legacy is a testament to the transformative power of storytelling, especially during challenging times.

The new year for ATC also means looking ahead and planning for the 2025/2026 Season. We're deep into the process of finalizing show titles, exploring contract options, developing show artwork and descriptions, creating budgets – all in anticipation of announcing our new season in early March.

We invite you to join us for all our remaining 2024/2025 Season shows – *Bob & Jean: A Love Story* and *Ms. Holmes & Ms. Watson – Apt. 2B* – and to invest in ATC as a Season Tickets subscriber for the 2025/2026 season. We guarantee the journey will be filled with storytelling, deep emotion, laughter, and joy, proving rich personal and collective experiences that provide a powerful means of catharsis and connection.

Thank you for being a part of our story. Here's to another year of unforgettable performances and cherished memories.

Geri Wright  
Executive Director





The music of *Blues in the Night* serves as the lifeblood of the production, weaving together the soulful, passionate, and often heartbreaking narratives of its characters. A jukebox musical at its core, *Blues in the Night* is a rich tapestry of blues and jazz standards from the early 20th century showcasing the timeless artistry of legends such as Bessie Smith, Duke Ellington, Johnny Mercer, and Harold Arlen. These songs transcend their original context, forming the emotional backbone of the story.

Set in the 1930s, the musical uses the blues to explore the lives, struggles, and desires of three women and a saloon singer. Each character's story unfolds through the music with a genre uniquely suited to express the depths of human emotion. With roots in African American history, blues brings authenticity and rawness, allowing audiences to connect deeply with the characters' journeys.

One defining feature of *Blues in the Night* is how music channels its characters' distinct voices. Director Ricardo Khan has said, "The strength of the show lies in the performances," which led ATC to an extensive casting process to make sure each performer could match the energy that *Blues in the Night* requires. The intimate orchestrations ensure that the emotional weight of each song is felt, while dynamic performances keep the energy alive.

What makes the music in *Blues in the Night* particularly striking is its ability to stand alone as a showcase of the blues tradition while seamlessly integrating into the production's fabric. Each song advances the narrative. Whether through the defiance of "Reckless Blues" or the haunting beauty of "I Gotta Right to Sing the Blues," every piece offers a glimpse into a character's soul.

Beyond its narrative role, the music celebrates cultural heritage. By featuring songs from some of the greatest African American composers and performers of the 20th century, the musical honors the blues' legacy and its influence on American music and culture. The production introduces these timeless songs to new audiences, ensuring their stories and emotions endure.

Ultimately, the music in *Blues in the Night* is more than a soundtrack – it is the soul of the show. It captures the blues as a form of storytelling, expressing the inexpressible. Through powerful performances and masterful arrangements, the music invites audiences to experience the characters' joys and sorrows as if they were their own. It's a testament to the enduring power of the blues to connect, heal, and transcend.



# BLUES IN THE NIGHT

## A Soulful Journey Through the Heart of American Blues

*Blues in the Night* is a powerful musical that celebrates the emotional depth and history of the American blues genre. Created by acclaimed director Sheldon Epps, this musical revue blends the raw sounds of blues with deeply human narratives, captivating audiences with evocative storytelling and timeless music. Working with musical director Sy Johnson, Epps curated a setlist that spanned the emotional range of blues, from sultry ballads to high-energy performances. The show features songs by blues legends like Bessie Smith, Duke Ellington, and Cab Calloway, highlighting the enduring connection between blues music and the African American experience.

Unlike traditional musicals, *Blues in the Night* is structured as a revue, using vignettes to tell the stories of three women and one man whose lives unfold through the emotional power of the blues. These heartfelt ballads and lively numbers explore themes of love, heartbreak, resilience, and hope.

*Blues in the Night* debuted on Broadway on June 2, 1982, at the Rialto Theatre. Prior to that, it enjoyed a successful off-Broadway run in 1980, originally staged by Epps and Gregory Hines under the direction of Norman René at Playhouse 46.

The Broadway production received widespread critical acclaim, particularly for its innovative blend of music and storytelling. The revue-style structure, which diverged from traditional musicals, resonated with both audiences and critics. Nominated for a Tony Award for Best Musical, the show secured its place in Broadway history.

*Blues in the Night* also enjoyed success internationally, with a West End production opening in London at the Donmar Warehouse in 1987. Directed by Steve Whately, this production earned several prestigious nominations, including a Laurence Olivier Award for Best New Musical. Carol Woods was nominated for Best Actress for her standout performance.

Since its debut, *Blues in the Night* has had numerous revivals around the world, resonating for its emotional authenticity and timeless themes. It remains a touchstone in musical theater – a celebration of the blues and the human essence. The musical's continued relevance ensures that its legacy endures, introducing new generations to the genre's raw emotional power and cultural significance.

Whether through its groundbreaking Broadway production, successful West End run, or ongoing revivals, *Blues in the Night* remains a defining moment in musical theater. Its lasting impact ensures that the soul of the blues will continue to resonate for years to come.

***Blues in the Night* shows that the blues, like the human spirit, never fades—  
instead, it grows more powerful with time.**

## 10 Iconic Artists Whose Music Brings *Blues in the Night* to Life!



Bessie Smith

**Bessie Smith:** Known as the “Empress of the Blues,” Smith’s soulful voice and emotive performances defined the blues of the 1920s and 1930s. Her songs often told vivid stories of love and hardship, solidifying her legacy as a trailblazer in American music.

**Duke Ellington:** A legendary jazz composer, pianist, and bandleader, Ellington’s innovative style and vast repertoire – including classics like “Mood Indigo” – cemented his status as a cornerstone of jazz history.

**Johnny Mercer:** One of America’s greatest lyricists, Mercer wrote over 1,500 songs, blending humor, wit, and pathos in hits like “Moon River” and “Blues in the Night.”

**Harold Arlen:** Celebrated for his ability to weave jazz and blues into popular music, Arlen composed timeless standards, including “Over the Rainbow” and the titular “Blues in the Night.”

**Billy Strayhorn:** Best known for his collaboration with Duke Ellington, Strayhorn was a master composer and arranger whose works, including “Lush Life,” embody elegance and emotional depth.

**Ida Cox:** A pioneering blues singer and songwriter, Cox brought sophistication and defiance to her performances, earning her the title “Uncrowned Queen of the Blues.”

**Benny Goodman:** Dubbed the “King of Swing,” Goodman revolutionized jazz in the 1930s, blending precision with improvisation in iconic tunes like “Sing, Sing, Sing.”

**Vernon Duke:** A versatile composer known for jazz standards and Broadway hits, Duke wrote classics like “Autumn in New York,” showcasing his gift for evocative melodies.

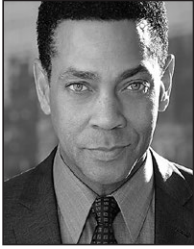
**Gordon Jenkins:** A talented arranger, composer, and conductor, Jenkins is remembered for his lush orchestrations and collaborations with artists like Frank Sinatra and Louis Armstrong.

**Alberta Hunter:** A trailblazing blues singer and songwriter, Hunter’s rich voice and powerful lyrics spanned decades, from the 1920s to her remarkable comeback in the 1970s.



Duke Ellington

**CAST (IN ALPHABETICAL ORDER)**



**Darryl Reuben Hall** (**The Man in The Saloon**) is making his Arizona Theatre Company debut. He has appeared on stages across the globe including Lincoln Center, Carnegie Hall, Radio City Music Hall Christmas Spectacular, and Broadway in *Porgy and Bess*, *Godspell*, and *Cinderella*. He played the role of Paul in *Kiss Me Kate* (Music Theatre of Wichita, Alhambra Dinner Theatre, Repertory Theatre of St. Louis – Judy Award winner), Darryl in *The Civil War* (Ford’s Theatre, Helen Hayes nominated), The Wiz in *The Wiz* (American Stage, Stage Aurora Theatrical Company), *Man in Crowns* (Cincinnati Playhouse), John in *Miss Saigon*, and Flick in *Violet* (Actor’s Playhouse), Pa and Ol’ Mister in *The Color Purple* (Milwaukee Rep), Four-Eyed Moe in *Five Guys Named Moe* (Winter Park Playhouse), Performer in *Don’t Bother Me, I Can’t Cope* (Crossroads Theatre), and Jim in *Big River* (Lyceum Theatre). Hall is Artistic Director/Founder of Stage Aurora Theatrical Company. His most recent TV credit is *Godfather of Harlem*. He sends a big shout out to Mom and Dad and is thankful to God for all Blessings. [darrylreubenhall.biz](http://darrylreubenhall.biz)



**Camryn Hamm** (**The Girl With A Date**) is so excited to be making her ATC debut! She was most recently seen as Beth March in the National Tour of *Little Women*. Other credits include Ella in *Cinderella* (5-Star Theatricals), Johanna in *Sweeney Todd* and Ariel in *The Little Mermaid* (OBCCT), and Minnie Tate in *Jubilee* (Alabama Shakespeare Festival). TV credits include CBS’s *The Young and the Restless* (Shauna Nelson) and ABC’s *Black-ish* (Hilary Montgomery). Hamm holds a B.A. from Cal Poly Pomona, where she

graduated valedictorian. Big thanks to everyone at ATC for the opportunity to be a part of this amazing company, Karim, Erick, Anitra, and the whole Polygon team, and her family and friends for their unwavering support. @camrynhamm | IMDb: Camryn Hamm | [camrynhamm.com](http://camrynhamm.com)



**April Nixon** (**The Woman Of The World**) is returning to Arizona Theatre Company, where she played Jeanette in *Crowns*. Nixon is an Olivier, Elliot Norton, Audelco, and Ovation Award nominee. Broadway and National Tour credits include *Damn Yankees* (opposite Jerry Lewis), *The Dancer’s Life* (opposite Chita Rivera), *Smokey Joe’s Cafe, 9 to 5, FOSSE, The Wiz, Cats, Tommy, Mamma Mia, Sistas, Crowns, Sweet Charity, Caroline or Change, and Dreamgirls*. Television credits include *Law & Order SVU/Criminal Intent, The Dave Chapelle Show, and The Wire*. Film credits include *Malcom X, Man On The Moon, The Perfect Find* (opposite Gabrielle Union-Netflix), and *Two Degrees* (opposite Vanessa E. Williams). Nixon has worked with Anna Deveare Smith, Spike Lee, Regina Taylor, Gwen Verdon, Walter Bobbie, Sheldon Epps, Jack O’ Brien, Jerry Zaks, Des McAnuff, Graciela Daniel, Ann Reinking, George Faison, and Michael Peters. She has sung (opposite Grammy winner Anjelique Kidjo) in *Yemandja*. Stay tuned for Nixon’s new web series “Black-StageStories & FindingMyLola’s” on YouTube. @maggiehunter51 | FB: April L Nixon



**Roz White** (**The Lady From The Road**) is making her debut with Arizona Theatre Company. White is celebrating 40 years as an arts professional and educator, with a BFA in Theatre from Howard University and an M.Ed. in Curriculum from

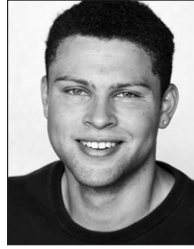
CAST (IN ALPHABETICAL ORDER)

Northcentral University. She recently starred as Billie Holiday in *Lady Day at Emerson's Bar and Grill* at Mosaic Theater Company in Washington, D.C. White is a graduate of Duke Ellington School of the Arts, where she also served for over 10 years as a faculty member. She has performed as a featured vocalist with Yolanda Adams, Gerald Levert, Stevie Wonder, and more. She spent two years on the road as Zelma Bullock in the Broadway tour of *TINA – The Tina Turner Musical*. Other theatre credits include *Dreamgirls*, *Once On This Island*, *Ain't Misbehavin'*, *Seven Guitars*, *Violet*, *Bessie's Blues*, *Anne and Emmett*, *The Amen Corner*, and her self-penned cabaret *Pearl Bailey by Request*. She is currently starring as Sybrina Fulton in the recently released award-winning film *Veils – Requiem for Trayvon*. Love to Anthony, King, Messiah, and MaKari.



**Brooke Leigh Davis (The Woman Of The World, The Lady From The Road Understudy)** is grateful for this opportunity to return to Arizona Theatre Company, where she previously was Vera understudy in *Justice* and was swing understudy for

Sarah, Sephronia, and Sweet Thing in *Nina Simone: Four Women*. Davis is a versatile performer with credits in Opera, Jazz, Blues, R&B, and the Theatre stage. Some of her favorite roles include *Caroline, or Change* (Caroline), *Brooklyn the Musical*, (Paradise), *The Light In The Piazza* (Signora Naccarelli), and *A Raisin In The Sun* (Lena Younger), and she originated the role of Senator Kelsey Tate in George Mabry's chamber opera production of *An Elegant Obsession*. With a secret love for background singing, Davis' all-time favorite role is that of Pit Singer for the musical *The Wiz*. [brookeleighdavis.com](http://brookeleighdavis.com) | IG: @msbrookeleigh



**John Henderson (The Man in The Saloon Understudy)** is making his Arizona Theatre Company debut. He is a current student at the University of Arizona and has appeared in several of their productions. He recently played the role

of Scarecrow/Hunk in Saguaro City Music Theatre's production of *The Wizard of Oz*. Other credits include Billy Cane in *Bright Star*, Judge Turpin in *Sweeney Todd*, and High Priest in *Jesus Christ Superstar* (Arizona Repertory Theatre). He also trained with American Conservatory Theatre's prestigious Summer Training Congress. @Johnhenduu



**Krystal Pope (The Girl With A Date Understudy)** is excited to be in her first Arizona Theatre Company performance! She is an accomplished actress from Arizona who enjoys traveling for work, and she is actively involved in a variety of

entertainment ventures. Recent credits include Hugs/Mrs. Crenshaw in *Hugs & Kisses*, *Showdown At Dry Gulch* with the National Theater For Children, Biondello in *The Taming of the Shrew*, Marley in *Escape to Margaritaville*, and Polly Ann in *The Legend of John Henry*. She is profoundly grateful for her family members who always encourage her to pursue her dreams, even when they take her far from home. She hopes you take away valuable information as you make musical memories with her! Cheers! @kaypeazz

////// THE CREATIVE TEAM //////////////

**Sheldon Epps (Conceived and Originally Directed)** the highly acclaimed musical revue *Blues in the Night*. The Broadway production was nominated for a Tony Award as Best Musical of the Year, and the London production, which he also directed, was nominated for two Laurence Olivier Awards and ran for over a year on the West End before being broadcast in Europe by Thames Television. Epps also conceived and directed the Duke Ellington musical *Play On!*, which received three Tony Award nominations and was produced at Seattle Repertory Theatre and the Goodman Theatre in Chicago, where it received four Jefferson Awards including Best Musical. The Pasadena Playhouse production was taped by PBS for broadcast as part of the Great Performances series. Epps was a co-founder and the associate artistic director of the off-Broadway theater The Production Company. His directorial assignments for that company included *A Midsummer Night's Dream*, *Incandescent Tones*, and *Scenes and Revelations*, which he also directed on Broadway at the Circle In The Square Theatre. Epps has directed plays and musicals for many of the country's major theatres including the Guthrie, the Old Globe Theatre, Manhattan Theatre Club, Seattle Repertory Theatre, Playwrights Horizons, Crossroads Theatre, Cleveland Play House, Arizona Theatre Company, Goodspeed Opera House, Coconut Grove Playhouse, Walnut St. Theatre, George Street Playhouse, and Asolo State Theatre. For television, he has directed episodes of *Frasier*, *Friends*, *Girlfriends*, *My Wife and Kids*, *Veronica's Closet*, *Evening Shade*, and *Sister, Sister*. He is currently a member of the executive board of the Society of Stage Directors and Choreographers. Epps is a two-time recipient of the Theatre Communications Group/Pew Charitable Trust National Theatre Artists Residency Grant, which supported his four-year tenure at the Old Globe Theatre as associate artistic director. Epps was pleased to join the Pasadena Playhouse as artistic director in 1997. His directing credits at this theater include *Blue*, *Play On!*, *Les Liaisons Dangereuses*, *The Importance of Being Earnest*, *The Old Settler*, *The Real Thing*, *On Borrowed Time*, *Mr. Rickey Calls a Meeting*, and *Blues in the Night*, and he was production consultant for the musical

*Sisterella*. He directed the world premiere of *Blue* at Arena Stage Theatre, which was also produced off-Broadway at the Roundabout Theatre. Following its record-breaking engagement in Pasadena, *Blue* began a national tour co-produced by the Pasadena Playhouse.

**Ricardo Khan (Director)** is a director, writer, educator, and Tony Award-winning Artistic Director. He cofounded the Crossroads Theatre Company, one of history's few African American theatres to ever rise to both national and international prominence as a major professional arts institution. He was also Associate Producer for a number of Crossroads productions at the New York Public Theatre for the late Joseph Papp. In 2005, with co-producer Woodie King Jr., he presented the Broadway tribute to August Wilson in the New York theatre that now bears Mr. Wilson's name. Khan's major directing credits include Crossroads, the Oregon Shakespeare Festival, Hartford Stage, the Market Theatre in South Africa, Ford's Theatre, the Negro Ensemble Company, Manhattan Theatre Club, Lincoln Center, the Kennedy Center, Repertory Theatre of St. Louis, Cincinnati Playhouse, Florida Studio Theatre, Alabama Shakespeare Festival, and the world famous Apollo Theatre in Harlem. As a writer, he co-wrote the NAACP award-winning *FLY* with Trey Ellis about the esteemed Tuskegee Airmen of World War II, *Satchel Paige and the Kansas City Swing*, also with Ellis, *Freedom Rider*, and *When Day Comes*, starring the internationally acclaimed singing group Sweet Honey in the Rock. Most recently, at the request of international film and theatre icon Sir John Kani, he travelled to Johannesburg to serve as director of South Africa's first ever production of August Wilson's *Fences* at the Joburg Theatre. He was also the producer of the 2016 opening night gala ceremonies for the Smithsonian's new National Museum of African American History and Culture in Washington, D.C., and he currently serves as the show director for Sweet Honey in the Rock's 50th anniversary tour.

**Hope Clarke (Choreographer)** is an actress, dancer, vocalist, choreographer, and director. Broadway: *Jelly's Last Jam* (Tony nomination best

////// **THE CREATIVE TEAM** ////

choreography), *The Tempest*, *Caroline or Change*, and *A Free Man of Color*. Regional: *A Christmas Carol* (Hartford Stage, Ailey Theatre), *Fly* (Alabama Shakespeare Festival, Pasadena Playhouse, Florida Studio Theatre, St. Louis Rep, Cincinnati Playhouse, Ford's Theatre, Vineyard Playhouse, Crossroads Theatre), *The Roads to Home* (Primary Stages), *Grey Gardens* (Center Theatre Group, Bay Street Theatre), *Resurrection* (Philadelphia Theatre, Hartford Stage), *The Dreams of Sarah Breedlove* (Goodman Theatre), *South Pacific* (Pioneer Theatre), and *The Learned Ladies of Park Avenue* (Hartford Stage). Clarke began her career as a dancer and performed on Broadway in *West Side Story*, *Don't Bother Me*, *I Can't Cope*, and *Grind*, among others. She was the first African American and first African American woman to direct and choreograph a major staging of *Porgy and Bess* (for the Houston Grand Opera).

**William Foster McDaniel (Music Director, Conductor-Pianist)** began his career in musical theatre as pianist-conductor of off-Broadway's long-running *The Fantasticks*. He has since served as conductor for Broadway and National Touring companies of *Timbuktu!*, *Bubbling Brown Sugar*, and *Ain't Misbehavin'*. He has conducted several European productions of Duke Ellington's *Sophisticated Ladies*. In addition to conducting and arranging for many popular performers and theatrical productions, McDaniel's own compositions have received performances by the Yonkers Civic Philharmonic Orchestra, the New Symphony of New York, the Mozart Society Orchestra at Harvard, the Brooklyn Philharmonic, the Topanga Symphony, and the BBC Concert Orchestra in London. McDaniel is a graduate of Capital University and Boston University, and has studied as a Fulbright Scholar in Paris, France.

**Edward E. Haynes Jr. (Scenic Designer)** is happy to be returning to Arizona Theatre Company, where he last designed *Master Class*. Regional credits include projects at The Pasadena Playhouse, Laguna Playhouse, La Jolla Playhouse, Geffen Playhouse, Muny Opera, Kansas City Rep, Oregon Shakespeare Festival, Mark Taper Forum, Ebony Repertory Theatre Co., South Coast Rep, Kirk

Douglas Theatre, Berkeley Rep, East West Players, Hollywood Bowl, Marin Theatre Co., TheatreWorks, Intiman Theatre, Trinity Rep, Pittsburg City Theater, Alley Theatre, Alliance Theatre, and many he can no longer remember. Television credits include MTV's *Spring Break 2012 and 2011*, *Hip Hop Harry*, *The Tony Rock Project*, and *Culture Clash*. edhaynes.carbonmade.com

**Myrna Colley-Lee (Costume Designer)** is returning to Arizona Theatre Company, where she designed *Seven Guitars* in the 1996/1997 Season. This is her third collaboration with Director Ricardo Khan, Colley-Lee designed August Wilson's *Fences* (her fourth career production of the show) with him at Crossroads earlier this year, as well as *Freedom Riders* (Ricardo Khan, et al) at Crossroads and Alabama Shakespeare Festival. Actively designing for decades, she developed her career during the resurgence of Black Theatre in the late '60s, '70s, and '80s. Her more recent works are *Trouble in Mind* (Alice Childress) at Utah Shakespeare Festival and *Ma Rainey's Black Bottom* (August Wilson) at Writer's Theatre in Illinois. Colley-Lee has designed costumes for more than 70 productions and two films at 50 different theatres and venues. In 2022, Colley-Lee was awarded the Mississippi Governor's Award for Excellence in Costume Design. She has received numerous awards over the years including Outstanding Costume Design from the National Black Theatre Festival.

**Craig Stelzenmuller (Lighting Designer)** is a New York-based Lighting Designer. Broadway Associate credits include *Hell's Kitchen*, *Sweeney Todd*, *Grey House*, *Almost Famous*, *MJ: The Musical*, *A Christmas Carol*, *Springsteen*, *The Minutes*, *Hillary & Clinton*, *Boys in the Band*, *Pretty Woman*, *Charlie and the Chocolate Factory*, *Cats*, *School of Rock*, *An Act of God*, *Gigi*, *A Gentleman's Guide to Love and Murder*, *I'll Eat You Last...*, and *Wonderland*. Recent projects include *The Queen of Versailles*, *How the Grinch Stole Christmas* (U.S. Tours), *Real Women Have Curves* (ART), *Here We Are* (The Shed), and *Beauty and the Beast* (International Tour). Stelzenmuller is faculty at The Studio School of Design and a graduate of the University of North Carolina School of the Arts.

////// **THE CREATIVE TEAM** \\\

**Paul Miller (Lighting Designer)** returns to ATC, where he designed the lighting for *Scrooge!* and *King Charles III*. Miller's Broadway credits include five shows as Lighting Designer and 22 shows as Associate/Assistant. He has designed over 20 Off-Broadway shows including favorites *Desperate Measures*, *Clinton!*, *Pageant*, *Vanities – the Musical*, *Waiting for Godot*, *Nunsense*, and *Encores!* National Tours include *Hairspray*, *Elf*, *Wizard of Oz*, *Sweeney Todd*, *The Producers*, and *Rent*. He has worked with Regional Theatres including The Old Globe, Dallas Theatre Center, Chicago Shakespeare, Idaho Shakespeare, Asolo Rep, ACT, Cleveland Playhouse, Pasadena Playhouse, Goodspeed, Cape Playhouse and others. Television credits include *Evil* (CBS & Paramount+), *Live from Lincoln Center*, 23 Netflix specials, and New Year's Eve/Times Square (25 years and 100+ performances). He has worked internationally in Stratford, West End, Vienna, Milan (Teatro alla Scala), Brazil, The Philippines, South Africa, Iceland, and China.

**Daniel Perelstein Jaquette (Sound Designer)** is a freelance sound designer, composer, and musical director. Jaquette has been the professor of sound design for theatre at Arizona State University since 2019. ATC projects include *Dial M for Murder*, *Intimate Apparel*, *Private Lives*, and *Nina Simone: Four Women*. Other recent designs and original music projects include at Opera Philadelphia, Cincinnati Playhouse, Cleveland Playhouse, McCarter Theatre, Actors Theatre of Louisville, Geva Theatre, Phoenix Theatre, Wilma Theater, Arden Theatre, Roundabout Theatre, People's Light, and others. Jaquette has received two Barrymore Awards and 16 Barrymore Award nominations in three categories, including recognition as a finalist for the F. Otto Haas award. He received an Independence Foundation Fellowship in the Arts in 2013 to explore the relationship between sound design and the visual arts. He is a proud member of the Theatrical Sound Designers and Composers Association, and United Scenic Artists local 829.

**Timothy Toothman (Stage Manager)** is thrilled to return to Arizona Theatre Company, where he spent 15 seasons as the Artistic Associate to Artistic Director David Ira Goldstein. He was also a

member of the Stage Management staff and stage managed more than 20 ATC productions (including Artistic Director Matt August's *King Charles III*). His other regional theatre credits include San Jose Repertory Theatre, Kansas City Repertory Theatre, Geva Theatre Center, and Cleveland Play House as well as Park Square Theatre and Penumbra Theatre in St. Paul, Minnesota. He has spent the past 20 summers as Production Stage Manager of the Martha's Vineyard Playhouse. In addition to his stage management work, he also spent 10 years as an Arts Grants Program Director for the State Arts Agencies of Maryland and Connecticut. Timothy has been a member of Actors' Equity since 1974.

**MyKel Marie Hall (Assistant Stage Manager)** is thrilled to be back for her fourth season at Arizona Theatre Company. Her favorite past credits at ATC include *The Glass Menagerie*, *True West*, and *The Legend of Georgia McBride*. Hall received her BS in Theatre Arts and Psychology from Southern Utah University. All the love and gratitude to her friends and family for their endless support and encouragement.

**Michael Donovan Casting (Casting Director)** principal Michael Donovan is the recipient of nine Artios awards, presented by the Casting Society of America for Outstanding Achievement in casting; his colleague Richie Ferris has three Artios awards. They have cast more than 1,000 shows produced at such venues as the Hollywood Bowl, the Ahmanson Theatre, the Mark Taper Forum, Pasadena Playhouse, the Kirk Douglas Theatre, Walt Disney Concert Hall, Laguna Playhouse, International City Theatre, Ebony Repertory Theatre, the El Portal Theatre, La Jolla Playhouse, the Getty Villa, the Garry Marshall Theatre, the Theatre @ Boston Court, the Soraya Performing Arts Center, the 24<sup>th</sup> St. Theatre, San Francisco Symphony, the Palazzo and Paris in Las Vegas, Arkansas Rep, Kentucky Shakespeare Festival, Indiana Rep, and the Troubadour Wembley Park in London – as well as several national tours, numerous films, TV series, and commercials. Donovan is also the President of the Board for the Foundation for New American Musicals.



**THE MUSICIANS**



**William Foster McDaniel (Music Director, Conductor-Pianist)** see page 13 for McDaniel's bio.



**Dylan DeRobertis (Bass)** is a native of Oregon who has lived in Tucson for the last 15 years. Since living in Arizona, he has performed with a wide variety of local musicians and organizations. Some of these include the Tucson Symphony Orchestra,

Lonely Street Productions, Khris Dodge Entertainment, Alex Mack Music, Tucson Jazz Collective, Tucson Pops Orchestra, Arizona Onstage Productions, Tucson Latin Jazz Nonet, Broadway in Tucson (National Touring Broadway shows), Southern Arizona Performing Arts Company, and various small groups in the genres of Chamber Music, Jazz, Latin, Soul, and Rock. He holds a master's degree in double bass performance from Indiana University.



**Land Richards (Percussion/Drums)** is an independent artist who plays a wide variety of music in various performance, recording, and live settings including with Gladys Knight and the Pips, Stevie Nicks, Peabo Bryson, George Benson,

Patti Austin, Bobby Caldwell, Cab Calloway, James Darren, Ben Vereen, Jose Carreras, Plácido Domingo, Hubert Laws, Al Jarreau, Diana Ross, Michael Bolton, Lee Ritenour, Larry Carlton, Bruce

Hornsby, Melissa Manchester, Joe Sample, and Exile of Japan. He is a current member of the group Hiroshima. Stage Musicals include *Swan*, *Five Guys Named Moe*, *Recorded in Hollywood the John Dolphin Story*, and *Ain't Misbehavin'*. TV shows include *The Tonight Show*, *Rick Dees Into The Night*, *The Paul Rodriguez show*, the *Byron Allen Show*, *The Arsenio Hall Show*, *Good Morning America*, *Soul Train*, *Dick Clark's Rocking New Year's Eve*, *Sesame Street*, *VH1*, *UNCF*, *ALMA*, *NAACP*, *Motown Live*, and *TV Land Awards*. Also, appearing at a club near you!



**Ross Daniels (Trumpet)** has been playing trumpet professionally since the mid-1980s. After college, he traveled the world working in show bands aboard 18 different cruise ships, working for most major cruise lines. He is grateful that he was able

to visit 52 countries on six continents during that time. After that he settled in Seattle and worked extensively in various pit orchestras, playing 21 shows in his 10 years living there. Ross returned to Tucson in the early 2000s and has continued to work in various big band and pit orchestra settings. Some of his favorite shows to play are *Damn Yankees*, *Sweet Charity*, *42nd St.*, *Beautiful, Hair*, *The Addams Family*, *In The Heights*, and *A Funny Thing Happened On The Way To The Forum*. He last performed at ATC in *Fiddler On The Roof*, another favorite.



**Michael Weiss (Reeds/Woodwinds)** is a woodwind specialist working in Tucson. He has been playing saxophone since 1999 and has experience performing in jazz, classical, salsa, and rock styles. At university, Weiss performed with jazz greats

**THE MUSICIANS**

such as Michael Davis, Rufus Reid, and Bobby Shew. He also performed with the Tucson Symphony Orchestra in their *Live and Let Die* and *Pixar in Concert* productions. He has performed in 24 productions with 10 theater companies. In 2017, he shared the stage with Bernadette Peters as part of her *Not A Day Goes By* tour. His collaboration with percussionist Elizabeth Soflin in

the Weiss/Soflin Duo was a celebration of new, experimental music. From 2013 to 2020, the Duo commissioned new compositions and arrangements while performing in opera houses, art exhibitions, and universities. Weiss earned his saxophone performance degree at the University of Arizona under the instruction of Dr. Kelland Thomas.



**Check Out ATC's Social Pages and Connect With Other Theatre Fans!**

					
<p><a href="https://www.facebook.com/arizonatheatrecompany">Facebook.com/arizonatheatrecompany</a></p>		<p><a href="https://www.instagram.com/arizonatheatre">instagram.com/arizonatheatre</a></p>		<p><a href="https://www.tiktok.com/@arizonatheatre">tiktok.com/@arizonatheatre</a></p>	
					
<p><a href="https://www.linkedin.com/company/arizonatheatrecompany">linkedin.com/company/arizonatheatrecompany</a></p>		<p><a href="https://www.threads.net/@arizonatheatre">threads.net/@arizonatheatre</a></p>		<p><a href="https://x.com/arizonatheatre">x/arizonatheatre</a></p>	

**ATC.ORG / 833-ATC-SEAT**

**EXECUTIVE LEADERSHIP**

**Matt August** is the Kasser Family Artistic Director. He is a theatre, opera, and film director and educator whose productions have broken box-office records on Broadway (*Grinch*) and played in London, across the UK, Off-Broadway, in major Regional theatres, at festivals, on national tours, at the Grand Ole Opry, and for three holiday seasons at Madison Square Garden. His work has been featured on television talk shows and NPR and performed at the White House for President Bush, Cabinet Members, and military children.

He was the Associate Director to multi-Tony-winning director Jack O'Brien on the Broadway productions of *Henry IV*, *The Full Monty*, *The Invention of Love*, and *Imaginary Friends*. He was promoted to Resident Director on Tom Stoppard's *The Invention of Love*, for which both lead actors received Tony Awards, and on the Tony-winning *Henry IV* (Best Director and Best Revival), starring Kevin Kline and Ethan Hawke. He also directed the Australia production of *The Full Monty*, earning a Helpmann Award co-nomination for Best Direction. He has directed World, American, and Regional Premieres including the record-breaking productions of *Sixteen Wounded* at the Cherry Lane and Long Wharf Theatres (starring Martin Landau), *In the Heights* (starring Anthony Ramos in his AEA debut), and *King Charles III* and *The Gospel According to Thomas Jefferson*, *Charles Dickens*, and *Count Leo Tolstoy: Discord* for Arizona Theatre Company.

His productions have been recognized with nominations and awards from LA's *Ovation*, Washington, D.C.'s *Helen Hayes*, Arizona's *Mac*, San Francisco's *Bay Area Critics*, *Broadway World*, Utah's *Audience Choice*, and Australia's Helpmann Awards. His work has appeared on Year End Top Ten lists for the *LA Times*, *San Francisco Chronicle*, *Huffington Post*, *Arizona Republic*, *Oakland Tribune*, *Arizona Daily Star*, *San Jose Mercury News*, and *NPR/KQED*. He has been awarded internships, fellowships, and residencies from the Old Globe Theatre, Drama League, Oregon Shakespeare Festival, The Acting

Company, Robert Wilson's Watermill Center, the Juilliard School, The Wrestling School, and San Francisco's Zen Center. In addition to theatre, he was awarded the Panavision New Filmmakers Grant and directed the award-winning short family film *How to Get to Candybar*.

In 2006 and 2007, August directed the Broadway productions of *Dr. Seuss' How the Grinch Stole Christmas – The Musical*, which broke box office records and has been touring every year since 2008, including a UK production in 2019. His production of *A Christmas Carol* ran for five years at Ford's Theatre, and his Shakespeare productions include *Much Ado About Nothing* (Pioneer), *Two Gentlemen of Verona* (Old Globe and Acting Company), *Tempest* (Hanger), *Romeo and Juliet* (National Shakespeare Company), and *Merry Wives of Windsor* (Acting Company). He recently directed the opera *La Boheme* (starring Marina Costa Jackson) and *Pirates of Penzance* at Noorda Center.

He served on panels and committees for the Society of Directors and Choreographers, and has mentored emerging directors through both the SDCF and Drama League as well have having taught directing as an Assistant Professor at the largest university in Utah. [MattAugust.com](http://MattAugust.com)

**Geri Wright**, Executive Director, joined ATC in January 2020 and was Managing Director of the company through its most challenging time ever. While the COVID shutdown posed many challenges, it afforded the opportunity to reimagine the 55-year-old organization's structure from top to bottom to ensure sustainability into the future.

Geri brings more than 25 years of nonprofit leadership, management, and fundraising experience to ATC, including as CEO at Act One, where she more than doubled the organization's impact. She also served as Chief Development Officer at the American Red Cross for four years and Director of Development at the Heard Museum for more than 11 years.

EXECUTIVE LEADERSHIP

Her love of theatre started at Radio City Music Hall in New York City on a school field trip and has grown into a passion for the arts today. Throughout her career, she has been a passionate advocate for the importance that the arts play in creating healthy and prosperous communities. She was recently recognized as a Titan 100 Phoenix CEO and was named one of the

*Phoenix Business Journal's* 2019 Outstanding Women in Business. She also has been honored with an assortment of acknowledgments for her work in the charitable community. Wright, her husband, two horses, an Australian Cattle Dog, and a Great Pyrenees puppy reside at the base of the McDowell Mountains in North Scottsdale.

Host Your Next Event in Tucson's Most Iconic Venue:  
The Temple of Music and Art



Built in 1927, the Temple of Music and Art is an historical cultural arts venue. Constructed in a Southwestern style, the Temple breathes grace and class with its beautiful surroundings of cobbled stone and quiet tree-lined street. Now the home of Arizona Theatre Company, the Temple has been called "one of this city's most elegant buildings" by the *Tucson Weekly*.

The Temple is perfect for arts performances & rehearsals, weddings & receptions, corporate functions, art installations, private parties, classes, and more!

For more information, please visit **[atc.org/rentals](http://atc.org/rentals)**

# BOB & JEAN: A LOVE STORY

Arizona Theatre Company Presents  
**The World Premiere of**  
**Robert Schenkkan's**  
*Bob & Jean: A Love Story*

**An Intimate and Poignant Exploration  
of Wartime Romance**



**Arizona Theatre Company** is set to unveil a powerful new play this spring – *Bob & Jean: A Love Story*, written by Pulitzer Prize and Tony Award-winning playwright Robert Schenkkan. This deeply personal work offers a rare glimpse into the real-life courtship of Schenkkan’s parents, Bob and Jean, whose romance flourishes amidst the turbulence of World War II.

*Bob & Jean: A Love Story* marks a bold continuation of ATC’s commitment to developing new works that explore engaging and compelling stories. Schenkkan, whose illustrious career spans across theater, television, and film, brings a raw and intimate perspective to this world-premiere production.

## **A Play of the Heart: Schenkkan’s Most Personal Story**

Best known for his sweeping historical dramas such as *The Kentucky Cycle* – which earned him the Pulitzer Prize for Drama – Schenkkan’s work often delves into the intersection of history, politics, and personal resilience. His critically acclaimed play *All the Way*, which chronicles Lyndon B. Johnson’s fight for civil rights, won the Tony Award for Best Play and was later adapted into an HBO film starring Bryan Cranston.

Schenkkan’s screenwriting achievements are equally notable, with credits such as the Academy Award-nominated *Hacksaw Ridge* and the hauntingly beautiful *The Quiet American*. With *Bob & Jean: A Love Story*, however, Schenkkan steps into new emotional territory, drawing inspiration

# BOB & JEAN: A LOVE STORY

from the lives of his own parents. In this poignant drama, he explores the enduring power of love and duty against the backdrop of wartime sacrifice.

## The Love Story Behind the Play

Set in 1941, *Bob & Jean: A Love Story* follows the whirlwind romance between Bob, a Bomb Disposal Officer in the Pacific, and Jean, a talented USO actress touring the nation to boost troop morale. The play opens with the couple's electric first meeting in New York City, where their budding friendship blossoms into something more. Yet, the deep connection they share is soon tested as the war separates them across thousands of miles.

Despite the distance, their correspondence becomes a lifeline, connecting them emotionally through letters, poems, and dreams of reunion. Through their passionate and sometimes desperate letters, Schenkkan weaves a love story that triumphs over time and distance, navigating the horrors of war and the complexities of the human heart.

## A Love Transcending a Lifetime

Kasser Family Artistic Director Matt August describes the play as a testament to enduring love: “This play is a demonstration of love transcending a lifetime. It is poetic, it is nostalgic, and it is Schenkkan’s most personal story – that of his parents’ courtship.”

*Bob & Jean: A Love Story* represents not only the enduring power of love and the human spirit but the undying artistry of theatre. Arizona Theatre Company is proud to continue that vital energy with *Bob & Jean: A Love Story*. This world-premiere production promises to be an unforgettable theatrical event. Whether you're a longtime fan of Schenkkan's work or discovering his storytelling genius for the first time, this play is sure to captivate, inspire, and leave a lasting impression.

A close-up, black and white photograph of a fountain pen nib, showing the intricate details of the writing tip and the surrounding metal housing.

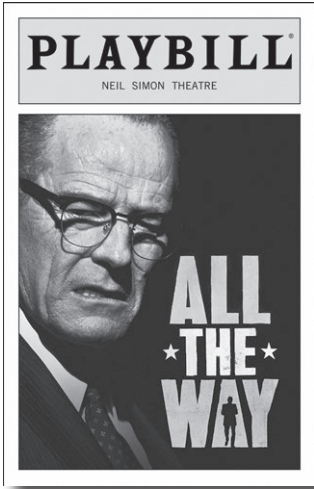
*Don't miss this remarkable new play –  
a love story for the ages.*

## Performance Details and Tickets

*Bob & Jean: A Love Story* will have its world premiere at Arizona Theatre Company in 2025. Performances run from March 23 to April 12, 2025, at the Temple of Music and Art in Tucson, followed by a run from April 19 to May 4, 2025, at Tempe Center for the Arts in Greater Phoenix.

**Tickets are on sale now, with prices starting at \$33. To purchase tickets and learn more about the production, visit [atc.org](http://atc.org) or call 1-833-ATC-SEAT.**

# BOB & JEAN: A LOVE STORY



## 10 fun facts about Robert Schenkkan:

**Pulitzer History-Maker:** Schenkkan's *The Kentucky Cycle* was the first play to win the Pulitzer Prize for Drama without having a Broadway production at the time.

**Broadway Triumph:** His Tony-winning play *All the Way* set a Broadway box office record when it opened in 2014.

**Actor-Turned-Playwright:** Before becoming a playwright, Schenkkan was a professional actor, appearing in TV shows like *Star Trek: The Next Generation* and *The Twilight Zone*.

**Family Legacy:** He comes from a family steeped in the arts – his brother, Steven Schenkkan, is a well-known TV producer.

**Hollywood Success:** He co-wrote the screenplay for *Hacksaw Ridge*, which received six Oscar nominations, including Best Picture.

**Shakespeare Buff:** Schenkkan has often cited Shakespeare's epic storytelling as a major influence on his writing style.

**Historical Inspiration:** He's drawn to stories based on American history and politics, believing in the power of theater to engage civic conversations.

**Record-Breaker:** When *The Kentucky Cycle* premiered in Seattle, it ran over six hours, spanning two parts performed across multiple days.

**Teacher and Mentor:** He's been a visiting professor and mentor at several universities, nurturing the next generation of playwrights and screenwriters.

**Award Magnet:** In addition to the Pulitzer and Tony, Schenkkan has won the Writers Guild Award and been nominated for an Emmy, cementing his legacy in both theater and film.



# CORPORATE, FOUNDATION, AND GOVERNMENT PARTNERS

**Our work is made possible due to the generosity of many corporations, foundations, and government supporters. Through these partnerships, we can maintain a standard of artistic excellence while providing greater access to all.**

List reflects donations made July 1, 2023 to December 3, 2024

2024/2025 SEASON SPONSOR:

**I. MICHAEL AND BETH KASSER**

2024/2025 CORPORATE SEASON SPONSOR:

**LAVIDGE**

### Artistic Angels

**\$100,000+**

Flinn Foundation  
LAVIDGE  
The Kemper and Ethel  
Marley Foundation  
Virginia G. Piper  
Charitable Fund

### Ovation Circle

**\$50,000 - \$99,999**

The Shubert Foundation  
SRP

### Spotlight Circle

**\$25,000 - \$49,999**

Arizona Commission on the Arts  
HS Lopez Family Foundation  
Margaret E Mooney Foundation  
at Tucson Foundations  
Richard P. Stahl  
Charitable Fund

### Artistic Director's Circle

**\$10,000 - \$24,999**

APS  
Arts Foundation for Tucson  
and Southern Arizona  
The Connie Hillman  
Family Foundation  
National Endowment  
for the Arts  
The Stocker Foundation  
RBC Wealth Management  
Tucson Desert Song Festival

### Producer's Circle

**\$6,000 - \$9,999**

James and Grace Cain  
Family Foundation  
City of Tempe Arts and Culture  
The DesertLeaf  
The Robert Wood  
Johnson Foundation  
Margaret T. Morris Foundation  
The John and Helen  
Murphey Foundation  
UnitedHealthcare

### Director's Circle

**\$4,000 - \$5,999**

Blue Cross Blue Shield  
of Arizona  
PICOR Charitable Foundation  
Scottsdale Fashion Square  
Spencer Fane LLP  
Tempe Diablos Charities

### Designer's Circle

**\$2,000 - \$3,999**

Applied Materials Foundation  
Cantor Forensic  
Accounting, PLLC  
Cox Charities  
Phoenix Pride  
Kellenberger + Tollefson Center  
Long Realty Cares Foundation  
Withthoff Apprill Family  
Foundation

### Insider

**\$1,000 - \$1,999**

The Gadsden Company  
Sand Reckoner  
Ben Walls Films

### Patron

**\$500 - \$999**

Anonymous  
Actor's Equity Foundation  
Credit Union West  
The Haddock Stanton  
Foundation  
Kiwanis Club of  
Friendship Village  
The Learning Curve  
Margaret Mellon  
Hitchcock Foundation  
The Benevity Community  
Impact Fund  
PayPal Giving Fund



HS Lopez Family  
Foundation

The Kemper and Ethel  
Marley Foundation



Richard P. Stahl  
Charitable Fund





# DONOR ADVISED FUNDS

List reflects donations made July 1, 2023 to December 3, 2024

## Anonymous

The Ken and Kelley Abrahams Charitable Fund at The American Gift Fund

The Larry R. and Florence A. Adamson Fund at the Community Foundation for Southern Arizona

The Ms. Jada Crellin Ahern Donor Advised Fund at National Philanthropic Trust

The Mary and Cameron Artigue Charitable Fund at Schwab Charitable

The Daniel Asia Donor Advised Fund at Renaissance Charitable

The Daniel Asia Fund at Schwab Charitable

The ASU and ASUF at Valley of the Sun United Way

The BD2 Donor Advised Fund at the Community Foundation for Southern Arizona

The Berg Charitable Gift at Fidelity Charitable

The Jeffrey Berg and Debra Paget Fund at Cornell University Foundation

The Bolduc Family Charitable Fund at Schwab Charitable

The Frances Chapin Foundation Philanthropic Fund at United Way of Tucson and Southern Arizona

The Charitable Contributions for Improving Quality of Live Donor Advised Fund at Fidelity Charitable

The Amy Charles and Steve McMillan Donor Advised Fund at the Jewish Community Foundation of Southern Arizona

The Bill/Donna Dehn Charitable Fund of the Ayco Charitable Foundation

The Samuel Denmark Family Fund at Fidelity Charitable

The Laura and Michael DiChristofano Fund at Morgan Stanley GIFT

The Norman and Tricia Don Charitable Fund at American Endowment Foundation

The Adrienne Drell and Frank Nitzkman Fund at National Philanthropic Trust

The Pamela and Richard Duchaine Charitable Giving Fund at Vanguard Charitable

The Gerald and Barbara Ehrlich Donor Advised Fund at Bank of America Charitable Gift Fund

The Flatt Family Foundation at the Arizona Community Foundation

The Jane Gellman Donor Advised Fund of the Jewish Community Foundation of Milwaukee Jewish Federation, Inc.

The Robert and Laurie Kaye Glaser Donor Advised Fund at The Jewish Community Foundation of

Southern Arizona

The Thomas Godfrey Charitable Fund at Fidelity Charitable

The Gerry Goldsholle and Myra Levenson Donor Advised Fund at Schwab Charitable

The Ellen and David Goldstein Donor Advised Fund at the Jewish Community Foundation of

Southern Arizona

The Debbie Goodman and Patrick Butler Donor Advised Fund at Schwab Charitable

The Gordon Family Fund at Fidelity Charitable

The Greenleaf/Molberg Family Fund at Schwab Charitable

The Guilfof Family Charitable Fund at Schwab Charitable

The Hazan Family Donor Advised Fund at the Jewish Community Foundation of Southern Arizona

The Mack Jones Donor Advised Fund at Schwab Charitable

The Michael and Robin Kaiserman Philanthropic Fund of the Jewish Community Foundation of

Southern Arizona

The Karcis and Seward Giving Fund at Fidelity Charitable

The Lowell and B Keppel Charitable Fund at Vanguard Charitable

The Carol and Foster Kivel Family Fund at the Community Foundation for Southern Arizona

The Gary and Tandy Kippur Family Donor Advised Fund at the Jewish Community Foundation of Southern Arizona

The Norm and Teri Klein Donor Advised Fund at Schwab Charitable

Phillip and Gina Koo Family Charitable fund at Fidelity Charitable

The Kwoh Family Charitable Fund at Vanguard Charitable

The Sally Lanyon Donor Advised Fund at The Jewish Community Foundation of Southern Arizona

The Robert B. Leff and Janice M. Leff Fund at the Arizona Community Foundation

The Bertie and Jack Levkowitz Donor Advised Fund at the Jewish Community Foundation of

Southern Arizona

The Betsy and Lew Lurie Family Charitable Fund at Fidelity Charitable

The Charles Lynn and Janet Lynn Donor Advised Fund at Schwab Charitable

The Meyer Family Foundation

The George and Eleanor Mink Family Fund at Schwab Charitable

The Barbara D. Molotsky Fund at Fidelity Charitable

The Patrick J. O'Leary Foundation at Fidelity Charitable

The Pozarsky/Riley Charitable Fund at Fidelity Charitable

The Rein Family Fund at Schwab Charitable

The George and Wendy Reiter Donor Advised Fund at the Ayco Charitable Foundation

The Reynolds Giving Fund for Charitable Fund at Fidelity Charitable

The Valerie and Herschel Richter Donor Advised Fund at the Jewish Community Foundation of Greater Phoenix

The Riegger Charitable Fund at National Philanthropic Trust

The Roehrick Family Fund at Fidelity Charitable

The Dr. Herschel and Jill Rosenzweig Donor Advised Fund at Jewish Community Foundation of Southern Arizona

The Tom and Eileen Rotkis Donor Advised Fund at Schwab Charitable

The RWJM Charitable Trust at Fidelity Charitable

The Deborah and Marc Sandroff Donor Advised Fund at Morgan Stanley

The Arlene and Morton Scult Arts Foundation at Arizona Community Foundation

The Lex and Carol Sears Philanthropic Fund at United Way of Tucson and Southern Arizona

The Shirley Family Charitable Fund at Fidelity Charitable

The Daniel J. and Evelyn G. Simon Donor Advised Fund of the Jewish Community Foundation of Greater Phoenix, Inc.

The Smallsreed Family Fund at Fidelity Charitable

The Richard P. Stahl Charitable Fund at American Endowment Foundation

The Stonewall Foundation Fund held at the Community Foundation for Southern Arizona

The John and Carolyn Stuart Charitable Gift Fund at Bank of America Charitable Gift Fund

The Tavel Family Fund at Fidelity Charitable

The Tyler and Marcia Tingley Donor Advised Fund at Fidelity Charitable

The Gerald Weiner Designated Fund of the Jewish Community Foundation of Greater Phoenix, Inc.

The Ronald & Diane Weintraub Donor Advised Fund at The Jewish Community Foundation of Southern Arizona

The Elliott and Wendy Weiss Charitable Gift Fund at Schwab Charitable

The James D. Wezelman Donor Advised Fund at the Jewish Community Foundation of Southern Arizona

The Zimmermann Family Fund at Fidelity Charitable

**Our work is made possible due to the generosity of many individual supporters.  
With the gifts from the following donors, we can maintain a standard  
of excellence while providing access to all.**

July 1, 2023 – December 3, 2024

## Artistic Angels

**\$100,000+**

Alice and Paul Baker  
I. Michael and Beth Kasser  
Mary Beth and Jerry Radke  
Susan and Jeffrey Rein  
Nancy and Peter Salter

## Ovation Circle

**\$50,000 - \$99,999**

Shirley Estes  
Rob and Laurie Glaser  
The Estate of Philip C. Keller  
Kay and Walter Oliver  
Enid and Michael Seiden  
Jean and Fred Shaulis

## Spotlight Circle

**\$25,000 - \$49,999**

Anonymous  
Char and Alan Augenstein  
Patricia Engels and Dick Medland  
Mary and Matthew Palenica

## Artistic Director's Circle

**\$10,000 - \$24,999**

Anonymous  
Mary Jan and Paul Bancroft  
Denice Blake and John Blackwell  
Susan and Brian Boylan  
Deanna Evenchik-Brav  
and Garry Brav  
Gloria and Phil Cowen  
Estate of Frank K. Davis  
Laura and Michael DiChristofano  
Bruce L. and Lynne  
Wood Dusenberry  
Barb and Ted Frohling  
Jay Glaser and Joan Reichard  
Jeff Guldner and Sydney Reed  
Hugh Hallman  
Suzanne and Lester Hayt  
Rebecca and Albert Johnson  
Julie T. Kasper

Teri and Norman Klein  
Debra and James Larson  
Bill Lewis and Rick Underwood  
Marcia and Andrew Meyer  
Jack and Becky Moseley  
The Estate of Melvin E. Mounts Jr.  
Mallory and Donald Riegger  
Herschel Rosenzweig  
Cathleen and Bill Small  
Susan J Thompson  
Emily and Bob Vincent  
Andy Watson  
Linda Wurzelbacher

## Producer's Circle

**\$6,000 - \$9,999**

Kelley and Ken Abrahams  
Jacklyn Conroy and  
William Maguire  
Diane and Frank Fiduccia  
Vicki Fuller and Michael Momon  
Wendy and Richard Gilman  
Davie Glaser in memory  
of David Glaser  
Eilyn and Jeff Gold  
Nora Hannah and  
David Dunteman  
Amanda and Stephen Heitz  
Marta and Steven Ketchel  
Joan and Robbie Sherwood  
Carolyn and John Stuart  
Taryn and Mark Westergaard  
James Wezelman and  
Denise Grusin  
Michael Willoughby

## Director's Circle

**\$4,000 - \$5,999**

Anonymous  
Beverly Arrington  
Mary and Cameron Artigue  
Mara and Keith Aspinall  
Frederick Banfield and  
Eileen M. Fitzmaurice  
Connie and Rodney Boorse  
Michael Bradford and  
Maikel Lahera Montero

Vicki and Jim Click  
Judy and Dave Crone  
Leslie Dashew and Jack Salisbury  
Bill and Donna Dehn  
Thomas and Veronica Delgado  
Drs. Thomas Elliott and  
Cindy Rankin  
Joan Epstein  
Joanie Flatt  
Dr. Mary Jo Ghory  
Ellen and David Goldstein  
Peggy Goulding  
Cristine and Ed Hansen  
Lee and Arthur Herbst  
Sandy and Ed Holland  
Bob and JoAnne Hungate  
Brian Jorgensen and Mark Latka  
Mary and Paul Koss  
Sally and Richard Lehmann  
Dr. Lorraine Mackstaller  
Sandra Maxfield  
Terry McNellis  
Elyce and Mark Metzner  
Adam James Michael and  
Manu Srivastava  
Rosanna Miller  
Caroline and Peter Morse  
Jean and Jordan Nerenberg  
Patrick J. O'Leary and  
Karen Yamasaki  
Karen Peters and Chris Thomas  
Joanne Sibley  
Gerald Schwartz  
Jacqueline Smith  
Erica and Ross Stutman  
Nancy Swanson  
Marlene Tompkins and Jim Pyne  
Judy Weill  
Karen and James Wohlgemuth

## Designer's Circle

**\$2,000 - \$3,999**

Anonymous  
Larry R. and Florence A. Adamson  
Fran and Jim Allen  
Rosalie and Al Baumrucker

Barbara and Franklin  
L. Bennett Sr.  
Barbara Bickel  
Sandra and Charles Bonstelle  
Susan Call  
Michael Candela and Dr.  
Marsha Brooks-Candela  
Amy Charles and Steve McMillian  
Virginia Lee Clements  
Exempt Trust  
Alicia and Jon Crumpton  
Jacklyn Conroy and  
William Maguire  
Mr. and Mrs. F. Don DeLong  
Catherine "Rusty" Foley  
Pamela and Thomas Frame  
Drs. Margot W. and J.D. Garcia  
Louise and Jim Glasser  
Cathleen and Thomas Godfrey  
Lauren and Michael Gordon  
Leslie Hall and Ted Jarvi  
Anne and David Hameroff  
Sandra and Elliott Heiman  
Ann McLaren Helstad  
Tom and Sandy Hicks  
Betty Hum  
Gary Jackson and  
Oscar De La Salas  
Helen and Robert Jennette  
Mack Jones  
Carol and Foster Kivel  
Drs. George and Maria Knecht  
Gina and Phil Koo  
Mr. and Mrs. Mark Landay  
Jane Langenfeld and  
Duncan Chang  
Gloria and Jim Lawrence  
Barbara Molotsky  
Nina and Brian Munson  
Trudi and Robert Murch  
Pat and Wayne Needham  
Caren and Thomas Newman  
Jennifer and Charles Putney  
Eileen and Tom Rotkis  
Brenda and Jim Rowland  
Rita and Steven Schlosser  
Trisa and Andrew Schorr  
Ron and Patricia Schwabe

# INDIVIDUAL DONORS

Marc and Tracy Schwimmer  
Ingeborg and Ralph Silberschlag  
Karen Thornton  
Weege and Scott Whiteford

## Insider

**\$1,000 - \$1,999**

Anonymous  
Joseph Acker  
John Arbuckle, Jr.  
Carolee and Daniel Asia  
Lori and David August  
Marianne Ayres  
Lani and Josh Baker  
Carolynn Bass  
Cindy and Frank Bennett  
Tony and Maria Beram  
Susan Berg  
Judy Berman  
Bradley Bohnert  
Tyna Callahan and Dimitri Voulgaropoulos  
Mr. and Mrs. D. Chavez  
Al and Sharyn Chesser  
Demion Clinco  
Elaine and Sidney Cohen  
Bruce Covill and Lucia Renshaw  
Barbara Cummings  
Charles Curtis  
Marcia and David Davenport  
Barbara Davis  
Stephen and Ruth Dickstein  
Mary Ann and Darryl Dobras  
Ms. Anna Don  
Tricia and Norman Don  
Laylah and Nathan Douglas  
Adrienne Drell and Frank Nitikman  
Pam and Richard Duchaine  
Jacques Dumont  
Martha Durkin  
Martin and Zarin Felli  
Margaret and Dennis Fesenmyer  
Frank Flasch  
Louise and John Francesconi  
Jane Gellman  
Carol and Paul Gerlach  
Michael Godnick  
Laurie and Chuck Goldstein  
Vicki Gotkin and Edward French  
Donita Gross  
Suzanne "Zippy" Gross  
Dr. C. Keith Groty and Reverend Mary V. Groty

Pam and Stan Hart  
Sharon and Louis Hekman  
Bill Hemelt and Anne Leary  
Susan Hetherington  
Judy and Michael Holser  
Tamberly and Randal Jacob  
Bob and Susan Johnstone  
Leianne Jones  
Nathan Joseph  
Adrienne Kalyna and Scott Michel  
Jamie and Bill Kelley  
Tom Kelly  
Bruce Kilbride and Lynn Krabbe  
Kit and Dan Kimball  
Tandy and Gary Kippur  
Barbara and Jay Kittle  
Karen and Sherwin Koopmans  
Nancy and Kent Kwoh  
Thomas Large  
Gloria and Jim Lawrence  
Marianne and Bill Leedy  
Janice and Robert Leff  
Joan LeFevre  
Dr. Alan Levenson and Rachael K. Goldwyn  
Dr. and Mrs. Martin Levy  
Sharon Lewis and Mayor Shanken  
Ann Lovell  
Anne and Ed Lyman  
Janet and Charles Lynn  
Jo Ann and Matthew Madonna  
Thom and Kathy Mansur  
Kit and Joan Marrs  
Michelle and Joseph Millstone  
Donnasu and Jim Moody  
Phyllis Morgan  
Karen Nackard  
Douglas Ng  
Parviz Nikraves and Agnes Stahlschmidt  
Peggy Odendahl  
Jane and William Pearson  
Karen Peters and Chris Thomas  
Sylvia Pozarnsky and Tom Riley  
Steven Ratoff  
Emily Mimi Ravits  
Ann H. Redding  
Wendy and George Reiter  
Carole and Ronald Rezetko  
Christine and John-Paul Rocznick  
Chuck and Terri Roehrick  
Drs. Adib and Vivi Sabbagh  
Deborah and Marc Sandroff  
Suzanne and Lewis Schorr  
Arlene and Morton Scult

Carol and Lex Sears  
Mitra Shahi and David Cohen  
Cathy Shell  
Steve and Shelly Silverman  
Evelyn G. and Daniel J. Simon  
Wesley Solinger  
Sue Tavel  
Marcia and Tyler Tingley  
Karen and Monty Turner  
Lisa Ungar and Robert Fridrich  
Tom Warne  
Mara and Bill Way  
Marion Weber  
Janice Wezelman and David Bartlett  
Lois Wienthink  
Jana and Mark Wilcke

## Patron

**\$250 - \$999**

Anonymous (15)  
William Ahearn  
Mary Ahern  
Pauline Albert  
Jill and Armando Alfaro  
Susan and Larry Allen  
Susan Anderson-Smith  
Jessica L. Andrews and Timothy W. Toothman  
Marilyn and Greg Anthony  
Lynn Argetsinger  
Gregory Ash and Susan Johnson-Ash  
Lyn Ashton and Herbert Stevenson  
Mara and Keith Aspinall  
Rae and Peter Aust  
Eva Bacal  
Pamela and Frank Bangs  
Jeannette and Robert Barnes  
Robin and Kent Batty  
Clare and Duane Baylor  
John Bechman  
Jane and Jim Becker  
Dr. Cash and Susanne Beechler  
Jeffrey F. Berg and Debra H. Paget  
Kathleen and Bill Bethel  
Carol Bishop  
Elizabeth Blair  
Peter Bleasby  
Betsy Bolding  
Meredith and Stephen Bolduc  
Carl and Charles Borkan  
Ellen Brackman  
Jonathan and Carol Bradley  
Martha Brightwell  
Diane and Donald Bristow  
Sallee Britton  
Suzanne and Don Brown  
Mitchell Bunting and Michael Heimbuch  
Bonnie and David Burnett  
Patrick Butler and Debbie Goodman-Butler  
Burton Cagen  
Diana and Jay Caldwell  
Karen and Jim Carlson  
Patricia and Jon Carlson  
Linda and Ray Carson  
Geraldine Cass  
Elaine and Morton Cederbaum  
Pete Celaya and Charlene Vasquez  
Dr. Jay and Betty Citrin  
Jill and Kipp Clark  
Stacey and David Cohen  
Arlan Colton and Jeff Ramos  
Jennifer and Jay Cook  
Jan Copeland  
Lynn Corrigan  
Andrea and Harry Crane  
Paula and Michael Culbert  
James Cummins  
Sandy Czachor  
Sherry Dailey  
Lawrence C. Dennis  
Carol Des Cognets  
Barbara Dawson  
Raul Delgado  
Susan and Barclay Dick  
Jan and Mike Doughty  
Carole and David Drachler  
Diane Drewery and Don Wilks  
Carrie and Chuck Durham  
Barbara and Gerald Ehrlich  
Mary and John Enemark  
Gordon Stuart Ewy  
Merle and Michael Fajans  
Shera and Doug Farnham  
Cindy Ferro and Alan Citrin  
Ronna Fickbohm and Jeff Willis  
Nancy and Richard Fintzy  
Mary Jo Fitzgerald  
Lucille Flaaten and Jan Olav  
Judith and Richard Flynn  
Katherine Fogel  
Sarilyn and Sherman Fogel  
Kathy Garrett



# INDIVIDUAL DONORS

Becky and Dave Gaspar  
 Claire Genser  
 Barry Gillaspie  
 Bruce Gillaspie  
 Miriam and Richard Glabman  
 Ann H. Goldberg  
 Midge and Gerald Golner  
 Frank Goodyear  
 Paulette and Joe Gortter  
 Julia Gordon  
 Dr. Robert W. Gore  
 Stephen N. Graff  
 Michael J. Grassinger  
 Dennis Grether and  
 Catherine Kelly  
 Ruth Ann and Thomas Gribb  
 Pamela Grissom  
 Jennifer Gross  
 Ann and Mike Guilfooy  
 Anjleen and Harry Gumer  
 Jerome and Anita Gutkin  
 Sara and Andrew Gyorke  
 Rita Hagel  
 Jacob Halliday  
 Michael Hamant MD and  
 Lynnell Gardner MD  
 Robin and John Harris  
 John Hay and Ruth Murphy  
 Marilyn Hayden  
 Candy and Jeffrey Hazan  
 Pat and John Hemann  
 Bette Henriques  
 James Herzfeld  
 Marcia and Gregory Hilliard  
 Sarah Hiteman  
 Lynn R. Hoffman  
 Marta and Robert C. Holl  
 Dr. and Mrs. Barry Holt  
 Gerri and Barry Holt  
 Lisa and Gary Israel  
 William Jacobs  
 Caroline Jank  
 Thomas Jensen  
 Mary and Thomas Johnson  
 Pam Johnson  
 Richard and Shirley Johnson

Joanne and Paul Johnston  
 Marilyn Joyce  
 Denise Just  
 Robin and Michael Kaiserman  
 Toni and Joseph Kane  
 Hy Kaplan and Sue Vardon  
 Guinn and Nate Kappler  
 Julie Karcis and James Seward  
 Fran and Jeff Katz  
 Louise and Joseph Keane  
 Lendre and King Kearns  
 Martha and George Kellner  
 Cynthia and Alan Kempner  
 Stephen Klaffer  
 Suzan-Oda and Bill Knese  
 Michael Kramer  
 Tamar Rala Kreiswirth  
 and John DeLuca  
 Karen and Arvie Lake  
 Sally Lanyon and Paul Hawkins  
 Katharine and John Lauder  
 Joan Le Fevre  
 Ellen and Philip Leavitt  
 Laura and Charlie Lentner  
 Mickey and Jeff Leonard  
 Lori Levine and Gary Benna  
 Bertie Levkowitz and Thomas Herz  
 Marcia Lindley  
 Susan Markovich  
 Sandra Marshall and  
 Gerald Maggiora  
 Loriane and Patrick Martin  
 Daniel Matlick  
 Shirley and Stanley Matlick  
 Ann and George Mavko  
 Sandra McNabb  
 Eleanor and George Mink  
 Andrea Molberg and  
 Hank Greenleaf  
 Virginia and David Morthland  
 Linda and Donald Mower  
 Peggy and Timothy Mulcahy  
 Barbara and Larry Nelson  
 Alice and Edward Neuwirth  
 Margie Nicholson  
 Terence Nordahl

Benjamin Norton  
 Elise and Rick Oestreich  
 Michael and Patricia Ore  
 Jones Osborn and  
 Stephanie Mullins  
 Susan and Chuck Ott  
 Suzanna and Steve Pangburn  
 Gilford L. Parrish  
 Esther M. Pasalis  
 Alyce Pennington  
 Sheila Peress and John Velez  
 Clyde and Jane Perlee  
 Jeanne Pickering and  
 Mike Andrew  
 Emily Rosenberg Pollock  
 Noah Pollock  
 Valerie and Herschel Richter  
 Kathy and Jack Rife  
 Drs. Linda Riordan and  
 David Siegel  
 Denise and Curt Robinson  
 Alice and Bill Roe  
 Anne Roediger  
 Eileen and William Roeske  
 Quinta and Philip Rosenberg  
 Shirley and Thom Rossa  
 Mira and Kent Rossman  
 Sandra Rutherford  
 Donna and Darrell Sabers  
 Sally A. Sample  
 Barbara Sattler and Ken Hegland  
 Judy and Michael Schaffert  
 Eric Scharf and Elizabeth Wheat  
 Sally and Robert Schleu  
 Patricia and Harry Schlosser  
 Marge Schneider and Ed Shirley  
 Al and Pinky Schuele  
 Elizabeth Schulman  
 Robyn and Edward Schwager  
 Arleen and Fred Schwartz  
 Dr. Howard and Trudy Schwartz  
 Jeffrey A. Scudder  
 Polly and Joe Seeger  
 Isaac Shaw  
 Betty Shelby  
 Bill Sheppard and Range Shaw

Michael Sillyman and Amy Gittler  
 Rita and Harvey Simon  
 Raj Sivananthan and  
 Linda Kay Wolfkeil  
 Cathleen and Bill Small  
 Patricia and Mark Smallsreed  
 Glenn Smith  
 Joyce and Jim Smith  
 John Smith  
 Richard Snodgrass and  
 Merrie Brucks  
 Richard Snyder and Linda Jensen  
 Wendi Solinger  
 Jennifer and Michael Spencer  
 Rica Spivack  
 Bob Stankus and Lynne Lagarde  
 David Steele  
 Claire Steigerwald  
 Darryl and Helen Stern  
 Jill and Daniel Stevenson  
 Patricia Stewart  
 Olga and James Strickland  
 Charles H. Strub  
 Michael and Jeanne Sturgis  
 Laura Sullivan  
 Lori and Richard Surina  
 Hugh and Allyn Thompson  
 Gayle A. Traver  
 Catherine and Bruce Uhl  
 Lisa Ungar and Robert Fridrich  
 Rick Unklesbay and  
 Margaret Norem  
 Gary Waugh  
 Mary and Ronald Weinstein  
 Wendy and Elliott Weiss  
 Janice Wezelman and  
 David Bartlett  
 Nancy and Peter White  
 Barbara Wich  
 Mary and John Wilber  
 Don Wilks and Diane Drewery  
 Jeffrey Willis  
 Pamela and Dennis Winsten  
 Edwin Zimmermann

## Become a Donor Today!

Join others in ensuring that ATC continues to play a vital role in the cultural vibrancy of our community ... engaging and inspiring thousands of students, employing professional theatre artists, and providing abundant outreach programs across the state.

**Donate at [atc.org/give](http://atc.org/give) or call 520-463-7669.**





# INDIVIDUAL DONORS

List reflects donations made July 1, 2022 to December 3, 2024

## GIFTS IN HONOR OF

**Matt August** by Armin Shimerman and Susan and Jeffrey Rein

**Beverly Arrington** by Florence and Tony Franklin

**Gertrude Barnes** by Beverly Arrington

**Bill Bethel** by Shelby and Linda Silverman and Martha Castleberry

**Betsy Bolding** by Dorothy Kret and Kathleen and Bill Bethel

**Aune DeWitt** by Schuyler DeWitt

**Mary Ann and Darryl Dobras** by Sara Jane and Ben Norton

**Pat Engels** by Barbara Provus and Fred Wackerle, and Dennis Grether and Catherine Kelly, Barbara Molotsky, Polly Jensen, Mallory and Donald Riegger, Mary Goldstein, Caren and Thomas Newman

**Deanna Evenchik-Brav** by Fran and Jeff Katz

**Robert and Laurie Glaser** by Debbie Goodman-Butler and Patrick Butler

**David Ira Goldstein** by Joel and Cathy Bez

**Jeff Guldner** by Mallory Lebovitz

**Rita Brown Herold** by Judy Warren

**The Connie Hillman Foundation** by Anonymous

**Tim Janes** by Katherine Gregg and Maureen Metcalfe

**Jodi Kammerer** by Kevin Kammerer

**Joshua Kassel** by Anonymous

**Michael and Beth Kasser** by Carolee and Daniel Asia, Jarvis Foundation, and Loretta and Chacho Romero

**Anne Kleindienst** by Bill Sheppard and Range Shaw

**Kit and Joan Marrs** by DRD Investment Group, LLC

**Max Morgan** by Ann and David Bright

**Emily Muirhead** by Julie Muirhead

**Jack O'Brien** by Armin Shimerman

**Carley Elizabeth Preston** by Susan Markovich

**Emily Rosenberg Pollock** by Betsy Bolding

**Mary Beth Radke** by Anonymous

**Susan and Jeffrey Rein** by Anonymous, Dana Narter and Ed Baruch, and Phil and Gloria Cowen

**Rosemary Samuelson** by Wayne Samuelson

**James Sullivan** by Marie Darmer

**Paula Taylor** by Susan and Jeffrey Rein

**Laura Thomas** by Deborah Haeseler

**Geri Wright** by Kay and Walter Oliver and Susan and Jeffrey Rein, and Anonymous

## GIFTS IN MEMORY OF

**Betty Bublitz** by Anonymous

**Angus E. Burke** by Pamela and Dennis Winsten

**Bruce Davis** by Irene and Oscar Rockhold, Kerri and Shaun Druckmiller, Louise and James Weiss, Anonymous, and Barbara Unger and Ted Sakano

**Frank Davis** by Bill Sheppard and Range Shaw

**Nick Candela** by Michael Candela and Dr. Marsha Brooks-Candela

**Mason Carr** by Julie Goddard

**Marcia DeTorto** by Colleen Dunne

**Kathleen Flasch** by Frank Flasch

**Steve Goulding** by Peggy Goulding

**Francis Jank** by Caroline Jank

**Lucia Mar** by Maria Mar

**June J.C. Martin** by Diana and Jay Caldwell

**Celia McMurry** by Anonymous

**Deanne Molitor** by Lynn Corrigan

**Elsiene Schneider** by David Schneider

**Marjorie Sharp** by Jean Beck

**Geri Silvi** by Jennifer and Michael Spencer

**Susan Small** by Jessica L. Andrews and Timothy W. Toothman

**Larry Smith** by Bill Sheppard and Range Shaw

**Richard Stahl** by Bill Sheppard, Range Shaw, Raymond Kemp and Richard Douglas

**James Sullivan** by Laura Sullivan, Marie Darmer, Deborah Haeseler, Sarajeen and Jeri Harwood, Rona Rosenberg, and Anonymous

**Ray Tevis** by Anonymous

**Larry Tippie** by Anonymous

**Patsy Waterfall** by Quinta and Philip Rosenberg

**Frances Yee and Henry Kelly** by Anonymous

## LAND ACKNOWLEDGMENT STATEMENT

Arizona Theatre Company recognizes the rich history of the 22 American Indian communities in Arizona.

It is important to understand the cultural history of the land and our place within that history.

We invite you to learn more by visiting local cultural sites like the Heard Museum: [heard.org](http://heard.org) or the Amerind Museum: [amerind.org](http://amerind.org), among others.

## LEGACY SOCIETY

Honors those friends of ATC who have established a gift through a bequest, trust arrangement, or other estate plan provision.

Anonymous\*

Anonymous

Jessica Andrews and  
Timothy W. Toothman

Cameron and Mary Artigue

Helen and Robert Begam\*

Nathaniel and Suzanne  
Bloomfield

Dr. and Mrs. James F. Blute, III

Betsy Bolding

Thomas Chapman

Steven Cohen and  
Michael Godnick

Jacklyn Connoy and  
William Maguire

Len\* and Doris Coris

The Estate of Frank K. Davis\*

Slivy Edmonds\*

Pat Engels

Bob and Nancy Eschrich

Carol Fink

Joanie Flatt

Michael O. Flatt\*

Ted and Barb Frohling

Harry and Lois Garrett

Dr. Mary Jo Ghory

Chester and Ann Goldberg\*

Mr. Terrance M. Hanson

Mr. and Mrs. Edward J. Harrison

Andrew F. Holtz

Jacqueline Hufford-Jensen  
and Gregory Kroening

I. Michael and Beth Kasser

Dr. Philip C. Keller\*

Bill and Kathy Kinney

Gregory Kroening

Maxine and Jonathan Marshall\*

Joan A. Morris

Peggy and Gerry\* Murphy

Terry and Jerry Neuman

Don\* and Peg Nickerson

Martha and Terry Allen Perl

Endowment for the Arts

Ronald Robinette and

Sharon Roediger

Arnold and Carol Rudoff

Robert V. Schauer and

Melvin E. Mounts\*

William C.\* and Deborah  
Chisholm Scott

Enid and Michael Seiden

F. William Sheppard

Daniel J. and Evelyn G. Simon

Richard P. Stahl\*

Robert\* and Shoshana Tancer

Marlene Tompkins

and James Pyne

Roy Van Note

Virginia A. Weise\*

Mark and Taryn Westergaard

Maggie White

Richard H.\* and Linda Whitney

\* deceased

## ATC'S LEGACY SOCIETY

The future is made more certain  
by those who invest in it.



Cast of *Fiddler On The Roof*. Photo: Tim Fuller.

ATC's Legacy Society was established to recognize individuals who have made a planned gift to ensure the Company's vision lives on well into the future.

Whether you contribute through a bequest in a will or trust, or a beneficiary designation on your retirement account, life insurance, or other estate-planning vehicle, your legacy gift ensures that ATC continues to bring world-class theatrical productions to our stages, reaching generations for years to come.

### LEGACY SOCIETY BENEFITS:

- Recognition in the ATC program book for the entire season.
- Exclusive updates from our Artistic department throughout the season.
- Exclusive invitation to our annual Legacy Society Luncheon event.



# BLUES IN THE NIGHT

IS MADE POSSIBLE  
WITH GENEROUS SUPPORT  
FROM OUR CORPORATE PRODUCTION SPONSOR



**Wealth  
Management**

Schaefer Present Corte  
Mance Investment Group

**Richard Schaefer, AWM**  
Senior Vice President – Branch Director

**Gustavo Corte, CFP®**  
First Vice President – Financial Advisor

**Bobby Present**  
Senior Vice President – Financial Advisor

**Doug Mance, AWM, CFP®**  
Senior Vice President – Financial Advisor



# BLUES IN THE NIGHT

---

## Special Thanks to the **Cultural Arts Network**

Johnene Adams Beverly Arrington Rhoshawndra Carnes

Florence Franklin Doris Greenway Donta McGilvery

Kay Oliver Shannon Roberts Connie Robinson Denise Robinson

Joan Sherwood Paulette Smith Gladys Wortham





# RISE

Did you know ATC produces more than 225 performances each season? In our 57-year history, that's more than 13,200 performances in front of live audiences like you! Yet ticket sales only cover 45% of our expenses.

**RISE UP** by donating today.

Be the driving force behind unforgettable performances, student matinees, and community outreach. Your donation propels us into a new era of creativity and impact.

# ABOVE



Any amount makes an IMPACT ...  
**DONATE TODAY**



[atc.org/donate](https://atc.org/donate)



3/23/25 - 4/12/25

## A WORLD PREMIERE!

By Pulitzer Prize-winning playwright Robert Schenkkan

# BOB & JEAN

## A LOVE STORY



**atc**  
ARIZONA  
THEATRE  
COMPANY

BY ROBERT SCHENKKAN  
DIRECTED BY MATT AUGUST

***Nostalgic.  
Romantic.  
Inspiring.***

In the heart of 1940s New York City, Bob and Jean's electric connection is abruptly severed by World War II. Bob becomes a bomb disposal officer in the Pacific, while Jean boosts troop morale as a USO actress. Through passionate and desperate letters, they navigate the trials of war, Broadway, and the human heart. Will their love withstand the chaos of battle and distance? A new play written by Pulitzer Prize- and Tony Award-winning and Emmy-nominated playwright Robert Schenkkan, *Bob & Jean: A Love Story* is a stirring and romantic world premiere that tells the remarkable story of an exhilarating courtship.

**ATC.ORG / 833-ATC-SEAT**

ATC AT THE TEMPLE OF MUSIC AND ART 330 S. SCOTT AVE. TUCSON



Scan QR Code  
for more details  
or visit **atc.org**



# ABOUT ATC



Recognized as the Official State Theatre of Arizona with a legacy started in 1966, ATC has an unwavering commitment to delivering exceptional theatrical experiences to the communities of Tucson and Phoenix. As the sole LORT (League of Resident Theatres) professional nonprofit regional theatre in Arizona, ATC proudly sets the gold standard for artistic excellence and innovation.

ATC is led by Executive Director Geri Wright and Kasser Family Artistic Director Matt August. Each season, ATC employs world-class artists to produce professional theatre, reaching an audience of over 130,000 patrons through mainstage productions, student matinees, and community outreach.

---

## MISSION

Arizona Theatre Company's mission is to create world-class theatre about what it means to be alive today – inspiring curiosity and creativity, sparking empathy and joy – bringing all Arizonans together.

## VISION

Arizona Theatre Company's vision is to transform the lives of every Arizonan through the power of theatre.

---

**ATC supports its vital mission with these key initiatives:**

### ATC Mainstage

Each season, ATC produces five mainstage productions, bringing together the best talent from across Arizona, the country, and the world. ATC

playwrights, directors, designers, actors, and production teams represent the finest artists and technicians working today.

### Engagement in Phoenix and Tucson ... and Beyond

ATC operates in two major cities, unlike any other LORT theatre in the country, providing a place for communities across Arizona to gather, share, and explore the art-making process, reaching beyond the metropolitan areas of Tucson and Phoenix, enriching the theatre learning experience for all.

### New Play Development

ATC provides playwrights and theater makers, both locally and internationally, a place to develop their work. Through workshops and readings, we give artists a place to incubate and launch productions, both at ATC and beyond. ATC is also proud to support emerging voices with the annual National Latine Playwrights Award and Festival.

### Education and Outreach

ATC delivers inspiring experiences in a number of ways, both connected to our stage and beyond our walls, in schools, and across the state. Core programs of our education efforts include Student Matinees, playguides, and post-show discussions.

### Living Our Values (LOV) Initiative

We strive to put our values at the center of who we are and what we do – continuously connecting our audiences, artists, staff, and stakeholders to our core values, creating a true sense of belonging, equity, and diversity within the organization and the communities we serve. Nowhere is this more important than the work we build and perform on our stages.

The Temple of Music and Art is a beautifully refurbished 1927 theatre, built in the Spanish Colonial style that flavors so much of our city. The following services and policies ensure your comfort and enhance your experience at the theatre.

## THEATRE POLICIES

**Latecomers** – Latecomers will be seated only at an appropriate and predetermined break in action. In order not to disturb patrons who are already enjoying the performance, latecomers may be seated in alternate locations until intermission.

**Cameras** – As a courtesy to our patrons and the actors, the use of cameras and recording devices is not permitted within the theater during the show.

**Cellphones, Smart Watches & Light/Sound-emitting Devices** – Please silence or turn off all cellphones, digital watches, or any other noise-

making or light-emitting devices for the courtesy of other patrons and the actors.

**Children** – Children under 5 are not permitted in the theatre during performances.

**Emergency calls** – Emergency calls may be made to the House Manager’s cell phone directly: 520-547-3981.

**Smoking** – Smoking is not permitted anywhere within the building. Look for designated smoking area signage. In the event of smoking onstage, a sign will be posted in the lobby.

## ACCESSIBILITY SERVICES

**Assisted Listening Services** – The theatre is equipped with the Sennheiser Mobile Connect listening system for use by patrons with partial hearing loss or limited range of hearing. An Ambassador Usher or our House Manager can assist you with connecting hearing aids to the system. Additionally, devices may be checked out in the Lobby to access the system. Please be prepared to leave a driver’s license or other form of identification while using your headset.

**American Sign Language** – Many productions have a performance available in American Sign Language (ASL). For information about the dates of our ASL performances, please contact the Box Office.

**Captioning** – Coordinated with the action onstage, those in open-captioned seating will be able to read the play’s dialogue displayed in large letters on an LED screen. For open-captioned performance dates, contact the Box Office.

**Accessible Seating** – is available via the Box Office for all performances. If you would like seating assistance at the theatre, please contact the House Manager at **520-547-3981**.



- 1) Join the Wifi
- 2) Download the app
- 3) Select your audio channel or scan the QR Code

5/18/25 – 6/7/25

“*Ms. Holmes & Ms. Watson – Apt. 2B* simultaneously plays homage to and flips on its head the detective story tropes to show what happens when women are in charge.”

- BroadwayWorld

# Ms. Holmes & Ms. Watson - Apt. 2B



**atc**  
ARIZONA  
THEATRE  
COMPANY

**Fast-Paced.  
Hilarious.  
Mysterious.**

Modern-day adventure awaits with the most iconic detective duo of all time reimagined as a gal-pal comedy in *Ms. Holmes and Ms. Watson – Apt. 2B*. Set in present-day London, depressed American divorcee Dr. Joan Watson moves in with the carefree and eccentric Shirley Holmes, only to find themselves entangled in a series of mysteries, all related to a cunning supervillain who remains one step ahead of them. This twist on Doyle's cherished Sherlock Holmes characters delivers non-stop laughter inside a rollicking murder mystery that promises fun for everyone.

**ATC.ORG / 833-ATC-SEAT**

ATC AT THE TEMPLE OF MUSIC AND ART 330 S. SCOTT AVE. TUCSON



Scan QR Code  
for more details  
or visit **atc.org**

**Geri Wright**  
Executive Director

**Matt August**  
Kasser Family Artistic Director

## ARTISTIC & PRODUCTION

**ASSOCIATE PRODUCER**  
Matthew Wiener

**PLAYWRIGHT-IN-RESIDENCE**  
Elaine Romero

**2024/2025  
RESIDENT ARTIST**  
Aaron Cammack

**PRODUCTION MANAGER**  
Jamie S. Lara

**ASSOCIATE  
PRODUCTION MANAGER**  
Sheldon Lane

**ASSISTANT  
PRODUCTION MANAGER**  
Emma Prange

### SCENERY

**TECHNICAL DIRECTOR**  
Arthur Potts

**ASSISTANT TECHNICAL  
DIRECTOR**  
Jared Strickland

**LEAD CARPENTER**  
John Crain

**CARPENTERS**  
Larry McDonald  
Cory Walters

**PAINTS**

**CHARGE SCENIC ARTIST**  
Charlotte Alcorn

**ASSISTANT CHARGE  
SCENIC ARTIST**  
Sammie Nickel

### PROPERTIES

**PROPERTIES SUPERVISOR**  
Faith Boucher

**PROPERTIES ARTISAN**  
Aidyn Corkell

**PROPERTIES & SCENIC  
CARPENTER**  
Miguel Barragan

### COSTUMES & WARDROBE

**COSTUME DIRECTOR**  
Shelly Williams

**ASSISTANT  
COSTUME DESIGNER**  
Lindsay McDonald

**LEAD DRAPER**  
Phyllis Davies

**STITCHER**  
Sarah Willwater

**WIG & MAKE-UP SUPERVISOR**  
Becca McCullough

**COSTUME CRAFTS ARTISAN**  
Sandahl Tremel

**WARDROBE SUPERVISOR**  
Jacob Miller

**TEMPE/PHOENIX  
WARDROBE SUPERVISOR**  
Cameo Gustafson

### ELECTRICS & PROJECTIONS

**LIGHTING & PROJECTIONS  
SUPERVISOR**  
Tiffer Hill

**LEAD ELECTRICIAN**  
Allison Gammons

**STAFF ELECTRICIAN**  
Ryan Darland

**TEMPE/PHOENIX  
LIGHT BOARD OPERATOR**  
Wade Yorke

### SOUND

**SOUND SUPERVISOR**  
Mathew DeVore

**PRODUCTION SOUND  
ENGINEER**  
Alexis Glas

### STAGE MANAGEMENT & CREW

**PRODUCTION ASSISTANTS**  
Savannah Gersdorf  
Mandy Spartz

**TEMPE/PHOENIX  
THEATRE GENERALIST**  
Anthony Muldrow

## ADMINISTRATION

**GENERAL MANAGER**  
Julie Fancher

**CHIEF OF STAFF**  
Charlene Vasquez

**DIRECTOR OF OPERATIONS  
AND EVENTS**  
Nick Cianciotto

**COMPANY MANAGER**  
Cat Tries

**ASSISTANT COMPANY  
MANAGER**  
Xia Monet

**DEVELOPMENT &  
MARKETING**

**CHIEF DEVELOPMENT  
AND MARKETING OFFICER**  
Paula Taylor

**DIRECTOR OF ANNUAL  
FUND AND STEWARDSHIP**  
Carley Elizabeth Preston

**DIRECTOR OF DONOR  
RELATIONS**  
Cami Cotton

**GRANTS MANAGER**  
Gretchen Pace

**DIRECTOR OF MARKETING**  
Bitty Rosenberg

**MARKETING MANAGER**  
Nicholas Kuhn

**CREATIVE AND  
BRAND MANAGER**  
Richard Giuliani

**DIGITAL STORYTELLER &  
PUBLIC RELATIONS MANAGER**  
Marina Nelson

**MARKETING OUTREACH  
COORDINATOR**  
Ethan Hoover

### FINANCE

**CHIEF FINANCIAL  
OFFICER**  
Mark Kochman

**SENIOR ACCOUNTANT**  
Nancy Kilmer

**ACCOUNTING  
COORDINATOR**  
Patricia Walter

### BOX OFFICE & HOUSE MANAGEMENT

**DIRECTOR OF  
PATRON SERVICES**  
Juliet Martin

**ASSISTANT DIRECTOR OF  
PATRON SERVICES**  
Linda Schwartz

**PATRON SERVICES MANAGER**  
Richard Ragsdale

**ASSISTANT BOX  
OFFICE MANAGERS**  
Carrie Luker  
Keith LaSpaluto

**PATRON SERVICES  
ASSOCIATES**  
Katelin Andrews  
Sophia Nagore  
Sarah Smiley  
Gadija Samie  
Wendy Sander

**HOUSE MANAGER**  
Bill Bethel

### FACILITIES

**FACILITIES MANAGER**  
Horace Ashley

**MAINTENANCE SUPERVISOR**  
Dean Morgan

**MAINTENANCE TECHNICIAN**  
Jose Varela  
Andrew Pearson

**BAR STAFF**  
Xia Monet  
Caitlin Pepe  
Zoe Soleil  
Fran Greer  
Heather Glenn