

HOW TO MAKE AN American Son

By christopher oscar peña
Directed by Kimberly Senior



Recipient of
**NEA GRANTS
FOR ARTS
PROJECTS**

atc
Arizona Theatre Company

2021/2022



JUNE 30 - JULY 17, 2022

ARIZONA THEATRE COMPANY

SEAN DANIELS 
THE KASSER FAMILY ARTISTIC DIRECTOR

GERI WRIGHT 
MANAGING DIRECTOR

PRESENTS

HOW TO MAKE AN AMERICAN SON

BY
CHRISTOPHER OSCAR PEÑA

PRODUCTION STAGE MANAGER
GLENN BRUNER* 

ASSISTANT STAGE MANAGER
MOLLIE HEIL 

SCENIC DESIGNER
ANDREA LAUER

COSTUME DESIGNER
RODRIGO MUÑOZ

LIGHTING DESIGNER
REZA BEHJAT

SOUND DESIGNER
CRICKET S. MYERS

INTIMACY DIRECTOR
ALEX J. GOULD

CASTING DIRECTORS
ALAINE ALLDAFFER, CSA AND LISA DONADIO

DIRECTED BY
KIMBERLY SENIOR

how to make an American Son was first produced at Arizona Theatre Company; Sean Daniels, Artistic Director | Geri Wright, Managing Director

**Denotes members of Actors' Equity Association, the Union of Professional Actors and Stage Managers in the United States.*

2021/2022 SEASON SPONSOR: **I. MICHAEL AND BETH KASSER**



CAST (IN ALPHABETICAL ORDER)

MERCEDES.....	CRISTELA ALONZO
RICHARD.....	EDDIE BOROEVICH*
RAFAEL.....	ALEXANDER FLORES*
ORLANDO.....	FRANCISCO JAVIER GONZÁLEZ*
MANDO.....	GABRIEL MARIN*
SEAN.....	PATRICK WEBER

**Denotes members of Actors' Equity Association, the Union of Professional Actors and Stage Managers in the United States.*

THERE WILL BE NO INTERMISSION

SETTING

EARLY 2000s, THE SILICON VALLEY

ADDITIONAL STAFF

VOICE/DIALECT COACH.....	MICHA ESPINOSA 🌻
SCENIC DESIGN ASSISTANT.....	GAYA CHATTERJEE
SCENIC DESIGN INTERNS.....	DANIELA GOYTIZOLO ADDIE GRACE HILLE



ARIZONA ARTISTS INITIATIVE ATC is committed to Arizona artists. From our staff who live in Arizona and create the productions you see to the artists who help create readings and other productions, Arizonans take a leading role in everything we do. In addition to everyone on the staff page, we note individual artists on shows who are from Arizona.

On this original Arizona Theatre Company production, the ATC Production Staff is responsible for scenic construction, costume construction, lighting, projections, sound, props, furniture, wigs, scene painting, and special effects.

Cell phones and other devices that make a noise can greatly disturb your fellow audience members and the performers. PLEASE TURN THEM OFF before the performance.

Cover: Esser Design

Arizona Theatre Company operates under agreements between the League of Resident Theatres (LORT) and Actors' Equity Association, the Union of Professional Actors and Stage Managers in the United States; Stage Directors and Choreographers, an independent national labor union; and United Scenic Artists Local USA-829, IATSE.



The Actors and Stage Managers employed in these productions are members of Actors' Equity Association, the Union of Professional Actors and Stage Managers in the United States.



The Director is a member of the Stage Directors and Choreographers Society, an independent national labor union.



Scenic, Costume, Lighting and Sound Designers in LORT Theatres are represented by United Scenic Artists Local USA-829, IATSE.

LETTER FROM BOARD CHAIR CHAR AUGENSTEIN



It has been my HONOR and PRIVILEGE!

I begin my days with gratitude, and on many days throughout this Season I began with gratitude for each and every one of you who chose to travel this journey with us. THANK YOU! As a result of your generosity of support, we have been able to strengthen your theatre. Our heartfelt gratitude for making a difference! Theatre has the ability to make a lasting impression, often impacting and transforming lives. With your continuing belief in ATC, we will evolve into everything this community richly deserves. It has been an honor to serve, having the lifelong, treasured gift of getting to know so many of you. You will forever have our utmost respect and admiration for your undying support, constant motivation and shared affection for our beloved ATC.

Although my term as Board Chair comes to an end, my passion for our cherished ATC remains a constant. I consider myself one Lucky Lady! I have had the honor of working alongside the most amazing ensemble of talented individuals, ever empowering me with their wisdom to be the very best version of myself possible. My extraordinary Trustees, our unparalleled Leadership, their key Officers and their supporting Cast, are exemplary to a person. An organization is only as strong as its weakest link ... we have none!

A special thanks to my Fellow Trustee, Pat Engels, who has served in the capacity of Chair-Elect. She invested a considerable amount of time to guarantee a seamless transition, and that it will be! We found ourselves in ongoing communication, ever consistent in resolve. It has been my privilege to work with Pat, and I am confident you will welcome her in the same beautifully receptive manner you did myself.

Thankfulness is the quickest way to JOY ... and I am ever thankful to ALL of you for the unadulterated joy you have gifted me these past two years.

See you at the theatre!

A handwritten signature in cursive script that reads "Char Augenstein".

LETTER FROM THE KASSER FAMILY ARTISTIC DIRECTOR SEAN DANIELS

chris peña will be a leading force in the American Theatre, and I'm thrilled he calls Arizona Theatre Company home.

He is already at the epicenter of quality work, engaged communities, and artists who are just nice enough you want to spend an afternoon with them. He has multiple TV shows and movies happening, but his first love is always engaged communities around a piece of theatre. My type of guy.

chris peña is Arizona Theatre Company's Artistic Associate, so while I'm excited about the show, I'm always more interested in the artist long-term than a singular project – and I believe in chris peña ... his voice and his impact on the American Theatre.

That all being said, I do feel like this show is the perfect way to introduce him to Arizona and a great opportunity to produce a show that is about our country, and perhaps even more importantly, our state in this moment.

chris was my first hire once I was hired, as I knew that for the theatre to stay relevant and truly reflect its community, we would need a Latinx artist to be an internal leader and external artist.

His play deals with a level of nuance to race conversation rarely seen in the larger houses of the American Theater. These first-generation Americans are a generation that is born into a certain level of comfort – more financial security than their parents have – but a generation that still faces deep-seated unconscious (or conscious) structural racism. This generation of kids, by being born here, is every bit as American as other kids whose families were once immigrants from somewhere else.

chris is also interested in investigating complex issues, as this play arrives at the intersection of race and sexuality. So often, LGBT+ kids of color are forced to only look at their story, and life, through one narrative or the other. chris wants to provide a lens for the truly complex, which is ultimately the most human. He is unafraid to dive into that subject, asking audiences to engage in the exact conversation happening in homes/schools all across our country – but not on our stages until chris.

As the State Theatre, ATC wants to reflect our state – one that embraces differences (sometimes

better than others), a state that is 32% Latinx, with an audience that does not always agree politically – and it's important for us to not only tackle the questions of race and racism, but to have deeper, more complex conversations about it.

I think of it as a very unique responsibility to do theatre for an audience where I don't know, and don't need to know, the political beliefs of my audience. To me, that is what it means to be running a cultural institution in 2022. Just because you vote one way or another in no way means we share the same beliefs – BUT, we all have a unique opportunity to learn more about each other, to better understand the challenges we don't even perceive, and to empathize better with our fellow humans.

One of the things I love about Arizona Theatre Company is that we have an audience who enjoys seeing a play they can chew on, and discuss, and debate – for days. And chris is providing that. Complex, expertly crafted stories you cannot see anywhere else except ATC.

And who is the best director for plays “you chew on?” Who helmed the Pulitzer Prize-winning *Disgraced* on Broadway? (Which honestly was the last time I sat in a theatre and thought, “I have never seen this story before – on stage or on TV.”) Kimberly Senior. And let me tell you what I love about Phoenix Suns fanatic and Broadway director Kimberly Senior.

She takes care with each and every moment – each step of the process – and she ingrains herself into the organization to make sure everyone understands the type of work she is doing. It's not the usual “gun for hire” director scenario, and it changes organizations, it makes them better. It means that the art, and the language to talk about it, is truly available to all. Trust me, we're lucky to have her here.

Thanks for joining us. Thanks for being part of the conversation.



Sean Daniels
The Kasser Family Artistic Director
Arizona Theatre Company

We did it! As we close out the final show of the most unique season in our history, I am reminded just how valuable family is, not just our biological family but the family we choose. So much goes into making a family work – being collaborative, finding moments of sheer joy, sharing in hard decisions, communicating, laughing, and sometimes crying. It is the shared experiences that draw us closer and bond us.

The staff of ATC, guest artists, Board of Trustees, donors, subscribers, and patrons make up the amazing ATC family that has brought us to this point. It is thanks to the hard work of our very dedicated staff, the masterful guidance and leadership of our board – along with your amazing support – that ensures outstanding and innovative live theatre thrives on our ATC stages.

I would like to especially thank Char Augenstein, ATC's Board of Trustees Chair during the last two years, who has been my thought partner and true counselor. Her leadership of the entire board and tireless work on behalf of ATC has been awe-inspiring. And looking towards the future, I am excited to continue to see our board grow under incoming Chair Pat Engels, who provides invaluable experience and outstanding leadership.

Not many know that our staff shrank by 75% during the pandemic, and that small-but-mighty team jumped in and did anything necessary to ensure we pulled through. Thankfully, we have been able to add many staff as we came back to our stages with help from your generous donations. Another little-known fact is that ticket sales underwrite only a portion of our production costs; it is the donations from folks like you that enable us to create live theatre each season.

Just as *how to make an American Son* tells the story of a father's unconditional love, our 2022/2023 season captures the dynamics and changes many families face. *The Lion* tells about the renewed relationship between a father and son, while *The White Chip* and *Pru Payne* explore the changing and growing relationships between mothers and sons. *The Wickhams* continues the story of the Benner sisters and their families as well as the servants and the family they have chosen. *The Legend of Georgia McBride*, which only a small percentage of our audience was able to see in 2020, watches a chosen family grow, while *The Glass Menagerie* famously presents the many dynamics a family can bring.

I am truly proud and humbled by this family – my chosen family – that makes up ATC. Like every family, we continue to learn and grow as we falter and succeed. Through all of the unknowns of the past two years, there are some things that I do know:

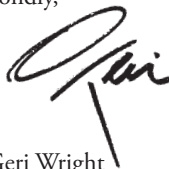
We are passionate.

We are joyful.

We are resilient.

And, we are grateful to have you as part of our family.

Fondly,



Geri Wright
Managing Director

**To know chris peña is to come face to face with a hurricane —
intense, relentless, focused, and deliberate.**

**To know chris peña is to know passion,
humor, generosity, and spirit.**

To know chris peña is to know talent.

His play *how to make an American Son* is fueled by these emotions and a point of view about what it means to be an immigrant in America at this moment in time.

From the first page, where, while setting the scene, we are told, “Everything is in the details,” we are reminded of another play about fathers and sons, where we are instructed, “attention must be paid.” Father (Mando) and son (Orlando) are of different generations, with different goals and expectations; we see this in the initial scene where Mando confronts Orlando over how blasé he is about what they have: money, cars, clothes. The disconnect is not specific to this family, but in the hands of peña, we learn the cost of working one’s way up the ladder.

Mando tells Orlando:

i came here because that life i didn’t want that for you
i couldn’t imagine a child my child growing up the way i did but i look around i look at this
i look at who i am
i look at your mother and what we’ve made what we’ve accomplished

A question that drives the play is whether Orlando understands this, or cares. At the end of the day, he is 16, desperate to find his place, to prove himself, and to figure out what his inheritance — of being his father’s son — means in practice. Despite the status that Mando has achieved, from working as a janitor to owning the company, there are still limitations. There is always someone to keep him in his place, there is always a dream deferred, a wish unfulfilled — even with the money he has earned, there are obstacles. How he reacts is fundamentally different from how Orlando responds, because he has raised him to be. But is that the best way?

Like so many fathers and sons before them, the moments between Mando and Orlando are filled with silences, assumptions, frustrations, and aggravations. From the perspective of the parent, Orlando is an entitled brat who doesn’t appreciate all that has been given him. From the perspective of the child, Mando is an out-of-touch workaholic who demands too much. In the middle is the love between these two, or, at minimum, the way they define love when faced with challenges. Unlike when Mando first arrived in the United States, this time he has Orlando, who has become the American son, to speak truth to power. As Rafael tells him, “You have no idea how lucky you are the way you talk.” What is privilege in one world is a given in another.

how to make an American Son challenges our assumptions of what an immigrant story is. Our expectations about the politics, the rationale, and the behaviors are undercut and reframed much like the points of view of Mando, Orlando, and those in their orbit are when faced with the realities of capitalism and racism. Whatever you think your status is now is just a placeholder. Everything can change in a heartbeat. It’s as predictable as a hurricane.



christopher oscar peña
(Playwright)

is a storyteller originally from California, now splitting his time between New York and LA. In 2019 with Sean Daniels, he co-directed the world premiere of

Daniels' adaptation of Jack Kerouac's "lost novel" *The Haunted Life* at Merrimack Rep. The production marked the first time the Kerouac Estate had ever sanctioned an official theatrical adaptation of Kerouac's work and solidified the artistic partnership between Peña and Daniels. Shortly after, Daniels was appointed Artistic Director of Arizona Theatre Company, where he invited Peña to become an Artistic Associate, as his first hire.

As a playwright, the Clarence Brown Theatre commissioned and produced the world premiere of Peña's play *The Strangers*. In New York, the Flea Theatre produced the world premiere of his play *a cautionary tail*. Most recently, he collaborated with actress Solea Pfeiffer on her solo show *You Are Here*, which was commissioned by Audible and played to sold out acclaim at the Minetta Lane Theatre off-Broadway; it will soon be available on Audible. For the next two years, Profile Theatre in Portland, Oregon, will produce a season of his work: the second production of *how to make an American Son*, the world premiere of his Goodman Theatre-commissioned play *awelstruck*, and the world premiere of a new Profile Theatre commission. His work has been developed by Playwrights Horizons, the Goodman Theater, Public Theater, Two River Theater, INTAR, Ontological

Hysteric Incubator, Playwrights Realm, Rattlestick Playwrights Theater, Old Vic, Orchard Project, Naked Angels, and New York Theatre Workshop, among many others. A two-time Sundance Institute Theater Fellow, he has also held fellowships with the Lark Play Development Center, was a recipient of the Latino Playwrights Award from the Kennedy Center, was an Emerging Artist Fellow at New York Theatre Workshop, was a Playwrights Realm Writing Fellow, and was a part of the US/UK Exchange (Old Vic New Voices). A proud member of New Dramatists, he was named one of "The 1st Annual Future Broadway Power List" by *Backstage* and has been published by Methuen, No Passport Press, and Smith and Krauss. He has an extensive relationship with the 24 Hour Plays, where he has written for their plays on Broadway and Musical Benefits, and written viral monologues for Hugh Dancy, Bonnie Milligan, Cory Michael Smith, John Gallagher Jr., Libby Winters, Evan Jonigkeit, and many more.

In television, he was a writer on the Golden Globe-nominated debut season of the CW show *Jane the Virgin*, the critically acclaimed HBO show *Insecure* (in which he also appeared as the character Gary), as well as the Starz show *Sweetbitter*, *Motherland: Fort Salem* on Freeform, and the ABC / Hulu series *Promised Land*. He produced the BET+ holiday film *A Jenkins Family Christmas* and co-wrote this year's upcoming BET+ holiday film *The Cookoff*. He is currently a Supervising Producer on an upcoming Disney+ show, and developing original series for HBO (with filmmaker Crystal Moselle and artist Derrick B. Harden), and STX (with Omar Sharif Jr.). He received his B.A. from UC Santa Barbara and his M.F.A. from NYU's Tisch School of the Arts.

CAST (ALPHABETICAL ORDER)



Cristela Alonzo (mercedes)

made history in 2014 when she became the first Latina to create, produce, and star in her own network sitcom, *Cristela* for ABC. In 2017, Alonzo made history again when she became the first Latina lead in a Disney Pixar film, for which she

voiced the part of Cruz Ramirez in *Cars 3*. Her first stand-up special *Lower Classy* is currently streaming on Netflix, and her newest special *Middle Classy* will be premiering on the streamer on June 28, 2022. Alonzo's memoir, "Music to My Years," released by Atria Books, an imprint of Simon & Schuster, is available on Amazon.



Alexander Flores (rafael)

is a Puerto Rican actor born and raised in the Bronx, New York. Flores started acting at a young age, studying theater for most of his life. He has performed at The Public Theater with The LAByrinth Theatre Company and The Cherry Lane Theater to critical acclaim.

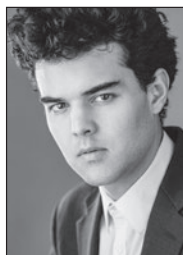
Flores moved his focus from theater to film/TV later in his career and is best known for his work in *The Maze Runner* franchise for 20th Century Fox. Some of his other credits include *The Good Wife*, *Orange is the New Black*, and *The Good Cop*, just to name a few.



Eddie Boroevich (richard)

Is making his ATC debut. Off-Broadway productions include *The American Clock* (HB, dir. Austin Pendleton); *Five By Tenn* (MTC); and a workshop of *Five Very Pretty Girls* (NYTW, dir. Michael Greif). Regionally, Eddie origin-

ated the role of Woodson Bull III in the first staging of Wendy Wasserstein's *Third* (Theater J), and has also performed at Barrington Stage Company, Premiere Stages, Cincinnati Playhouse in the Park, The Repertory Theatre of St. Louis, Shakespeare Theatre Company, and The Kennedy Center. TV/Film credits include *The Equalizer*, *The Marvelous Mrs. Maisel*, *Evil*, *Madam Secretary*, *The Romanoffs*, and *Buzzer* (dir. Anne Kauffman). Eddie is a member of Ensemble Studio Theatre in New York.



Francisco Javier González

(orlando) is thrilled to be making his ATC debut. He won the Broadway World 2019 Award "Best Actor in a Musical" for Matt in *The Fantasticks*, and he wrapped a run in Lauren Gunderson's reimagined *Peter Pan & Wendy* at the Shake-

speare Theatre Co. He was recently cast in 20th Television/Hulu's *Only Murders in the Building* in the role of "Luis" starring opposite Tina Fey. González graduated with a BFA from NYU Tisch School of the Arts. He received the Stagebound Scholarship to study classical voice at the National Opera Center in Chelsea. As a vocalist, González has produced and performed in concerts throughout NYC. His work has been showcased at Radio City Music Hall, Lincoln Center, the National Opera Center, 54 Below, and the Green Room 42. He currently works on stage and in film and television. IG @frankiegonzalezarts

CAST (ALPHABETICAL ORDER)



Gabriel Marin (mando) is excited to make his Arizona Theatre Company debut. Marin has most recently been seen in the National Tour of *What the Constitution Means to Me* and Off-Broadway in *Then They Forgot About The Rest* (INTAR). Marin has appeared regionally with American Conservatory Theater, Center Theater Group, Kansas City Rep, Huntington Theatre Company, Guthrie Theater, Ensemble Theatre Company, McCarter Theatre Center, San Francisco Playhouse, San Jose Rep, Kitchen Theatre Company, Merrimack Rep, TheatreWorks, Marin Theatre Company, Aurora Theatre Company, Magic Theatre, and Center REP, among others. Marin's recent screen credits include

NBC's *Law and Order: SVU* and season three of HBO's *Succession*. gabriel-marin.com



Patrick Weber (sean) is extremely excited to be making his ATC debut in *how to make an American Son*. Weber is from the great city of Chicago, where he was born and raised. He graduated from The University of Illinois Urbana-Champaign with a BFA in acting. He has been seen on television in *Chicago Fire* and *Power Book: Force*. Recently he was an understudy in The Paramount Theater's production of *Sweat*. Big shout out to his agents at Stewart Talent for being the absolute best.

THE CREATIVE TEAM

Kimberly Senior (Director) is making her ATC debut. She directed *Disgraced* on Broadway. Off-Broadway credits include Harvey Fierstein's *Bella Bella* (Manhattan Theatre Club); Aasif Mandvi's *Sakina's Restaurant* (Audible Theatre); *Discord* (Primary Stages); and *Engagements* (Second Stage). Regional theatre credits include *Our Daughters*, *Like Pillars*, *Sweat*, and *The Niceties* (Huntington Theatre Company); *Support Group for Men* and *Rapture*, *Blister*, *Burn* (Goodman Theatre); *Buried Child*, *Hedda Gabler*, *Marjorie Prime*, and others (Writers Theatre); *Byhalia, MS* (Kennedy Center); *Sex with Strangers* (Geffen Playhouse), and many more. TV credits include Chris Gethard's *Career Suicide* (HBO/Judd Apatow). Audio projects include *The Wastelanders: Starlord* (Marvel/Sirius XM); *Ghostwriter* (Cadence 13); Dan Rather's *Stories of a Lifetime*; Margaret Trudeau's *Certain Woman of an Age* (Audible), and many more. Senior is a member of Goodman Theatre's

Artistic Collective and a proud member of SDC. kimberlysenior.net

Glenn Bruner 🌻 (Production Stage Manager) is in his 25th season at ATC, where he has stage managed more than 70 productions including *Miss Bennet: Christmas at Pemberley*, *Silent Sky*, *Outside Mullingar*, *Chapter Two*, and *Five Presidents*. He has worked at Studio Arena Theatre, Dallas Theater Center, Center Stage, Alley Theatre, and Seattle Rep. He was the assistant stage manager for the world premiere of *On The Waterfront* at the Cleveland Play House, and he stage managed the Off-Broadway premiere of Alan Ayckbourn's *Season's Greetings*. Bruner has voiced many radio and television commercials, and he worked on-air for Texas Public Radio in his hometown of San Antonio. For the past 21 summers, Bruner has worked on the entertainment production staff for Major League Baseball's All Star FanFest/Play Ball Park.

THE CREATIVE TEAM

He was the 2012 recipient of the Lucy Jordan Award, presented annually by the Western Region of Actors' Equity Association, and has been a member of AEA since 1981.

Mollie Heil 🌸 (Assistant Stage Manager) is so glad to be back at ATC and working in Arizona! Favorite credits include production stage manager for *American Idiot* and *The Mountaintop*; assistant stage manager for *Kinky Boots* (Weathervane Theatre); production stage manager for *Bright Star* and *Photograph 51*; assistant stage manager for *[title of show]* (Webster University); and production assistant for *The Marvelous Wonderettes* (Repertory Theatre of St. Louis). Heil received her BFA in Stage Management from The Conservatory of Theatre Arts at Webster University and is a proud new AEA member. Much love and thanks to her parents, Mimi, her three younger siblings, and her best friends. mollieheil.com

Andrea Lauer (Scenic Designer) is making her debut at ATC as the set designer for *how to make an American Son*. A longtime collaborator of the playwright christopher oscar peña, she has had the distinct pleasure of working on every production that has been produced of his work to date. Based in New York City, she works on and off Broadway, regionally and internationally. Selected design works include Broadway's *American Idiot* and *Bring It On, the Musical*. Internationally, her most recent work was at The London Philharmonic and Shakespeare's Globe, and she was also the production designer for the *Beatles Sergeant's Pepper's 50th Birthday Extravaganza* for the city of Liverpool. She also works as a fashion designer for her company RISEN DIVISION, is an MIT Media Lab Director's fellow, and is a NEW LAB Artist in Residence.

Rodrigo Muñoz (Costume Designer) is a New York-based costume designer originally from Mexico City. He is thrilled to make his ATC debut. New York Off-Broadway projects include *Notes from*

Now (Prospect Theater Company), *This Space Between Us* (Theatre Row), *Preparedness* (The Bushwick Starr), and *Volpone* and *The Revenger's Tragedy* (Red Bull Theatre). Regional work includes *Red Velvet* (Shakespeare Theatre Company), *The Bluest Eye* (Huntington Theatre), *Fall of the House of Usher* (Boston Lyric Opera), *Bad Dates* (Portland Stage), *Water by the Spoonful* (Fordham Theatre), *Impulso* (The Movement Theatre Company), and *jazz singer* (Abrons Arts Center). rodrigomunozdesign.com

Reza Behjat (Lighting Designer) has worked Off-Broadway in *Will You Come With Me* (PlayCo), *Wish You Were Here* (Playwrights Horizons), *Vagrant Trilogy* (The Public), *English* (Atlantic), *Out of Time* (The Public/NAATCO), *P.S. (Ars Nova)*, *Disclaimer* (UTR), *Henry VI* (NAATCO), and *Hamlet* (Waterwell). Regional and other companies with which Behjat has worked include the Hudson Valley Shakespeare Festival, Guthrie Theater, PlayMakers Rep, Actors Theater of Louisville, Baltimore Center Stage, Geva Theatre, Alabama Shakespeare, Long Wharf Theater, Target Margin, New Georges, and more. Behjat received the Knight of Illumination Award for *Nina Simone: Four Women* (2019). rezabehjat.com

Crickett S. Myers (Sound Designer) earned a Tony Nomination and a Drama Desk Award for her design of Broadway's *Bengal Tiger at the Baghdad Zoo*. Off-Broadway, her designs include *The Marvelous Wonderettes*. She has also designed regionally at La Jolla Playhouse, The Geffen Playhouse, The Ahmanson, The Mark Taper Forum, Kansas City Rep, Shakespeare Theatre Company of DC, South Coast Rep, The Kirk Douglas Theater, Pasadena Playhouse, Berkeley Rep, and St Louis Rep. Other selected L.A. Theaters include The Wallis Annenberg Center for Performing Arts, East West Players, Ghost Road Theater Company, and The Celebration Theater. She has earned 24 Ovation Nominations, as well as winning The Ruth Morley Award from the League of Profes-

THE CREATIVE TEAM

sional Theater Women, The Kinetic Award for Outstanding Achievements in Theatrical Design, an LADCC, and a Garland Award. Myers is a proud member of Local USA 829 and the TSDCA. cricketsmyers.com

Alex J. Gould (Intimacy Director) is an actor/fight and intimacy director in New York City. He was fight director for *Georgia Mertching is Dead*, *Dido of Idaho*, and *The Fall - Marathon Plays* (Ensemble Studio Theater); *The Antelope Party* (Dutch Kills/Wild Project); *Julius Caesar* (CSC/Columbia MFA); *Agnes* (Lesser America); *The Nibbler* (Rattlestick Theater); *The Place We Built* (The Flea Theater); *The Terrifying* (Abrons Art Center); *The Comedy of Manors* (Adirondack Theater Festival); *Horse Girls* (The Cell); and *Happily After Ever* (59E59). Gould has also choreographed for The New School, Atlantic Theater Conservatory, Fordham/Primary Stages, Partial Comfort, St. Peter's University, and Pulse Ensemble Theater. Regional theatre includes the Williamstown Theater Festival. He is an Artist Member of Ensemble Studio Theater and attended AMDA.

Alaine Alldaffer, CSA (Casting Director) is the Casting Director for Playwrights Horizons. She and Lisa Donadio cast *A Strange Loop* (currently on Broadway), *Grey Gardens* (also for Broadway), *Clybourne Park* (also on Broadway), and *Circle Mirror Transformation* (Drama Desk and Obie Awards for Outstanding Ensemble, Artios Award for casting) and *The Flick* (Barrow Street Theatre). Regional theatre credits include Huntington Theatre Company, Hartford Theater Company, The Old Globe, San Diego, Williamstown Theatre

Festival, Seattle Repertory Theatre, Berkeley Repertory Theatre, and People's Light, among others.

Micha Espinosa 🎭 (Voice/Dialect Coach) previously worked with Arizona Theatre Company for *Man of La Mancha*. Other credits include Dallas Theatre Center: *Our Town (Bilingual)*; Oregon Shakespeare Festival: *Peter and the Starcatcher*, *The Copper Children*, *Hairspray*, *Mother Road*, and *La Comedia of Errors*; Children Theatre Company: *Spamtown*; Milwaukee Repertory: *Four Hands-Two Pianos*, *West Side Story*, and *In the Heights*; Southwest Shakespeare: *Henry IV, Part One*, *Romeo and Juliet*, *Hamlet*, *Much Ado about Nothing*, *Or, A Play about Alpha Behn*, *Hysteria*, *The Merry Wives of Windsor*, *Macbeth*, *The Taming of the Shrew*, *She Stoops to Conquer*, *Blithe Spirit*, *The Tempest*, *The Importance of Being Earnest*, and *Julius Caesar*; Theatre Artist Studio: *Mysterious Disappearance*; Phoenix Theatre: *Enferma*, *Bakersville*, *The 39 Steps*, *Boeing Boeing*, *Nine*, *The Light in the Piazza*, and *Curtains*; Stray Cat Theatre: *The Last Days of Judas Iscariot*; Mixed Blood: *On the Spectrum*; The Old Globe: *Somewhere*; Mo'olelo Performing Arts Company: *26 Miles*; Teatro Luna: *The North/South Plays*; Miami Light Project: *Fat Boy*; Kalamazoo Civic Theatre: *Hollywood Arms*, *Shakespeare in Hollywood*, *The Merry Wives of Windsor*, *Duck Hunter Shoots Angel*, *Medea*, and *Noises Off*; Arizona Jewish Theatre Company: *Brooklyn Boy*; Whole Art Theatre: *The Goat, or Who is Sylvia*; Ellis Island Miller Auditorium: *Ellis Island*. Espinosa is a director, activist and professor at Arizona State University.

christopher oscar Peña (Playwright) see *About the Author* on page 8.

EXECUTIVE LEADERSHIP



Sean Daniels 🌟 is honored to be The Kasser Family Artistic Director at ATC, where he first fell in love with theatre.

An internationally known theater director, writer, and Artistic Director, Daniels is known for new work and innovative community-engaged leadership. He's been a *New York Times* Critic's Pick as a director and a writer.

Daniels has directed at ATC (*Women in Jeopardy!*, *Miss Bennet: Christmas at Pemberley*, *My 80-Year-Old Boyfriend*), at Manhattan Theatre Club (*The Lion*, Drama Desk Award & Theatre World Award, nominated for Lucille Lortel and Outer Critics Circle), 59e59 (NYC, *I and You*, nominated for Outer Critics Circle), the Lynn Redgrave (NYC), The Kennedy Center (Washington, D.C.), the St. James (West End, London - *The Lion*, winner of Best New Musical), and at many wonderful regionals (Old Globe, ACT, Geffen, Cleveland Playhouse, Milwaukee Rep, Long Wharf, Alliance, and the Neo-Futurists in Chicago!).

In addition, Daniels has been an Artistic Director at Merrimack Repertory and Dad's Garage (which he co-founded), and an Associate Artistic Director at California Shakespeare Theatre and Actors Theatre of Louisville.

Daniels has been named "one of the top fifteen up & coming artists in the U.S., whose work will be transforming America's stages for decades to come" & "One Of 7 People Reshaping And Revitalizing The American Musical" by *American Theatre* magazine.

As a playwright, his work has been produced in multiple theaters throughout the country including a commercial Off-Broadway run of his sober dark comedy *The White Chip*, which was produced by Tony Award winner Tom Kirdahy. It is currently being adapted for a book and for TV.

He'd love to hear from you.

sdaniels@atc.org

twitter: @seandaniels



Geri Wright 🌟 returned to ATC in January 2020 as ATC Managing Director. Her love of theatre started at Radio City Music Hall in New York City on a school field trip and has grown into a passion for the arts today. Having served

in leadership roles at the Heard Museum, American Red Cross, Arizona Theatre Company, and most recently as CEO of Act One, Wright has been a passionate advocate for the importance that the arts play in creating healthy and prosperous communities.

With more than 25 years in nonprofit management and fundraising experience, she is thrilled to be able to put those skills to use in serving our state theatre. In 2019, Wright was recognized as one of the Outstanding Women in Business by the *Phoenix Business Journal* and has been honored with an assortment of acknowledgments for her work in the charitable community. Wright and her family, along with two horses and an Australian cattle dog, reside at the base of the McDowell Mountains.

Our work is made possible due to the generosity of many corporations, foundations, and government supporters. Through these partnerships, we can maintain a standard of artistic excellence while providing greater access to all.

List reflects donations made July 1, 2019 to May 31, 2022

2021/2022 SEASON SPONSORS: **I. MICHAEL AND BETH KASSER**

SPOTLIGHT CIRCLE

\$25,000+

Arizona Commission on the Arts
Arts Foundation for Tucson
and Southern Arizona
APS
Gammage & Burnham
The Herberger Foundation
The Connie Hillman Family
Foundation
LAVIDGE
Lewis Roca
The David C. and Lura M.
Lovell Foundation
The Margaret E. Mooney Foundation
Phoenix Office of Arts and Culture
Virginia G. Piper Charitable Trust
SRP
The Stonewall Foundation
The Shubert Foundation
U.S. Small Business Administration

ARTISTIC DIRECTOR'S CIRCLE

\$10,000 - \$24,999

Ameriprise Financial
The Sheri and Les Biller
Family Foundation
Burns and McDonnell
Engineering Company, Inc.
Cox Charities at Arizona
Community Foundation
Flinn Foundation
The H.S. Lopez Family Foundation

National Endowment for the Arts
Network for Good
Scottsdale Fashion Square
The Stocker Foundation
John M. Simpson Foundation
Southwest Gas Corporation
UnitedHealthcare

PRODUCER'S CIRCLE

\$5,000 to \$9,999

The Blackburn Giving Fund
Community Foundation for
Southern Arizona
Diamond Family Philanthropies
The Downtown Clifton
Hotel Tucson
Margaret T. Morris Foundation
The John and Helen
Murphey Foundation
Tito's Handmade Vodka
Union Pacific Foundation

DIRECTOR'S CIRCLE

\$3,000 to \$4,999

Arizona Daily Star
Arizona Public Media
Lightwave Technical Consulting
PICOR Charitable Foundation
Tucson Realtors Charitable
Foundation

OPENING NIGHT CIRCLE

\$2,500 to \$2,999

Anonymous
Applied Materials Foundation
The Benevity Community
Impact Fund
Jim Click Automotive Team
Long Realty Cares Foundation
Nova Home Loans
Resolution Copper
Tucson Desert Song Festival

DESIGNER'S CIRCLE

\$2,000 to \$2,499

City of Tempe Arts and Culture
Cushman & Wakefield | PICOR
Commercial Real Estate Services
The Benevity Community
Impact Fund
Downtown Development
Corporation of Tucson
Leonard J. and Irene Brown
Foundation, Inc.
Withoft Apprill Family Foundation

INSIDER

\$1,000 - \$1,999

American Express Employee Giving
Friedel Family Foundation
Donald Pitt Family Foundation
Raymond James and Associates
Snell & Wilmer L.L.P.
Southern Arizona Anesthesia
Tucson Iron and Metal

PATRON

\$500 - \$999

Jacob Abramson Foundation
Acorn Associates Architecture, Ltd.
Bank of America Charitable
Foundation
Blue Cross Blue Shield of Arizona
Dark Horse Media
The Gertrude and Charles
Gordon Foundation
The Learning Curve
Morgan Stanley
Sand Reckoner
TIAA-CREF
Texas Instruments Foundation
Valley of the Sun United Way
Vanguard Charitable

FRIEND

\$250 - \$499

The 24 Hour Company
Actors' Equity Foundation
Baird Foundation
Boeing Matching Gift Program
Farmers Home Fire Insurance Co.
The Haddock Stanton Foundation
HSSM - C12 Greater Phoenix
IBM Matching Grants Program
Johnson & Johnson Matching
Gifts Program
UBS Wealth Management

Ken and Kelley Abrahams Charitable
Fund at The American Gift Fund

Audrey and Dan Abrams Charitable
Fund at Schwab Charitable

Dan and Nancy Alcombright
Fund at Schwab Charitable

Anonymous Funds at Community
Foundation for Southern Arizona

Mary and Cameron Artique Charitable
Fund at Schwab Charitable

Daniel Asia Donor Advised Fund
at Renaissance Charitable

BABAM Fund at Vanguard Charitable

Gail and Michael Baer Donor Advised
Fund of the Jewish Community
Foundation of Greater Phoenix

BD2 Donor Advised Fund at
the Community Foundation
for Southern Arizona

Berg Charitable Gift Donor Advised
Fund at Fidelity Charitable

Jeffrey F Berg and Debra H Paget Fund
of the Cornell University Foundation

Betsy Bolding Fund at the Community
Foundation for Southern Arizona

John and Susan Bowers Charitable
Gift Fund at Schwab

David and Janet Brown Donor Advised
Fund at Schwab Charitable

Carhuff Donor Advised Fund
at Schwab Charitable

Francis Chapin Foundation
Philanthropic Fund of United Way
of Tucson and Southern Arizona

Charitable Contributions for Improving
Quality of Life Donor Advised
Fund at Fidelity Charitable

Amy Charles and Steven McMillan
Donor Advised Fund of the
Jewish Community Foundation
of Southern Arizona

Joe Coyle Philanthropic Fund at United
Way of Tucson and Southern Arizona

Cullen Family Charitable Fund
at Vanguard Charitable

Samuel Denmark Family Fund
at Fidelity Charitable

Dennis and Marla Daugherty
Charitable Fund at
Schwab Charitable

Bill and Donna Dehn Charitable Fund
of the Ayco Charitable Foundation

Diamond Family Philanthropic
Fund of the Jewish Community
Foundation of Southern Arizona

Dorset Charitable Fund at
Schwab Charitable

Adrienne Drell and Frank Nitikman
Fund at National Philanthropic Trust

Chris and Carol Dubrowski Charitable
Fund at Schwab Charitable

Seth and Rosalind Eisner Fund
at the Jewish Federation of
Metropolitan Chicago

Engels-Medland Fund at
Fidelity Charitable

Helen Fanucci Charitable Fund
at Fidelity Charitable

Fischman Memorial Endowment
Fund of the Jewish Community
Foundation of Southern Arizona

Melissa Fitzgerald Donor Advised
Fund at Schwab Charitable

Flatt Family Fund at Arizona
Community Foundation

Joanie Flatt Family Foundation at
Arizona Community Foundation

Michael Flatt Charitable Fund at
Arizona Community Foundation

Fridley Family Charity Fund at
Vanguard Charitable

Jane Gellman Donor Advised Fund at
the Jewish Community Foundation
of Milwaukee Jewish Federation

Edward and Lauralyn Gesten Family
Foundation at Morgan Stanley GIFT

Gissing GABE Group Fund at
Vanguard Charitable

Robert and Laurie Kaye Glaser
Donor Advised Fund at The
Jewish Community Foundation
of Southern Arizona

Thomas Godfrey Charitable Fund
at Fidelity Charitable

Debbie Goodman and Patrick
Butler Donor Advised Fund
at Schwab Charitable

Good/McCaslin Giving Fund
at Fidelity Charitable

Gordon Family Fund at
Fidelity Charitable

Loring and Susan Green Charitable
Trust at Fidelity Charitable

Greenleaf/Molberg Family Fund
at Schwab Charitable

Guilfooy Family Fund at
Schwab Charitable

Phil and Anne-Marie Hall Donation
Account at Schwab Charitable

Anne and David Hameroff Donor
Advised Fund at Jewish Community
Foundation of Southern Arizona

Harris and Lebel Donor Advised
Fund at Schwab Charitable

Jim and Monica Hart Donor Advised
Fund at Schwab Charitable

Hazan Family Donor Advised
fund at Jewish Community
Foundation of Southern Arizona

Margaret M. Hitchcock Fund at The
New York Community Trust

Holsclaw Advisory Endowment
Fund at Community Foundation
of Southern Arizona

WL Houtkooper Charitable Fund
at Schwab Charitable

Bob Howard and Patty Burger Donor
Advised Fund at Fidelity Charitable

Ide Family Charitable Trust
at Fidelity Charitable

Ralph A. and Anna Laura
Jackson Charitable Fund
at Fidelity Charitable

Jada's Gift at UBS Donor Advised Fund

S and J Jankowski Giving Fund
at Fidelity Charitable

Mack Jones Donor Advised Fund
at Schwab Charitable

Michael and Robin Kaiserman
Philanthropic Fund of the
Jewish Community Foundation
of Southern Arizona

Karcis and Seward Giving Fund
at Fidelity Charitable

Carolyn Kinney Donor Advised
Fund at Schwab Charitable

Carol and Foster Kivel Family Fund
at the Community Foundation
for Southern Arizona

Alvin and Janice Kivel Philanthropic
Fund of the Jewish Community
Foundation of Southern Arizona

Norm and Teri Klein Donor Advised
Fund at Schwab Charitable

Kwoh Family Charitable Fund
at Vanguard Charitable

E. Kay Landon Charitable Fund
at U.S. Charitable Gift Trust

Sally Lanyon Donor Advised Fund
at the Jewish Community
Foundation of Southern Arizona

Robert B. Leff and Janice M. Leff Fund
at Arizona Community Foundation

Bertie and Jack Levkowitz Donor
Advised Fund at Jewish Community
Foundation of Southern Arizona

Jackie McElroy-Edwards Charitable
Fund at Vanguard Charitable

Gretchen and James McGill Family
Giving Fund at Fidelity Charitable

Annis Miller Donor Advised
Fund at Schwab Charitable

George and Eleanor Mink Family
Fund at Schwab Charitable

Gerry and Peggy Murphy Gift
Fund at Fidelity Charitable

Patrick J. O'Leary Foundation
at Fidelity Charitable

John and Libby Oswalt Memorial
Fund at Vanguard Charitable

Denise Pappas Fund at
Fidelity Charitable

James E. and Sandra S. Peebles
Family Fund at Community
Foundation for Southern Arizona

Shelley E. Phipps Charitable Donation
Trust at Fidelity Charitable

Pozarnsky/Riley Charitable
Fund at Fidelity

Barbara L. Provus Charitable
Fund at Schwab Charitable

Rein Family Fund at Schwab Charitable

Reynolds Family Fund for Charitable
Giving at Fidelity Charitable

Riegger Charitable Fund at
National Philanthropic Trust

Roehrick Family Fund at
Fidelity Charitable

Rotkis Charitable Fund at
Schwab Charitable

Dr. Herschel and Jill Rosenzweig Donor
Advised Fund at Jewish Community
Foundation of Southern Arizona

RW/JM Charitable Trust at
Fidelity Charitable

Schorr Family Donor Advised
Fund at Jewish Community
Foundation of Southern Arizona

Brian and Lisa Scott Donor Advised
Fund at Fidelity Charitable

Morton and Arlene Scult Designated Fund of the Jewish Community Foundation of Greater Phoenix

Lex and Carol Sears Donor Advised Fund of the Jewish Community Foundation

Lex and Carol Sears Philanthropic Fund at United Way of Tucson and Southern Arizona

Seiden Family Foundation at Arizona Community Foundation

Sol and Susan Shatz Charitable Gift Account at Morgan Stanley

Son-Divito and Divito Charitable Fund

Shirley Family Charitable Fund at Fidelity Charitable

Daniel J. and Evelyn G. Simon Donor Advised Fund of the Jewish Community Foundation of Greater Phoenix

Sarah B Smallhouse Advised Fund at the Community Foundation for Southern Arizona

Sara and Larry Soller Charitable Giving at Fidelity Charitable

Adam F. and Celia Staperfene Charitable Fund at Schwab Charitable

Dinah Stecki Donor Advised Fund at Schwab Charitable

Jerry and Gerry Tamm Donor Advised Fund at Fidelity Charitable

Tancer Family Fund at Arizona Community Foundation

Tyler and Marcia Tingley Donor Advised Fund at Fidelity Charitable

Topaz Fund at the Community Foundation for Southern Arizona

Jerry and Joan Vandevoort Donor Advised Fund at Schwab Charitable

Frederick W. Wackerle Charitable Fund at Schwab Charitable

Elliott and Wendy Weiss Charitable Gift Fund at Schwab Charitable

James D. Wezelman Donor Advised Fund at the Jewish Community Foundation of Southern Arizona

Janice Wezelman and David Bartlett Donor Advised Fund of the Jewish Community Foundation of Southern Arizona

Bert Whitehead Charitable Gift Fund at Schwab Charitable

Rob and Jody Wilson Charitable Fund at Vanguard Charitable

Zimmermann Family Fund

ATC EDUCATIONAL PROGRAMS INSPIRE CREATIVITY ACROSS THE STATE

ATC delivers inspiring experiences in a number of ways, both connected to our stage and beyond our walls, in schools, and across the state.

PROGRAMS INCLUDE:

ATCteen

ATCteen is a program designed with the student in mind. We are actors, directors, writers, designers, improvisers, and theatregoers. ATCteen brings together a diverse group of teens ages 13-18 from the Tucson area. We write, direct, and perform in our own productions, see plays from local theatre companies, explore different ATC departments through interactive workshops, and get behind-the-scenes looks at what happens at Arizona Theatre Company through workshops and interactions with professional artists.

DAVID IRA GOLDSTEIN ARTIST-IN-RESIDENCE PROGRAM

Residency programs are 10-week intensive in-school workshops available to middle and high school drama departments. Students and teachers learn from professional teaching artists in a content area of their choice. These specialized and unique experiences allow students to deepen their learning and sharpen their skills in theatre arts. Residency topics include acting techniques, improv, stage combat, Shakespeare, devised theatre, and more.



STUDENT MATINEE SERIES

Student Matinees allow ATC to share the live theatre experience at low or no cost to young people. (For elementary, middle school, high school, and college groups).

SUMMER ON STAGE

Summer On Stage is a dual track, seven-week intensive theatre training program for high school theatre students.

Performance Track: Students will develop performance skills and experience a professional rehearsal process with Summer on Stage. ATC staff and teaching artists support an extraordinary summer learning experience, leading participants through a variety of acting, voice and movement classes, and rehearsals leading to a fully produced performance at the historic Temple of Music and Art, Downtown Tucson.

Technical Theatre Track: Participants will develop a technical theatre portfolio and learn from ATC's team of professional designers and technicians. Students will learn sound, lighting, costume, and scenic design, as well as experience the process of mounting and running a fully realized production.

ARIZONA THEATRE COMPANY SUMMER ON STAGE TWENTY TWENTY-TWO



Chanel Bragg

In each show guide, Associate Artistic Director Chanel Bragg highlights a member of the cast or creative team who exemplifies excellence within their field. In this issue, she talked to not one, but two, members of ATC's Summer on Stage (SOS) production team who are not only students at the University of Arizona but are local to Arizona! Summer On Stage Lighting Designer Alex Alegria is a UA senior, and Marina Luz Mendivil is a UA junior and is SOS Stage Manager.



Alex Alegria, SOS Lighting Designer



Marina Luz Mendivil, Stage management

Q: When did you realize that you wanted to work in technical theatre?

Alex: When I was in high school, I originally wanted to work in music. We had a club called stage crew, and we set up all the lights and sound for presentations and debates, etc. We learned lighting and sound, but lighting caught my attention the most.

Marina: I started off with an interest in journalism, focusing on cultural reviews of poetry and local events. I also love photography. I was first introduced to theatre, however, in high school. I went on stage and quickly realized I was more comfortable as a technician. I began my journey into stage management and have been doing it for seven years. I was always interested in helping “behind the scenes” and the importance of giving others a platform to explore their stories.

Q: What skills do you think one needs to possess to be a good stage manager?

Marina: First and foremost, communication! You need to be able to talk to your cast and crew to uphold the director’s vision and advocate for members of your company. Stage management creates a hub of communication for the cast, run crew, and creative team. Compassion is also important to be an effective stage manager. You must understand that we are all humans with different backgrounds and intersectional identities. It is important for stage managers to create a space for collaboration peacefully and create a sense of family and camaraderie.

Q: What skills do you think one needs to possess to be a good lighting designer?

Alex: It’s good to communicate and collaborate with the other artists, and to work with the visual departments. It’s important to know how to work around other departments, how

an actor processes, and how to work around situations that may pop up. Without communication, you wouldn’t want to get to tech and have an actor in a green dress on a green set under green lights.

Marina: Time management is an important skill. You want to respect everyone’s time, and I think that’s where a certain level of fluidity comes in, because you need to not only be flexible with ideas, but flexible with any issues that may arise whilst troubleshooting on your feet. You never know when somebody will have a snag in their dress, or a light may burn out. You’ve got to be able to troubleshoot on the spot! Every department provides crucial elements that make up the collective.

Q: Concerning advocacy ... how is a production supported by your position to ensure a director’s ideas are executed?

Marina: I feel it’s my job to protect a director’s conceptual ideas as well as the cast’s safety throughout the process. It is my job to ensure the timeline and deadlines are met. I also believe in creating an environment free of conflict. So, I work to ensure everybody has space, resources, and equipment that they need to set up the space to best serve the production. With your actors, you want to make sure they are comfortable physically, emotionally, and spirituality due to the vulnerability of the work. Since actors are constantly on display, this is an area I like to focus on.

Q: Alex, what was it like for you full circle as a former SOS participant and now lighting designer and facilitator?

Alex: I’m really looking forward to this summer! I enjoyed the program. I participated in SOS for two years. The first year, I was a spotlight operator for both shows. I also got to work closely with the lighting team and learned their process. The second year, I

learned how to program and work the board! I think the experience was valuable because it was so hands on. I think it's important to provide an access point within our community to create next-generation designers and technicians. So, I'm really looking forward to being able to be part of this program again because I really had a good experience.

Q: Marina, why are you excited to work on SOS this year?

Marina: This is my first major opportunity with ATC after shadowing Director Melissa Crespo and taking notes for the most recent production, *Justice*. I'm eager to be a part of the SOS program. I think it's extremely important that we have programs for our youth! I come from a low-income minority community, and basically the arts saved me from the stereotypes that exist surrounding marginalized communities. It's critical to provide this opportunity to students who come from different backgrounds. I've always thought that you need to be the representation you want to see. Far too often, especially in media, we've had a sort of preconceived ideal of who should be allowed access. I love being able to teach the kids and get in there with them. I'm a very hands-on stage manager.

Q: As people of color, how important is it to see yourself in this position, where there are not a lot of marginalized technicians in the field?

Alex: Growing up, I just didn't know if this was an option for me, and I feel like that's what happens a lot within our community. I think it's important to bring the arts to our communities, especially those who don't have easy access because of finances or location. All voices are important, and it's important that educational programs exist to help.

Q: If you were a pro wrestler, what would be your wrestling theme song?

Marina: "My House" by Flo Rider

Alex: "Within" by Daft Punk

Q: If you could only eat one thing for the rest of your life, what would it be?

Alex/Marina [in unison]: PASTA

Q: What is a destination you always wanted to travel to?

Marina: Jamaica or anywhere in the Caribbean

Alex: France

Q: What are you currently reading or bingeing on Netflix?

Marina: *The Witcher!!!*

Alex: *Cowboy Be-bop*

Q: What is a goal you have for Summer on Stage?

Alex: To learn something new through collaboration!

Marina: I hope to network with other local professionals and reach as many students as I can. I want to make an impact.

To learn more about our Education Department
visit atc.org/atceducation
email education@atc.org
or call **520-463-7675**

Our work is made possible due to the generosity of many individual supporters.
With the gifts from the following donors, we can maintain a standard
of excellence while providing access to all.

List reflects donations made July 1, 2019 – May 31, 2022

SPOTLIGHT CIRCLE

\$25,000+

Anonymous (2)
Paul and Alice Baker
Laura and Michael
DiChristofano
Shirley Estes
Deanna Evenchik-Brav
and Garry Brav
Michael O. Flatt
Rob and Laurie Glaser
Ann Goldberg
Anne and Douglas Holsclaw
I. Michael and Beth Kasser
Elsa and Jack McAvish
Dolly and Jim Moran
Kay and Walter Oliver
Susan and Jeffrey Rein
Richard Stahl
Virginia Weise

ARTISTIC DIRECTOR'S CIRCLE

\$10,000 - \$24,999

Anonymous
Char and Alan Augenstein
Christine and John
Augustine
Mary Jan and Paul Bancroft
Mr. A. Frederick Banfield and
Ms. Eileen M. Fitzmaurice
Denice Blake and
John Blackwell
Gloria and Phil Cowen
Patricia Engels and
Dick Medland
Joanie Flatt
Barb and Ted Frohling
Dr. Mary Jo Ghory
Jay Glaser
Edna Gray
Jeff Guldner and
Sydney Reed
Courtney Johnson
Juliana Kasper
Bill Lewis and Rick
Underwood
Sandra Maxfield
Jack and Becky Moseley

Patrick J. O'Leary and
Karen Yamasaki
Mary and Matthew Palenica
Mary Beth and Gerald Radke
Jill and Herschel Rosenzweig
Enid and Michael Seiden
Janie Shapiro and
Slobodan Popovic
Jean and Fred Shaulis
Joanne Sibley
Elizabeth B Smith
Nancy Swanson
Emily and Bob Vincent
Michael Willoughby

PRODUCER'S CIRCLE

\$5,000 to \$9,999

Anonymous
Ron Antinori
Lyn Ashton and Herbert
Stevenson
Kelly Barr
Susan Call
Judie Cosentino
Bill and Donna Dehn
Bruce L. and Lynne
Wood Dusenberry
Linda Fulgenzi
Gail and Patric Giclas
Bruce and Edythe Gissing
Davie Glaser
Ellyn and Jeff Gold
Paulette and Joe Gootter
Nora Hannah and
David Duntelman
Stephen and Amanda Heitz
Jacqueline Hufford-Jensen
and Gregory Kroening
Bob and JoAnne Hungate
Gary Jackson and
Oscar De La Salas
Rebecca and Albert Johnson
Teri and Norman Klein
Lori Mackstaller
Elyce and Mark Metzner
Marcia and Andrew Meyer
Adam James Michael
Rosanna Miller
Caroline and Peter Morse
Peggy and Gerry Murphy
Karen Peters and
Chris Thomas

Carol and Lex Sears
Trisa and Andrew Schorr
Joan and Robbie Sherwood
Steve and Shelly Silverman
Jacqueline Smith
Carolyn and John Stuart
Erica and Ross Stutman
Stephen and Susan
Thompson
Barbara Vogen
Nancy and Jeff Wener
Linda Wurzelbacher
Ruth Zales

DIRECTOR'S CIRCLE

\$3,000 to \$4,999

Anonymous (2)
Kelley and Ken Abrahams
Annaleigh Ashford
Barbara and Franklin
Bennett
Connie and Rodney Boorse
Susan and Brian Boylan
Amy Charles and
Steve McMillan
Elizabeth Cherry
Ginny L. Clements
Arlene and Ed Cohen
Judy and Dave Crone
Alicia and Jon Crompton
Pamela and Thomas Frame
Louise and Jim Glasser
Ellen and David Goldstein
Lori Hamilton
Sandy and Ed Holland
Helen and Robert Jennette
Mack Jones
Steven and Marta Ketchel
Patricia and Mark Landay
Sally and Richard Lehmann
Trudi and Robert Murch
Michelle and Michael
O'Connor
Drs. Cindy Rankin and
Thomas Elliott
Mallory and Donald Riegger
Tom and Eileen Rotkis
Billy Russo and
Richard Giuliani
Michael and Enriqueta Salvo
Patricia and Ron Schwabe
Shoshana Tancer

Ronald and Diane Weintraub
Taryn and Mark
Westergaard
James Wezelman and
Denise Grusin
Gary Wolff and Sandy Gibson

OPENING NIGHT CIRCLE

\$2,500 to \$2,999

Anonymous
Mary and Cameron Artigue
Sandra Capin-Kauffman
and Richard Kauffman
Jacklyn Connoy and
William Maguire
Bruce Covill and
Lucia Renshaw
Sean, Veronica, and
Vivien Daniels
Leslie Dashew and
Jack Salisbury
Jonae and Don DeLong
Marjorie and Gerald Dixon
Norma and Stanley
G. Feldman
Diane Fitzpatrick and
Roger Karber
Catherine "Rusty" Foley
Kathy Garrett
Becky and Dave Gaspar
Anne and David Hameroff
Lee and Arthur Herbst
Ida and John Hester
Cathy and David G. Hutchens
Diane and Patrick Jack
Leslie Hall and Ted Jarvi
Sandra Freeman and
Gary Javitch
Carol and Bob Jennens
Carol and Foster Kivel
Mary and Paul Koss
Ann Lovell
Robert Mulgrew and
Elizabeth Miller
Nina and Brian Munson
Elizabeth Murfee-DeConcini
and Dino J. DeConcini
Jean and Jordan Nerenberg
Sandy and James Peebles
Ken and Judy Ryan
Rita and Steven Schlosser

Marc and Tracy Schwimmer
Ingeborg and Ralph
Silberschlag
Alla and Howard Steinberg
Tom Warne
Bert Whitehead
Allan and Diana Winston

DESIGNERS CIRCLE

\$2,000 - \$2,499

Anonymous (2)
Corbett and Patricia Alley
Rosalie and Al Baumrucker
JoAnn and Dave Becker
Susan Berg
Paula and Edwin Biggers
Betsy Bolding
Sandy and Chuck Bonstelle
Dr. and Mrs. William
H. Dantzier
Julie and Mark Deatherage
Jane and Ernest Del Rio
Mary Ann and Darryl Dobras
Sarah Edwards and
William Arrigo
Jackie and Tom Edwards
Ellis F. Friedman and
Irene Stern Friedman
Lauren and Michael Gordon
Dr. Robert W. Gore
Suzanne "Zippy" Gross
Soozie Hazan and
Michael Burns
Sandra and Elliott Heiman
Ann McLaren Helstad
Liz Hernandez
JP Jones
Nathan Joseph
Kay Juhan
Phillip Keller
Jane Langenfeld and
Duncan Chang
Gloria and Jim Lawrence
Judy and Sam Linhart
Nancy and Steven Lynn
Phil and Nora Mazur
Bruce Meyerson and
Mary Simonson
Annis Miller
Drs. Richard and
Yvonne Morris
Keith Murfee-DeConcini

DESIGNERS CIRCLE

(CONTINUED)

\$2,000 - \$2,499

Marianne and Paul
Pellegrino
Jennifer and Charles Putney
Sandra Rausch
Brenda and Jim Rowland
Cita Scott and Harry George
Patricia and Robert
Strickland
Col. Mary Pat Sullivan
Jon Sutton
Sean Sweat and
Chelsea Smith
Lois and Maurice Tattelman
Gail and Hans Thiele
Richard and Madeleine
Wachter
Mary and Bill Way
Ellen Wheeler and David Nix
Janet and Barry Winkler

INSIDER

\$1,000 - \$1,999

Anonymous (5)
Judy Ackerman and
Richard Epstein
Larry and Florence Adamson
Fran and Jim Allen
John Arbuckle, Jr.
Carolee and Daniel Asia
Eva Bacal
Lani and Josh Baker
Suzanne and Kurt Bassett
Rosalie and Al Baumrucker
Nancy and Dave Baxter
Barbara and Mathis Becker
Tony and Maria Beram
Barbara Bickel
Kim and Don Bourn
Diane and Donald Bristow
Suzanne and Don Brown
Carol and Edward Burke
Dora and Barry Bursey
Debbie Goodman-Butler
and Patrick Butler
Geraldine Cass
Shirley Chann
Liana Chase
Al and Sharyn Chessner
Kathleen Church
Elaine and Sidney Cohen
Martin Comey
Jan Copeland
Troy Corbridge
Patricia Coyne-Johnson
and John A Johnson
Andrea and Harry Crane

Shawne Cryderman
Barbara and John Cummings
Marjorie and George
Cunningham
Jane and Ernest Del Rio
Marcia and David Davenport
Erika and Russell Dickey
Anna Don
Tricia and Colin Don
Anne Dougherty
Adrienne C. Dreil
Chris and Carol Dubrowski
Anne and John Duffy
Martha Durkin
Katie Dusenberry
Iris Feldman
Margaret and Dennis
Fesemyer
Louise and John
Francesconi
Judith Gans
Margot W. and J.D. Garcia
Stephanie and Mo Garfinkle
Bruce Gillaspie
Amy Gittler and
Michael Silyman
Angela and Jeffrey Glosser
Cathleen and Thomas
Godfrey
Michael Godnick
Frank Goodyear
Cande and Thomas Grogan
Sara and Andrew Gyorke
Janet and Richard Hardy
Robin and John Harris
Bonnie and Michael Harris
Monica and Jim Hart
Pam and Stan Hart
Suzanne and Lester Hayt
Julie and Larry Hecker
Sharon and Louis Hekman
Pat and Fred Henning
Tom and Sandy Hicks
Peggy Hitchcock
Darlinn and Sidney
Hollander
Troy Hollar
Paul Hooker
John Hudak
Susan and James Hunnewell
Jim and Linda Huprich
Caroline Jank
Laurie and Chuck Jarrett
Bob and Susan Johnstone
Bill Jones and Alan Storm
Leianne Jones
Patrick Jones and
Miko Sularso
Denise Ford Judson and
George Judson
Violet Kasser

Mary Keane and
Jim McCorry
Robert Kaul
Jamie and Bill Kelley
Janice and Alvin Kivel
Gabrielle and Danny Klein
Drs. George and
Maria Knecht
Ronald and Ruth Kolker
Robyn Lambert
Margaret and George Larsen
Debra and James Larson
Dawn and John Lashley
Joan Le Fevre
Janice and Robert Leff
Christiane G. Leslie
Jim LeValley and
Nancy Philippi
Sharon Lewis and
Mayor Shanken
Marcia Lindley
Elaine Litvack
Anne and Ed Lyman
Kit and Joan Marrs
Lorene Martin
Michele and Richard
Mendenhall
Tye Merlo
Michelle and Joseph
Millstone
Jeanne Miyasaka and
Joseph Ryan
Mary and Joe Moeller
Linda Molm and
William Dixon
Irene and Chris Monson
Cynthia and Michael Moore
Faye Morse
Shirley G. Muney
Essie Nadler
Louise Florence and
Sarkice Nedder
Pat and Wayne Needham
Caren and Thomas Newman
Douglas Ng
Peggy Odendahl
Deborah Oseran and
Bobby Present
Susan and Chuck Ott
Denise Pappas
Jed Paradies
Laura and Tom Pew
Lauren and William Pew III
Ruth Pollyea
Sylvia Pozarnsky
and Tom Riley
Shelley Pozez
Sally Quinby
Ann H. Redding
Linda Riordan and
David Siegel

Christine and John-Paul
Roczniak
Chuck and Terri Roehrick
Rande Ross
Russ and Carolyn Russo
Drs. Adib and Vivi Sabbagh
Betty Anne Sarver
Stella and Richard Schaefer
Lewis Schorr
Ellie and Si Schorr
Gerald Schwartz
Arlene and Morton Scult
Susan P. Segal
Jeannette Segel
Cathy Shell
Genevieve and Pierre Sice
Evelyn G. and Daniel J. Simon
Beverly Simone
Marc Skalla
Alexis Smith-Schallenger
Susan and Eddie Smith
Barbara Soehnen
Bruce Spencer
Robert and Pru Stermin
Richard and Marie Stewart
Barbara Stokely
Katherine and Mark
Strumph
Gayle and John Swarbrick
Lisa and Robert Swift
Geraldine and Jerome Tamm
Linda and David Tansik
Susan and Glyn Thickett
Karen Thornton
Marlene Tompkins
Catherine and Bruce Uhl
Richard Walker
Marion Weber
Steven and Linda Wegener
Judy Weill
Adam Weinstein
and Kira Dixon
Wendy and Elliott Weiss
Marjorie and Lester
Westphal
Janice Wexelman and
David Bartlett
Maggie White
Lois Wienshienk
Jana and Mark Wilcke
Nancy and Ted Wolter
Steven Wool

PATRON

\$500 - \$999

Anonymous (8)
Joseph Acker
Anthony Adams
Joanne and Howie Adams
Gayle and Michael Ahearn
Pauline Albert

Nancy and Daniel
Alcombright
Susan and Larry Allen
Donn Alpert and Patti Behr
Cheri Anderson
Jessica L. Andrews and
Timothy W. Toothman
Susan L. Ashley
Jeannette and
Robert Barnes
Martha Baron
Maralyn and Brian Bates
Robin and Kent Batty
Clare and Duane Baylor
John Bechman
Cash and Susanne Beechler
Trudie and Peter Beestrum
Judy Berman
Carol Bishop
Latisha Bjone
Jesse Blum
Linnea and William Boaz
Nancy Bodinet and
Todd H. Franks
Judy and Robert Bolt
Emily Bott
Martha Brightwell
Jane and Marvin Brown
Kathy and Laird Brown
Sharley and Graham Bryce
John Burcher
Diana and Jay Caldwell
Tyna Callahan and Dimitri
Voulgaropoulos
Brian and Lauren Cantoni
Jennifer and Michael Caplan
Mary Carhuff
Daniel Chavez and
Sharon Oliver
Jonna and Tony Christensen
Mark Christenson
Jill and Kipp Clark
Lois and Tom Colberg
Arlan Colton
Connie and David Corbett
Kathryn and William Cullen
Clara Curiel and Kai
Lewandrowski
Susan and Ennis Dale
Carole and David Drachler
Donal Drayne
Jan and Leo Dressel
Jacques Dumont
Gail E. Dunlap
Al Efron
Jeffrey Eighmy
Donna and Bruce Elliott
Penelope Ewen
Maxine and Ted Eyde
Ronna Fickbohm
and Jeff Willis
Mary Jo Fitzgerald

INDIVIDUAL DONORS

Lucille Flaaten and Jan Olav
Brigitta and Curtis Forslund
Robert Fortuno
Patricia and Gary Fridley
Cheryl and Ira Gaines
Lynnell Gardner MD and
Michael Hamant MD
Jane Gellman
Lauralyn and Edward Gesten
Elizabeth Giles and
Stephen Simmes
Wendy and Richard Gilman
Wendy and Art Gmitro
Muriel and Marc Goldfeder
Kenneth and Betsy Gometz
Gail Adams and Jay Goodfarb
Susan Goodwin
Sara Gosschalk
Peggy Goulding
Susan Grana
Susan and Loring Green
Pamela Grissom
Jennifer Gross
Jerome and Anita Gutkin
Rita Hagel
Anne-Marie and Phil Hall
Russell Hall
Mary and Geoffrey Hamway
Aitha Hardt
Bonnie and Michael Harris
Lynn and Michael Harris
Suzanne Harris
Pam and Stan Hart
Sarajan and Jeri Harwood
Elizabeth and Jerrold Hatcher
Michael and Phyllis Hawkins
John Hay and Ruth Murphy
Anne Leary and Bill Hemelt
James Herzfeld
Susan Hetherington
Marcia and Gregory Hilliard
Leah Hoffman
Lynn R. Hoffman
Judy and Michael Holser
Lucy and Barry Holt
Linda and Wynn Houtkooper
Lee and Patrick Howe
Bryan and Charito Hughes
Norma Inkster
Marsha and David Irwin
Margaret Iverson
Ralph A. and Anna L. Jackson
Deborah and Jeffrey Jacob
William and Kimberly
Jacobsen
Jill and Stan Jankowski
Susan Johnson-Ash
and Gregory Ash
J.W. Johnson Family
Ayo Jordan-Jones
Lorri Jordan
Denice Just

Toni and Joseph Kane
Angela and Michael Kapp
Louise and Joseph Keane
Elizabeth Keith
Martha and George Kellner
Robyn Kessler and Jeff Timan
Dale Keyes
Bruce Kilbride and
Lynn Krabbe
Joan and Walt Koppenbrink
Gary Kordosky and Noreen
Geyer-Kordosky
Brian Kotarski
Barbara and Graham
Kretzman
Nancy and Kent Kwoh
Brenna Lacey and
Stephen Rodgeller
Lynne Lagarde and
Bob Stankus
Karen and Arvie Lake
E. Kay Landon
Susan and John Leader
Mary and John Leavitt
Ellen and Philip Leavitt
Dr. Alan Levenson and
Rachael K. Goldwyn
Lori Levine and Gary Benna
Bertie Lewkowitz and
Thomas Herz
Barbara and Martin Levy
Judith Libby
Jo and Matt Madonna
Pat and Art Mangels
Thom and Kathy Mansur
June Caldwell Martin
Ann and George Mavko
Dorothy and Roy Mayeske
Gretchen and James McGill
Barbara McHenry
Laura and Andrew Meyer
Leone Mohney
Wendy Burnham Morris
and Michael Morris
Ellen and David Murphy
Janet and William Murray
Kay Musser
Karen Nackard
Carolyn and Carl Nau
Sylvy Needham
Alice and Edward Newirth
Parviz Nikravesh and
Agnes Stahlschmidt
Nannette Nocon
Robert Nolan
Marcia and John Orcutt
John Orozco and Mary
Ann Sullivan
Norizan Osman and John Irbay
Stephanie Painter
Jane and William Pearson
Marie and Phil Pearthree

Sally and Ben Perks
Clyde and Jane Perlee
Jayne and Todd Peterson
Marie and Mike Piccarreta
Jeanne Pickering and
Mike Andrew
Leona and James Pomush
Agnes Laylah Poore and
Nathan Douglas
Barbara Provus and
Fred Wackerle
Teresa Kim and Mark Quale
Lisa and Steve Reynolds
Camille Rivas-Rutherford
Kim and Jim Rosborough
Todd Rosin and Todd
Armstrong
Shirley and Thom Rossa
Cheryl Roth
Donna and Darrell Sabers
Robert Salomon
Sally A. Sample
Kathi and Doug Sanders
Deborah and Marc Sandroff
Connie and Chuck Sanner
Claire and Henry Sargent
Barbara Sattler and
Ken Hegland
Oliver Schepelmann
Patricia and Harry Schlosser
Elizabeth Schulman
Robyn and Edward Schwager
Arleen and Fred Schwartz
Lisa and Brian Scott
Polly and Joe Seeger
Barbara and George Seperich
Neelam and Gulshan Sethi
Olivia Sethi
Bill Sheppard and Range Shaw
Whitney Sheets and
Kevin Gebert
Ed Shirley and Marge
Schneider
Patricia Simpson
Diane and Ken Skotak
Joyce and Jim Smith
Vicki and Bob Smith
Richard Snodgrass and
Merrie Brucks
Donald Spetner
Celia and Adam Staperfene
Nelle Starr
Dinah Stecki
David Steele
Claire Steigerwald
Dan and Jill Stevenson
Olga Strickland
Jonieta Stone
Shelly and Doug Stewart
Lori Surina
Susan M. Swick
Jay Sykes

James Tharp
Hugh and Allyn Thompson
Marcia and Tyler Tingley
Stuart Turner
Lisa Ungar and Robert Fridrich
Susan and Evan Unger
Mary Voyatzin-Frelinghuysen
and Frederick
Frelinghuysen
Barbara and John Walker
John and Connie Ann
Nygaard Wareing
Julia Waterfall-Kanter
and Brian Kanter
Caryll and Gerald Weber
Mary and Ronald Weinstein
Mel and Joni Weiser
Nancy and Peter White
Weegee and Scott Whiteford
Mary and John Wilber
Jody and Rob Wilson
Andrew Winsberg
Frey and Kenneth Winsberg
Suanne Woo
Addie Young
Sheri Zapp
Edwin Zimmermann
Elizabeth Zukoski

FRIEND

\$250 - \$499

Anonymous (15)
Stephanie and Jack Aaron
Nancy Abbott
Audrey and Daniel Abrams
Jada Ahern
Barbara and Wayne Algire
Lidia and Joel Allen
Ovadan Amanova-Olsen
Shirley and Thor Anderson
Miguel Arenas and
Katherine Belk-Arenas
Julia and Neal Armstrong
Rae and Peter Aust
Jennifer and Enrique Aviles
Marianne Ayres
Carole and John Backstrom
Gail and Michael Baer
Deborah Baker
Pamela and Frank Bangs
Jackie and Emery Barker
Susann Baron
Catherine Beardsley
Tony Bebbington
Jane Becker
Jeffrey F. Berg and
Debra H. Paget
Kathleen and Bill Bethel
David and Bonnie Bickford
Jean and James Blair
Rebecca Block and Tim Haskin
Barbara Bloom
Susan and John Bowers
Sharon and Barry Briskman
Sallie Britton
Roberta King and
Richard Broderick
Ann and John Brooks
Carolyn Brown
David and Janet Brown
Michael Heimbuch and
Mitchell Bunting
Bonnie and David Burnett
Renee and Marty Capanna
Kristin and James Carkeek
Elaine and Art Carlson
Patricia and Jon Carlson
Brenda and Lonnie Cavaliere
Elaine and Morton Cederbaum
Judith Chapman
Karen Chesrown
Carol Chor and Steve Klafner
Darrel Christenson
Pamela and Hans Churchill
Jay and Betty Citrin
Joyce A. and Richard S. Clark
David Cohen
Nancy Coon
Shelley and Kenneth Coriell
Joy Coyle
Sally and Robert Crawford
Paula and Michael Culbert
Lyndle Cummings
Victoria and John Curtin
Sandy Czachor
Janice and Roger Dahlgren
Sherry Dailey
Kathy Daniels
Marla and Dennis Daugherty
Michelle Davidson
Augusta Davis
Barbara Davis
Pennie DeHoff and Larry Wurst
Paul Delgado
Phil Derkum and Flora Yee
Aimee and Stephen Doctoroff
Aeni Domme
Karen and David Donnelly
Randi Dorman and Rob Paulus
John Douglas
Anonymous
Rebecca Dooxtater
Darrell Durham
Judith and Lawrence Effken
James Eichman
Rosaland and Seth Eisner
Lee and Spencer Elliot
Elaine and Mario Espericueta
Karen and Lionel Faltelson
Shera Farnham
Keith Figgins
Nancy and Richard Fintzy

FRIEND (CONTINUED)

\$250 - \$499

Nancy and David Flatt
Patricia Fluhrer
Judy and Richard Flynn
Sarilyn and Sherman Fogel
M. and R. Fowler
Timothy Freeh
Michele Frisella
Letitia Frye
Connie Furr
Greg Furrier
Allen and Bruce Galin
Lavon and Hugh Gallagher
Christine Galloway
Claire Genser
Gary Gephart
Carol and Paul Gerlach
Gini and Gary Gethmann
Ami and John Giardina
Mary and Robert Gillett
Miriam and Richard
Glabman
Linda and James Goggin
Ann H. Goldberg
Midge and Gerald Golner
David A. Gordon
Eloise Gore and Allen Hile
Mary and John Gorny
Brad Graber
Janet Grace
Stephen Graff
Donita Gross
Ann and Mike Guilfoxy
Leslie and Michael
Hammond
Patti Haring
James Hazlewood
Paige and Melvin Hector
Johnny Helenbolt
Pat and John Hemann
Martha and Charles
Henderson
Bette Henriques
Jeanne Heyerick
Dolores and Doby
Hillenbrand
Sharon and Jesse Hise
Sarah Hiteman
Mary Hojnacki
Marta and Robert C. Holl
Gerri and Barry Holt
Zina and Michael Horrell
Patty Burger and
Robert Howard
Thomas Hudak
Lori and David Iaconis
Christel and Kenton Ide
Melva Irvin
Lisa and Gary Israel

Deborah Jamieson
and Scott DeWald
Thomas Jensen
Marcelle and Leonard Joffe
Anna Johnson
Mary and Thomas Johnson
Pam Johnson
Richard and Shirley Johnson
Beverly and Robert Jones
Robin and Michael
Kaiserman
Bryan Kapadia
Hy Kaplan and Sue Vardon
Andra Karnofsky and
Charles Gannon
Fran and Jeff Katz
S.B. Katz, MD, JD and
D. Stephenson
Pamela and Charles
Katzenberg
Lendre and King Kearns
Judith Kelly
Raymond Kemp and
Richard Douglas
Alan and Cynthia Kempner
Janice and Tom Kennedy
Judi Kessler
Susan and Carlton King
Suzanne King
Carolyn Kinney
Barbara and Jay Kittle
Stephen Klafter
Marsha and Donald Klein
Suzan-Oda and Bill Knese
Susan and Richard Knutson
Wendy and Karl Koch
Neil Kochenour
Judith and John Kofron
Sherrill and Ravi Koopot
Nina and Michael Kotin
Jessica and Stephen Kozloff
Michael Kramer
Bruce Krech
Tamar Rala Kreiswirth
and John DeLuca
Judy Krolkowski
Alan E. Kruse
Kathryn Lambert
Kathryn Lamm
Sally Lanyon and
Paul Hawkins
Heli Lanz
Lucinda and Garvin Larson
Joelle and Donald Lawson
Diane Lebel
Amy Lederman
Brian Lensink and
Barbara Brent
Maxine and Jeffrey Leonard
Leo Litowich
Amanda Lomayevsa
Paul Loucks

Gypsy and David Lyle
Laura and Barry Mac Ban
Cornelia and Stuart MacKay
David Mandel and Jill
Jackson-Mandel
Irene and Bill Marsh
Donald Mateyka
Shirley and Stanley Matlick
Felicia and Warren May
Theodore and Almeda
Maynard
Sandra McNabb
Virginia Mead
Suzanne and Greg Medley
Claire and Earl Mendenhall
Beth and Marco Mercaldo
Jeffrey Messing
Mark Mettes
Judith D. Meyer and Dr.
Richard B. Meyer
Anna and Jeremy
Mikolajczak
Janene Miller
Roberta Miller
Eleanor and George Mink
Helene and Frederick
Mittleman
Andrea Molberg and
Hank Greenleaf
Frances Moore
Phyllis Morgan
Betsy and Jim Morrow
Virginia and David
Morthland
Susan and Larry Moss
Melvin E. Mounts
Donald Mower
Timothy Mulcahy
Molly and Jordan Munic
Dana and Rick Naimark
Susan and James Navran
John Neuberger
Julie and Douglas Newton
Margie Nicholson
Sara and Ben Norton
Elise and Rick Oestreich
Susan and James Opeka
Michael and Patricia Ore
David Ormand
Jones Osborn
Anny and Lester Packer
Esther M. Pasalis
Jean and John Payne
Alyce Pennington
Sheila Peress and
John Velez
Frederick Peterson
Karen and William Peterson
Shelley Phipps
Susan Morris and
Richard Plattner
Harvey Prendeville

Sheila and Robert Press
Laura and David Rabb
Gary and Susan Redeker
Patricia and Wallace
Rickards
Kathleen Rife
John Ritchie
Carolyn Robbins
Joan Roberts
Alice and Bill Roe
Anne Roediger
Christina and James
Ronstadt
Emily Rosenberg Pollock
Quinta and Philip
Rosenberg
Shirley and Thom Rossa
Barbara and Kent Rossman
Sharon and Richard Rundle
Stephen and Ruth Russell
Sandra Rutherford
Dee Ann and James
Sakison
Betty Saylor
Judy and Michael Schaffert
Wendy and Marlene Schiller
Jerusha Schmalzel
Jennifer Schneider
Luanne Schocket
Nan Schubel
Alban and Pinky Schuele
Veronica and Richard
Schultz
Jacqueline and Paul Schulz
Phyllis and Bruce
Schumacher
Howard and Trudy Schwartz
John and Maria Schwarz
Sharon and Norm Scott
Judith and Bernard Segel
Ann and Perry Sells
Susan and Mark Sendrow
James Seward and
Julie Karcis
Susan and Sol Shatz
Beverly and Herb Sheathelm
Robert Sheely
Gregory Sheets and
Gary Beavan
Betty Shelby
Mary Jo Sheldon-DiVito
and William DiVito
Marvin Siegel and
Eileen Bloom
Miles Silverman
Rita and Harvey Simon
Ray Sivananthan and
Kay Wolfkeil
Randall Smith
Sandra CH Smith
Richard Snyder and
Linda Jensen

Sara and Larry Soller
Joseph Specter
Jennifer Spencer
Kay Spencer
Gail Spiegler
Rica Spivack
Linda Staubit
Gail and Richard Steiner
Alice and Joel Steinfeld
Diane and David Sterle
Darryl and Helen Stern
Randy Sterna
Howard C Stewart, Jr
Susan and Mark Stodola
Barbara Staub
Barry Streit
Patti Suarez
Mary Beth Sutor
John Szafranski
Carolyn Terkla
Sandra and Barry Thall
Mark and Lynn Thomas
Ingrid and Frank Tolone
Christopher Tong
Gayle A. Traver
Diane and Dale Tretschok
Larry Tuck
David and Kathryn Unger
Rick Unklesbay
Margaret Norem
Harvey Unti
Joan and Jerry Vandervoort
Mina and Richard Van Dyne
Ellen and David Vellanga
Kevin Volk
Marianne Vivrito and
Ross Iwamoto
Karen Warrick
Susan Warrickman and
Terry Corbett
Patricia Waterfall
Gary Waugh
Rosemary Weil
Sharon and Marc Weisel
Carol and Lester Welborn
Stephanie and John Weldon
Paul Wentworth
Carol and Phil Wheeler
John Whiteford
Pamela and Dennis Winsten
Marilyn and Peter Woods
Geri Wright and John Cox
Elvira "Nellie" Ziegler

GIFTS IN HONOR OF

ATC Alumni Society by Anonymous

ATC Staff by Mary and Matthew Palenica

Char and Alan Augenstein by Janice and Tom Kennedy, and Sharon Calnan

Kathleen Bader by Ann Bader

Madeline Barr by Marilyn O'Connor

Betsy Bolding by Patricia Engles and Dick Medland, Jessica L. Andrews and Timothy W. Toothman, Emily Rosenberg Pollock, Karen T. Scates, Bill Sheppard and Range Shaw

Martha Brumfield by Susan Marcus

Carol Byrners by Desha Byrners

Sean Daniels by Anonymous, Desha Byrners, Sharon Carstens, and Brad Casey

Beth Dino, and Keith DeConcini by Norma and Stanley Feldman

Ryan DeLuca by Tamar Rala Kreiswirth and John DeLuca

Aune DeWitt by Schuyler DeWitt

Mary Ann and Darryl Dobras by Sara and Ben Norton

Christian Duhamel by Teresa and Gerald Duhamel

ASU Prof. Emeritus Bonnie Jean Eckard by Michael J. Olsen

Pat Engels by Judith Brown, Barbara and Wayne Algire, and Barbara Provus

Dr. Anthony Fauci by Patricia and Barry Boydston

CJ Funfeld by James Herzfeld

Laurie and Rob Glaser by Debbie Goodman and Patrick Butler and Deborah and Jeffrey Jacob, Cushman & Wakefield | PICOR Commercial Real Estate Services

Tana Hicken by John Dow

The Connie Hillman Family Foundation by Anonymous

Ron Hunting by William Klever

Gary Jackson by Richard McCartney, Veronica Amendola-Penzon and Paul Penzone, Elizabeth and Richard Pagel, Thomas Evans, Bobb Cooper, Carol Poore, Ph.D., Dennis and Kristin Ford, Alexis and Patrick Magness, William and Kimberly Jacobsen, David Roche, Letitia Frye, Kimberly Riggs, Javier

Soto, Larry Lytle, Ava Spanier, Martha Abbott, Robert Kerry, Catherine Anaya Saunders, Heather Wagenhals, Jill and Rod Kristgen Riley, Nicole and Greg Stanton, and Michael Fornelli

Michael Kasser by Carolee and Daniel Asia, David Cohen, and Marc Skalla

Wanda McHatton by Bill Sheppard and Range Shaw

Marta McKenna by Bert Whitehead

Rita Meiser by Bill Sheppard and Range Shaw

Mike Murphy by Jan Waterman and Andrew Robinson

Tracey Kurtzman by Carol Galper, Melinda Morss, Lynne Cunningham, Richard Wahl, Margaret C Nelson, Alissa and Jed Sadalla, Dawn Mangum, Fanny Nisbet, Zuber Mulla, and Jamie Weinand

Sherri Lennarson by Nancy and Brian Jackson

Terry Lowe by Kevin Flanagan

Dr. Lorraine Mackstaller by Norma and Stanley Feldman

Richard Piro; Educator, Director, Colleague, Friend by Bruce Birnel

Emily Pollock by Karen Young

Brian Quijada by Rosemary Espinosa and Bonnie Shlensky

Jeff and Susan Rein by Anonymous and Laurie Meyer

Elizabeth Rosenberg by Barbara Rosenberg

Laura Rosenberg by Carol and Chris Dubrowski

Kathleen Shappee-Wood by Leonard Wood

Brad Smith by Donna Neighbors

Paula Taylor by Todd Rosin and Todd Armstrong

Brannon Wiles by Betsy and Jim Morrow

Geri Wright by Your Part-Time Controller, LLC, Frank Goodyear, and Anonymous

Joel Zimmerman by Dru Pearson

GIFTS IN MEMORY OF

John Allen by Sarajeon and Jeri Harwood

Martin Becal by Eva Becal

Michael Belton by Anna Don

Ruth Bersbach by Suzie Gretzer

Curt Boyer by Cheri Boyer

Allison Brevard by Maria Phipps

Angus E. Burke by Pamela and Dennis Winsten

Rose Byrne by Kay Dodder

June Caldwell Martin by Diana and Jay Caldwell

Esther Capin by Elizabeth Keith

Barbara Dale by Deb Dale

Pat David by Lisa Rafferty

John Degan by Jennifer Trice

Kathi Doudnik by Ginny Spencer

Carol DuVal Whiteman by Bill Sheppard and Range Shaw, Norma and Stanley G. Feldman, Jessica L. Andrews and Timothy W. Toothman, and Betsy Bolding

Slivly Edmonds by Bill Sheppard and Range Shaw and Jessica L. Andrews and Timothy W. Toothman

Catherine Farren by Marie Farren

Eleanore Golden by Debra Golden-Davis

Kenneth Greenfield by Ruth Zales

James Gregg by Larry Brimmer

Alan Harris by Rebecca Richardson and Diane Lebel

Anne and Paul Hochberg by Davie Glaser

Hal Holman by Mary Bielski

Francis Jank by Caroline Jank

Keith Johnson by Pamela Johnson

Barry Kalpin by Amie and Jeff Coleman

Irene Kelly by Evelyn and Brian Kelly

Ruth Kolkner by Ronald Kolkner

Janice Krokum by Karen

Wilkinson-Maedge

Nathan Levine by Anonymous

Warren Lyerla by Karen Wilkinsin-Maedge

Tony Marrs by Karry Marrs

Gerry Murphy by Shirley Estes, Bill Sheppard and Range Shaw, Jessica L. Andrews and Timothy W. Toothman, and Betsy Bolding

Wyonas Pennington

Miller by Roberta Miller

Brian Peterson by Kerry LaMountain

Charles Rood by Mr. and Mrs. John Logie, Ralph A. Greene, Wendy and Marlene Schiller, Margaret Sharkey, and Jane and James Peterson

Art Rotstein by Rochelle Brickman

Eve Schocket by Luanne Schocket

Geri Silvi by Jennifer Spencer and Carol Gelinas

Brad Smith by John Ritchie

Larry Smith by Bill Sheppard and Range Shaw

Richard Stahl by Bill Sheppard and Range Shaw

Sharon K. Stewart by Howard C. Stewart, Jr.

Stephen Thompson by Susan Thompson, Barbara E Bauer, Gary Martin, Donald Mateyka, Rosemary Weil, and Southern Arizona Anesthesia

Donna Tingom by Anonymous

John Ulrich by Randall Smith

Bernie Weingarten by Karen and Clyde Farkas

Jessica Grace Wing by Jennifer Schneider

Kathryn Wolfe by Gary Wolfe

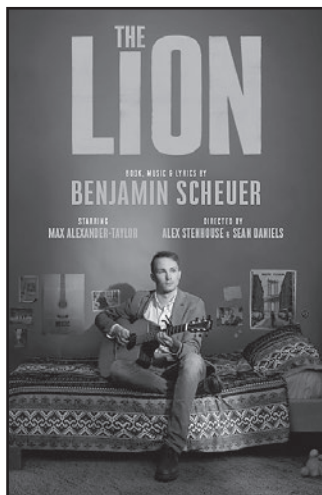
Georgia Yost by Sally McKenzie

Lucian Zabramny by Dorothy Kret

Marcy Zachmeier by Karen Wilkinsin-Maedge

atc

Arizona Theatre Company

2022/2023 SEASON**10/20/22 – 11/06/22****THE LION**

By Benjamin Scheuer

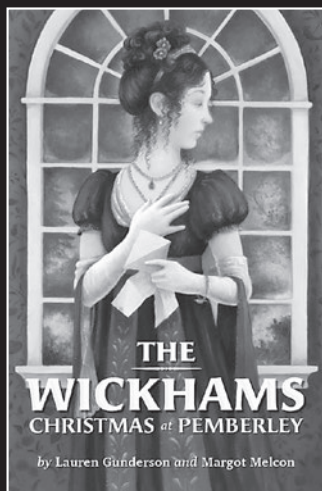
Directed by Sean Daniels & Alex Stenhouse

***Some stories have to be sung***

After its first revival in London at Southwark Playhouse this summer, *The Lion* opens ATC's 55th Season with a heartwarming and powerful one-man folk musical. Co-produced by Arizona Theatre Company and Danielle Tarento, and co-directed by Sean Daniels and Alex Stenhouse, *The Lion* tells a true story of survival and redemption that reminds us that great things can come from challenging times. Actor, singer, and musician Max Alexander-Taylor stars in the lead role of Ben.

***"Spellbinding! See it now. See it again.
The best musical I've seen this year!"***

— *Huffington Post*

**12/08/22- 12/23/22****THE WICKHAMS:
CHRISTMAS AT PEMBERLEY**

By Lauren Gunderson & Margot Melcon, Directed by Veronika Duerr

***A holiday story about what it means to truly
give in the season of giving***

Boisterous sister Lydia Wickham returns front and center for this holiday season joined by her long lost husband and the home's downstairs residents. The bustling staff find themselves amid a holiday scandal, complete with misunderstandings and shenanigans. When the festivities spiral into chaos, Lydia finds her voice in this celebration of family and forgiveness. Don't miss this sequel to last season's holiday show!

***"This is a play for everyone. And it's an outing that is sure to boost the
holiday spirit. If you only see one more play this decade, let this be the one."***

— *Broadway World Atlanta*



02/16/23 - 03/05/23

THE GLASS MENAGERIE

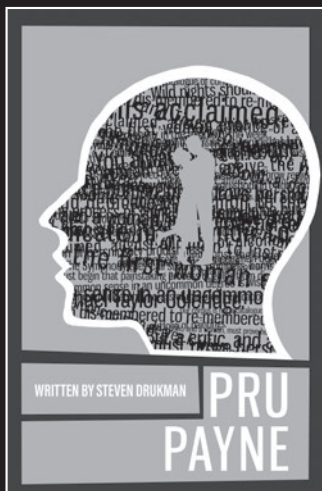
By Tennessee Williams, Directed by Chanel Bragg

An intimate and intense classic reimagined for ATC's stages

The Glass Menagerie, one of the greatest plays of all time, is a poetic and raw portrayal of a family on the brink of change. Reimagined for Arizona Theatre Company's stages, this intimate and intense classic that changed the way we tell stories draws from the memories of narrator Tom and explores the complex web of love, longing, loyalty, and constraints that bind families together. Directed by Chanel Bragg, the play continues ATC's history of investigating and reimagining the classics.

"Memory takes a lot of poetic license. It omits some details; others are exaggerated ... for memory is seated predominantly in the heart."

— Tennessee Williams. *The Glass Menagerie*



03/30/23 - 04/16/23

PRU PAYNE

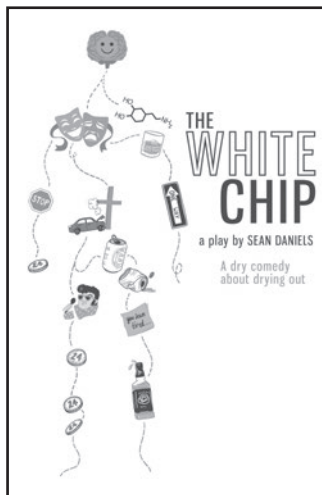
By Steven Drukman, Directed by Sean Daniels

A life-affirming story of love, (memory) loss, and dealing with it all

Written by Pulitzer Prize Nominee Steven Druksman, this ATC world premier is a remarkable, funny, and life-affirming story about the relationship between a mother and son. An esteemed critic, Prudence "Pru" Payne is widely recognized as a wit, a scholar, and a public intellectual; her son Thomas lives in that shadow. But as her memory begins to fade, all her preconceived notions — about herself and, more importantly, others — also slip away.

"Memory takes a lot of poetic license. It omits some details; others are exaggerated ... for memory is seated predominantly in the heart."

— Tennessee Williams, *The Glass Menagerie*



05/11/23 - 05/28/23



THE WHITE CHIP

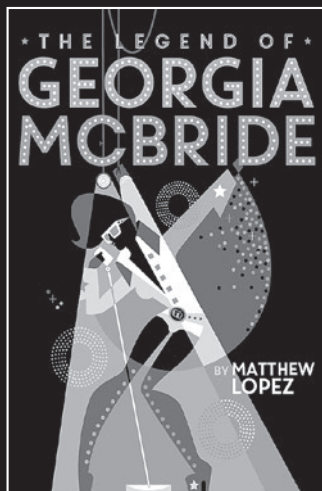
By Sean Daniels, Directed by Sheryl Kallerg

A dry comedy about drying out

Originally produced by Tony Award winner Tom Kirdahy, *The White Chip* shows a path to recovery that is poignant, funny and uplifting. A dry comedy about drying out, the show follows the main character Steven as he forms a new bond with his mother while carving an unusual path to sobriety. A wild, theatrical journey, *The White Chip's* Off-Broadway production will come to Arizona alongside a Tony-nominated director and Tony Award-winning designer.

"It's a winning show and a thorough success ... Daniels has triumphed."

— *The Boston Globe*



06/29/23 - 07/16/23



THE LEGEND OF GEORGIA MCBRIDE

By Matthew Lopez, Directed by Meredith McDonough

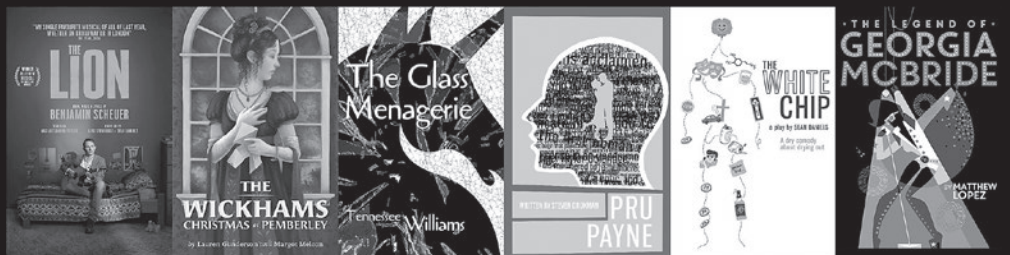
A big-hearted, fierce, music-filled comedy

Casey, an Elvis impersonator with everything going for him — including a flashy sequin jumpsuit — suddenly loses his gig, his rent is overdue, and his wife announces a baby on the way. So, when Elvis leaves the building and a drag show moves in, "The King" transforms into an all-out queen with some help from his new friends. With snappy zingers and dance-worthy numbers, this wildly entertaining story challenges assumptions with extraordinary humor and depth.

Tony Award-winning author Matthew Lopez is the 2020 recipient of the Drama Desk Award for Outstanding Play, Drama League Award for Outstanding Production of a Play, and GLAAD Media Award for Outstanding Broadway Production.

"Full of sass and good spirits - along with a spritz or two of sentimentality ..."

— *The New York Times*



WE DON'T WANT YOU TO MISS ONE THRILLING SCENE!

The 55th season is full of award-winning writing, acting, and production. With Tony Award-winning artists, Drama Desk Winners, three New York Times Critics' Picks, West End favorites, and best-loved Arizona locals, audiences will see the best of the world here.

Arizona Theatre Company offers a variety of subscription options for all the shows you want to see, when you want to see them.

6-PLAY BENEFITS

You're a VIP subscriber! See every show of the season and be among the first to choose your seats. Need a different date? Unlimited exchanges FREE! Packages available to fit every budget.

- **Unlimited FREE exchanges**
- **First access to seats!**
- **Priority renewals and seating upgrades**
- **50% off additional single-purchase tickets**
- **First choice for special engagement tickets**

PREMIUM FLEX PASS SUBSCRIPTION BENEFITS:

Enjoy Subscriber benefits on your terms and experience shows from the best seats in the house! Purchase a 10, 8, 6, or 4 Flex Pass Subscription, then use passes all at once or choose dates closer to show time. Use any or all passes to any production. If you run out ... BUY MORE!

- **Access to PREMIUM seats!**
- **Bring a friend!**
Buy additional tickets at your Flex Pass price
- **Choose your seats before single tickets go on sale**
- **One FREE exchange for every show selected**
- **First choice for special engagement tickets**

FLEX PASS SUBSCRIPTION BENEFITS:

Get your tickets the way you want! Available in 10, 8, 6, or 4 Flex Pass Subscriptions, you can lock in your pricing and attend the shows you want. If you run out ... BUY MORE!

- **Best available seats in Sections 1, 2, or 3**
- **Bring a friend!**
Buy additional tickets at your Flex Pass price
- **Choose your seats before single tickets go on sale**
- **\$5 exchange fee per ticket exchanged**
- **First choice for special engagement tickets**

SUBSCRIBE TODAY! ATC.ORG/SUBSCRIBE

Honors those friends of ATC who have established a gift through a bequest, trust arrangement, or other estate plan provision.

Anonymous*

Anonymous

Cameron and Mary Artigue

JoAnn and David Becker

Helen and Robert Begam*

Nathaniel and Suzanne Bloomfield

Dr. and Mrs. James F. Blute, III

Betsy Bolding

Thomas Chapman

Jacklyn Connoy and William Maguire

Len* and Doris Coris

Slivy Edmonds*

Bob and Nancy Eschrich

Carol Fink

Joanie Flatt

Michael O. Flatt*

Ted and Barb Frohling

Harry and Lois Garrett

Dr. Mary Jo Ghory

Steven Cohen and Michael Godnick

Chester and Ann Goldberg*

Mr. Terrance M. Hanson

Mr. and Mrs. Edward J. Harrison

Andrew F. Holtz

Jacqueline Hufford-Jensen

and Gregory Kroening

I. Michael and Beth Kasser

Bill and Kathy Kinney

Maxine and Jonathan Marshall*

Joan A. Morris

Melvin E. Mounts

Peggy and Gerry* Murphy

Don* and Peg Nickerson

Martha and Terry Allen Perl

Ronald Robinette and

Sharon Roediger

Arnold and Carol Rudoff

William C.* and Deborah

Chisholm Scott

F. William Sheppard

Daniel J. and Evelyn G. Simon

Richard Stahl*

Robert* and Shoshana Tancer

Roy Van Note

Virginia A. Weise*

Mark and Taryn Westergaard

Maggie White

Mr. and Mrs. Richard H. Whitney

* deceased

ATC'S LEGACY SOCIETY

The future is made more certain
by those who invest in it.



Veronika Duerr and Nandeep Khurmi in ATC's *Silent Sky*. Photo: Tim Fuller.

ATC's Legacy Society was established to recognize individuals who have made a planned gift to ensure the Company's vision lives on well into the future.

Whether you contribute through a bequest in a will or trust, or a beneficiary designation on your retirement account, life insurance, or other estate-planning vehicle, your legacy gift ensures that ATC continues to bring world-class theatrical productions to our stages, reaching generations for years to come.

LEGACY SOCIETY BENEFITS:

- Recognition in the ATC program book for the entire season.
- Exclusive updates from our Artistic department throughout the season.
- Exclusive invitation to our annual Legacy Society Luncheon event.

Sean Daniels

The Kasser Family Artistic Director

Geri Wright

Managing Director

ARTISTIC

ASSOCIATE ARTISTIC DIRECTOR
Chanel Bragg

ARTISTIC ASSOCIATE
christopher oscar peña

ARTISTIC PRODUCER
Kristi Hess

LITERARY MANAGER
Michele Volansky

PLAYWRIGHT-IN-RESIDENCE
Elaine Romero

COMPANY MANAGER
Angie Staats

EDUCATION

DIRECTOR OF EDUCATION
Christopher Moseley

EDUCATION OUTREACH COORDINATOR
Emily Burritt

PRODUCTION

PRODUCTION MANAGER
Becky Merold

ASSISTANT PRODUCTION MANAGER
Sheldon Lane

PRODUCTION OFFICE MANAGER
Hannah Al-Baiaty

STAGE MANAGEMENT

PRODUCTION STAGE MANAGER
Glenn Bruner

STAGE MANAGER
Dom Ruggiero

ASSISTANT STAGE MANAGERS
Mollie Heil
Olsen Torres

STAGE MANAGEMENT APPRENTICE
Mykel Marie Hall

SCENERY

TECHNICAL DIRECTOR
Nils Emerson

ASSISTANT TECHNICAL DIRECTORS
Taylor Moss
Arthur Potts

CARPENTERS
John Crain
Cory Walters

PAINTS

CHARGE SCENIC ARTIST
Charlotte Alcorn

ASSISTANT CHARGE SCENIC ARTIST
Sammantha Nickel

PROPERTIES

PROPS SUPERVISOR
Sara Pugh

ASSISTANT PROPS SUPERVISOR
Andrew Babb

COSTUMES & WARDROBE

COSTUME SHOP MANAGER
Mary Woll

COSTUME DESIGN ASSISTANT
Kish Finnegan

COSTUME SHOP ASSISTANT
Sandahl Tremel

DRAPER
Phyllis Davies

WIG & MAKEUP SUPERVISOR
Maggie Clark

WARDROBE SUPERVISOR
Kelsey Waller

PHOENIX LEAD DRESSER
Afton Hensley

LIGHTING AND PROJECTIONS

LIGHTING & PROJECTIONS SUPERVISOR
Tim Smith

LEAD ELECTRICIAN
Brittany Tennis

STAFF ELECTRICIAN
Shane Sumner

SOUND

SOUND SUPERVISOR
Mathew DeVore

PRODUCTION SOUND ENGINEER
Jason Campbell

ADMINISTRATION

GENERAL MANAGER
Julie Fancher

EXECUTIVE ASSISTANT
Nick Cianciotto

DEVELOPMENT & MARKETING

CHIEF DEVELOPMENT AND MARKETING OFFICER
Paula Taylor

DIRECTOR OF ANNUAL FUND AND STEWARDSHIP
Carley Elizabeth Preston

GRANTS MANAGER
Gretchen Pace

EXECUTIVE ASSISTANT EVENTS MANAGER
Stacey Jay Cavaliere

DEVELOPMENT ASSISTANT
Em Bell

SENIOR MARKETING MANAGER
Bitty Rosenberg

CREATIVE AND BRAND MANAGER
Richard Giuliani

MARKETING COORDINATOR
Berenice Zubiate

FINANCE

CHIEF FINANCIAL OFFICER
Mark Kochman

ACCOUNTING COORDINATOR
Bob Jennens

ACCOUNTING ASSOCIATE
Patricia Walter

BOX OFFICE & HOUSE MANAGEMENT

DIRECTOR OF PATRON SERVICES
Juliet Martin

MANAGER OF PATRON SERVICES
Richard Ragsdale

BOX OFFICE MANAGERS
Sara Kavitch
Linda Schwartz

ASSISTANT BOX OFFICE MANAGERS
Keith LaSpaluto
Carrie Luker

BOX OFFICE AGENTS
Katelin Andrews
Sarah Smiley
Wendy Sander

HOUSE MANAGER
Bill Bethel

FACILITIES

FACILITIES MANAGER
Horace Ashley

MAINTENANCE SUPERVISOR
Dean Morgan

MAINTENANCE TECHNICIANS
Alan Elkin
Jesus Francies
Derrick Herrera

ARIZONA THEATRE COMPANY AT THE HERBERGER THEATER CENTER

BOX OFFICE INFORMATION

Monday – Friday: 10:00 am to 5:00 pm
Evenings: One hour prior to performance

LOCATION

The Box Office is located on the southeast side of the building, near the corner of 3rd and Monroe Streets.

PURCHASING TICKETS

Tickets for ATC productions may be purchased in person at the Herberger Theater Center Box Office, by calling 602-256-6995, or through our website www.atc.org.

PAYMENT METHODS ACCEPTED

Arizona Theatre Company accepts cash, personal checks, American Express, Discover, MasterCard, and Visa.

REFUND POLICY

Refunds are offered for canceled performances only.

GROUP & DISCOUNT INFO

Please contact ATC's Patron Services Manager at groups@atc.org.

FACILITY INFORMATION

CHILDREN

Children under 3 years of age are not permitted in the theaters, unless otherwise specified by the performing company.

EMERGENCY EXIT NOTICE

Emergency exits are indicated by the red Exit signs located above certain doors. Please check the location of the nearest exit after you have taken your seat. It may not be the same way you entered.

RESTROOMS

Restrooms are located in the first- and second-floor lobbies between Center Stage and Stage West.

SERVICES FOR PATRONS WITH DISABILITIES

The Herberger Theater Center strives to be accessible to all patrons. Request special service when purchasing tickets or arriving at the theater. Infrared assistive listening headsets are available in the lobby. Arizona Theatre Company provides audio-described performances for the visually impaired and ASL interpretation for the hearing impaired. Call the Box Office for dates and performance times.

LATECOMER SEATING POLICY

Patrons arriving after a performance has begun may be asked to wait in the lobby. At the appropriate time, latecomers will be escorted to available seating near the back of the orchestra or to the balcony, and may proceed to their ticketed seats at intermission.

CELL PHONES & PAGERS

Please turn off all cell phones, pagers, and watch alarms before entering the theater.

LOBBY REFRESHMENTS

Conceptually Social Café sells beverages as well as light and delicious food items 60 minutes prior to performances and during intermission. Beverages purchased in the lobby are permitted in the theater. To avoid intermission lines, you can pre-purchase your food and drinks and have them ready when intermission begins.

SMOKING

Smoking is prohibited in the Herberger Theater Center. In the event of smoking onstage, non-nicotine electric cigarettes or non-nicotine herbal substitutes will be used, and a sign will be posted in the lobby.

LOST & FOUND

Please call 602-254-7399 x0 regarding items left at the Herberger Theater Center.

EMERGENCY TELEPHONE CALLS

Please leave your name and seat location with the Herberger's Patron Services Manager if you are expecting emergency calls during the performance, and leave the phone number 602-254-7399 x0 with your telephone service.

TOURS

The Herberger Theater Center provides free tours of the facility by appointment. Call 602-254-7399.

PARKING PASSES

Purchase your parking pass online.

HTC CONTACT INFORMATION

222 E. Monroe Street
Phoenix, AZ 85004

ADMINISTRATIVE OFFICES
602-254-7399

BOX OFFICE

Fax 602-258-9521

www.HerbergerTheater.org

THE VIDEO AND/OR RECORDING OF THIS PERFORMANCE BY ANY MEANS WHATSOEVER ARE STRICTLY PROHIBITED.



Arizona Theatre Company puts our artists and audience at the heart of all we do. ATC's performances bring people together on our stages to experience essential stories about what it means to be alive today, from reimagined classics to contemporary plays, original works, and innovative musicals fostering continued conversation beyond the theatre walls.

Founded in 1966 and celebrating its 54th season, ATC is led by The Kasser Family Artistic Director Sean Daniels and Managing Director Geri Wright. ATC operates in two major cities, unlike any other LORT theatre in the country, and is recognized as the official State theatre.

Each season, ATC collaborates with world-class artists to create productions and programs about what it means to be alive today, inspiring curiosity and sparking joy, bringing all Arizonans together.

ATC shares the power of theatre through a variety of outreach programs, educational opportunities, access initiatives, and community events. Including our nationally recognized ATCteen program and National Latinx Playwright Award, ATC focuses on training artists, audiences, and community members about the creative power of theatre reaching far beyond the metropolitan areas of Tucson and Phoenix, enriching the theatre learning experience for all.

ATC SUPPORTS ITS VITAL MISSION WITH THESE KEY INITIATIVES:

ATC Mainstage

Each season, ATC produces six mainstage productions, bringing together the best talent from across Arizona, the country, and the world. ATC playwrights, directors, designers, actors, and production teams represent the finest artists and technicians working today.

Engagement in Phoenix and Tucson

ATC provides a place for communities across Arizona to gather, share, and explore the art-making process.

New Play Development

ATC provides playwrights and theater makers, both locally and internationally, a place to develop their work. Through workshops and readings, we give artists a place to incubate and launch productions, both at ATC and beyond. ATC is also proud to support emerging voices with the annual National Latinx Playwright Award.

Education and Outreach

ATC delivers inspiring experiences in a number of ways, both connected to our stage and beyond our walls, in schools, and across the state. Core programs of our education efforts include Summer On Stage, ATCteen, Student Matinees, and the Artist-In-Residence program.



GIVING IS AS EASY AS

1

GIVE TODAY

Make a gift to ATC and help transform the lives of every Arizonan through the power of theatre.

2

GIVE MONTHLY

Monthly giving is quick and easy and makes a big impact.

3

LEAVE A LEGACY

A planned gift ensures ATC's future for countless generations of theatre lovers to come.

atc

Arizona Theatre Company

CALL: **520-463-7669**

ONLINE: **ATC.ORG/GIVE**

POST: **PO BOX 619, PHOENIX, AZ 85001**

BOARD OFFICERS

Char Augenstein, Chair

Pat Engels, Chair Elect

Kay Oliver, Secretary

Nora Hannah, Treasurer

BOARD OF TRUSTEES

Phil Cowen

Sean Daniels

The Kasser Family Artistic Director

Deanna Evenchik-Brav

Joanie Flatt

Mary Jo Ghory

Jeff Guldner

Stephen Heitz

Gary Jackson

Brian Jorgensen

Adam James Michael

Michael O'Connor

Karen Peters

Joan Sherwood

Erica Stutman

Geri Wright

Managing Director

EMERITUS TRUSTEES

Paul Baker

Katie Dusenberry

Lynne Wood Dusenberry

Darryl Dobras

Kay & Walter Oliver

I. Michael Kasser

Dr. John Schaefer

F. William Sheppard

EMERITUS DIRECTORS

David Ira Goldstein

Artistic Director Emeritus

Jessica L. Andrews

Managing Director Emeritus



SPECIAL THANKS

Arizona Theatre Company sends an extended thank you to all of those who have helped to make this production possible.



A SPECIAL THANK YOU TO THE
VIRGINIA G. PIPER CHARITABLE TRUST
FOR AWARDING ATC WITH
A TRANSFORMATIONAL GIFT FROM THE
'NOW IS THE MOMENT' GRANT.



STEMSWAG.CO

A heartfelt thank you to the wonderful artists at Stem Swag who have donated the breathtaking floral arrangements for Opening Night.



THE ROADMAP TO AN ATC PRODUCTION

SELECT HIGHLIGHTS

PLAY IS WRITTEN

Sometimes it takes 2 days, sometimes it takes 20 years. Sometimes it comes in whole, sometimes it comes in pieces or waves. It is written and rewritten over and over. It is hard work creating something out of nothing.



DESIGN AND CONSTRUCTION

About 1 year before opening, the design meetings are held so the whole team can meet and talk about what the production will look, sound, and feel like, based on how they have interpreted the play.

3-6 months before opening, the set is built and costume designs are finalized.



PUBLICITY, MARKETING, & FUNDRAISING

Plays need audiences, so the publicity and marketing team is hard at work looking for ways to entice both Tucson and Phoenix communities to come and see the show. The development team is also fundraising from individuals, corporations, foundations, and the government to make sure the money is there to pay for the production.



THE PRODUCTION IS CAST

Auditions are held 6-12 months before opening. Auditions let the director and playwright find actors who are able to fill the needed roles – a cast is selected based on talent, how right they are for the role, and sometimes just because it feels right. At this point, technical workers like lighting crew, stage crew, and others may be assigned or hired.



WEEK OF PREVIEWS IN TUCSON

Previews take place one week before opening night. By this time the play has transformed itself into a full production, but it needs just a bit more time to make sure that everything is running smoothly. Sometimes there are adjustments to the play itself, occasionally tweaks to design elements. The goal is to put everything together while also seeing how an audience responds to the work.



TUCSON AND PHOENIX RUN

Arizona Theatre Company is the only LORT theater in the United States that has audiences in two cities, so during the show's run in Tucson, publicity for the show in Phoenix intensifies. The stage manager ensures that the production stays on track and makes adjustments as necessary.

