



NOVEMBER 6 - DECEMBER 4, 2021

ARIZONA THEATRE COMPANY

SEAN DANIELS 
THE KASSER FAMILY ARTISTIC DIRECTOR

GERI WRIGHT 
MANAGING DIRECTOR

PRESENTS

MISS BENNET: CHRISTMAS AT PEMBERLEY

BY

LAUREN GUNDERSON & MARGOT MELCON

PRODUCTION STAGE MANAGER
GLENN BRUNER* 

ASST. STAGE MANAGER
MOLLIE HEIL 

SCENIC DESIGNER
APOLLO MARK WEAVER

COSTUME DESIGNER
LUX HAAC

LIGHTING DESIGNER
ELIZABETH HARPER

SOUND DESIGNER
KIARA JOHNSON 

DIALECT COACH
KEVIN BLACK 

DIRECTED BY
SEAN DANIELS 

MISS BENNET: CHRISTMAS AT PEMBERLEY was originally produced by Northlight Theatre, Chicago, Illinois
(BJ Jones, Artistic Director; Timothy Evans, Executive Director).

MISS BENNET: CHRISTMAS AT PEMBERLEY is presented by special arrangement with Dramatists Play Service, Inc., New York.

**Denotes members of Actors' Equity Association, the Union of Professional Actors and Stage Managers in the United States.*

INDIVIDUAL PRODUCTION SPONSOR: **SUSAN AND JEFFERY REIN**

2021/2022 SEASON SPONSOR: **I. MICHAEL AND BETH KASSER**



CAST

MARY BENNET..... JESSICA JAIN*
ARTHUR DE BOURGH..... SETH TUCKER*
ELIZABETH DARCY..... ALEXIS BRONKOVIC*
FITZWILLIAM DARCY..... JOHN PATRICK HAYDEN*
JANE BINGLEY..... SHONDA ROYALL*
CHARLES BINGLEY..... JOHN GREGORIO*
LYDIA WICKHAM..... ELENA LUCIA QUACH*
ANNE DE BOURGH..... VERONIKA DUERR*

**Denotes members of Actors' Equity Association, the Union of Professional Actors and Stage Managers in the United States.*

THERE WILL BE ONE 15 MINUTE INTERMISSION.

UNDERSTUDIES

MARY/ANNE.....CAMDEN STANKUS*
LYDIA/ELIZABETH/JANE.....MAIA BICKERSTAFF*
MALE SWING.....DANIEL ALTA MIRANO*



ARIZONA ARTISTS INITIATIVE ATC is committed to Arizona artists. From our staff who live in Arizona to create the productions you see to the artists who help create readings and other productions, Arizonans take a leading role in everything we do. In addition to everyone on the staff page, we note individual artists on shows who are from Arizona.

On this original Arizona Theatre Company production, the ATC Production Staff is responsible for scenic construction, costume construction, lighting, projections, sound, props, furniture, wigs, scene painting, and special effects.

To learn more about **MISS BENNET: CHRISTMAS AT PEMBERLEY**, please visit the Learning & Education page at atc.org for a comprehensive free Play Guide. The Play Guide contains historical information, cultural context, and more.

Cell phones and other devices that make a noise can greatly disturb your fellow audience members and the performers. PLEASE TURN THEM OFF before the performance.

Cover: Esser Design

Arizona Theatre Company operates under agreements between the League of Resident Theatres (LORT) and Actors' Equity Association, the Union of Professional Actors and Stage Managers in the United States; Stage Directors and Choreographers, an independent national labor union; and United Scenic Artists Local USA-829, IATSE.



The Actors and Stage Managers employed in these productions are members of Actors' Equity Association, the Union of Professional Actors and Stage Managers in the United States.



The Director is a member of the Stage Directors and Choreographers Society, an independent national labor union.



The Scenic, Costume, and Lighting Designers in LORT Theatres are represented by Union Scenic Artists Local USA-829, IATSE.



LETTER FROM THE KASSER FAMILY ARTISTIC DIRECTOR SEAN DANIELS



Part of my continual goal is to connect you (the audience) directly to our artists.

I want to connect you directly to **Lauren Gunderson**, one of my favorite writers, one of my favorite people, one of the reasons why I'm still working today. She is truly a force in the American Theatre, and I consider it one of our greatest triumphs that she now considers us home.

She writes the smartest, most complex women appearing on stages today and, because she's a true southerner, does it all with a level of charm that disarms even the hardest of hearts.

The idea, that through delight and her whip-smart writing, she is not only winning praise and awards – and hearts and minds – but sneakily educating theatre audiences everywhere is one of the most exciting things happening in our field.

What a joy it is to encounter her work and leave feeling like we have a bigger understanding of who we are as a people.

She's the type of artist you'll see more of at ATC – smart, successful, AND equal parts good egg. She's interested in community, in theatricality, in winning, and in YOU.

She's the future, and we're proud to call her one of our own.

Here's Lauren:



"The power of a story is more profound in its telling than in its imagining.

That's why I'm so excited to be a part of Sean's first season. The courage to put forth new stories of people like us and far from us, in triumph and in tragedy, stories that encourage us and challenge us, is the true work of this art form.

There is a kind of sacred work in the theater, but it only matters when it's shared. It's not something we get to keep to ourselves, it's not something that should look like anything we've seen before.

That's where theatres like Arizona Theatre Company come in, that's where audiences like you come in, that's where we all literally come in, sit together, and add to a story without our own wisdom and fear and history.

Theatre is something made by everyone who touches it.

So whether you're watching a play about someone who reminds you of yourself, or someone you've never even imagined meeting before, you're making the story more real and more necessary by your watching it.

Stories can tell the future if you let them.



LETTER FROM THE KASSER FAMILY ARTISTIC DIRECTOR SEAN DANIELS



Nardeep Khurmi, Veronika Duerr, Amelia White, Tori Grace Hines, and Inger Tudor in ATC's production of Lauren Gunderson's *Silent Sky*.

A better world, a more just world, a world where we laugh at the bad guys (or ourselves) and cheer the impossible victors (or ourselves)? Theatre can give us those realities before they're even realities.

So when Sean chooses stories that put women's stories up front in a world that usually doesn't; when he put artists of color and grace on stage in a country that usually assumes the worst of them, that give you the chance to laugh and hypocrisy and benevolence, both he and his audience are helping make that better world more real, even if it's through fiction.

Stories are only powerful if they're told.

Thank you for being a part of the telling.

Thank you for letting my story be a part of the lifted life we're all crafting through big art, brave congregation, and a collective, soaring imagination at Arizona Theatre Company."

— Lauren Gunderson

Sean Daniels
The Kasser Family Artistic Director



LETTER FROM MANAGING DIRECTOR GERI WRIGHT



Welcome to *Miss Bennet: Christmas at Pemberley*, full of wit and warm-spirited humor about the complexities of love and family. This year, *Christmas at Pemberley* also launches ATC's shift in the season as part of our new business model. Annually, we will produce a holiday show in November/December to spend time in the theatre together as a theatrical family during the holidays.

The Fall is my favorite time of the year. Yes, it is the ability to layer clothing, but it is a more profound and meaningful time of year for me personally.

It starts in late September when you step outside in the early morning and feel the change in the air. It is crisper – hinting at what is around the corner. October arrives along with “pumpkin spice everything,” and Christmas decorations are creeping into the store aisles. November brings in Thanksgiving as a second thought before the hustle and bustle of Christmas arrives. My Goddaughter, when she was younger, said, “Give the turkey’s a chance!” And I couldn’t agree more. Her young mind knew then that Thanksgiving – as important as it is – gets overlooked for the flashier Christmas.

Thanksgiving was my mother’s favorite holiday. The more the merrier; food, people, generosity, good cheer. The holiday was a time when she would invite whomever (familiar or not) to our house for the celebration. She believed that no one should be alone at this time of year and our house was always full of strangers – soon-to-be friends – who had no other place to go for the holiday. The Christmas music played, the oven was on, and the aromas floated throughout the house – all was right in the world.

Her generous and loving heart is the perfect meaning for my greeting today.

I want to suggest that we hold onto the holiday sentiment in our hearts for as long as possible. May the warmth and laughter you experience watching *Miss Bennet: Christmas in Pemberley* today remind you of the importance of being present with those close to you – and extend that warmth to those you do not yet know.

We are grateful that you are here to enjoy what we hope will be a holiday tradition for your family for years to come. And, if we hear you humming a holiday tune on your way out, we won’t judge.

Nothing but love here.

Happy Holidays!

Geri Wright
Managing Director

A wide, ornate border of floral and vine motifs surrounds the central text area. The border is composed of repeating patterns of leaves, flowers, and scrolling vines, creating a classic, elegant frame.

WHAT IS IT ABOUT JANE AUSTEN?

Is it the setting, England during the Regency, where a prince instead of a king ruled and empire waist dresses were introduced by another “Emma”?

Is it the language, where women speak up and men listen? Where irony and social commentary meld effortlessly together?

Is it characters like Elizabeth Bennet, Elinor Dashwood, Emma Woodhouse, and so many more women with a purpose and a determination to live their lives as they choose?

These are all superficial assumptions about why Jane Austen remains so popular nearly 200 years after her death. Maybe it is a combination of all of them, along with that “special sauce” of time and place that makes both Jane-ites and first-timers alike fall for her works. There are only six novels – *Sense and Sensibility* (1811), *Pride and Prejudice* (1813), *Mansfield Park* (1814), *Emma* (1815), *Northanger Abbey* (1818, posthumous), *Persuasion* (1818, posthumous), and *Lady Susan* (1871, posthumous) – but the number of adaptations (as well as works inspired by the framework Austen provided) for film, television, and stage make it seem as though there are so many more. Furthermore, her “sensibility” has inspired contemporary artists in all mediums – just look to the success of this summer’s *Bridgerton* as an example.

Scholars in all areas – history, literature, economics, sociology, and anthropology – have poured over Austen’s works, looking for clues about intention, what she thought of the world around her and what those words actually meant.

But at the end of the day, the subject at hand is THE STORY. What has delighted readers and viewers since her death has been the stories.

Will Emma's adventures ruin love for all with whom she comes in contact? Or will the Dashwood sisters balance sense with passion? So many questions!

One of the lingering questions that has intrigued readers and scholars alike at the end of *Pride and Prejudice* is exactly what happens to the Bennet family once the last lines are written. Austen gives us a bit about Lydia and Wickham, we have some clear resolution as to the happiness between Elizabeth and Darcy, and even a word or two about Lady Catherine. But Miss Mary Bennet? This is what Austen tells us:

Mary was the only daughter who remained at home; and she was necessarily drawn from the pursuit of accomplishments by Mrs. Bennet's being quite unable to sit alone. Mary was obliged to mix more with the world, but she could still moralize over every morning visit; and as she was no longer mortified by comparisons between her sisters' beauty and her own, it was suspected by her father that she submitted to the change without much reluctance.

And this is where Lauren Gunderson and Margot Melcon launch *Miss Bennet: Christmas at Pemberley*. Is Mary *really* no longer mortified by comparisons to her sisters' beauty? Does she *really* moralize over every morning visit? And the biggest question of all: is she *really* the only daughter who remains at home?

Like any exemplary historians, literary scholars, and anthropologists, Gunderson and Melcon plumb the text of *Pride and Prejudice* not only for its hidden secrets but for inspiration, as they place us squarely into a world of possibilities with their take on the "what happens next" questions of the Bennet sisters. With each emotional beat and turn of phrase, they pick up the pen left by Jane herself.

As you watch the whirlwind of comings and goings at Pemberley, recall that there are so many assumptions about meaning, characters, and place – and what a "Jane Austen" story is. Embrace these characters for who they are, celebrate a world of high stakes and low consequences, and smile with joy as the story after the story comes alive.



Jessica Jain (Mary Bennet) is thrilled to be making her Arizona Theatre Company debut and to be playing a beloved Bennet sister. She has spent much of her life manifesting becoming a Jane Austen heroine (She was Charlotte Lucas last time ... although I guess she's technically a Gunderson/Melcon heroine ... still counts). Favorite credits include *Pitch Perfect*, *Blue Bloods*, *The Who and the What*, *For Steve Wozniak on His 67th Birthday*, *The Last Word*, *The Metal Children*, *Pride and Prejudice*, and *Godspell*. Proud graduate of the Louisiana State M.F.A. acting program. Love to The Jains, her small brown dog, and her plants.



Seth Tucker 🌈 (Arthur de Bourgh) is a proud queer, Latinx, artistic entrepreneur, born and raised in Arizona. A graduate of ASU with degrees in Music Theatre and Business Marketing, Seth has performed, produced, and directed all around the Valley. Favorite acting credits: Jacob in *La Cage Aux Folles* (ABT), Charlotte et al. in *I Am My Own Wife* (BLK BOX PHX), Leo Frank in *Parade* (ART & Mesa Outback Theatre, AriZoni Nomination), Leaf Coneybear in *The 25th Annual Putnam County Spelling Bee* (PTC & Beef and Board Theatre, AriZoni Award & Encore Awards winner), David in *Santaland Diaries* (ABT & FUSE), Emcee in *Cabaret* (FUSE), Miss West Coast in *Pageant* (ABT & Off-Broadway, Original Cast

Recording), and Marcus in *Murder For Two* (PTC). Seth is an active member of AEA and sits on the board of UCAT, Arizona's newest BIPOC-focused theatre organization. Much love to my supportive family and to my gorgeous, talented, kind husband. SethATucker.com

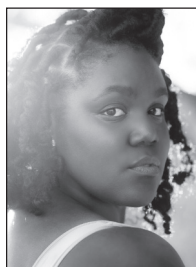


Alexis Bronkovic (Elizabeth Darcy) Broadway/ New York: *The Big Broadcast*, The Barrow Group Theatre; *Tiny Geniuses*, Fringe NYC at the Here Arts Center. Regional: *Born Yesterday* (Billie Dawn), The Guthrie Theatre, *Silent Sky* (Henrietta Leavitt), earned Best Actress IRNE nomination, *The Wickhams: Christmas at Pemberley* (Elizabeth Darcy), *Miss Bennet: Christmas at Pemberley* (Elizabeth Darcy), Merrimack Repertory Theatre; *Amadeus* (Constance), Maltz Jupiter Theatre, *A Christmas Carol* (Belle), Actors Theatre of Louisville, *Postwave Spectacular*, *Heist*, Humana Festival ATL. Web-series: *2Some*, *Rainbow Ruthie*. TV: *Law & Order SVU*, *FBI: Most Wanted*, *Blacklist*, *Younger*, *The Affair*, *Royal Pains*, *Blue Bloods*. Film: *Oleander*, *Jimmy & Don*, *Veritaphobia*, *On Settling Down*, *Julia*. Education: BA Theatre Performance from Marymount Manhattan College, Actor's Theatre of Louisville Apprentice Company Alum. Other: Alexis is thrilled and grateful to be making her Arizona Theatre Company debut. As always, much love and thanks to her "Rats" and also to her on and off stage Mr Darcy.



John Patrick Hayden (Fitzwilliam Darcy) is thrilled to be part of ATC. Happy holidays, Everyone! Acting credits at many regional theaters including the Guthrie, Hartford Stage, Center Stage and the Denver Center. He was

on Broadway with the Roundabout Theatre Company's production of *Tartuffe*. Off-Broadway with the Lincoln Center in *FLY*. TV Credits: *Blindspot*, *Younger*, *Law and Order*, *Blue Bloods*, *Chicago Fire*, *I Love You but I Lied*, and playing "Battlin' Jack" in Marvel's *Daredevil* on Netflix. He won a Best Actor award for his role in the short film *Doorstep*. As a filmmaker (writer/director), he was awarded a student BAFTA and the Princess Grace nominee for his short films. BFA Acting FSU, MFA in Directing Film CCNY. Love to Mrs. Fire Tiger. AND thank you to his awesome agents at KMR, NY and Mr. Maihack, his manager at 44West!



Shonda Royall 🌟 (Jane Bingley) is an actress who hails from the Windy City of Chicago. Shonda studied Theatre at Chicago State University, where she received her BFA. Now an Arizona resident, Shonda has worked with the 24

Hour Plays, performing a newly crafted monologue, *Battle Royall*. She was also a part of the SAI Production Virtual Theater in *All The Wrong Places*. Most recently, Shonda was cast in Virtual Theatre of Arizona's production *American Folklore*, an endurance theatre piece that ran for six hours straight. Now Shonda is excited and grateful to join this wonderful ensemble for *Miss Bennet: Christmas at Pemberley*.



John Gregorio (Charles Bingley) John Gregorio is pleased to be making his Arizona Theatre Company debut with *Miss Bennet*. Some of his credits include Off-Broadway: *Around the World in 80 Days* (The New Theatre @ 45th St),

Silent Laughter (The Lamb's Theatre), *The Nuclear Family* (founder/performer The Belt Theatre). Regional: *The Steadfast Tin Soldier* (Lookingglass Theatre Co.), *The Villain Supper Club* (Merrimack Repertory), *The Royale* (Milwaukee Repertory), *The 39 Steps* (Geva Theatre Center), *A Christmas Carol* (Actors Theatre of Louisville), *A Funny Thing Happened on the Way to the Forum* (North Shore Music Theatre), *The Legend of Pecos Bill* (Alliance Theatre), *The Mystery of Irma Vep* (Dad's Garage Theatre Company). John is a founding member of Dad's Garage Theatre Company (Atlanta 1995 – present), the long-running Off-Broadway musical improvisation company The Nuclear Family (New York City 2001 - 2012), and currently a communications faculty member of the Heifetz International Music Institute.



Elena Lucia Quach 🌟 (Lydia Wickham) is thrilled to be making her Arizona Theatre Company debut! Elena is a Tucson, Arizona, native, classically trained ballet and modern dancer, and received training from Ballet

Arts/Ballet Tucson under the direction of Mary Beth Cabana in Tucson, and Alvin Ailey American Dance Theater in New York City. She has recently trained in the American Ballet Theater teacher-training program and is currently teaching dance and arts integration at Utterback

Middle School with the OMA program at Tucson Unified School District. She is a newcomer to the theater, but her favorite credits include Choreographer/Principal Dancer in *Sweeney Todd*, Girl in *The Big Meal*, The Mute in *The Fantasticks*, and Laurie in a recent reading of Elaine Romero's *Wetback*. Elena would like to thank her husband Josh and four-year-old Pokémon trainer Evangeline for their never ending love and support. @breadgeniequach



Veronika Duerr 🌟 (Anne de Bourgh) is ecstatic to return to ATC after previously appearing in our production of *Silent Sky*. She graduated from the Savannah College of Art and Design with a BFA in Theater. She has been a member of Actors-

Equity for 15 years and has worked as a freelance actor, director, and producer in Atlanta, Los Angeles, New York City, Boston, and Arizona. This show marks her fifth Lauren Gunderson production. Her favorite roles include Henrietta in *Silent Sky* (Arizona Theatre Company), Vanda in *Venus in Fur* (Actor's Express), Lurlene in *The Tall Girls* (Alliance Theatre), and Zoë in *Ripe Frenzy* (New Rep Theatre). But in all honesty, her most cherished roles are wife to her best friend and mother to her incredible three-year-old daughter.

Sean Daniels 🌟 (Director) has previously directed at ATC (*My 80-Year-Old Boyfriend*), at Manhattan Theatre Club (*The Lion*, Drama Desk Award & Theatre World Award, nominated for Lucille Lortel and Outer Critics Circle), 59e59 (NYC, *I and You*, nominated for Outer Critics Circle), the Lynn Redgrave (NYC), The Kennedy Center (Washington, D.C.), the St. James (West End, London - *The Lion*, winner of Best New Musical), and at many wonderful regionals (Old Globe, ACT,

Geffen, Cleveland Playhouse, Milwaukee Rep, Long Wharf, Alliance, and the Neo-Futurists in Chicago!). In addition, Sean has been an Artistic Director at Merrimack Repertory and Dad's Garage (which he co-founded), and an Associate Artistic Director at California Shakespeare Theatre and Actors Theatre of Louisville. (See complete biography on page 13).

Glenn Bruner 🌟 (Production Stage Manager) is in his 24th season at ATC, where he has stage-managed over 70 productions, including *"Master Harold"...and the Boys*, *Silent Sky*, *Two Trains Running*, *Erma Bombeck: At Wit's End*, *The Diary of Anne Frank*, *Outside Mullingar*, *Chapter Two*, *La Esquinita USA*, *An Act of God*, and *Of Mice and Men*. Mr. Bruner has worked at Studio Arena Theatre, Dallas Theater Center, Baltimore Center Stage, The Alley Theatre, and Seattle Rep. He was the first ASM for the world premiere of *On The Waterfront* at Cleveland Play House, and stage-managed the Off-Broadway premiere of Alan Ayckbourn's *Season's Greetings*. He has been the voice for many radio and television commercials and worked on-air for Texas Public Radio in his hometown of San Antonio. For the past 21 summers, Mr. Bruner has been a member of the entertainment production staff for Major League Baseball's All Star FanFest/Play Ball Park. He was the 2012 recipient of the Lucy Jordan Recognition Award, presented annually by the Western Region of Actors' Equity Association. He has been a member of AEA since 1981.

Mollie Heil 🌟 (Assistant Stage Manager) is so glad to be back at ATC and working in Arizona! Favorite credits include: PSM, *American Idiot* and *The Mountaintop*; ASM, *Kinky Boots* (Weathervane Theatre), PSM, *Bright Star* and *Photograph 51*; ASM, *[title of show]* (Webster University), and PA, *The Marvelous Wonderettes* (Repertory Theatre of St. Louis). Mollie received her BFA in Stage Management from The Conservatory of Theatre Arts at Webster University and is a proud new AEA member. Much love

and thanks to her parents, Mimi, her 3 younger siblings, and her best friends. mollieheil.com

Apollo Mark Weaver (Scenic Designer) is thrilled to be working at ATC for the first time, having worked previously with Sean on the world premieres of *Slow Food*, *The Villains' Supper Club*, and *The Making of a Great Moment* at Merrimack Repertory Theatre and *Tinker to Evers to Chance* at Geva Theatre. Other credits include *Pericles*, *Richard III*, *Comedy of Errors*, *The Book of Will*, *Macbeth*, *Twelfth Night*, *Merchant of Venice*, *Merry Wives of Windsor*, and *Henry VI Part 1* at Utah Shakespeare Festival; *The Wickhams: Christmas at Pemberley* at Merrimack Rep; *Moth*, *Shitheads*, and *The Gap* with Azuka Theatre; *Hype Man* with InterAct Theatre Company; *Romeo and Juliet* at Redhouse Arts Center; and *The Monster In the Hall* with Inis Nua Theatre Company. He is a proud member of United Scenic Artists Local 829 and teaches design at Utah Valley University. Please visit him on the web at www.apolloweaver.com.

Lux Haac (Costume Designer) is a New York-based costume designer working in theatre, film, opera, and dance. Recent New York credits: *Eureka Day* (Colt Coeur/Walkerspace), *Ajijaak on Turtle Island* (IBEX Puppetry/New Victory Theater), and *R+J* (Hypokrit Theatre Company/Access Theater). Recent Regional and other theatre credits: *I and You*, *Annapurna* (Syracuse Stage), *The Thanksgiving Play* (Repertory Theatre of St Louis), *Hear Me Say My Name* (Discovery Theater/National Museum of the American Indian), *Ragtime* (PlayMakers Repertory Company), *Between Two Knees* (Oregon Shakespeare Festival), *Native Gardens* (Syracuse Stage, Geva Theatre Center, Portland Center Stage), and *Well Intentioned White People* (Barrington Stage Company). Member of USA 829. MFA: NYU/Tisch. luxhaac.com

Elizabeth Harper (Lighting Designer) Theatrical credits include: *Between Two Knees* (Oregon

Shakespeare Festival), *Immediate Family*, and *Ma Rainey's Black Bottom* directed by Phyllicia Rashad (Mark Taper Forum), *The Cake* (La Jolla Playhouse), *Office Hour* starring Sandra Oh (South Coast Rep), *Mysterious Circumstances*, shortlisted for the Knights of Illumination Award, *Sell/Buy/Date*, written and performed by Tony-Award winner Sarah Jones, *Wait Until Dark*, *Bad Jews*, and *Play Dead*, directed by Teller of Penn and Teller (The Geffen Playhouse), *Indecent* (Denver Center for the Performing Arts), *Good Boys* and *The Father* starring Alfred Molina (Pasadena Playhouse), *Crescent City* (The Industry Opera Company), *Quack and Throw Me on the Burnpile* and *Light Me Up* written and performed by Academy Award-winner Lucy Alibar (The Kirk Douglas Theatre), *Rock of Ages* (Seattle's 5th Avenue Theatre), *The Invisible Hand* (Kansas City Rep). Corporate and television credits include HBO's *Silicon Valley* and events for Ubisoft, Under Armour, Microsoft, and Asics. Elizabeth is a professor of lighting design at the University of Southern California.

Kiara Johnson 🌟 (Sound Designer) ATC: debut. Recent: Metropolitan Ensemble Theatre: *In Just My Underwear* (Debut of Original Composition). Arizona Repertory Theatre: *Proof*, and *Reckless*. Kiara is currently the Assistant Technical Director for the Fred Fox School of Music at The University of Arizona.

Kevin Black 🌟 (Dialect Coach) is a Professor of Practice in Acting, teaching Acting I and II, Introduction to Voice and Movement, and Screen Acting. He is a professional actor with more than thirty-five years' experience, spanning regional and New York theatre and independent and studio film. He has acted at companies such as The New York Shakespeare Festival, The Shakespeare Theatre at the Folger, Primary Stages, The Pearl Theatre Company, Theatre for a New Audience, Laguna Playhouse, and Arizona Theatre Company, and he has appeared in films selected for the Sundance Film Festival, the San Francisco

International Film Festival, the Seattle International Film Festival, and the Venice Film Festival. In addition to acting, he coaches speech and dialects, and directs and produces theatre, film, and dance projects.

Lauren Gunderson (Playwright) was the most produced playwright in America during the 2017/18 season, two-time winner of the Steinberg/ATCA New Play Award, and winner of the Lanford Wilson Award and the Otis Guernsey New Voices Award. She is also a finalist for the Susan Smith Blackburn Prize and John Gassner Award for Playwriting, and a recipient of the Mellon Foundation's three-Year Residency with Marin Theatre Company. She studied Southern Literature and Drama at Emory University and Dramatic Writing at NYU's Tisch School, where she was a Reynolds Fellow in Social Entrepreneurship. Her work has been commissioned, produced, and developed at companies across the US, including South Coast Rep, The Kennedy Center, Oregon Shakespeare Festival, The O'Neill, The Denver Center, San Francisco Playhouse, Marin Theatre, Synchronicity, Berkeley Rep, Shotgun Players, TheatreWorks, Crowded Fire, and more. She will soon be seen in London with Hampstead Theatre's production of *I and You* in Fall 2018. She co-authored *Miss Bennet: Christmas at Pemberley* with Margot Melcon, which was one of the most produced plays in America in 2017. Her work is published at Playscripts (*I and You*; *Exit Pursued By A Bear*; *The Taming and Toil And Trouble*), Dramatists Play Service (*The Revolutionists*; *The Book of Will*; *Silent Sky*; *Bauer* and *Miss Bennet*) and Samuel French (*Emilie*). Her picture book *Dr Wonderfuf: Blast Off to the Moon* was released from Two Lions/Amazon in 2017.

Margot Melcon (Playwright) is an artist, arts administrator, and writer. She co-wrote *Miss Bennet*

and *The Wickhams* with Lauren Gunderson, the first two parts of the *Christmas at Pemberley* trilogy. She was the Director of New Play Development at Marin Theatre Company for seven years, where she dramaturged over 30 productions - including six world premieres - and administered the company's two annual new play prizes and commissioning program. She has developed plays with TheatreWorks, Bay Area Playwrights Festival, Crowded Fire Theater, Shotgun Players, Berkeley Rep's Ground Floor, the Kennedy Center, the New Harmony Project, and The Playwrights' Center in Minneapolis. She currently manages arts and culture grantmaking at the Zellerbach Family Foundation. Margot is a graduate of California State University, Chico and currently lives in San Francisco.

Camden Stankus 🌟 (Understudy, Mary/Anne) is absolutely thrilled to be involved in her first ATC production! Originally from Ft. Lauderdale, Florida, she is currently pursuing her BFA in Acting at the University of Arizona. Cami would like to thank her family, friends, and everyone at ATC for being so kind and welcoming.

Maia Bickerstaff 🌟 (Understudy, Lydia/Elizabeth/Jane) is a senior at the University of Arizona working towards her BFA in acting. She is thrilled to be working with Arizona Theatre Company. She is grateful for her friends and family supporting her throughout all her artistic endeavors.

Daniel Alta Mirano 🌟 (male swing) is a BFA Senior Musical Theatre Major at the University of Arizona. He was recently in the productions of *Next to Normal* as Henry at SAPAC and "Still Standing" a Pop/Rock Review at the Arizona Repertoire Theatre. He would love to thank Arizona Theatre Company and this amazing cast for giving him the awesome opportunity to learn and grow as an actor.



EXECUTIVE LEADERSHIP

Sean Daniels 🌟 is honored to be The Kasser Family Artistic Director at ATC, where he first fell in love with theatre.

An internationally known theater director, writer, and Artistic Director, Sean is known for new work and innovative community-engaged leadership. He's been a *New York Times* Critic Pick as a director and a writer.

Sean has directed at ATC (*My 80-Year-Old Boyfriend*), at Manhattan Theatre Club (*The Lion*, Drama Desk Award & Theatre World Award, nominated for Lucille Lortel and Outer Critics Circle), 59e59 (NYC, *I and You*, nominated for Outer Critics Circle), the Lynn Redgrave (NYC), The Kennedy Center (Washington, D.C.), the St. James (West End, London - *The Lion*, winner of Best New Musical), and at many wonderful regionals (Old Globe, ACT, Geffen, Cleveland Playhouse, Milwaukee Rep, Long Wharf, Alliance, and the Neo-Futurists in Chicago!).

In addition, Sean has been an Artistic Director at Merrimack Repertory and Dad's Garage (which he co-founded), and an Associate Artistic Director at California Shakespeare Theatre and Actors Theatre of Louisville.

Sean has been named "one of the top fifteen up & coming artists in the U.S., whose work will be transforming America's stages for decades to come" & "One Of 7 People Reshaping And Revitalizing The American Musical" by *American Theatre* magazine.

As a playwright, his work has been produced in multiple theaters throughout the country including a commercial Off-Broadway run of his sober dark comedy *The White Chip*, which was produced by Tony Award winner Tom Kirdahy. It is currently being adapted for a book and for TV.

He'd love to hear from you.

sdaniels@atc.org

twitter: @seandaniels

Geri Wright 🌟 returned to ATC in January 2020 as ATC Managing Director. Her love of theatre started at Radio City Music Hall in New York City on a school field trip and has grown into a passion for the arts today. Having served in leadership roles at the Heard Museum, American Red Cross, Arizona Theatre Company and most recently as CEO of Act One, Geri has been a passionate advocate for the importance that the arts play in creating healthy and prosperous communities. With more than 25 years in nonprofit management and fundraising experience, she is thrilled to be able to put those skills to use in serving our state theatre. In 2019, Geri was recognized as one of the Outstanding Women in Business by the *Phoenix Business Journal* and has been honored with an assortment of acknowledgments for her work in the charitable community. Geri and her family, along with two horses and an Australian cattle dog, reside at the base of the McDowell Mountains.



UPCOMING ARTIST SPOTLIGHT



Connie Furr



Connie Furr's design for *A Fashion A'Fare - In Full Bloom*, a celebration of the Scottsdale Fashion Square's luxury expansion

CONNIE FURR COSTUME DESIGNER FOR

WOMEN IN *Jeopardy!*



Hello there,

I am Chanel Bragg, Associate Artistic Director for Arizona Theatre Company, and I would like to personally thank you for joining us for this fantastic production of *Miss Bennet: Christmas at Pemberley*. Your attendance and generous support of your state theatre is sincerely appreciated.

As we voyage into rehearsals for the next show in our 54th season, we are delighted to feature another Valley favorite none other, than Arizona State University professor (and award-winning design extraordinaire) Connie Furr in this long-awaited edition of the "Upcoming Artist Spotlight." Originally slated as a highlight in our *Georgia McBride* program guide, Arizona Theatre Company is ecstatic to take this moment to feature the local design staple as our costume designer for *Women in Jeopardy!*.

Connie's iconic designs have been featured in over 300 productions and can be appreciated both domestically and internationally. Her ability to make decadent costumes come to life is a rare specialty which landed her authorized rights from the Liberace Foundation to write the book titled, "Liberace Extravaganza!". I know firsthand how beautiful, detailed, and meticulous her designs are. (I was lucky enough to adorn her fabulous



Childsplay's *The Sun Serpent*. Costumes by Connie Furr.



Renderings of Connie Furr's costume designs for Childsplay's production of *The Sun Serpent*.

creations in Childsplay's production of *Good Night Moon*).

Last spring, our artistic team had an opportunity to interview the designer about her work. Here's what she shared.

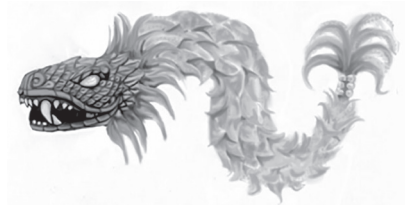
Q: Why have you chosen to live and work in Arizona for the past 20 years?

A: It's a rich community of artists and institutions. I've had the good fortune of working with Childsplay, Phoenix Theatre, Actors Theatre of Phoenix, when it was here, and now ATC. I'm thrilled to be part of it. It is a large community of intensely creative people and there is a pride here. At ASU, for example, we try to focus on local stories and politically inspired productions to forward the mission of making art more accessible to all.

President Crow at ASU's New American University talks about the success of an institution being not in who you exclude but who you include. I think the arts and institutions in Arizona are passionate about that.



Childsplay's *The Sun Serpent*. Costumes by Connie Furr.



Renderings of Connie Furr's costume designs for Childsplay's production of *The Sun Serpent*.

Q: How do you approach your work?

A: I tend to do a lot of premieres and I think that is indicative of my character. I'm easy-going and flexible, which is important because the scripts for new works change rapidly. I also love theatricality and the use of imagination. A great example of that was my work in Childsplay's *The Sun Serpent* directed by Rachel Bowditch. With the use of masks, actors transformed themselves into many different characters in a really exciting way.

Q: What do you see as the future of Arizona theatre and art?

A: I think the path we are on is exciting. The way artistic directors and directors of institutions are reacting to what is happening in the world is amazing, and I look forward to seeing and being part of that. I've been in this industry for 40 years. The companies in town are all in the trenches together producing art. When it all comes together in a beautifully cohesive production, it is immensely fulfilling. I feel very fortunate to be here.

Likewise, ATC is fortunate to have Connie and we are excited to share her designs in our production of *Women In Jeopardy!*.



JANUARY 15 - FEBRUARY 05

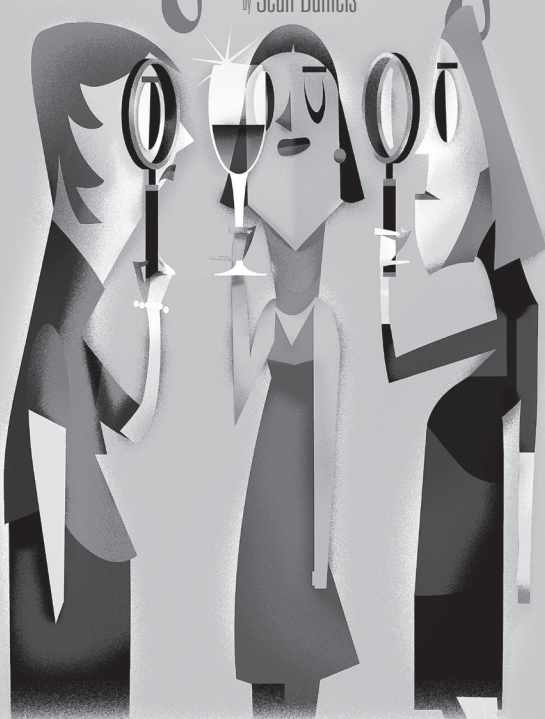
"The laughs in Wendy MacLeod's play ... come fast and furious. ... It's all good, silly fun, directed with precise comic timing by the seasoned Sean Daniels. ... a new work that's modern, lively, and loads of fun."

- *The Boston Globe*

By Wendy MacLeod

WOMEN IN Jeopardy!

Directed by Sean Daniels



WOMEN IN JEOPARDY!

BY **Wendy MacLeod**

DIRECTED BY **Sean Daniels**

A RIOTOUS COMEDY!

**Screw the mid-life crisis;
let's solve some crimes!**

Liz's best friends want her to be happy, but the dentist she's smitten with is just plain creepy. And they can't help but wonder if he may be a serial killer. When he is linked to a mysterious disappearance, they turn their book club into a mash-up of *Nancy Drew*, *Murder She Wrote*, and *Sex and the City*. This hilarious comedy reminds us about the value of friendship and the potential value of trading in wine glasses for spy glasses when the mid-life crisis just isn't your speed.

FUN FACT:

Wendy MacLeod is an accomplished writer in addition to being an award-winning playwright. Her prose and humor pieces have appeared in *Poetry Magazine*, *The New York Times*, *Salon*, *The Washington Post* and NPR's *All Things Considered*.

ATC.ORG / 833-ATC-SEAT

ATC AT THE TEMPLE OF MUSIC AND ART 330 S. SCOTT AVE. TUCSON



CORPORATE, FOUNDATION, AND GOVERNMENT PARTNERS

Our work is made possible due to the generosity of many corporations, foundations and government supporters. Through these partnerships, we can maintain a standard of artistic excellence while providing greater access to all.

List reflects donations made July 1, 2020 to September 30, 2021

2021/2022 SEASON SPONSORS: **I. MICHAEL AND BETH KASSER**

SPOTLIGHT CIRCLE

\$25,000+

Anonymous
Arizona Commission on the Arts
Arts Foundation for Tucson
and Southern Arizona
Gammage & Burnham
The Herberger Foundation
The Connie Hillman Family Foundation
LAVIDGE
Lewis Roca
The David C. and Lura M. Lovell Foundation
The Margaret E. Mooney Foundation
Phoenix Office of Arts and Culture
SRP
The Stonewall Foundation
The Shubert Foundation
U.S. Small Business Administration

ARTISTIC DIRECTOR'S CIRCLE

\$10,000 - \$24,999

Ameriprise Financial
APS
Cox Charities at Arizona
Community Foundation
Flinn Foundation
The H.S. Lopez Family Foundation
National Endowment for the Arts
Network for Good
UnitedHealthcare

PRODUCER'S CIRCLE

\$5,000 to \$9,999

Community Foundation for
Southern Arizona
The Blackburn Giving Fund
Diamond Family Philanthropies
Margaret T. Morris Foundation
The John and Helen Murphey Foundation
Tito's Handmade Vodka
Union Pacific Foundation

DIRECTOR'S CIRCLE

\$3,000 to \$4,999

The Downtown Clifton Hotel Tucson

OPENING NIGHT CIRCLE

\$2,500 to \$2,999

Applied Materials Foundation
Tucson Desert Song Festival

DESIGNER'S CIRCLE

\$2,000 to \$2,499

Cushman & Wakefield | PICOR
Commercial Real Estate Services
Downtown Development
Corporation of Tucson
Leonard J. and Irene Brown
Foundation, Inc.
PICOR Charitable Foundation
The Stocker Foundation

INSIDER

\$1,000 - \$1,999

The Benevity Community Impact Fund
Corporate Concierge Services Inc
Friedel Family Foundation
Long Realty Cares Foundation
Scottsdale Fashion Square
Snell & Wilmer L.L.P
Southern Arizona Anesthesia

PATRON

\$500 - \$999

The Gertrude and Charles
Gordon Foundation
TIAA-CREF
Texas Instruments Foundation
Vanguard Charitable

FRIEND

\$250 - \$499

Actor's Equity Foundation
Baird Foundation
Boeing Matching Gift Program
Farmers Home Fire Insurance Co.
HSSM - C12 Greater Phoenix
IBM Matching Grants Program
Johnson & Johnson Matching Gifts Program
The 24 Hour Company
UBS Wealth Management





DONOR ADVISED FUNDS

Ken and Kelley Abrahams
Charitable Fund at The
American Gift Fund

Audrey and Dan Abrams
Charitable Fund at
Schwab Charitable

Fischman Memorial
Endowment Fund of
the Jewish Community
Foundation of
Southern Arizona

Anonymous Funds held at
Community Foundation
for Southern Arizona

Mary and Cameron Artigue
Charitable Fund at
Schwab Charitable

Daniel Asia Donor Advised Fund
at Renaissance Charitable

BB2 Donor Advised Fund held at
the Community Foundation
for Southern Arizona

Berg Charitable Gift
Donor Advised Fund at
Fidelity Charitable

Jeffrey F Berg and Debra H
Paget Fund of the Cornell
University Foundation

BABAM Fund at Vanguard
Charitable Circle Renewal
included is \$1K seat
plaque purchase.

John and Susan Bowers
Charitable Gift Fund
at Schwab

Francis Chapin Foundation
Philanthropic Fund of
United Way of Tucson
and Southern Arizona

Charitable Contributions
for Improving Quality of
Life Donor Advised Fund
at Fidelity Charitable

Amy Charles and Steven
McMillan Donor Advised
Fund of the Jewish
Community Foundation
of Southern Arizona

Dennis and Marla Daugherty
Charitable Fund at Schwab

Bill and Donna Dehn
Charitable Fund of the Ayco
Charitable Foundation

Diamond Family Philanthropic
Fund of the Jewish
Community Foundation
of Southern Arizona

Chris and Carol Dubrowski
Charitable Fund at
Schwab Charitable

Seth and Rosalind Eisner Fund
at the Jewish Federation
of Metropolitan Chicago

Engels-Medland Fund held
at Fidelity Charitable

Flatt Family Fund held
at Arizona Community
Foundation

Joanie Flatt Family
Foundation at Arizona
Community Foundation

Michael Flatt Charitable
Fund held at Arizona
Community Foundation

Fridley Family Charity Fund
at Vanguard Charitable

Edward and Lauralyn
Gesten Family Foundation
at Morgan Stanley

Gissing GABE Group Fund at
Vanguard Charitable

Robert and Laurie Kaye
Glaser Donor Advised
Fund at The Jewish
Community Foundation
of Southern Arizona

Thomas Godfrey Charitable
Fund held at Fidelity
Charitable

Debbie Goodman and Patrick
Butler Donor Advised Fund
at Schwab Charitable

Gordon Family Fund at
Fidelity Charitable

Loring and Susan Green
Charitable Trust at
Fidelity Charitable

Greenleaf/Molberg Family
Fund at Schwab Charitable

Guilfooy Family Fund at
Schwab Charitable

Anne and David Hameroff
Donor Advised Fund
held at Jewish
Community Foundation
of Southern Arizona

Hazan Family Donor Advised
fund held at Jewish
Community Foundation
of Southern Arizona

Margaret M. Hitchcock
Fund at The New York
Community Trust

Holsclaw Advisory
Endowment Fund held at
Community Foundation
of Southern Arizona

Ide Family Charitable Trust
at Fidelity Charitable

S & J Jankowski Giving Fund
at Fidelity Charitable

Mack Jones Donor Advised
Fund at Schwab Charitable

Karcis and Seward Giving
Fund at Fidelity Charitable

Carolyn Kinney Donor Advised
Fund at Schwab Charitable

Carol and Foster Kivel
Family Fund held at the
Community Foundation
for Southern Arizona

Alvin and Janice Kivel
Philanthropic Fund of
the Jewish Community
Foundation of
Southern Arizona

Norm and Teri Klein
Donor Advised Fund at
Schwab Charitable

Harris and Lebel Donor Advised
Fund at Schwab Charitable

Robert B. Leff and Janice
M. Leff Fund at Arizona
Community Foundation

Bertie and Jack Levkowitz
Donor Advised Fund
held at Jewish
Community Foundation
of Southern Arizona

Jackie McElroy-Edwards
Charitable Fund at
Vanguard Charitable

George and Eleanor
Mink Family Fund at
Schwab Charitable

Gerry and Peggy Murphy Gift
Fund at Fidelity Charitable

Patrick J. O'Leary Foundation
at Fidelity Charitable

John and Libby Oswalt
Memorial Fund at
Vanguard Charitable

Denise Pappas Fund held
at Fidelity Charitable

Pozarsky/Riley Charitable
Fund at Fidelity

Rein Family Fund at
Schwab Charitable

Reynolds Family Fund for
Charitable Giving at
Fidelity Charitable

Riegger Charitable Fund at
National Philanthropic Trust

Roehrick Family Fund at
Fidelity Charitable

Rotkis Charitable Fund at
Schwab Charitable

RW/JM Charitable Trust at
Fidelity Charitable

Samuel Denmark Family Fund
held at Fidelity Charitable

Brian and Lisa Scott
Donor Advised Fund at
Fidelity Charitable

Morton and Arlene
Sculpt Designated
Fund of the Jewish
Community Foundation
of Greater Phoenix

Lex and Carol Sears Donor
Advised Fund of the Jewish
Community Foundation

Seiden Family Foundation
at Arizona Community
Foundation

Sol and Susan Shatz
Charitable Gift Account
at Morgan Stanley



DONOR ADVISED FUNDS

Shirley Family Charitable Fund
at Fidelity Charitable

Daniel J. and Evelyn G. Simon
Donor Advised Fund of
the Jewish Community
Foundation of Greater Phoenix

Adam F. and Celia Staperfene
Charitable Fund at
Schwab Charitable

Dinah Stecki Donor Advised Fund
held at Schwab Charitable

Jerry and Gerry Tamm
Donor Advised Fund at
Fidelity Charitable

Tancer Family Fund at Arizona
Community Foundation

Tyler and Marcia Tingley
Donor Advised Fund at
Fidelity Charitable

Topaz Fund held at the
Community Foundation
for Southern Arizona

Jerry and Joan Vandervoort
Donor Advised Fund at
Schwab Charitable

Elliott and Wendy Weiss
Charitable Gift Fund at
Schwab Charitable

James D. Wezelman Donor
Advised Fund at the Jewish
Community Foundation
of Southern Arizona

Janice Wezelman and David
Bartlett Donor Advised
Fund of the Jewish
Community Foundation
of Southern Arizona

Bert Whitehead Charitable Gift
Fund at Schwab Charitable

Zimmermann Family Fund
at Fidelity Charitable



THE OFFICIAL ATC PODCAST

Podcast Episodes Available on
Facebook • Spotify • Apple Podcasts and atc.org



FEBRUARY 26 - MARCH 19

"A remarkable show in many ways — it is totally different from any revue you ever saw and ... it catches one of the great thinkers, activists and musicians of the 20th century as she surely was feeling in that given moment in time."

— Chicago Tribune

NINA SIMONE:

Four Women

By Christina Ham

Directed by Tiffany Nichole Greene

PRODUCTION SPONSOR
MARGARET E. MOONEY FOUNDATION



ATC IS PROUD TO BE PART OF THE TUCSON DESERT SONG FESTIVAL

ATC.ORG / 833-ATC-SEAT

ATC AT THE TEMPLE OF MUSIC AND ART 330 S. SCOTT AVE. TUCSON



INDIVIDUAL DONORS

Our work is made possible due to the generosity of many individual supporters.
With the gifts from the following donors, we can maintain a standard
of excellence while providing access to all.

List reflects donations made July 1, 2020 to September 30, 2021

SPOTLIGHT CIRCLE

\$25,000+

Paul and Alice Baker
Laura and Michael
DiChristofano
Shirley Estes
Michael O. Flatt
Rob and Laurie Glaser
Anne and Douglas Holsclaw
I. Michael and Beth Kasser
Kay and Walter Oliver
Susan and Jeffrey Rein
Richard Stahl

ARTISTIC DIRECTOR'S CIRCLE

\$10,000 - \$24,999

Anonymous
Char and Alan Augenstein
Christine and John Augustine
Mary Jan and Paul Bancroft
Patricia Engels and
Dick Medland
Deanna Evenchik-Brav
and Garry Brav
Joanie Flatt
Barb and Ted Frohling
Dr. Mary Jo Ghory
Jay Glaser
Edna Gray
Jeff Guldner and Sydney Reed
Courtney Johnson
Juliana Kasper
Bill Lewis and Rick Underwood
Jack and Becky Moseley
Patrick J. O'Leary and
Karen Yamasaki
Mary and Matthew Palenica
Mary Beth and Gerald Radke
Enid and Michael Seiden
Janie Shapiro and
Slobodan Popovic
Jean and Fred Shaulis
Elizabeth B Smith

Nancy Swanson
Emily and Bob Vincent
Michael Willoughby

PRODUCER'S CIRCLE

\$5,000 to \$9,999

Anonymous
Lyn Ashton and Herbert
Stevenson
A. Frederick Banfield and
Eileen M. Fitzmaurice
Kelly Barr
Judie Cosentino
Bill and Donna Dehn
Bruce L. and Lynne
Wood Dusenberry
Linda Fulgenzi
Gail and Patric Giclas
Bruce and Edythe Gissing
Davie Glaser
Nora Hannah and
David Duntelman
Stephen and Amanda Heitz
Bob and JoAnne Hungate
Gary Jackson and Oscar
De La Salas
Teri and Norman Klein
Lori Mackstaller
Sandra Maxfield
Rosanna Miller
Peggy Murphy
Karen Peters and Chris Thomas
Carol and Lex Sears
Jacqueline Smith
Carolyn and John Stuart
Erica Stutman
Stephen and Susan Thompson
Nancy and Jeff Werner
Linda Wurzelbacher
Ruth Zales

DIRECTOR'S CIRCLE

\$3,000 to \$4,999

Anonymous
Kelley and Ken Abrahams

Barbara and Franklin Bennett
Denice Blake and
John Blackwell
Connie and Rodney Boorse
Ginny L. Clements
Arlene and Ed Cohen
Gloria and Phil Cowen
Ellyn and Jeff Gold
Ellen and David Goldstein
Sandy and Ed Holland
Mack Jones
Drs. Steven and Marta Ketchel
Patricia and Mark Landay
Marcia and Andrew Meyer
Caroline and Peter Morse
Trudi and Robert Murch
Mallory and Donald Riegger
Tom and Eileen Rotkis
Billy Russo and Richard Giuliani
Shoshana Tancer
Taryn and Mark Westergaard
James Wexelman and
Denise Grusin

OPENING NIGHT CIRCLE

\$2,500 to \$2,999

Mary and Cameron Artigue
Susan Call
Jacklyn Connoy and
William Maguire
Judy and Dave Crone
Leslie Dashew and
Jack Salisbury
Jonae and Don DeLong
Cindy Rankin and
Thomas Elliott
Norma and Stanley G. Feldman
Diane Fitzpatrick and
Roger Karber
Catherine "Rusty" Foley
Kathy Garrett
Becky and Dave Gaspar
Louise and Jim Glasser
Anne and David Hameroff
Jacqueline Hufford-Jensen
and Gregory Kroening

Leslie Hall and Ted Jarvi
Helen and Robert Jennette
Sandy and Richard Kauffman
Carol and Foster Kivel
Mary and Paul Koss
Sally and Richard Lehmann
Judy and Ken Ryan
Rita and Steven Schlosser
Trisa and Andrew Schorr
Tracy and Marc Schwimmer
Alla and Howard Steinberg
Bert Whitehead

DESIGNERS CIRCLE

\$2,500 to \$2,999

Anonymous
Corbett and Patricia Alley
Susan Berg
Betsy Bolding
Sandy and Chuck Bonstelle
Susan and Brian Boylan
Amy Charles and
Steve McMillan
Alicia and Jon Crumpton
Jackie and Tom Edwards
Paulette and Joe Gootter
Lauren and Michael Gordon
Dr. Robert W. Gore
Bruce Meyerson and
Michael Burns
Nathan Joseph
Philip Keller
Gloria and Jim Lawrence
Judy and Sam Linhart
Phil and Nora Mazur
Bruce Meyerson and
Mary Simonson
Marianne and Paul Pellegrino
Sandra Rausch
Brenda and Jim Rowland
Patricia and Robert Strickland
Lois and Maurice Tatelman
Mary and Bill Way
Janet and Barry Winkler

INSIDER

\$1,000 - \$1,999

Anonymous (5)
Judy Ackerman and
Richard Epstein
Larry and Florence Adamson
Fran and Jim Allen
John Arbuckle, Jr.
Eva Bacal
Tony and Maria Beram
Diane and Donald Bristow
Suzanne and Don Brown
Dora and Barry Bursey
Debbie Goodman-Butler
and Patrick Butler
Geraldine Cass
Kathleen Church
Jan Copeland
Patricia Coyne-Johnson
and John A. Johnson
Andrea and Harry Crane
Barbara and John Cummings
Sean, Veronika, and
Vivien Daniels
William Dixon and Linda Molm
Mary Ann and Darryl Dobras
Chris and Carol Dubrowski
Anne and John Duffy
Martha Durkin
Katie Dusenberry
Margaret and Dennis Fesenmyer
Mr. and Mrs. John Francesconi
Drs. Margot W. and J.D. Garcia
Angela and Jeffrey Glosser
Michael Godnick
Suzanne "Zippy" Gross
Sara and Andrew Gyorke
Janet and Richard Hardy
Bonnie and Michael Harris
Suzanne and Lester Hayt
Sandra and Elliott Heiman
Peggy Hitchcock
Darlinn and Sidney Hollander
Susan and James Hunnewell
Caroline Jank
Bob and Susan Johnstone
Leianne Jones
Denise Ford Judson and
George Judson
Jamie and Bill Kelley
Janice and Alvin Kivel
Ronald and Ruth Kolker
Robyn Lambert

Jane Langenfeld and
Duncan Chang
Janice and Robert Leff
Christiane G. Leslie
Sharon Lewis and
Mayor Shanken
Marcia Lindley
Elaine Litvack
Anne and Ed Lyman
Kit and Joan Marrs
Michelle and Joseph Millstone
Jeanne Miyasaka and
Joseph Ryan
Essie Nadler
Pat and Wayne Needham
Jean and Jordan Nerenberg
Douglas Ng
Susan and Chuck Ott
Denise Pappas
Sally Quinby
Ann H. Redding
Chuck and Terri Roehrick
Drs. Adib and Vivi Sabbagh
Arlene and Morton Scult
Cathy Shell
Evelyn G. and Daniel J. Simon
Marc Skalla
Richard and Marie Stewart
Barbara Stokely
Jon Sutton
Geraldine and Jerome Tamm
Susan and Glyn Thickett
Karen Thornton
Catherine and Bruce Uhl
Richard Walker
Marion Weber
Judy and Richard Weill
Adam Weinstein and Kira Dixon
Wendy and Elliott Weiss
Maggie White
Lois Wienshienk

PATRON

\$500 - \$999

Anonymous (5)
Joseph Acker
Joanne and Howie Adams
Pauline Albert
Nancy and Daniel Alcombright
Susan and Larry Allen
Cheri Anderson
Jessica L. Andrews and
Timothy W. Toothman
Susan L. Ashley

Jeannette and Robert Barnes
Maralyn and Brian Bates
Robin and Kent Batty
John Bechman
Barbara and Mathis Becker
JoAnn and Dave Becker
Dr. Cash and Susanne Beechler
Anna Don
Carol Bishop
Linnea and William Boaz
Judy and Robert Bolt
Emily Bott
Martha Brightwell
Sharley and Graham Bryce
Diana and Jay Caldwell
Tyna Callahan and Dimitri
Voulgaropoulos
Brian and Lauren Cantoni
Jennifer and Michael Caplan
Shirley Chann
Daniel Chavez and Sharon Oliver
Al and Sharyn Chesser
Jonna and Tony Christensen
Lois and Tom Colberg
Arlan Colton
Connie and David Corbett
Marjorie and George
Cunningham
Tricia and Colin Don
Donal Drayne
Jan and Leo Dressel
Jacques Dumont
Gail E. Dunlap
Penelope Ewen
Maxine and Ted Eyde
Mary Jo Fitzgerald
Brigitta and Curtis Forslund
Todd H. Franks and
Nancy Bodinet
Patricia and Gary Fridley
Cheryl and Ira Gaines
Lauralyn and Edward Gesten
Cathleen and Thomas Godfrey
Muriel and Marc Goldfeder
Peggy and Steve Goulding
Susan Grana
Susan and Loring Green
Pamela Grissom
Jennifer Gross
Rita Hagel
Anne-Marie and Phil Hall
Drs. Michael Hamant
and Lynnell Garder
Lori Hamilton
Mary and Geoffrey Hamway
Lynn and Michael Harris

Suzanne Harris
Pam and Stan Hart
Sarajeon and Jeri Harwood
Michael and Phyllis Hawkins
Ruth Murphy and John Hay
Bill Hemelt and Anne Leary
James Herzfeld
Susan Hetherington
Tom and Sandy Hicks
Marcia and Gregory Hilliard
Leah Hoffman
Lucy and Barry Holt
J.P. Jones
Barbara and Graham Kretchman
Margaret Iverson
Deborah and Jeffrey Jacob
William and Kimberly Jacobsen
Jill and Stan Jankowski
Elizabeth and Joel Johnson
Ayo Jordan-Jones
Kay Juhan
Denice Just
Toni and Joseph Kane
Robert Kaul
Elizabeth Keith
Drs. George and Maria Knecht
Lynne Lagarde and Bob Stankus
Joan Le Fevre
Ellen and Philip Leavitt
Dr. Alan Levenson and
Rachael K. Goldwyn
Lori Levine and Gary Benna
Bertie Levkowitz and
Thomas Herz
Barbara and Martin Levy
Thom and Kathy Mansur
Lorene Martin
Ann and George Mavko
Dorothy and Roy Mayeske
Barbara McHenry
Elsa and Jack McTavish
Laura and Andrew Meyer
Leone Mohney
Shirley G. Muneay
Ellen and David Murphy
Janet and William Murray
Kay Musser
Karen Nackard
Sylvia Needham
Caren and Thomas Newman
Peggy Odendahl
Marcia and John Orcutt
Sally and Ben Perks
Clyde and Jane Perlee
Jeanne Pickering and
Mike Andrew



INDIVIDUAL DONORS

PATRON (continued)

\$500 - \$999

Leona and James Pomush
Agnes Laylah Poore
Sylvia Pozarnsky and Tom Riley
Mark Quale and Teresa Kim
Lisa and Steve Reynolds
Drs. Linda Riordan and
David Siegel
Todd Rosin and Todd Armstrong
Donna and Darrell Sabers
Robert Salomon
Michael and Enriqueta Salvo
Sally A. Sample
Kathi and Doug Sanders
Barbara Sattler and Ken Hegland
Patricia and Harry Schlosser
Marge Schneider and Ed Shirley
Robyn and Edward Schwager
Arleen and Fred Schwartz
Lisa and Brian Scott
Jeannette Segel
Barbara and George Seperich
Bill Sheppard and Range Shaw
Patricia Simpson
Joyce and Jim Smith
Vicki and Bob Smith
Richard Snodgrass and
Merrie Brucks
Bruce Spencer
Celia and Adam Staperfene
Dinah Stecki
Claire Steigerwald
Dan and Jill Stevenson
Jonieti Stone
Lori Surina
Lisa and Robert Swift
Gail and Hans Thiele
Hugh and Allyn Thompson
Marcia and Tyler Tingley
Marlene Tompkins
Stuart Turner
Susan and Evan Unger
Barbara and John Walker
John and Connie Ann
Nygard Wareing
Mary and Ronald Weinstein
Janice Wezelman and
David Bartlett
Ellen Wheeler and David Nix
Nancy and Peter White
Mary and John Wilber
Jana and Mark Wilcke
Andrew Winsberg
Suanne Woo

Addie Young
Edwin Zimmermann
Elizabeth Zukoski

FRIEND

\$250 - \$499

Anonymous (8)
Stephanie and Jack Aaron
Nancy Abbott
Audrey and Daniel Abrams
Barbara and Wayne Algire
Lidia and Joel Allen
Ovadan Amanova-Olsen
Miguel Arenas and
Katherine Belk-Arenas
Susan Johnson-Ash
and Gregory Ash
Carolee and Daniel Asia
Rae and Peter Aust
Jennifer and Enrique Aviles
Marianne Ayres
Pamela and Frank Bangs
Jane Becker
Jeffrey F. Berg and
Debra H. Paget
David and Bonnie Bickford
Paula and Edwin Biggers
Jean and James Blair
Rebecca Block and Tim Haskin
Barbara Bloom
Susan and John Bowers
Carolyn Brown
Bonnie and David Burnett
Kristin and James Carkeek
Elaine and Art Carlson
Patricia and Jon Carlson
Judith Chapman
Carol Chor and Steve Klaffer
Darrel Christenson
Mark Christenson
Pamela and Hans Churchill
Joyce A. and Richard S. Clark
David Cohen
Shelley and Kenneth Corriell
Sally and Robert Crawford
Shawne Cryderman
Paula and Michael Culbert
Lyndle Cummings
Victoria and John Curtin
Sandy Czachor
Janice and Roger Dahlgren
Kathy Daniels
Marla and Dennis Daugherty
Michelle Davidson

Barbara Davis
Pennie DeHoff and Larry Wurst
Raul Delgado
Rebecca Duxtater
Carole and David Drachler
Judith and Lawrence Effken
James Eichman
Rosalind and Seth Eisner
Lee and Spencer Elliot
Shera Farnham
Iris Feldman
Nancy and Richard Fintzy
Nancy and David Flatt
Patricia Fluhrer
Sarilyn and Sherman Fogel
Letitia Frye
Connie Furr
Lavon and Hugh Gallagher
Christine Galloway
Ami and John Giardina
Bruce Gillaspie
Miriam and Richard Glabman
David A. Gordon
Brad Graber
Donita Gross
Ann and Mike Guilfooy
Robert Haddock and Ann Stanton
Patti Haring
Paige and Melvin Hector
Ann McLaren Helstad
Pat and John Hemann
Jeanne Heyerick
Dolores and Doby Hillenbrand
Sharon and Jesse Hise
Lynn R. Hoffman
Mary Hojnacki
Marta and Robert C. Holl
Judy and Michael Holser
Gerri and Barry Holt
Zina and Michael Horrell
Lori and David Iaconis
Christel and Kenton Ide
Norma Inkster
Melva Irvin
Marsha and David Irwin
Lisa and Gary Israel
Deborah Jamieson and
Scott DeWald
Thomas Jensen
Marcelle and Leonard Joffe
Anna Johnson
Pam Johnson
Richard and Shirley Johnson
Beverly and Robert Jones
Andrea Karnofsky and
Charles Gannon

Lendre and King Kearns
Martha and George Kellner
Judith Kelly
Bruce Kilbride and Lynn Krabbe
Suzanne King
Carolyn Kinney
Barbara and Jay Kittle
Marsha and Donald Klein
Suzan-Oda and Bill Knese
Wendy and Karl Koch
Judith and John Kofron
Dr. and Mrs. Ravi Koopot
Michael Kramer
Tamar Rala Kreiswirth
and John DeLuca
Judy Krolkowski
Alan E. Kruse
Kathryn Lambert
Heli Lanz
Lucinda and Garvin Larson
Dawn and John Lashley
Joelle and Donald Lawson
Diane Lebel
Brian Lensink and Barbara Brent
Leo Litowich
Donald Mateyka
Felicia and Warren May
Theodore and Almeda Maynard
Claire and Earl Mendenhall
Janene Miller
Robert Miller
Mr. and Mrs. George Mink
Helene and Frederick Mittleman
Andrea Molberg and
Hank Greenleaf
Frances Moore
Phyllis Morgan
Betsy and Jim Morrow
Timothy Mulcahy
Dana and Rick Naimark
Susan and James Navran
John Neuberger
Alice and Edward Neuwrith
Julie and Douglas Newton
Susan and James Opeka
Michael and Patricia Ore
David Ormand
Jones Osborn
Anny and Lester Packer
Jean and John Payne
Alyce Pennington
Sheila Peress and John Velez
Frederick Peterson
Richard Plattner and
Susan Morris
Lauren and David Rabb

FRIEND (continued)

\$250 - \$499

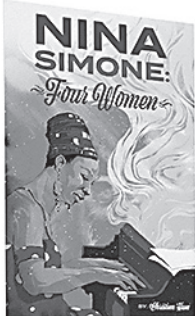
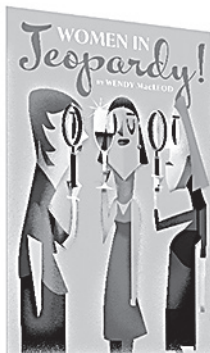
Gary and Susan Redeker
Patricia and Wallace Rickards
Kathleen Rife
John Ritchie
Carolyn Robbins
Alice Roe
Anne Roediger
Christina and James Ronstadt
Emily Rosenberg Pollock
Quinta and Philip Rosenberg
Shirley and Thom Rossa
Barbara and Kent Rossman
Sharon and Richard Rundle
Stephen and Ruth Russell
Sandra Rutherford
Sharon Sackin-Weisel
and Marc Weisel
Deborah and Marc Sandroff

Judy and Michael Schaffert
Wendy and Marlene Schiller
Jerusha Schmalzel
Luanne Schocket
Veronica and Richard Schultz
Jacqueline and Paul Schulz
Howard and Trudy Schwartz
John and Maria Schwarz
Ann and Perry Sells
Susan and Mark Sendrow
Julie Karcis and
James Seward
Susan and Sol Shatz
Robert Sheely
Gregory Sheets and
Gary Beavan
Betty Shelby
Marvin Siegel and
Eileen Bloom
Miles Silverman
Raj Sivananthan and
Kay Wolfkeil

Randall Smith
Sara and Larry Soller
Jennifer Spencer
Kay Spencer
Gail Spiegler
Linda Staubitz
David Steele
Richard Steiner
Alice and Joel Steinfeld
Diane and David Sterle
Darryl and Helen Stern
Robert and Pru Sternin
Howard C Stewart, Jr
Barbara Straub
Olga Strickland
Mary Beth Sutor
Carolyn Terkla
Sandra and Barry Thall
Mark and Lynn Thomas
Ingrid and Frank Tolone
Christopher Tong

Diane and Dale Tretschok
Rick Unklesbay and
Margaret Norem
Harvey Unti
Joan and Jerry Vandevoort
Ellen and David Vellanga
Marianne Vivirito and
Ross Iwamoto
Karen Warrick
Susan Watchman and
Terry Corbett
Rosemary Weil
Carol and Lester Welborn
Paul Wentworth
John Whiteford
Nancy and Ted Wolter
Marilyn and Peter Woods
Geri Wright and John Coxe
Flora Yee and Phil Derkum

OUR SEASON CONTINUES!



LEARN MORE ABOUT OUR ATC FLEX PASSES

ATC.ORG/SUBSCRIBE



APRIL 09 - APRIL 30



JUSTICE

A MUSICAL

Book by Lauren Gunderson Music by Bree Lowdermilk Lyrics by Kait Kerrigan

Directed by Melissa Crespo

A world premiere musical journey with two of the world's most iconic women at the height of their power.

It is 1993, and Ruth Bader Ginsburg has just joined the United States Supreme Court; the first and only other woman there, Sandra Day O'Connor, is ready to welcome her and get to work. In an intimate, epic three-person new musical built of sweeping songs, urgent conversations about equality, and truly human heroines, we come to know these two iconic justices at the height of their power. Through a third character, Regina, rising through the ranks of the law, we discover how O'Connor and Ginsburg inspire, challenge, and propel the next generation of changemakers and trailblazers in American jurisprudence. Ruth, Sandra and Regina confront each other about equal justice under the law, strategy, civil rights, husbands, kids, dreams, sorrows, and how to set a new course for our country and the world.



Arizona Actor
Chanel Bragg
(ATC's *Music Man* & *Cabaret*)



Lighting Design
William C. Kirkham
(Award-winning Lighting Designer and Professor of Lighting Design in the School of Film, Dance & Theatre at ASU)

INDIVIDUAL PRODUCTION SPONSOR
ROB & LAURIE GLASER

ATC.ORG / 833-ATC-SEAT

ATC AT THE TEMPLE OF MUSIC AND ART 330 S. SCOTT AVE. TUCSON



INDIVIDUAL DONORS

GIFTS IN HONOR OF

ATC Staff by Mary and Matthew Palenica

Char and Alan Augenstein by Janice and Tom Kennedy

Kathleen Bader by Ann Bader

Madeline Barr by Marilyn O'Connor

Sean Daniels by Anonymous, Desha Bymers, Sharon Carstens, and Brad Casey

Beth Dino, and Keith DeConcini by Norma and Stanley Feldman

Ryan DeLuca by Tamar Rala Kreiswirth and John DeLuca

Aune DeWitt by Schuyler DeWitt

Mary Ann and Darryl Dobras by Sara and Ben Norton

Christian Duhamel by Teresa and Gerald Duhamel

ASU Prof. Emeritus Bonnie Jean Eckard

by Michael J. Olsen

Pat Engles by Judith Brown and Barbara and Wayne Algire

Dr. Anthony Fauci by Patricia and Barry Boydston

Laurie and Rob Glaser by Debbie and Patrick Butler and Deborah and Jeffrey Jacob, Cushman & Wakefield | PICOR Commercial Real Estate Services

Tana Hicken by John Dow

The Connie Hillman Family Foundation by Anonymous

Ron Hunting by William Klever

Gary Jackson by Richard McCartney, Veronica Amendola-Penzonze and Paul Penzone, Elizabeth and Richard Pagel, Thomas Evans, Bobb Cooper, Carol Poore, Ph.D., Dennis and Kristin Ford, Alexis and Patrick Magness, William and Kimberly Jacobsen, David Roche, Letitia

Frye, Kimberly Riggs, Javier Soto, Larry Lytle, Ava Spanier, Martha Abbott, Robert Kerry, Catherine Anaya Saunders, Heather Wagenhals, Jill and Rod Krigsten Riley, Nicole and Greg Stanton, and Michael Fornelli

Michael Kasser by Carolee and Daniel Asia, David Cohen, and Marc Skalla

Marta McKenna by Bert Whitehead

Mike Murphy by Jan Waterman and Andrew Robinson

Tracey Kurtzman by Carol Galper, Melinda Morss, Lynne Cunningham, Richard Wahl, Margaret C Nelson, Alissa and Jed Sadalla, Dawn Mangum, Fanny Nisbet, Zuber Mulla, and Jamie Weinand

Sherri Lennarson by Nancy and Brian Jackson

Terry Lowe by Kevin Flanagan

Dr. Lorraine Mackstaller by Norma and Stanley Feldman

Richard Piro; Educator, Director, Colleague, Friend by Bruce Bernel

Emily Pollock by Karen Young

Brian Quijada by Rosemary Espinosa and Bonnie Shlensky

Laura Rosenberg by Carol and Chris Dubrowski

Kathleen Shappee-Wood by Leonard Wood

Paula Taylor by Todd Rosin and Todd Armstrong

Brannon Wiles by Betsy and Jim Morrow

Geri Wright by Your Part-Time Controller, LLC

Joel Zimmerman by Dru Pearson

GIFTS IN MEMORY OF

John Allen by Sarajejan and Jeri Harwood

Martin Becal by Eva Becal

Michael Belton by Anna Don

Allison Brevard by Maria Phipps

Rose Byrne by Kay Dodder

June Caldwell Martin by Diana and Jay Caldwell

Esther Capin by Elizabeth Keith

Pat David by Lisa Rafferty

John Degan by Jennifer Trice

Kathi Doudnik by Ginny Spencer

Carol DuVal Whiteman by Bill Sheppard and Range Shaw, Norma and Stanley G. Feldman, Jessica L. Andrews and Timothy W. Toothman, and Betsy Bolding

Slivv Edmonds by Bill Sheppard and Range Shaw

and Jessica L. Andrews and Timothy W. Toothman

Catherine Farren by Marie Farren

Eleanore Golden by Debra Golden-Davis

Kenneth Greenfield by Ruth Zales

James Gregg by Larry Brimmer

Alan Harris by Rebecca Richardson and DiaBne Lebel

Hal Holman by Mary Bielski

Francis Jank by Caroline Jank

Keith Johnson by Pamela Johnson

Barry Kalpin by Amie and Jeff Coleman

Ruth Kolker by Ronald Kolker

Warren Iyerla by Karen Wilkinsin-Maedge

Tony Marrs by Karry Marrs

Gerry Murphy by Shirley Estes, Bill Sheppard and Range Shaw, Jessica L. Andrews and Timothy W. Toothman, and Betsy Bolding

Wyonas Pennington Miller by Roberta Miller

Brian Peterson by Kerry LaMountain

Charles Rood by Mr. and Mrs. John Logie, Ralph A. Greene, Wendy and Marlene Schiller, Margaret Sharkey, and Jane and James Peterson

Art Rotstein by Rochelle Brickman

Eve Schocket by Luanne Schocket

Geri Silvi by Jennifer Spencer and Carol Gelinas

Brad Smith by John Ritchie

Larry Smith by Bill Sheppard and Range Shaw

Richard Stahl by Bill Sheppard and Range Shaw

Sharon K. Stewart by Howard C. Stewart, Jr.

Stephen Thompson by Susan Thompson, Barbara E Bauer, Gary Martin, Donald Mateyka, Rosemary Weil, and Southern Arizona Anesthesia

Donna Tingom by Anonymous

John Ulrich by Randall Smith

Bernie Weingarten by Karen and Clyde Farkas

Jessica Grace Wing by Jennifer Schneider

Kathryn Wolfe by Gary Wolfe

Georgia Yost by Sally McKenzie

Marcy Zachmeier by Karen Wilkinsin-Maedge



LEGACY SOCIETY

Honors those friends of ATC who have established a gift through a bequest, trust arrangement, or other estate plan provision.

Anonymous*
Anonymous
Cameron and Mary Artigue
JoAnn and David Becker
Helen and Robert Begam*
Nathaniel and Suzanne
Bloomfield
Dr. and Mrs. James F. Blute, III
Betsy Bolding
Thomas Chapman
Jacklyn Connoy and
William Maguire
Len* and Doris Coris
Sivly Edmonds*

Bob and Nancy Eschrich
Carol Fink
Joanie Flatt
Michael O. Flatt*
Ted and Barb Frohling
Harry and Lois Garrett
Dr. Mary Jo Ghory
Steven Cohen and
Michael Godnick
Chester and Ann Goldberg*
Mr. Terrance M. Hanson
Mr. and Mrs. Edward
J. Harrison
Andrew F. Holtz

Jacqueline Hufford-Jensen
and Gregory Kroening
I. Michael and Beth Kasser
Bill and Kathy Kinney
Maxine and Jonathan Marshall*
Les and Phyllis Minsuk
Joan A. Morris
Melvin E. Mounts
Peggy and Gerry* Murphy
Don* and Peg Nickerson
Martha and Terry Allen Perl
Ronald Robinette and
Sharon Roediger
Arnold and Carol Rudoff

William C. and Deborah
Chisholm Scott
F. William Sheppard
Daniel J. and Evelyn G. Simon
Richard Stahl*
Robert* and Shoshana Tancer
Roy Van Note
Virginia A. Weise*
Mark and Taryn Westergaard
Maggie White
Mr. and Mrs. Richard
H. Whitney

* deceased

ATC'S LEGACY SOCIETY

The future is made more certain
by those who invest in it.



Veronika Duerr and Nardeep Khurmi in ATC's *Silent Sky*. Photo: Tim Fuller.

ATC's Legacy Society was established to recognize individuals who have made a planned gift to ensure the Company's vision lives on well into the future.

Whether you contribute through a bequest in a will or trust, or a beneficiary designation on your retirement account, life insurance, or other estate-planning vehicle, your legacy gift ensures that ATC continues to bring world-class theatrical productions to our stages, reaching generations for years to come.

LEGACY SOCIETY BENEFITS:

- Recognition in the ATC program book for the entire season.
- Exclusive updates from our Artistic department throughout the season.
- Exclusive invitation to our annual Legacy Society Luncheon event.



To join the Legacy Society, or to learn more about ATC's planned giving program, please contact **Paula Taylor, Chief Development and Marketing Officer**, at ptaylor@atc.org or **602-888-7848**.

ARIZONA THEATRE COMPANY'S 2022 GALA - SEASON 54

Honoring the 2022 Georgy Award Recipient Char Augenstein
& the 2022 RainMaker Award Recipient Chef Janos Wilder

SEASON



SATURDAY, MARCH 12, 2022

TEMPLE OF MUSIC AND ART

DOWNTOWN TUCSON



ATC.ORG/GALA



STAFF

Sean Daniels
The Kasser Family Artistic Director

Geri Wright
Managing Director

ARTISTIC

**ASSOCIATE
ARTISTIC DIRECTOR**
Chanel Bragg

ARTISTIC ASSOCIATE
christopher oscar peña

ARTISTIC PRODUCER
Kristi Hess

LITERARY MANAGER
Michele Volansky

**DIRECTOR OF
DIGITAL ASSETS**
Aleks Hollis

PLAYWRIGHT-IN-RESIDENCE
Elaine Romero

LEARNING AND EDUCATION

**DIRECTOR OF LEARNING &
EDUCATION**
Christopher Moseley

**EDUCATION OUTREACH
COORDINATOR**
Emily Burritt

PRODUCTION

PRODUCTION MANAGER
Becky Merold

**ASSISTANT
PRODUCTION MANAGER**
Sheldon Lane

STAGE MANAGEMENT

**PRODUCTION
STAGE MANAGER**
Glenn Bruner

STAGE MANAGER
Dom Ruggiero

ASSISTANT STAGE MANAGERS
Mollie Heil
Olsen Torres

STAGE OPERATIONS

STAGE SUPERVISOR
Caroline Price

STAGE SUPERVISOR (PHX)
John Emery

SCENERY

TECHNICAL DIRECTOR
Nils Emerson

**ASSISTANT
TECHNICAL DIRECTOR**
Taylor Moss
Arthur Potts

CARPENTER
John Crain

PAINTS

CHARGE SCENIC ARTIST
Charlotte Alcorn

**ASSISTANT
CHARGE SCENIC ARTIST**
Samantha Nickel

PROPERTIES

PROPS SUPERVISOR
Sara Pugh

**ASSISTANT
PROPS SUPERVISOR**
Andrew Babb

COSTUMES & WARDROBE

COSTUME SHOP MANAGER
Mary Woll

COSTUME DESIGNER
Kish Finnegan

COSTUME SHOP ASSISTANT
Sandahl Tremel

DRAPER
Phyllis Davies

WARDROBE SUPERVISOR
Kelsey Waller

LIGHTING AND PROJECTIONS

**LIGHTING & PROJECTIONS
SUPERVISOR**
Tim Smith

LEAD ELECTRICIAN
Brittany Tennis

STAFF ELECTRICIAN
Shane Sumner

SOUND

SOUND SUPERVISOR
Mathew DeVore

**PRODUCTION
SOUND ENGINEER**
Jason Campbell



STAFF

ADMINISTRATION

EXECUTIVE ASSISTANT
Nick Cianciotto

COMPANY MANAGER
Courtney "Cat" Tries

DEVELOPMENT & MARKETING

CHIEF DEVELOPMENT AND MARKETING OFFICER
Paula Taylor

DIRECTOR OF ANNUAL FUND AND STEWARDSHIP
Carley Elizabeth Preston

GRANTS MANAGER
Gretchen Pace

DEVELOPMENT EVENTS MANAGER
Stacey Jay Cavaliere

SENIOR MARKETING MANAGER
Bitty Rosenberg

CREATIVE AND BRAND MANAGER
Richard Giuliani

MARKETING COORDINATOR
Berenice Zubiate

FINANCE

CHIEF FINANCIAL OFFICER
Mark Kochman

ACCOUNTING COORDINATOR
Bob Jennens

ACCOUNTING ASSOCIATE
Stephanie Cianciotto
Patricia Walter

BOX OFFICE & HOUSE MANAGEMENT

DIRECTOR OF PATRON SERVICES
Juliet Martin

MANAGER OF PATRON SERVICES
Richard Ragsdale

BOX OFFICE MANAGERS
Sara Kavitch
Linda Schwartz

ASSISTANT BOX OFFICE MANAGERS
Keith LaSpaluto
Carrie Luker

BOX OFFICE AGENT
Abbie Hackney
Sarah Smiley

HOUSE MANAGER
Bill Bethel

FACILITIES

FACILITIES MANAGER
Horace Ashley

MAINTENANCE SUPERVISOR
Dean Morgan

MAINTENANCE TECHNICIANS
Jesus Francies
Derrick Herrera

Arizona Theatre Company sends an extended thank you to all of those who have helped to make this production possible.

LAND ACKNOWLEDGEMENT STATEMENT

The Arizona Theatre Company recognizes the rich history of the twenty-two American Indian communities in Arizona.

It is important to understand the cultural history of the land and our place within that history.

We invite you to learn more by visiting local cultural sites like the **Heard Museum: heard.org/education/arizona-indian-communities** or the **Amerind Museum: amerind.org** among others.



EDUCATION



WE INSPIRE CREATIVITY ACROSS THE STATE

ATC delivers inspiring experiences in a number of ways, both connected to our stage and beyond our walls, in schools, and across the state.

OUR PROGRAMS INCLUDE:

ATCteen

ATC Teen is a project-based learning branch of the ATC Academy designed for students ages 13-18. The goal of this program is to create The Young Artists Series of plays throughout the year. The series consists of three student led shows per season: two published plays and one student written play. Led by a student council and mentored by the staff of the Education Department, students learn how to produce, direct, design and act in a series of plays curated by the students themselves. In addition to producing the Young Artist Series of plays, students involved in the program also take on special outreach projects and events associated with ATC's educational programs. There is a \$50 per year participation fee for the program.

STUDENT MATINÉE SERIES

Student Matinéés allow ATC to share the live theatre experience at low or no cost to young people. (For elementary, middle school, high school, and college groups).

SUMMER ON STAGE

Summer On Stage is a six-week performance and technical theatre experience. Students of the program will feel the joys of learning and creating theatre in a professional theatre setting. Students will experience Master Workshops taught by leading artists in the industry and perform in one of two shows on the beautiful Temple of Music and Art mainstage.

DAVID IRA GOLDSTEIN ARTIST-IN-RESIDENCE PROGRAM

Residency programs are 10 week intensive in-school workshops available to middle and high school drama departments. Students and teachers learn from professional teaching artists in a content area of their choice. These specialized and unique experiences allow students to deepen their learning and sharpen their skills in theatre arts. Residency topics include acting techniques, improv, stage combat, Shakespeare, devised theatre, and more.

YOUR SUPPORT MAKES THESE VITAL PROGRAMS POSSIBLE

VISIT ATC.ORG/ATCEDUCATION

EMAIL EDUCATION@ATC.ORG

OR CALL 520-463-7675